

# oxygen monitoring catalogue



**UK**  
**2026**



**VIAMED**

# The Leading Medical Oxygen Monitoring Supplier

## Contact Us



01535 634 542



01535 635 582



15 Station Road  
Cross Hills  
Keighley  
West Yorkshire, BD20 7DT  
United Kingdom



info@viamed.co.uk



www.viamed.co.uk



**VIAMED**

## Oxygen Sensors



OEM and compatible oxygen sensors for use with most oxygen analysers, oxygen monitors, anaesthesia systems, ventilators, incubators, oxygen concentrators... see page 4



RoHS compliant lead-free sensors

see page 20

## Gas Sensors



Carbon Monoxide, Nitric Oxide and Nitrogen Dioxide Gas Sensors from City Technology

see page 26

## Oxygen Monitors/Analysers



A range of oxygen monitors and analysers for use in a variety of applications...

see page 28

## Oxygen Monitoring Accessories



Accessories for use with oxygen sensors, patient circuits and oxygen analysers/monitors...

see page 34



# Oxygen Sensors

## EXPERIENCE

Viamed has been providing Oxygen Sensors since 1977. Speak to us regarding any of your oxygen sensor requirements.

## WIDEST RANGE

Viamed have the widest range available on the market - we supply OEM and compatible oxygen sensors.

## LATEST TECHNOLOGY

Sensors utilize the latest technology - providing high performance, reliability and accuracy.

RoHS Compliant Lead-free sensors now available see page 20.

**FREE UK DELIVERY\* & QUANTITY DISCOUNTS**

on all oxygen sensors

**No minimum order value &  
no order processing charge**

**NHS Credit Facility available**

**Viamed's online short-form cross reference can  
be used to check compatibility, as well as for  
details of additional oxygen sensors:**

[www.viamed.co.uk/xref](http://www.viamed.co.uk/xref)

Alternatively, or if your oxygen sensor or equipment is not listed,  
please contact us and we will check our comprehensive database.



**Free oxygen sensor  
disposal service**  
for the safe disposal of  
any of your depleted  
oxygen sensors

0110051  
T-1



**Main OEM:** Teledyne  
**OEM Sensor Part No.:** A37016  
**Output Connector:** Slip rings, 2  
**Sensor Output:** 200 ± 40 µA  
**Sensor Life:** 18 months  
**Response Time:** ≤ 30 seconds  
**Warranty:** 12 months

0110017  
R-17MED



**Main OEM:** Teledyne  
**OEM Sensor Part No.:** C43690  
**Output Connector:** Phone jack, 0.141"  
**Sensor Output:** 7.0 - 13.0 mV  
**Sensor Life:** 36 months  
**Response Time:** ≤ 6 seconds  
**Warranty:** 15 months

0110018  
R-17V



**Main OEM:** Honeywell (Envitec)  
**OEM Sensor Part No.:** OOM103-1  
**Output Connector:** Phone jack, 3.5 mm  
**Sensor Output:** 9.0 - 13.0 mV  
**Sensor Life:** ≥ 500,000 % oxygen hours  
**Response Time:** ≤ 5 seconds  
**Warranty:** 15 months



**For our range of  
 Oxygen Monitors and  
 Analysers go to page 28**

0110019  
R-17Vi



**Main OEM:** Viamed  
**Application:** Incubators  
**Output Connector:** Phone jack, 3.5 mm  
**Sensor Output:** 9.0 - 14.0 mV  
**Sensor Life:** ≥ 1,000,000 % oxygen hours  
**Response Time:** ≤ 12 seconds  
**Warranty:** 12 months

0110022  
R-22MED



**Main OEM:** Teledyne  
**OEM Sensor Part No.:** C-44611  
**Output Connector:** Molex, 3 pin plug  
**Sensor Output:** 7.0 - 13.0 mV  
**Sensor Life:** 36 months  
**Response Time:** ≤ 6 seconds  
**Warranty:** 15 months

0110021  
R-22MEDV



**Main OEM:** Dräger  
**OEM Sensor Part No.:** 83 620 30  
**Output Connector:** Molex, 3 pin plug  
**Sensor Output:** 9.0 - 13.0 mV  
**Sensor Life:**  $\geq 500,000$  % oxygen hours  
**Response Time:**  $\leq 5$  seconds  
**Warranty:** 12 months

0110039  
R-22VA



**Main OEM:** Atom Medical  
**OEM Sensor Part No.:** C81828-R22MATOM  
**Output Connector:** Molex, 3 pin plug  
**Sensor Output:** 9.0 - 13.0 mV  
**Sensor Life:**  $\geq 1,000,000$  % oxygen hours  
**Response Time:**  $\leq 12$  seconds  
**Warranty:** 12 months



0110073  
R-22VA  
(Matched Pair)



**Main OEM:** Atom Medical  
**OEM Sensor Part No.:** 60859  
**Output Connector:** Molex, 3 pin plug  
**Sensor Output:** 9.0 - 13.0 mV  
**Sensor Life:**  $\geq 1,000,000$  % oxygen hours  
**Response Time:**  $\leq 12$  seconds  
**Warranty:** 12 months

0110020  
R-22Vi



**Main OEM:** Viamed  
**Application:** Incubators  
**Output Connector:** Molex, 3 pin plug  
**Sensor Output:** 9.0 - 14.0 mV  
**Sensor Life:**  $\geq 1,000,000$  % oxygen hours  
**Response Time:**  $\leq 12$  seconds  
**Warranty:** 12 months



0110072  
R-22Vi  
(Matched Pair)



**Main OEM:** Viamed  
**Application:** Incubators  
**Output Connector:** Molex, 3 pin plug  
**Sensor Output:** 9.0 - 14.0 mV  
**Sensor Life:**  $\geq 1,000,000$  % oxygen hours  
**Response Time:**  $\leq 12$  seconds  
**Warranty:** 12 months

0110023  
R-23V



**Main OEM:** Dräger  
**OEM Sensor Part No.:** 6850645  
**Output Connector:** Slip rings, 3  
**Sensor Output:** 24 - 32  $\mu$ A  
**Sensor Life:**  $\geq 500,000$  % oxygen hours  
**Response Time:**  $\leq 12$  seconds  
**Warranty:** 15 months



**0110026**  
R-26MED



**Main OEM:** Respirationics  
**OEM Sensor Part No.:** 8-100412-00  
**Output Connector:** Phone jack, 0.141"  
**Sensor Output:** 7.0 - 13.0 mV  
**Sensor Life:** 24 months  
**Response Time:** ≤ 10 seconds  
**Warranty:** 12 months



**0110040**  
R-30V



**Main OEM:** GE Healthcare  
**OEM Sensor Part No.:** 6050-0004-110  
**Output Connector:** Phone socket, 6P4C  
**Sensor Output:** 10.0 - 12.0 mV  
**Sensor Life:** ≥ 1,000,000 % oxygen hours  
**Response Time:** ≤ 12 seconds  
**Warranty:** 15 months



**0110041**  
R-41V



**Main OEM:** Airshields  
**OEM Sensor Part No.:** 6735142  
**Output Connector:** Phone socket, 3.5 mm  
**Sensor Output:** 13.0 - 16.0 mV  
**Sensor Life:** ≥ 1,000,000 % oxygen hours  
**Response Time:** ≤ 12 seconds  
**Warranty:** 15 months



**0110042**  
R-42V



**Main OEM:** Stephan  
**OEM Sensor Part No.:** 130060001  
**Output Connector:** AMP plug, 2 pin  
**Sensor Output:** 9.0 - 11.5 mV  
**Sensor Life:** ≥ 1,000,000 % oxygen hours  
**Response Time:** ≤ 12 seconds  
**Warranty:** 15 months



**0110043**  
R-43V  
Pack of 2



**Main OEM:** Datex-Ohmeda  
**OEM Sensor Part No.:** 6600-1278-600  
**Output Connector:** Slip rings, 2  
**Sensor Output:** 28.0 - 50.0 mV  
**Sensor Life:** ≥ 500,000 % oxygen hours  
**Response Time:** ≤ 12 seconds  
**Warranty:** 6 months



**0110044**  
R-44V



**Main OEM:** MSA  
**OEM Sensor Part No.:** 806572  
**Output Connector:** Molex socket, 3 way  
**Sensor Output:** 9.0 - 13.0 mV  
**Sensor Life:** ≥ 1,000,000 % oxygen hours  
**Response Time:** ≤ 12 seconds  
**Warranty:** 15 months



0110045  
R-45V

 VIAMED

**Main OEM:** Datascope  
**OEM Sensor Part No.:** 0600-00-0002  
**Output Connector:** Molex, 3 pin plug  
**Sensor Output:** 9.0 - 13.0 mV  
**Sensor Life:**  $\geq 1,000,000$  % oxygen hours  
**Response Time:**  $\leq 12$  seconds  
**Warranty:** 15 months



0110047  
R-47V

 VIAMED

**Main OEM:** Acutronic  
**OEM Sensor Part No.:** OOM204  
**Output Connector:** Molex, 3 pin plug  
**Sensor Output:** 9.0 - 13.5 mV (2 channels)  
**Sensor Life:**  $\geq 500,000$  % oxygen hours  
**Response Time:**  $\leq 12$  seconds  
**Warranty:** 15 months



0110049  
R-49V

 VIAMED

**Main OEM:** Siemens  
**OEM Sensor Part No.:** 64 19 332 E380E  
**Output Connector:** Molex, 3 pin plug  
**Sensor Output:** 13.0 - 16.0 mV  
**Sensor Life:**  $\geq 1,000,000$  % oxygen hours  
**Response Time:**  $\leq 12$  seconds  
**Warranty:** 15 months



0110057  
T-7

 **TELEDYNE**  
ANALYTICAL  
INSTRUMENTS

**Main OEM:** Teledyne  
**OEM Sensor Part No.:** A51327  
**Output Connector:** Phone socket, 4 way  
**Sensor Output:**  $0.4 \pm 0.1$   $\mu$ A  
**Sensor Life:** 36 months  
**Response Time:**  $\leq 6$  seconds  
**Warranty:** 12 months



0110081  
UFO 130-2

 **TELEDYNE**  
ANALYTICAL  
INSTRUMENTS



**Main OEM:** Spacelabs  
**OEM Sensor Part No.:** 010-1120-01  
**Output Connector:** DIL, 10 pin  
**Sensor Output:**  $3.4 \pm 0.4$  V @ 100% oxygen  
**Sensor Life:** 24 months  
**Response Time:**  $\leq 130$  milliseconds  
**Warranty:** 12 months



0110401  
MAX-1

 **maxtec**  
A SALAZAR COMPANY

**Main OEM:** Analytical Industries  
**OEM Sensor Part No.:** PSR-11-915  
**Output Connector:** Slip rings, 3  
**Sensor Output:**  $17.0 \pm 3.0$  mV  
**Sensor Life:**  $\geq 500,000$  % oxygen hours  
**Response Time:**  $\leq 13$  seconds  
**Warranty:** 12 months



0110402  
MAX-2



**Longer life  
alternative to R-23V**

**Main OEM:** Dräger  
**OEM Sensor Part No.:** 6850645  
**Output Connector:** Slip rings, 3  
**Sensor Output:** 12.2 - 18.1 mV  
**Sensor Life:** ≥ 2,000,000 % oxygen hours  
**Response Time:** ≤ 15 seconds  
**Warranty:** 24 months



0110403  
MAX-3



**Main OEM:** City Technology  
**OEM Sensor Part No.:** MOX-3  
**Output Connector:** Phone socket, 4 way  
**Sensor Output:** 9.0 - 13.0 mV  
**Sensor Life:** ≥ 500,000 % oxygen hours  
**Response Time:** ≤ 15 seconds  
**Warranty:** 12 months



0110460  
MAX-7



**Main OEM:** Maxtec  
**OEM Sensor Part No.:** R109P09  
**Output Connector:** Phone jack, 3.5 mm  
**Sensor Output:** 8.0 - 12.0 mV  
**Sensor Life:** ≥ 1,000,000 % oxygen hours  
**Response Time:** ≤ 12 seconds  
**Warranty:** 12 months



0110461  
MAX-7L



**Main OEM:** Maxtec  
**OEM Sensor Part No.:** R109P13  
**Output Connector:** Phone jack, 3.5 mm  
**Sensor Output:** 3.5 - 7.5 mV  
**Sensor Life:** ≥ 1,000,000 % oxygen hours  
**Response Time:** ≤ 12 seconds  
**Warranty:** 12 months



0110409  
MAX-9



**Main OEM:** Teledyne  
**OEM Sensor Part No.:** B39636-R13  
**Output Connector:** 1 mm pin, x 4  
**Sensor Output:** 26.4 - 44.0 mV  
**Sensor Life:** 6 months  
**Response Time:** ≤ 20 seconds  
**Warranty:** 14 months



0110410  
MAX-10



**Main OEM:** GE Healthcare  
**OEM Sensor Part No.:** 6050-0004-110  
**Output Connector:** Phone jack, 0.141"  
**Sensor Output:** 8.0 - 13.5 mV  
**Sensor Life:** > 900,000 % oxygen hours  
**Response Time:** < 15 seconds  
**Warranty:** 12 months

0110411  
MAX-11



**Main OEM:** Dräger  
**Application:** Fabius, Evita, Babylog, Cato  
**Output Connector:** Slip rings, 3  
**Sensor Output:** 14.0 - 20.0 mV  
**Sensor Life:** ≥ 500,000 % oxygen hours  
**Response Time:** ≤ 12 seconds  
**Warranty:** 12 months

0110441  
MAX-11i



**Main OEM:** Dräger  
**Application:** Dräger Incubators  
**Output Connector:** Slip rings, 3  
**Sensor Output:** 14.0 - 20.0 mV  
**Sensor Life:** ≥ 750,000 % oxygen hours  
**Response Time:** ≤ 12 seconds  
**Warranty:** 12 months



**Compatible lead-free sensors are now available. See page 20 for more information.**

0110412  
MAX-12



**Main OEM:** Siemens  
**OEM Sensor Part No.:** 9004979-E347E  
**Output Connector:** Molex, 3 pin plug  
**Sensor Output:** 12.5 - 16.5 mV  
**Sensor Life:** ≥ 1,000,000 % oxygen hours  
**Response Time:** ≤ 12 seconds  
**Warranty:** 12 months

0110462  
MAX-12A



**Main OEM:** Philips (Respironics)  
**Application:** NeoPAP  
**Output Connector:** Molex, 3 pin plug  
**Sensor Output:** 8.0 - 13.0 mV  
**Sensor Life:** ≥ 500,000 % oxygen hours  
**Response Time:** ≤ 15 seconds  
**Warranty:** 14 months

0110424  
MAX-12C



**Main OEM:** Viasys  
**Application:** Avea Ventilator  
**Output Connector:** Molex, 3 pin plug  
**Sensor Output:** 8.0 - 13.0 mV  
**Sensor Life:** ≥ 1,000,000 % oxygen hours  
**Response Time:** ≤ 12 seconds  
**Warranty:** 14 months



0110413  
MAX-13



**Main OEM:** Philips (Respironics)  
**Application:** Criterion Vent  
**Output Connector:** Phone jack, 3.5 mm  
**Sensor Output:** 13.0 - 16.5 mV  
**Sensor Life:** ≥ 1,000,000 % oxygen hours  
**Response Time:** ≤ 12 seconds  
**Warranty:** 14 months



0110463  
MAX-13C



**Main OEM:** BioMed Devices  
**OEM Sensor Part No.:** 4433  
**Output Connector:** Phone jack, 2.5 mm  
**Sensor Output:** 13.0 - 17.0 mV  
**Sensor Life:** ≥ 1,000,000 % oxygen hours  
**Response Time:** ≤ 13 seconds  
**Warranty:** 14 months



0110469  
MAX-13CS



**Main OEM:** BioMed Devices  
**OEM Sensor Part No.:**  
 Crossvent 2+, 2i+, 3+, 4+  
**Output Connector:** Phone jack, 2.5mm  
**Sensor Output:** 10.5 - 15.0 mV  
**Sensor Life:** 3 years  
**Response Time:** ≤ 15 seconds  
**Warranty:** 12 months

Awaiting  
Image

0110474  
MAX-13J



**Main OEM:** Maxtec  
**OEM Sensor Part No.:** R115P03-002  
**Output Connector:** ?  
**Sensor Output:** ?  
**Sensor Life:** ≥ ?? % oxygen hours  
**Response Time:** ≤ ?? seconds  
**Warranty:** ?? months



0110444  
MAX-13-250



**Main OEM:** Maxtec  
**OEM Sensor Part No.:** R125P07  
**Output Connector:** Phone jack, 3.5 mm  
**Sensor Output:** 12.0 - 17.0 mV  
**Sensor Life:** ≥ 1,500,000 % oxygen hours  
**Response Time:** ≤ 15 seconds  
**Warranty:** 24 months



0110414  
MAX-14



**Main OEM:** MSA  
**OEM Sensor Part No.:** 806572  
**Output Connector:** Molex, 3 pin plug  
**Sensor Output:** 9.0 - 13.0 mV  
**Sensor Life:** ≥ 1,000,000 % oxygen hours  
**Response Time:** ≤ 13 seconds  
**Warranty:** 14 months



0110420  
MAX-14 (Fluke)



**Main OEM:** Fluke  
**OEM Sensor Part No.:** R116P82-001  
**Output Connector:** Molex SL, 2 pin  
**Sensor Output:** 9.0 - 13.0 mV  
**Sensor Life:**  $\geq 1,000,000$  % oxygen hours  
**Response Time:**  $\leq 12$  seconds  
**Warranty:** 12 months

0110475  
MAX-15M



Awaiting  
Image

**Main OEM:** Maxtec  
**OEM Sensor Part No.:** R115P63  
**Output Connector:**  
 ?  
**Sensor Output:** ?  
**Response Time:**  $< ?$  seconds  
**Warranty:** ? months



0110416  
MAX-16



**Main OEM:** Nellcor Puritan Bennett  
**OEM Sensor Part No.:** 4-072214-00  
**Output Connector:** Molex, 3 pin plug  
**Sensor Output:** 8.5 - 15.0 mV  
**Sensor Life:**  $\geq 1,500,000$  % oxygen hours  
**Response Time:**  $\leq 15$  seconds  
**Warranty:** 16 months



0110421  
MAX-16HT



**Main OEM:** Versamed  
**Application:** Vent  
**Output Connector:** Molex, 3 pin plug  
**Sensor Output:** 9.5 - 16.0 mV  
**Sensor Life:**  $\geq 1,500,000$  % oxygen hours  
**Response Time:**  $\leq 12$  seconds  
**Warranty:** 18 months



0110417  
MAX-17



**Main OEM:** Teledyne  
**OEM Sensor Part No.:** T-7  
**Output Connector:** Phone socket, 4 way  
**Sensor Output:** 7.5 - 12.5 mV  
**Sensor Life:**  $\geq 500,000$  % oxygen hours  
**Response Time:**  $\leq 8$  seconds  
**Warranty:** 12 months



0110418  
MAX-18



**Main OEM:** Teledyne  
**OEM Sensor Part No.:** C-1R  
**Output Connector:** Slip rings, 2  
**Sensor Output:**  $200 \pm 40$   $\mu$ A  
**Sensor Life:**  $\geq 250,000$  % oxygen hours  
**Response Time:**  $\leq 13$  seconds  
**Warranty:** 12 months

0110419  
MAX-19



**Main OEM:** Teledyne  
**OEM Sensor Part No.:** T-1  
**Output Connector:** Slip rings, 2  
**Sensor Output:** 170 - 230  $\mu$ A  
**Sensor Life:**  $\geq$  250,000 % oxygen hours  
**Response Time:**  $\leq$  20 seconds  
**Warranty:** 12 months

0110464  
MAX-23



**Main OEM:** Teledyne  
**OEM Sensor Part No.:** R-22MED  
**Output Connector:** Molex, 3 pin plug  
**Sensor Output:** 8.0 - 13.0 mV  
**Sensor Life:**  $\geq$  500,000 % oxygen hours  
**Response Time:** 1.5 - 3.5 seconds  
**Warranty:** 12 months

0110449  
MAX-43  
Pack of 2



**Main OEM:** GE (Ohmeda)  
**Application:** Giraffe  
**Output Connector:** Slip rings, 2  
**Sensor Output:** 25.0 - 35.0 mV  
**Sensor Life:**  $\geq$  500,000 % oxygen hours  
**Response Time:**  $\leq$  17 seconds  
**Warranty:** 12 months



**Free oxygen sensor disposal service**  
 for the safe disposal of  
 any of your depleted  
 oxygen sensors

0110439  
MAX-48



**Main OEM:** Analytical Industries  
**OEM Sensor Part No.:** All-11-60  
**Output Connector:** Phone socket, 4 way  
**Sensor Output:** 3.8 - 4.8 mV  
**Sensor Life:**  $\geq$  500,000 % oxygen hours  
**Response Time:**  $\leq$  12 seconds  
**Warranty:** 12 months

0110470  
MAX-108A



**OEM Sensor Part No.:** R109P21  
**Output Connector:** Phone socket, 4 way  
**Sensor Output:** 8.0 - 15.0 mV  
**Response Time:**  $<$  10 seconds  
**Warranty:** 12 months



0110468  
MAX-125M



**Main OEM:** Covidien  
**OEM Sensor Part No.:** 4-072214-00  
**Output Connector:** Molex, 3 pin plug  
**Sensor Output:** 10.0 - 15.5 mV  
**Sensor Life:** ≥ 500,000 % oxygen hours  
**Response Time:** ≤ 15 seconds  
**Warranty:** 12 months

0110476  
MAX-125W



Awaiting Image

**Main OEM:** Maxtec  
**OEM Sensor Part No.:** R140-P07-003  
**Output Connector:** ?  
**Sensor Output:** ?  
**Response Time:** < ? seconds  
**Warranty:** ? months



0110473  
MAX-125WF



**Main OEM:** Fluke  
**OEM Sensor Part No.:** R116P82-001  
**Output Connector:** Molex SL, 2 pin  
**Sensor Output:** 10.5 - 15.0 mV  
**Sensor Life:** ≥ 500,000 % oxygen hours  
**Response Time:** ≤ 15 seconds  
**Warranty:** 12 months



0110428  
MAX-250



without 'O' Ring

**Main OEM:** Maxtec  
**OEM Sensor Part No.:** R125P01-002  
**Output Connector:** 2 pin socket  
**Sensor Output:** 10.0 - 15.5 mV  
**Sensor Life:** ≥ 1,500,000 % oxygen hours  
**Response Time:** ≤ 15 seconds  
**Warranty:** 24 months



0110425  
MAX-250



with 'O' Ring

**Main OEM:** Maxtec  
**OEM Sensor Part No.:** R125P01-007  
**Output Connector:** 2 pin socket  
**Sensor Output:** 10.0 - 15.5 mV  
**Sensor Life:** ≥ 1,500,000 % oxygen hours  
**Response Time:** ≤ 15 seconds  
**Warranty:** 24 months

0110427  
MAX-250+



**Main OEM:** Maxtec  
**OEM Sensor Part No.:** R125P02-011  
**Output Connector:** Molex SL, 2 pin  
**Sensor Output:** 10.0 - 15.5 mV  
**Sensor Life:** ≥ 1,500,000 % oxygen hours  
**Response Time:** ≤ 15 seconds  
**Warranty:** 24 months



0110431  
MAX-250A



**Main OEM:** Blease  
**OEM Sensor Part No.:** 70300001  
**Output Connector:** Phone socket, 4 way  
**Sensor Output:** 11.0 ± 2.5 mV  
**Sensor Life:** ≥ 1,500,000 % oxygen hours  
**Response Time:** ≤ 15 seconds  
**Warranty:** 24 months



0110432  
MAX-250(B)



**Main OEM:** Maxtec  
**OEM Sensor Part No.:** R125P02-003  
**Output Connector:** Unterminated  
**Sensor Output:** 10.0 - 15.5 mV  
**Sensor Life:** ≥ 1,500,000 % oxygen hours  
**Response Time:** ≤ 15 seconds  
**Warranty:** 24 months



0110429  
MAX-250E



**Main OEM:** Maxtec  
**OEM Sensor Part No.:** R125P03-002  
**Output Connector:** Mini power socket  
**Sensor Output:** 10.0 - 15.5 mV  
**Sensor Life:** ≥ 1,500,000 % oxygen hours  
**Response Time:** ≤ 15 seconds  
**Warranty:** 24 months



0110430  
MAX-250ESF



**Main OEM:** Maxtec  
**OEM Sensor Part No.:** R115P85  
**Output Connector:** Mini power socket  
**Sensor Output:** 12.0 ± 2.0 mV  
**Sensor Life:** ≥ 500,000 % oxygen hours  
**Response Time:** ≤ 5 seconds  
**Warranty:** 12 months



0110433  
MAX-250K  
with DC



**Main OEM:** Viasys  
**OEM Sensor Part No.:** 16101  
**Output Connector:** Mini power plug  
**Sensor Output:** 10.0 - 15.5 mV  
**Sensor Life:** ≥ 1,500,000 % oxygen hours  
**Response Time:** ≤ 15 seconds  
**Warranty:** 24 months

Awaiting  
Image

0110478  
MAX-250MKT



**Main OEM:** Maxtec  
**OEM Sensor Part No.:** R140P11  
**Output Connector:** ?  
**Sensor Output:** ?  
**Response Time:** < ? seconds  
**Warranty:** ? months

0110453  
MAX-250MS

Awaiting  
Image



**Main OEM:** Maxtec  
**OEM Sensor Part No.:** R125P97  
**Output Connector:**  
Molex, 3 pin plug (female)  
**Sensor Output:** 10.5 - 15.5 mV  
**Response Time:** < 15 seconds  
**Warranty:** 24 months



0110479  
MAX-250MST

Awaiting  
Image



**Main OEM:** Maxtec  
**OEM Sensor Part No.:** R140P12  
**Output Connector:**  
?  
**Sensor Output:** ?  
**Response Time:** < ? seconds  
**Warranty:** ? months



0110471  
MAX-250TEL



**Main OEM:** Maxtec  
**OEM Sensor Part No.:** R125P18-012  
**Output Connector:** Mini phone socket  
**Sensor Output:** 10.0 - 15.5 mV  
**Sensor Life:**  $\geq 1,500,000$  % oxygen hours  
**Response Time:**  $\leq 15$  seconds  
**Warranty:** 24 months



0110435  
MAX-250TM



**Main OEM:** Maxtec  
**OEM Sensor Part No.:** R125P18-012  
**Output Connector:**  
Molex, 3 pin plug, 3P2C  
**Sensor Output:**  $11.0 \pm 2.5$  mV  
**Sensor Life:**  $\geq 1,500,000$  % oxygen hours  
**Response Time:**  $\leq 15$  seconds  
**Warranty:** 24 months



0110472  
MAX-250XPCB

Awaiting  
Image



**Main OEM:** Maxtec  
**OEM Sensor Part No.:** R125P10  
**Sensor Output:** 10.5 - 15.5 mV  
**Sensor Life:**  $\geq 1,500,000$  % oxygen hours  
**Response Time:**  $\leq 15$  seconds  
**Warranty:** 24 months

0110452  
MAX-550E



**Main OEM:** Maxtec  
**OEM Sensor Part No.:** R140P02  
**Application:** MaxO2 ME Monitor  
**Output Connector:** Stereo phone jack, 3.5 mm  
**Sensor Output:** 10.5 - 15.0 mV  
**Sensor Life:**  $\geq 1,500,000$  % oxygen hours  
**Response Time:**  $\leq 15$  seconds  
**Warranty:** 24 months



0110454  
MAX-550E



**Flow Diverter also available separately**  
Part Number: 0120086

**Main OEM:** Maxtec  
**Application:** MaxBlend Devices  
**Output Connector:** Stereo phone jack, 3.5 mm  
**Sensor Output:** 10.5 - 15.0 mV  
**Sensor Life:** ≥ 1,500,000 % oxygen hours  
**Response Time:** ≤ 15 seconds  
**Warranty:** 24 months



0110570  
OOM101

**Honeywell**

**Output Connector:** Slip rings, 2  
**Sensor Output:** 14.0 - 20.0 mV  
**Sensor Life:** ≥ 500,000 % oxygen hours  
**Response Time:** < 12 seconds  
**Warranty:** 15 months



0110565  
OOM109

**Honeywell**

**Main OEM:** Cortex  
**Output Connector:** Molex, 3 pin plug  
**Sensor Output:** 9.0 - 13.0 mV  
**Sensor Life:** ≥ 200,000 % oxygen hours  
**Response Time:** ≤ 360 milliseconds  
**Warranty:** 9 months



0110566  
OOM109-LF2

**Honeywell**

**Output Connector:** Molex, 3 pin plug  
**Sensor Output:** 9.0 - 13.0 mV  
**Sensor Life:** ≥ 200,000 % oxygen hours  
**Response Time:** ≤ 360 milliseconds  
**Warranty:** 9 months



0110560  
OOM111

**Honeywell**

**Main OEM:** Honeywell (Envitec)  
**OEM Sensor Part No.:** 01-00-0114  
**Output Connector:** Stereo phone jack, 3.5 mm  
**Sensor Output:** 11.0 - 13.0 mV  
**Sensor Life:** ≥ 1,000,000 % oxygen hours  
**Response Time:** ≤ 12 seconds  
**Warranty:** 15 months



0110590  
OOM111-M

**Honeywell**

**Main OEM:** Maquet  
**OEM Sensor Part No.:** 66 40 044  
**Output Connector:** Molex, 6 pin  
**Sensor Output:** 10.0 - 20.0 mV  
**Sensor Life:** ≥ 1,000,000 % oxygen hours  
**Response Time:** < 15 seconds  
**Warranty:** 15 months

Specifications applicable at standard conditions unless specified, contact us for further details



0110579  
OOM113

**Honeywell**

**Main OEM:** City Technology  
**OEM Sensor Part No.:** MOX-3  
**Output Connector:** Phone socket, 4 way  
**Sensor Output:** 9.0 - 13.0 mV  
**Sensor Life:**  $\geq 1,000,000$  % oxygen hours  
**Response Time:**  $\leq 12$  seconds  
**Warranty:** 15 months



0110660  
OOI103

**Honeywell**

**Main OEM:** Honeywell (Envitec)  
**OEM Sensor Part No.:** 01-00-0095  
**Output Connector:** Slip rings, 4  
**Sensor Output:** 9.0 - 15.0 mV  
**Sensor Life:**  $\geq 500,000$  % oxygen hours  
**Response Time:**  $\leq 13$  seconds  
**Warranty:** 15 months

Viamed's online short-form cross reference can be used to check compatibility, as well as for details of additional oxygen sensors:

[www.viamed.co.uk/xref](http://www.viamed.co.uk/xref)

Alternatively, or if your oxygen sensor or equipment is not listed, please contact us and we will check our comprehensive database.



0110501  
MOX1



**REF:** AA829-210  
**Output Connector:** 3-pin Molex  
**Sensor Output:** 9.0 - 13.0 mV  
**Sensor Life:**  $\geq 1,500,000$  % oxygen hours  
**Response Time:**  $< 15$  seconds  
**Warranty:** 13 months



0110502  
MOX2



**REF:** AA829-220  
**Output Connector:** 3.5mm Mini Phone Jack  
**Sensor Output:** 9.0 - 13.0 mV  
**Sensor Life:**  $\geq 1,500,000$  % oxygen hours  
**Response Time:**  $< 15$  seconds  
**Warranty:** 13 months



0110503  
MOX3



**REF:** AA829-M10  
**Output Connector:** UK Data Socket AMP  
**Sensor Output:** 9.0 - 13.0 mV  
**Sensor Life:**  $\geq 1,500,000$  % oxygen hours  
**Response Time:**  $< 15$  seconds  
**Warranty:** 13 months



0110504  
MOX4



**REF:** AA829-M20  
**Output Connector:** UK Data Socket AMP  
**Sensor Output:** 9.0 - 13.0 mV  
**Sensor Life:** ≥ 1,500,000 % oxygen hours  
**Response Time:** < 15 seconds  
**Warranty:** 13 months



0110510  
INQOX



**REF:** AA844-210  
**Output Connector:** 3-pin Molex  
**Sensor Output:** 7.0 - 14.0 mV  
**Sensor Life:** ≥ 940,000 % oxygen hours  
**Response Time:** < 15 seconds  
**Warranty:** 13 months



0110511  
MOX20



**REF:** AAE29-210  
**Output Connector:** 3-pin Molex  
**Sensor Output:** 0.80 - 1.25 V in 210 mBar O<sub>2</sub>  
**Sensor Life:** ≥ 276,000 % oxygen hours  
**Response Time:** < 750 milliseconds at 0.5 lpm  
**Warranty:** 13 months



0110800  
OOMLF102

**Honeywell**



**Main OEM:** Honeywell (Envitec)  
**OEM Sensor Part No.:** 1002523  
**Output Connector:** Molex, 3 pin plug  
**Sensor Output:** 9.0 - 14.0 mV  
**Sensor Life:** < 700,000 hours  
**Response Time:** ≤ 12 seconds  
**Warranty:** 15 months



0110801  
OOMLF102-1

**Honeywell**



**Main OEM:** Honeywell (Envitec)  
**OEM Sensor Part No.:** 1002532  
**Output Connector:** Phone jack, 3.5 mm  
**Sensor Output:** 9.0 - 14.0 mV  
**Sensor Life:** < 700,000 hours  
**Response Time:** ≤ 12 seconds  
**Warranty:** 15 months



0110809  
OOMLF103

**Honeywell**



**Main OEM:** Honeywell (Envitec)  
**OEM Sensor Part No.:** 1002533  
**Output Connector:** Molex, 3 pin plug  
**Sensor Output:** 9.0 - 13.0 mV  
**Sensor Life:** < 2 years  
**Response Time:** ≤ 7 seconds  
**Warranty:** 15 months



# Lead-free Oxygen Sensors



## RoHS COMPLIANT



The Restriction of the Use of Certain Hazardous Substances (RoHS) in Electrical and Electronic Equipment (EEE) Directive (2011/65/EU) 8th June 2011 was transposed into UK law on the 2nd January 2013. Under the recast RoHS, lead anodes in electrochemical oxygen sensors had been granted exemption status until 22nd July 2021.

However, the European Commission received two exemption requests during the period November-January 2019/2020. Therefore, whilst the review process is carried out, the exemption status has in effect been extended, until the Commission's decision is finalised.

In the meantime, Viamed continues to introduce and phase in a range of RoHS Compliant lead-free alternatives. Should you be unable to find the lead-free alternative you require, please contact us or visit our website... [www.viamed.co.uk/xref](http://www.viamed.co.uk/xref)

# Honeywell

- **RoHS compliant (lead-free)**
- **One-to-one direct replacement for standard legacy 'leaded' sensors**

<b>Viamed Part No.</b>	<b>Original Sensor Description</b>	<b>Viamed Part No.</b>	<b>Honeywell Lead-Free Alternative</b>
<b>0110019</b>	Viamed R-17Vi	<b>0110801</b>	OOMLF102-1 / 1002532
<b>0110572</b>	Honeywell OOM102-1 / 01-00-0020	<b>0110801</b>	OOMLF102-1 / 1002532
<b>0110020</b>	Viamed R-22Vi	<b>0110800</b>	OOMLF102 / 1002523
<b>0110571</b>	Honeywell OOM102 / 01-00-0019	<b>0110800</b>	OOMLF102 / 1002523
<b>0110021</b>	Viamed R-22MEDV	<b>0110809</b>	OOMLF103 / 1002533
<b>0110574</b>	Honeywell OOM103 / 01-00-0015	<b>0110809</b>	OOMLF103 / 1002533
<b>0110040</b>	Viamed R-30V	<b>0110803</b>	OOMLF110 / 1002536
<b>0110577</b>	Honeywell OOM110 / 01-00-0098	<b>0110803</b>	OOMLF110 / 1002536
<b>0110041</b>	Viamed R-41V	<b>0110806</b>	OOMLF202-1 / 1002540
<b>0110585</b>	Honeywell OOM202-1 / 01-00-0021	<b>0110806</b>	OOMLF202-1 / 1002540
<b>0110044</b>	Viamed R-44V	<b>0110807</b>	OOMLF202-2 / 1002606
<b>0110586</b>	Honeywell OOM202-2 / 01-00-0068	<b>0110807</b>	OOMLF202-2 / 1002606
<b>0110045</b>	Viamed R-45V	<b>0110802</b>	OOMLF106 / 1002582
<b>0110049</b>	Viamed R-49V	<b>0110805</b>	OOMLF202 / 1002539
<b>0110560</b>	Honeywell OOM111 / 01-00-0114	<b>0110804</b>	OOMLF111 / 1002537



0110803  
OOMLF110

**Honeywell**



**Main OEM:** Honeywell (Envitec)  
**OEM Sensor Part No.:** 1002536  
**Output Connector:** Phone socket, 6P4C  
**Sensor Output:** 9.0 - 13.0 mV  
**Sensor Life:** < 700,000 hours  
**Response Time:** ≤ 12 seconds  
**Warranty:** 15 months



0110804  
OOMLF111

**Honeywell**



**Main OEM:** Honeywell (Envitec)  
**OEM Sensor Part No.:** 1002537  
**Output Connector:** Phone jack, 3.5 mm  
**Sensor Output:** 11.0 - 13.0 mV  
**Sensor Life:** < 700,000 hours  
**Response Time:** ≤ 12 seconds  
**Warranty:** 15 months



0110805  
OOMLF202

**Honeywell**



**Main OEM:** Honeywell (Envitec)  
**OEM Sensor Part No.:** 1002539  
**Output Connector:** Molex, 3 pin plug  
**Sensor Output:** 10.0 - 14.0 mV  
**Sensor Life:** < 700,000 hours  
**Response Time:** ≤ 12 seconds  
**Warranty:** 15 months



0110806  
OOMLF202-1

**Honeywell**



**Main OEM:** Honeywell (Envitec)  
**OEM Sensor Part No.:** 1002540  
**Output Connector:** Phone jack, 3.5 mm  
**Sensor Output:** 10.0 - 14.0 mV  
**Sensor Life:** < 700,000 hours  
**Response Time:** ≤ 12 seconds  
**Warranty:** 15 months



0110802  
OOMLF106

**Honeywell**



**Main OEM:** Honeywell (Envitec)  
**OEM Sensor Part No.:** 1002582  
**Output Connector:** Molex, 3 pin plug  
**Sensor Output:** 9.0 - 13.0 mV  
**Sensor Life:** < 700,000 hours  
**Response Time:** ≤ 12 seconds  
**Warranty:** 15 months



0110814  
OOMLF204-D

**Honeywell**



**Main OEM:** Honeywell (Envitec)  
**OEM Sensor Part No.:** E1002573  
**Output Connector:** Molex, 3 pin  
**Sensor Output:** 9.0 - 13.5 mV  
**Response Time:** < 30 seconds  
**Warranty:** 15 months





0110700  
MLF-03



**Main OEM:** I.T. Gambert  
**OEM Sensor Part No.:** 410303  
**Output Connector:** Phone jack, 3.5 mm  
**Sensor Output:** 13.0 - 16.5 mV  
**Sensor Life:** ≥ 2,000,000 % oxygen hours  
**Response Time:** ≤ 7 seconds  
**Warranty:** 15 months



0110701  
MLF-04



**Main OEM:** I.T. Gambert  
**OEM Sensor Part No.:** 410606  
**Output Connector:** Molex, 3 pin plug  
**Sensor Output:** 13.0 - 16.5 mV  
**Sensor Life:** ≥ 2,000,000 % oxygen hours  
**Response Time:** ≤ 7 seconds  
**Warranty:** 15 months



0110702  
MLF-12A



**Main OEM:** I.T. Gambert  
**OEM Sensor Part No.:** 410417  
**Output Connector:** Molex, 3 pin plug  
**Sensor Output:** 9.0 - 13 mV  
**Sensor Life:** ≥ 2,000,000 % oxygen hours  
**Response Time:** ≤ 7 seconds  
**Warranty:** 15 months



0110703  
MLF-15



**Main OEM:** I.T. Gambert  
**OEM Sensor Part No.:** 410523  
**Output Connector:** Phone jack, 3.5 mm  
**Sensor Output:** 8.0 - 13.0 mV  
**Sensor Life:** ≥ 2,000,000 % oxygen hours  
**Response Time:** ≤ 7 seconds  
**Warranty:** 15 months



0110704  
MLF-16



**Main OEM:** I.T. Gambert  
**OEM Sensor Part No.:** 470316  
**Output Connector:** Molex, 3 pin plug  
**Sensor Output:** 9.0 - 13.0 mV  
**Sensor Life:** ≥ 2,000,000 % oxygen hours  
**Response Time:** ≤ 7 seconds  
**Warranty:** 15 months



0110705  
MLF-19



**Main OEM:** I.T. Gambert  
**OEM Sensor Part No.:** 470042  
**Output Connector:** Phone socket, 4 way  
**Sensor Output:** 9.0 - 13.0 mV  
**Sensor Life:** ≥ 2,000,000 % oxygen hours  
**Response Time:** ≤ 7 seconds  
**Warranty:** 15 months



0110706  
MLF-43



**Main OEM:** I.T. Gambert  
**OEM Sensor Part No.:** 410032  
**Output Connector:** Slip rings, 2  
**Sensor Output:** 11.0 - 15.0 mV  
**Sensor Life:** ≥ 2,000,000 % oxygen hours  
**Response Time:** ≤ 7 seconds  
**Warranty:** 15 months

0110707  
MLF-60HC



**Main OEM:** I.T. Gambert  
**OEM Sensor Part No.:** 410040  
**Output Connector:** Molex, 3 pin plug  
**Sensor Output:** 0.8 - 1.25 V  
**Sensor Life:** ≥ 2,000,000 % oxygen hours  
**Response Time:** ≤ 7 seconds  
**Warranty:** 15 months

0110708  
MLF-650



**Main OEM:** I.T. Gambert  
**OEM Sensor Part No.:** 410033  
**Output Connector:** Molex, 3 pin plug  
**Sensor Output:** 9.0 - 14.0 mV  
**Sensor Life:** ≥ 1,000,000 % oxygen hours  
**Response Time:** ≤ 650 milliseconds  
**Warranty:** 15 months

0110709  
MLF-350



**Main OEM:** I.T. Gambert  
**OEM Sensor Part No.:** 410035  
**Output Connector:** Molex, 3 pin plug  
**Sensor Output:** 9.0 - 14.0 mV  
**Sensor Life:** ≥ 1,000,000 % oxygen hours  
**Response Time:** ≤ 350 milliseconds  
**Warranty:** 15 months

0110710  
MLF-16D



**Main OEM:** I.T. Gambert  
**OEM Sensor Part No.:** 471116  
**Output Connector:** Molex, 4 pin plug  
 (digital sensor output signal, I<sup>2</sup>C interface)  
**Sensor Output:** 2546 - 4455 bytes  
**Sensor Life:** ≥ 2,000,000 % oxygen hours  
**Response Time:** ≤ 7 seconds  
**Warranty:** 15 months

0110547  
KE-25F3LFM



**Output Connector:** Untermated  
**Inlet Connector:** Threaded  
**Range:** 0 - 100% oxygen  
**Sensor Output:** 5.0 - 8.0 mV  
**Sensor Life:** 6 years  
**Response Time:** 15 seconds  
**Warranty:** 12 months



# Gas Sensors

- Capable of continuous measurement
- 4th electrode for additional temperature stability




Nitric Oxide **NO**

Nitrogen Dioxide **NO<sub>2</sub>**

Carbon Monoxide **CO**

**0110990**  
**A3MEF**



Awaiting Image

**Gas:** Carbon Monoxide  
**Maximum Range:** 4000 ppm CO  
**REF:** MBU90-014  
**Output Connector:** ??  
**Response Time:** < 40 seconds

0110490  
MN01

**Gas:** Nitric Oxide  
**Application:** Inhaled Nitric Oxide Therapy  
**REF:** AF0F4-H00 std.  
**Output Connector:** UK Data Socket AMP  
**Sensor Output:** 9.0 - 13.0 mV  
**Expected Life:** 12 months  
**Response Time:** < 15 seconds  
**Warranty:** 12 months

0110491  
MN01B

**Gas:** Nitric Oxide  
**Application:** Inhaled Nitric Oxide Therapy  
**REF:** AF0F7-H00 w/bias  
**Output Connector:** UK Data Socket AMP  
**Sensor Output:** 9.0 - 13.0 mV  
**Expected Life:** 12 months  
**Response Time:** < 15 seconds  
**Warranty:** 12 months

0110492  
MN02

**Gas:** Nitric Oxide  
**Application:** Inhaled Nitric Oxide Therapy  
**REF:** AF7F4-400 std.  
**Output Connector:** UK Data Socket AMP  
**Sensor Output:** 9.0 - 13.0 mV  
**Expected Life:** 12 months  
**Response Time:** < 15 seconds  
**Warranty:** 12 months

0110493  
MN02B

**Gas:** Nitric Oxide  
**Application:** Inhaled Nitric Oxide Therapy  
**REF:** AF7F7-400 w/bias  
**Output Connector:** UK Data Socket AMP  
**Sensor Output:** 9.0 - 13.0 mV  
**Expected Life:** 12 months  
**Response Time:** < 15 seconds  
**Warranty:** 12 months

0110495  
MND1S

**Gas:** Nitrogen Dioxide  
**Application:** Inhaled Nitric Oxide Therapy  
**REF:** AG010-H00  
**Output Connector:** UK Data Socket AMP  
**Sensor Output:** 9.0 - 13.0 mV  
**Expected Life:** 12 months  
**Response Time:** < 15 seconds  
**Warranty:** 12 months

0110496  
MND2

**Gas:** Nitrogen Dioxide  
**Application:** Inhaled Nitric Oxide Therapy  
**REF:** AG7F4-400  
**Output Connector:** UK Data Socket AMP  
**Sensor Output:** 9.0 - 13.0 mV  
**Expected Life:** 12 months  
**Response Time:** < 15 seconds  
**Warranty:** 12 months

# UltraMaxO<sub>2</sub>

The UltraMaxO<sub>2</sub> offers a fast and easy verification of oxygen concentration, flow and outlet pressure of oxygen concentrators

0111265

- Accurately measures oxygen, flow & pressure
- No oxygen sensor required
- No in-field calibration
- Self-diagnostics
- Shielded, reinforced sample gas inlet port
- Measurement range: 20.9 - 96%
- Warranty: 36 months



Gas Sample Inlet

LCD Display

Gas Sample Outlet

Impact Resistant Ergonomic Case



# OxiQuant S

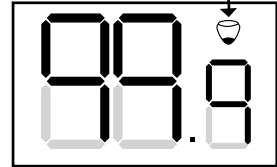
# Honeywell

## Oxygen Analyser

Used to determine oxygen concentrations in gas mixtures, delivered by oxygen concentrators, blenders...



Low battery indicator



0111275

- Flexible manual calibration
- Auto-off (after 3 minutes)
- Response time:  
< 13 seconds to 90% of value
- Sensor (with integrated battery)  
can be replaced
- Warranty: Analyser 24 months,  
sensor 15 months

**Note:** Not approved for monitoring medical breathing air whilst in direct contact with patients.

CE

**Includes operator manual and the following standard accessories:**

0110660



OOI103  
Oxygen Sensor

0120399 Pk of 5



'T' Adapter 22mm I.D. -  
22mm O.D., T = 15mm I.D.  
Single Unit Supplied

0120092\*



Flow Diverter  
15 mm O.D.

0120124\*\*



Connector  
22 mm oxygen stem

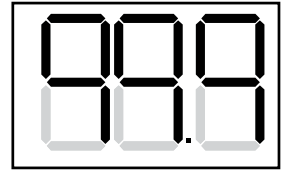
\* Also available in pack quantity 0120093 - pack of 10  
\*\* Also available in pack quantity 0120174 - pack of 50

Handi+



## Oxygen Analyser

This analyser is great for spot-checking oxygen percentage in hospitals, clinics and in homecare environments. Includes integrated sensor and battery.



0111250

- One-touch calibration (room air 20.9% oxygen, or 100% oxygen)
- Auto-off (after 80 seconds)
- Response time: < 15 seconds to 90% of value
- Disposable at end of sensor life
- Warranty: 24 months

CE0123

Includes operator manual and the following standard accessories:

0120399 Pk of 5



'T' Adapter 22mm I.D. - 22mm O.D., T = 15mm I.D.  
Single Unit Supplied

0120095



Flow Diverter  
15 mm O.D.

0120120



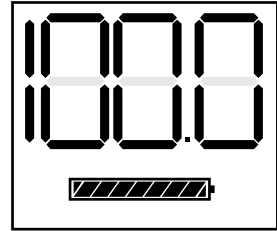
Oxygen Concentrator  
Adapter Cap

0111260

# MaxO<sub>2</sub>+A

The MaxO<sub>2</sub>+A analyser is ideal for checking oxygen percent accuracy in oxygen concentrators.

- Integral sensor
- Long battery life (approximately 5,000 hours on 2 x AA batteries)
- Ergonomic hand-held design
- Impact resistant and drip proof
- Large LCD with 3.5 digit display
- One-touch calibration
- Warranty: 24 months



CE0123

## Includes the following standard accessories:

**0110427**




**MAX-250+ Oxygen Sensor**

**0120399 Pk of 5**



**'T' Adapter 22mm I.D. - 22mm O.D., T = 15mm I.D.**  
Single Unit Supplied

**0120095**



**Flow Diverter 15 mm O.D.**

**0120120**



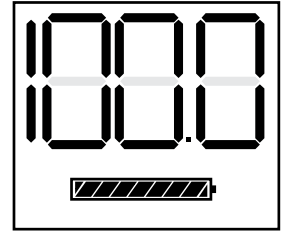
**Oxygen Concentrator Adapter Cap**

# MaxO<sub>2</sub>+AE

The MaxO<sub>2</sub>+AE is best used anywhere an inline analyser is needed, when alarms are not deemed important. It is especially useful in conjunction with older ventilators or oscillators.

Standard cable version - 0111261  
Short cable version - 0111262

- External sensor
- Long battery life (approximately 5,000 hours on 2 x AA batteries)
- Ergonomical hand-held design
- Impact resistant and drip proof
- Large LCD with 3.5 digit display
- One-touch calibration
- Warranty: 24 months



CE0123

## Includes the following standard accessories:

0110429




**MAX-250E Oxygen Sensor**

0120399 Pk of 5



**'T' Adapter 22mm I.D. - 22mm O.D., T = 15mm I.D. Single Unit Supplied**

0120095



**Flow Diverter 15 mm O.D.**

0121302

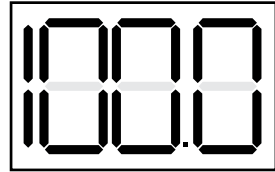


**'V' Mount Assembly**

# MaxO<sub>2</sub> ME Oxygen Monitor

The MaxO<sub>2</sub> ME oxygen monitor with backlit LCD display, smart alarms, built-in kickstand and protective overmould

- Long battery life (approximately 5,000 hours on 4 x AA batteries)
- Adjustable alarms from 15 - 99%
- Smart alarms
- Sets alarms 3% ± current reading
- Back lit LCD display
- DC power port (power supply sold separately)
- Protective overmould
- Built-in kickstand and dove tail mount
- Warranty: 24 months



CE 0123

## Includes the following standard accessories:

**0131700**

**Sensor Cable**  
Coiled, 10ft fully extended, straight connectors.

**0110452**

**MAX-550E  
Oxygen Sensor**

**0120399 Pk of 5**

**'T' Adapter 22mm I.D. -  
22mm O.D., T = 15mm I.D.**  
Single Unit Supplied

**0120095**

**Flow Diverter  
15 mm O.D.**

See page 36 for optional extra accessories...

# Oxygen Monitoring Accessories

		<input checked="" type="checkbox"/> Supplied as Standard <input type="checkbox"/> Optional Accessories								
Part No.	Description	OxiQuant S	Handi+	MaxO <sub>2</sub> +A	MaxO <sub>2</sub> +AE	MaxO <sub>2</sub> ME	MySign O Monitor Only	MySign O Kit		
0120099	Teledyne Flow Diverter 15 mm O.D.	<input type="checkbox"/>	<input type="checkbox"/>	<input type="checkbox"/>	<input type="checkbox"/>	<input type="checkbox"/>	<input type="checkbox"/>	<input type="checkbox"/>		
0120092	Viamed Flow Diverter 15 mm O.D.	<input checked="" type="checkbox"/>	<input type="checkbox"/>	<input type="checkbox"/>	<input type="checkbox"/>	<input type="checkbox"/>	<input checked="" type="checkbox"/>	<input checked="" type="checkbox"/>		
0120095	Maxtec Flow Diverter 15 mm O.D.	<input type="checkbox"/>	<input checked="" type="checkbox"/>	<input checked="" type="checkbox"/>	<input checked="" type="checkbox"/>	<input checked="" type="checkbox"/>	<input type="checkbox"/>	<input type="checkbox"/>		
0120097	Maxtec Flow Diverter 18 mm O.D.	<input type="checkbox"/>	<input type="checkbox"/>	<input type="checkbox"/>	<input type="checkbox"/>	<input type="checkbox"/>	<input type="checkbox"/>	<input type="checkbox"/>		
0120399	'T' Adapter 22 mm I.D. - 22 mm O.D.	<input checked="" type="checkbox"/>	<input checked="" type="checkbox"/>	<input checked="" type="checkbox"/>	<input checked="" type="checkbox"/>	<input checked="" type="checkbox"/>	<input checked="" type="checkbox"/>	<input checked="" type="checkbox"/>		
0120103	'T' Adapter 15 mm I.D. - 15 mm O.D., T = 15 mm I.D. for paediatric circuits	<input type="checkbox"/>	<input type="checkbox"/>	<input type="checkbox"/>	<input type="checkbox"/>	<input type="checkbox"/>	<input type="checkbox"/>	<input type="checkbox"/>		
0121205	Calibration Assembly	<input type="checkbox"/>	<input type="checkbox"/>	<input type="checkbox"/>	<input type="checkbox"/>	<input type="checkbox"/>	<input type="checkbox"/>	<input type="checkbox"/>		
0120101	Adapter Cap 22 mm I.D.	<input type="checkbox"/>	<input type="checkbox"/>	<input type="checkbox"/>	<input type="checkbox"/>	<input type="checkbox"/>	<input type="checkbox"/>	<input type="checkbox"/>		
0120102	Adapter Cap 22 mm O.D.	<input type="checkbox"/>	<input type="checkbox"/>	<input type="checkbox"/>	<input type="checkbox"/>	<input type="checkbox"/>	<input type="checkbox"/>	<input type="checkbox"/>		
0120120	Oxygen Concentrator Adapter Cap	<input type="checkbox"/>	<input checked="" type="checkbox"/>	<input checked="" type="checkbox"/>	<input type="checkbox"/>	<input type="checkbox"/>	<input type="checkbox"/>	<input type="checkbox"/>		
0120125	Oxygen Connector 22 mm I.D. - 22 mm I.D.	<input type="checkbox"/>	<input type="checkbox"/>	<input type="checkbox"/>	<input type="checkbox"/>	<input type="checkbox"/>	<input type="checkbox"/>	<input type="checkbox"/>		
0120126	Oxygen Connector 22 mm O.D. - 22 mm O.D.	<input type="checkbox"/>	<input type="checkbox"/>	<input type="checkbox"/>	<input type="checkbox"/>	<input type="checkbox"/>	<input type="checkbox"/>	<input type="checkbox"/>		
0120127	Oxygen Connector 15 mm I.D./22 mm O.D. - 6.5 mm (tapered)	<input type="checkbox"/>	<input type="checkbox"/>	<input type="checkbox"/>	<input type="checkbox"/>	<input type="checkbox"/>	<input type="checkbox"/>	<input type="checkbox"/>		
0131150	Sensor Cable - Straight 3 m, right angled connectors						<input type="checkbox"/>	<input type="checkbox"/>		
0131201	Sensor Cable - Coiled 1 m, extendable, straight connectors						<input type="checkbox"/>	<input type="checkbox"/>		
0131202	Sensor Cable - Coiled 0.9 m, extendable, right angled connectors						<input type="checkbox"/>	<input type="checkbox"/>		
0121350	Sensor Cable - Coiled 0.5 m, extendable, right angled connectors						<input checked="" type="checkbox"/>	<input checked="" type="checkbox"/>		
0131700	Sensor Cable - Coiled 10ft fully extended, straight connectors					<input checked="" type="checkbox"/>				
0121302	'V' Mount Assembly			<input type="checkbox"/>	<input checked="" type="checkbox"/>					
0121180	'V' Wall Mount			<input type="checkbox"/>	<input type="checkbox"/>	<input type="checkbox"/>				
0121181	'V' Mount Pole Clamp: Small			<input type="checkbox"/>	<input type="checkbox"/>	<input type="checkbox"/>				
0121182	'V' Mount Pole Clamp: Large			<input type="checkbox"/>	<input type="checkbox"/>	<input type="checkbox"/>				
0121184	'V' Mount Rail Clamp			<input type="checkbox"/>	<input type="checkbox"/>	<input type="checkbox"/>				
0121197	'V' Mount Pole Clamp: Horizontal			<input type="checkbox"/>	<input type="checkbox"/>	<input type="checkbox"/>				
0121200	Universal Mounting Clamp			<input type="checkbox"/>	<input type="checkbox"/>					

Part No.	Description	OxiQuant S	Handi+	MaxO <sub>2</sub> +A	MaxO <sub>2</sub> +AE	MAXO <sub>2</sub> ME	MySign O Monitor Only	MySign O Kit
0121351	MySign O Universal Mounting Clamp						•	•
0121301	Belt Clip & Pin Assembly			•	•	•		
0121305	Rubber Overmould for Handi+, Blue		■					
0121300	Lanyard		■	■	■			
0110427	MAX-250+ Oxygen Sensor			■				
0110429	MAX-250E Oxygen Sensor				■			
0110430	MAX-250ESF Oxygen Sensor				•			
0110452	MAX-550E Oxygen Sensor					■		
0110560	OOM111 Oxygen Sensor						■	■
0110660	OOH03 Oxygen Sensor	■						
0120121	Flowcheck	•	•	•	•	•	•	•
0121318	Remote Power Supply including UK/USA/EU adapters					•		
0121352	Power Supply including UK/EU/USA/JPN adapters						•	■
0120124	Connector 22 mm oxygen stem	■	•	•	•	•	•	•

Flow Diverters for use with oxygen sensors with an M16 x 1 mm input thread


**0120099**  
  
  
 15 mm O.D.


**0120092 Single**  
 0120093 Pk of 10  
  
  
 15mm O.D.


**0120095**  
 R110P10-001  
  
  
 15 mm O.D.

**0120097**  
 RP33P42-002  
  
  
 18 mm O.D., Available with or without 'O' Rings

T Adapters for use with 15 mm O.D. flow diverters

**0120399**  
 Box of 5  
  
 22 mm I.D. - 22 mm O.D.  
 T = 15 mm I.D.

**0120113**  
 Box of 40  
  
 15 mm I.D. - 15 mm O.D.  
 T = 15 mm I.D. for paediatric circuits

**0121205**  
  
 Calibration Assembly

## Adapter Caps

Connects to oxygen sensors/analysers/monitors that have M16 x 1 mm input thread

## Connectors

0120101



22 mm I.D.

0120102



22 mm O.D.

0120120



Oxygen Concentrator Adapter Cap

0120174  
Pack of 50



Connector  
22 mm O.D. - 6 mm oxygen stem

## Connectors

0120175  
Box of 35



22 mm I.D. - 22 mm I.D.

0120126 Single  
0120176 Box of 40



15 mm I.D./22 mm O.D. -  
22 mm O.D.

0120177  
Box of 45



15 mm I.D. /22 mm O.D. -  
6.5 mm (tapered)

0120178  
Box of 50



15 mm I.D. - 22 mm I.D.

## Flow Check Available Whilst Stock Lasts

0120129  
Pack of 35



22 mm O.D - 30 mm O.D.



### Maxtec FlowCheck

Working in conjunction with oxygen analysers, providing users with the ability to check oxygen concentration and flow all at once. This flowmeter will indicate the flow from 0 - 8 litres per minute and is useful in multiple applications.

- Simple to use and easy to read
- Convenient pocket-size
- For sensors/analysers with threaded input M16 x 1 mm
- Check flow and O<sub>2</sub>% all-in-one
- Range 0 - 8 LPM
- Accuracy ± 0.4 LPM

0120121



Whilst stocks last

## Cables with screw lock connectors

for use with oxygen sensors that have a 3.5 mm/0.141" jack output connector

0131150



(Straight 3m)  
Right angled connectors

0131201



(Coiled 1m, extendable) Straight  
connectors

0131202



(Coiled 0.9m, extendable) Right  
angled connectors

## Monitor Mounting Options for use with Teledyne AX300/MX300 and Maxtec monitors

0121180



**'V' Wall Mount**

0121181



**'V' Mount Pole Clamp**  
Small:  
14 - 25 mm clamping width

0121182



**'V' Mount Pole Clamp**  
Large:  
16 - 40 mm clamping width

0121184



**'V' Mount Rail Clamp**  
Attaches to most types of medrail 30 mm (H) x 10 mm (D)

0121197



**'V' Mount Pole Clamp**  
Horizontal  
10 - 44 mm clamping width

0121200



**Universal Mounting Clamp**  
Attaches to the threaded socket on the rear of the units

## Maxtec Specific Accessories



0121302



**'V' Mount Assembly**  
for use with Maxtec MaxO<sub>2</sub> To  
attach to V mount clamps

0121301



**Belt Clip &  
Pin Assembly**

0121305



**Rubber Overmould,  
Blue** for use with Handi+

0121300  
RP76P06



**Lanyard**

0110427



**MAX-250+  
Oxygen Sensor**

0110429



**MAX-250E  
Oxygen Sensor**

0110430



**MAX-250ESF  
Oxygen Sensor**

0110452



**MAX-550E  
Oxygen Sensor** for use  
with MaxO<sub>2</sub> ME Oxygen Monitors

0131700



**Sensor Cable**  
Coiled, 10ft fully extended,  
straight connectors.  
For use with MaxO<sub>2</sub> ME

0121318



**Remote Power Supply**  
Supplied for use with MaxO<sub>2</sub> ME  
includes UK, EU, USA/AUS adapters

Honeywell (Envitec) Specific Accessories



**0110560**




**OOM111**  
Oxygen Sensor

**0110660**



**OOI103**  
Oxygen Sensor

**0121353**



**USB Cable**

**0121352**



**MySign O Mains Power Supply** including UK / EU / USA / JPN adapter

**0121350**



(Coiled 0.5m, extendable)  
Right angled connector

**0121351**




**MySign O Universal Mounting Clamp**  
The convenient robust aluminium one-piece universal mounting clamp from Honeywell (Envitec) fits any shape of rail, can be adjusted and fastened in any position

# Disposable EEG Sensors

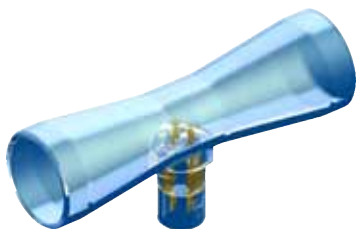
for monitoring the depth of anaesthesia as well as acquisition and transmission of biological EEG signals

- BIS EEG Compatible with a large range of BIS™ monitors and modules
- GE Entropy Compatible
- Clinically tested, high-measurement accuracy
- Soft and bio-compatible material
- Latex-free
- Adapter cables also available



# Flow Sensors

For flow measurement of gas delivered by anaesthesia systems and ventilators.

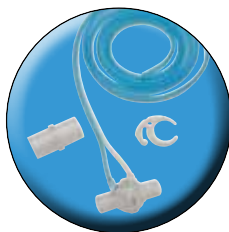


## **SpiroTrue A - Single Use Flow Sensor**

**Hot-wire anemometric flow sensor**

Compatible to the Dräger SpiroLife flow sensor: Part no. 8403735.

Viamed Part Number: 4310007



## **SpiroTrue H - Single Use Flow Sensor**

**Differential pressure flow sensor  
for use with Hamilton ventilators**

Compatible to Hamilton Medical H7400 Accu Tach flow sensor

Viamed Part Number: 4310009



**Viamed Limited** · 15 Station Road · Cross Hills  
Keighley · West Yorkshire · BD20 7DT · United Kingdom  
Tel: +44 (0)1535 634 542 Fax: +44 (0)1535 635 582  
Email: [info@viamed.co.uk](mailto:info@viamed.co.uk) Website: [www.viamed.co.uk](http://www.viamed.co.uk)

**All trademarks and trade names referenced in this material are the property of their respective owners.**

OEM application details are provided in good faith without responsibility.

Images are for illustrative purposes only. Cover image supplied by Vecteezy.com

Specification subject to change



**Part Number: 9990100**  
**UK**

**Date: 05/26**