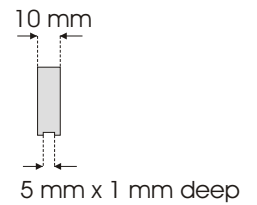
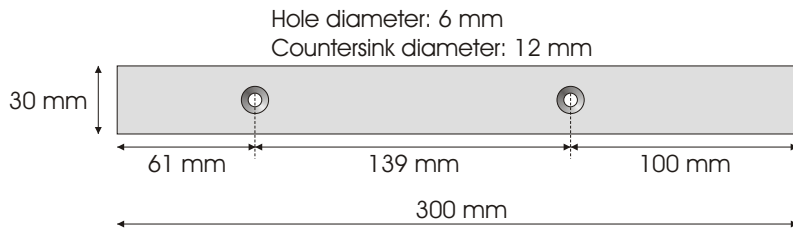
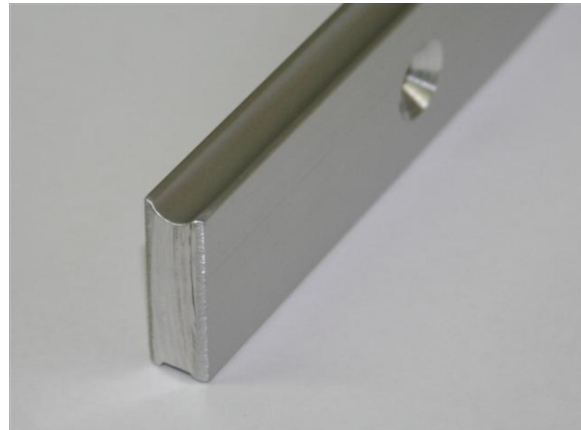
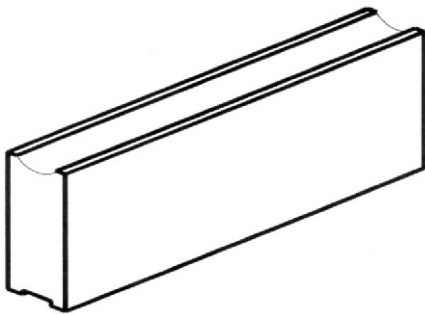
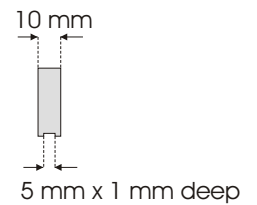
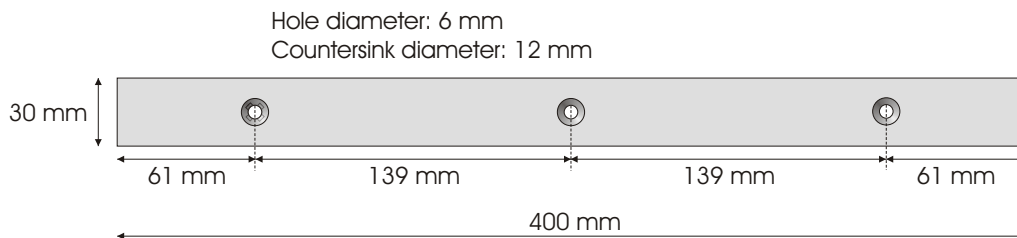


Rail sections for post-2008 cabinets

Rail - PP8767



Rails - PP8768

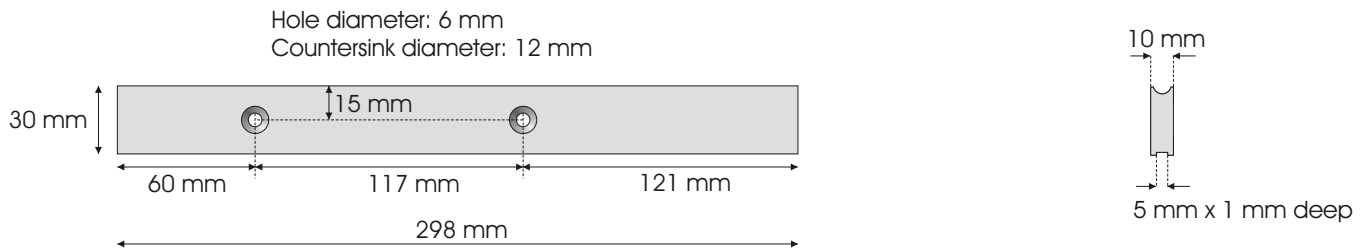


Note: the example above has a curved recess along the top, this is not necessary but the straight recess along the bottom is necessary.

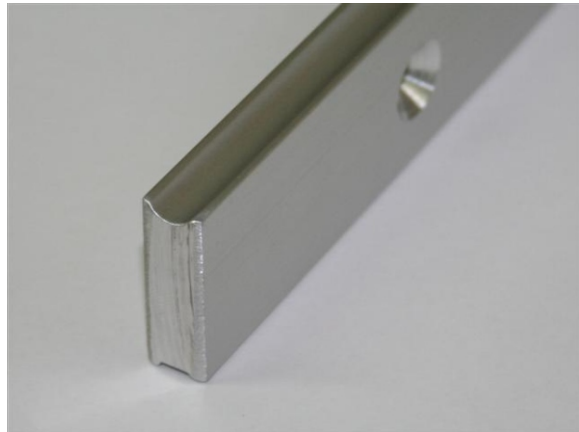
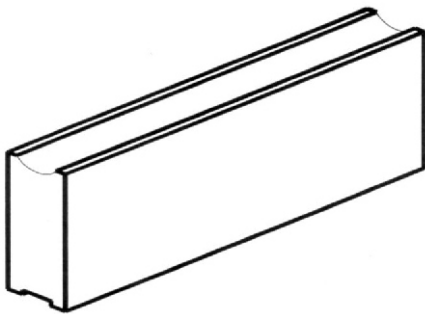
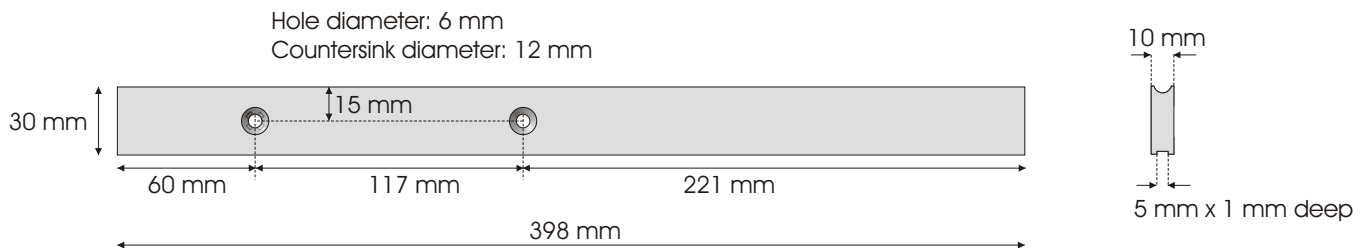
Material: anodised extruded aluminium

Rail sections for upgrading pre-2008 cabinet

Rail - PP8765



Rail - PP8766



Note: the example above has a curved recess along the top, this is not necessary but the straight recess along the bottom is necessary.

Material: anodised extruded aluminium