

NOTES: UNLESS OTHERWISE SPECIFIED.

1. LABEL PER CUSTOMER SPECIFICATION
2. CONNECTIONS POLARITY :

NEGATIVE(-) POSITIVE(+)

MATING PLUG- MOLEX P/N:
22-01-3037 OR
22-01-2037



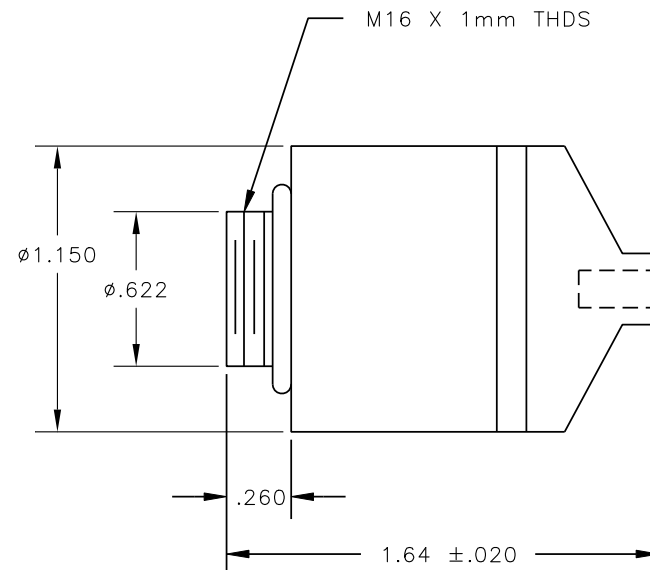
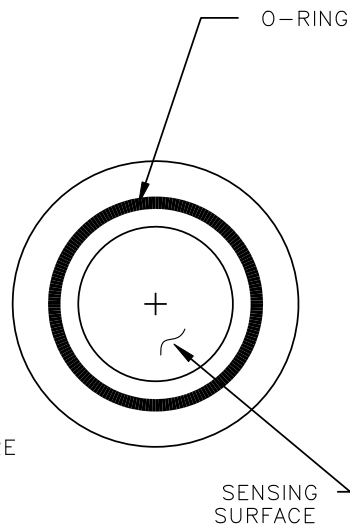
NOT FOR CUSTOMER CONNECTION

3. TEMPERATURE COMPENSATION ERROR IS $\pm 5\%$ OF FULL SCALE OVER THE OPERATING TEMPERATURE RANGE. WORST CASE TRACKING ERROR (WITHIN THE FIRST HOUR AFTER A MAXIMUM TEMPERATURE STEP) IS $\pm 7.5\%$ OF FULL SCALE. (GAS SAMPLES MUST BE BROUGHT TO AMBIENT TEMPERATURE) PERCENT READOUT IS ONLY WITHIN $\pm 1\%$ AT CONSTANT PRESSURE (E.G. A 10% INCREASE IN PRESSURE WILL RESULT IN A 10% INCREASE IN READING).
4. ASSEMBLY TO BE PACKAGED IN A GAS BARRIER BAG.
5. ASSEMBLY MANUFACTURED AND TESTED AND MPD-61679 & C72148-R22SHO.

SPECIFICATIONS:


- 1) OUTPUT - $25 \pm 2\text{mV}$ IN AIR AT 25°C , SEA LEVEL.
- 2) RANGE - 0-1 ATM PO₂
- 3) ACCURACY - WITHIN $\pm 1\%$ OF FULL SCALE AT CONSTANT TEMPERATURE AND PRESSURE (0-1 ATM),
- 4) RESPONSE TIME - LESS THAN 6 SECONDS FOR 90% OF FINAL VALUE.
- 5) OFFSET - LESS THAN 0.5% OF OXYGEN EQUIVALENT AT 25°C (77°F) IN ZERO GAS AFTER 36 SECONDS.
- 6) HUMIDITY - 0 TO 99% R.H. (NON-CONDENSING).
- 7) OPERATING TEMPERATURE RANGE - 0 TO 40°C (32 TO 104°F).
- 8) STORAGE TEMPERATURE - 0 TO 50°C (32 TO 122°F).
- 9) AVG. EXPECTED CELL LIFE - 36 MONTHS IN AIR AT 25°C AND 50% R.H.
- 10) WEIGHT - 1.2 OZ (34 GRAMS).
- 11) LOAD - 3.2K REQUIRED.
- 12) APPLICATION - FOR SURFACE/ABOVE-WATER DIVING-CYLINDER VERIFICATION APPLICATIONS; NOT INTENDED FOR UNDERWATER USE.

TELEDYNE INSTRUMENTS
Analytical Instruments
Document Control
COPY



REVISIONS

REV	DESCRIPTION	DATE	APP.	REV. BY
0	INIT REL PER ECO 10-0140	06/16/10	MG	VF

ITEM	QTY	PART No.	DESCRIPTION		
BILL OF MATERIAL					
DO NOT SCALE DRAWING			THIS DRAWING IS THE PROPERTY OF TELEDYNE INSTRUMENTS AND CONTAINS CONFIDENTIAL INFORMATION. IT IS NOT TO BE COPIED, REPRODUCED OR USED WITHOUT WRITTEN PERMISSION.		
UNLESS OTHERWISE SPECIFIED DIMENSIONS ARE IN INCHES TOLERANCE: ANGULAR $\pm 1/2^\circ$ LINEAR $\begin{cases} .X &= \pm .1 \\ .XX &= \pm .02 \\ .XXX &= \pm .005 \end{cases}$			 TELEDYNE INSTRUMENTS <i>Analytical Instruments</i> A Teledyne Technologies Company City of Industry, California, 91748, USA		
SIGNATURES		DATE	TITLE SPEC. CONTROL DWG. OXYGEN SENSOR CLASS R22SHO		SCALE 2 : 1
DRFT: MGONZALEZ		06-16-10			SIM B72729
CHK:					SHEET 1 OF 1
APPR:					
ENGR: MGONZALEZ					
C.O.:					
CAD I.D. B84394-0		MATL. -----	DWG NO. B- 84394		REV 0