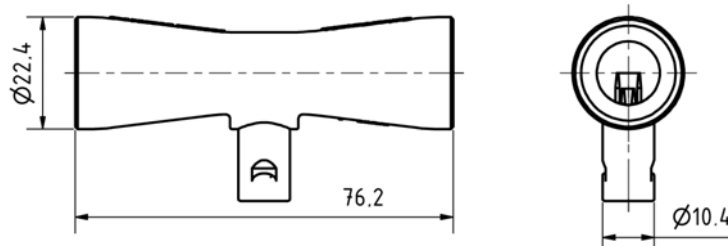


Specification Datasheet

Viamed

SpiroTrue A(PC)

Flow Sensor



CE

Part numbers	4310002 pack of 5
Model	SpiroTrue A(PC)
Primary packaging	PE pouch (bag) with 5 pieces or 5 sets

Technical Data

Measuring principle	Hot-wire anemometric principle
Reproducibility	≤ 5% at flow range 0 to 120l/min
Housing material	PC (Polycarbonate), clear transparent
Connector	4 pin gold plated
Weight	≤ 11g
Components conform to	2011/65/EC (RoHS)
Conforms to	EN ISO 10993-5
Designed in accordance with	93/42/EEC (Annex I and Annex II)
Classification in accordance with	Annex IX of 93/42/EEC: class IIa
Compatible to	Dräger Spirolog REF 8403735, SpiroLife REF MK01900
Packaging	Non-sterile
Storage temperature	-20°C to 50°C
Humidity (R.H.)	5% to 95%
Storage period	≤ 3 years (unopened, away from direct sunlight)
Operating temperature	10°C to 40°C
Relative humidity	5 to 95%, non-condensing

Notes: Before using the sensor consult the appropriate ventilator user instructions for more detailed information.

Applications

Devices without RFID functionality e.g. Evita family, Savina family, Fabius family, Primus/Apollo, Julian, Cato, Cicero
 Flow module A for SpiroTrue A/APC

Sensor life

The sensor can be used as long as the calibration procedure can be carried out in the anaesthesia or ventilation equipment.

Sensor disinfection

The following equipment disinfectants may be used: Korsolex Basic/Extra/Plus; Gigasept FF/AF; Incidin liquid
 Disinfect the flow sensor by immersion

Sensor cable available separately

Cable length: 500mm
 Cable OD: 5mm
 Cable jacket: Medical grade PVC, RAL 7032
 Plug over moulded: Medical grade PVC, RAL 7032