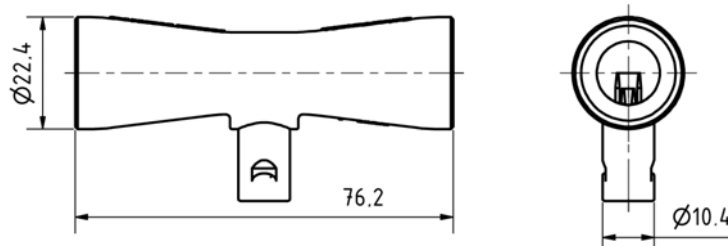


Specification Datasheet

Viamed

SpiroTrue A(PC)

Flow Sensor



CE

Part numbers	4310002 pack of 5
Model	SpiroTrue A(PC)
Primary packaging	PE pouch (bag) with 5 pieces or 5 sets
Secondary packaging	Box of 10 bags x 20pcs/sets each. 200pcs/200 sets total per box

Technical Data

Sensor measuring principle	Hot-wire anemometric principle
Sensor reproducibility	≤ 5% at flow range 0 to 120l/min
Sensor housing material	MABS (Methylmethacrylate-Acrylnitril-Butadien-Styrol), clear transparent
Connector	4 pin gold plated
Sensor weight	≤ 11g
Sensor dead space	≤ 7ml
Sensor cable	Cable length: 500mm Cable jacket: Medical grade PVC, RAL 7032 Plug over moulded: Medical grade PVC, RAL 7032
Recommended storage temperature	-20°C to 50°C
Humidity (R.H.)	5% to 95%
Recommended period of storage	≤ 3 years (unopened packaging and kept away from sunlight)
Recommended operating temperature	10°C to 40°C
Relative humidity	≤ 95%, non-condensing
Warranty period	0 months from date of sales invoice

Sensor is in non-sterile packaging
 Sensor designed in accordance with 93/42/EEC (Annex I and Annex II)
 Sensor conforms to EN ISO 10993-5
 Sensor components conforms to 2011/65/EC (RoHS)
 Classification in accordance with Annex IX of 93/42/EEC: class IIa
 Compatible to the Dräger Spirolog ref 8403735

Please note: Before using the sensor consult the appropriate ventilator user instructions for information regarding the risks related to the use of this product.

Applications

Devices without RFID functionality e.g. Evita family, Savina family, Fabius family, Primus/Apolo, Julian, Cato, Cicero
 Flow module A for SpiroTrue A/APC

Sensor disinfection

The following equipment disinfectants may be used: Korsolex Basic/Extra/Plus; Gigasept FF/AF; Incidin liquid
 Disinfect the flow sensor by immersion

SpiroTrue A/APC – typical flow curve with Flow-A module

