

Technical data

Specifications		
Principle of measurement	Electrochemical BLUEPOINT-Sensor with high precision intelligent microprocessor sampling system	
Measurement units (selectable)	µg/L, g/210L, µg/100mL, µg%, %, g/L, mg/100mL, mg%, mg/mL, P/A/F, P/F	
Measurement range	BrAC	0.00 to 2.6 mg/l
	BAC	0.00 to 5.50 ‰
Measurement accuracy	BrAC	0 to 0.476 mg/l: 0.008 mg/l > 0.476 mg/l to 1mg/l: 4 % of measured value
	BAC	0 bis 1‰: 0.017 ‰ > 1 ‰ to 2 ‰: 4 % of measured value
Ready for operation	≤ 6 s after switching on, over the whole temperature range	
Result after completing a measurement	BrAC	≤ 2 s at 0.00 mg/l ≤ 6 s at 0.50 mg/l; ≤ 10 s at 1.00 mg/l
	BAC	≤ 2 s at 0.00 ‰ ≤ 6 s at 1.00 ‰; ≤ 10 s at 2.00 ‰
Sampling	Active Mode	Automatically sampling after achieving the minimal volume (1.2 L)
	Passive Mode	Passive sampling (without mouthpiece) after manually trigger of the sampling, quantitative analysis
	Fast Mode	Automatically sampling after blowing at least 3 s, for individuals with lung diseases, (e.g. Asthma, COPD), quantitative to semi-quantitative analysis
	Scan Mode	Passive sampling (without mouthpiece) after manually trigger of the sampling, qualitative analysis
	Mouth Alcohol Mode	Double automatically samplings after achieving the minimal volume, quantitative analysis
Display	Active OLED colour display (34 mm x 29 mm)	
Signal generator	Different acoustic signals supporting visual display and alarm indicator	
Device set-up access	Through device menu (with PIN access protection), Level are configurable; service, supervisor	
Data memory	up to 9999 measurements; configurable	
Calibration	Wet and dry gas calibration	
Device language (selectable)	English, German, French, Dutch, Polish, other on request	
Environmental conditions		
Operation	- 5 to + 50 °C, 10 to 100 % rH (non-condensing), 600 to 1400 hPa	
Storage	- 20 to + 65 °C, 600 to 1400 hPa	
Miscellaneous		
Construction	Protection degree IP 43	
Power supply	4 x 1.5 V type Alkaline battery; (Mignon, LR6, AA), sufficient for typ. 1500 measurements, alternative rechargeable Li-Ion battery	
Dimensions (L x W x H)	185 mm x 55 mm x 40 mm	
Weight	approx. 250 g inclusive Alkaline batteries	
Standards	AlcoTrue® P is CE certified to IEC 60068-2-6: 2007, IEC 60068-2-27:2008, IEC 60068-2-64: 2008, IEC 60068-2-32: 1975 + A1/A2: 1990	

Specification subject to change

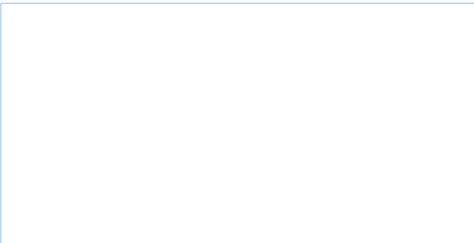
AlcoTrue® P

Professional breathalyser for rapid accurate determination of alcohol concentration

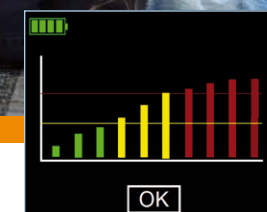
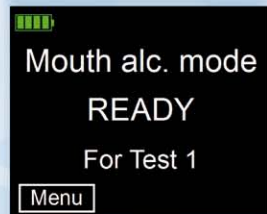
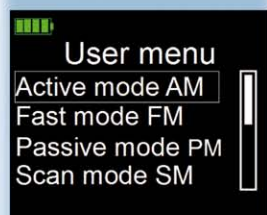


» PRODUCTS that care for you «

bluepoint® MEDICAL sales partner



AlcoTrue® P is CE certified to 89/336/EWG.
For further information, please visit www.bluepoint-medical.com



Easy to use, rapid operation «

Low cost of ownership, performance, long life

AlcoTrue® P – professional breathalyser for rapid accurate determination of alcohol concentration in exhaled air.

Key features

- Professional **bluepoint®** fuel cell technology
- High precision intelligent microprocessor sampling system
- Automatic self-test after switch on
- Rapid, precise and reliable measurements, even at sub-zero ambient conditions
- Intuitive user interface (self explanatory)
- Ready to test < 6 s, even at temperatures degrees below zero
- Results are shown on a colour display (screen)

- Compact, ergonomic design
- Low maintenance and spare part costs
- PC software
- min. 2 years warranty
- Active mode is set for breath alcohol detection (as used by police)

New and innovative measurement operation modes

- Fast Mode**
Useful for individuals who have a disease e.g. COPD, Asthma
- Scan Mode**
Qualitative identification of alcohol in exhaled air or ambient air
- Passive Mode**
Quantitative identification of alcohol in exhaled air
- Mouth Alcohol Mode**
Use for reasonable suspicion of mouth alcohol (optional)



Scan Mode: Detection of alcohol in interior rooms

The use of high precision intelligent microprocessor sampling system and measurement technology in AlcoTrue P provides low cost of ownership and unrivaled performance

Delivery package of AlcoTrue® P Carrying case compact

- AlcoTrue® P breathalyser
- 25 individually packed mouthpieces (S-Type)
- 4 x AA Alkaline batteries (LR6, MN 1500)
- Alkaline battery case
- User manual
- Carrying case (device plus 25 mouthpieces)

Optional accessories:

- Rechargeable Li-ion battery
- USB Li-Ion battery charger
- USB Li-Ion battery car adapter
- USB cable
- PC software including USB data cable
- AlcoPrint P thermotransfer printer with accessories
- Carrying case large (device plus all accessories)

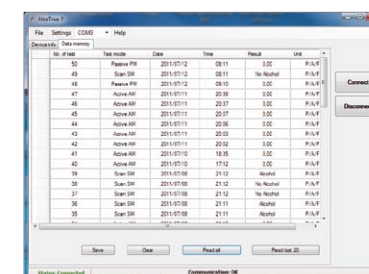
Additional accessories and options on request.



Carrying case large (optional)



Printer AlcoTrue P



PC software



Mouthpiece (S-Type)