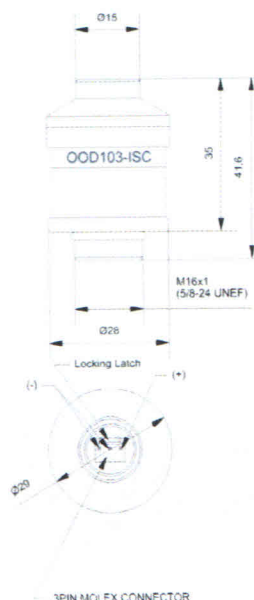


Confidential - For Vandagraph only!

Measurement Range:	0 - 100% oxygen
Output in Ambient Air:	9 to 13 mV
Electrical Interface:	OOD103: 3 pin (Molex 22-11-1031)
Repeatability:	< 1% vol. O ₂ @ constant temperature and pressure
Linearity error:	0.1 to 1.0 bar ppO ₂ < 3% relative 0.1 to 2.5 bar ppO ₂ < 5% relative (at ppO ₂ > 1.0 bar after 10 min. equilibration time)
Response time:	< 5 sec. to 90% of final value
Zero Offset Voltage:	< 0.5% oxygen reading in 100% nitrogen @ 25°C after 36 seconds
Cross Interference:	< 0.5% vol. O ₂ response to: 5% CO ₂ balance N ₂
Influence of Humidity:	- 0.03% rel. per % RH at 25°C
Pressure Range:	600 to 2500 mbar
Influence of Mechanical Shock:	< 1% relative after a fall from 1m
Operating Temperature:	0°C to 50°C
Temperature Compensation:	Built-in NTC compensation
Effect of Temperature Compensation:	Between 0°C and +50°C: 5% relative error (steady state)
Operating Humidity:	0 - 99% RH non-condensing
Long Term Output Drift:	< 1% vol. oxygen per month, typically < -15% relative over lifetime
Storage Temperature:	-20°C to +50°C
Recommended Storage:	+5°C to +15°C
Recommended Load:	≥ 10 kOhms
Warm-Up Time:	< 30 minutes, after replacement of sensor
Nominal Sensor Lifetime:	≥ 500,000% vol oxygen hours
Weight:	Approximately 28 grams
Warranty Period:	15 months (including 3-month shelf life)
Part No.:	OOD103-ISC: 1002106 (REF 8010012 / SC-I22D)

All specifications are applicable at standard conditions: 1013 mbar, 25°C dry ambient air.



All dimensions in mm (ISO 2768-m)



A. Nish
23/2/16

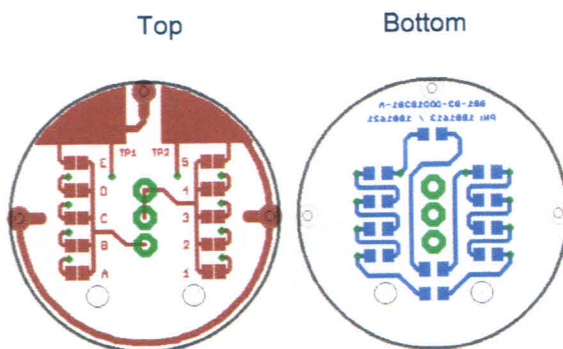
Confidential - For Vandagraph only!

Customized Design Specification:

- Integration of additional Zitex membrane in sensor gas diffusion way
- Conformal coating on the sensor PCB with PLASTIK 70
- 2 x 2mm holes drilled in the sensor PCB
- No information about EnviteC on PCB top / bottom sides, information for ordering process and traceability only

PCB Layout:

Types: 8010012



Product Labeling

For customized label specification see separate document 001-08-xxxx.



S. Nair
23/2/16

ENVITEC- WISMAR GMBH

Alter Holzhafen 18
D-23966 Wismar

Phone: +49-(0) 3841- 360 1
Fax: +49-(0) 3841- 360 222
E-Mail: info@envitec.com
<http://www.envitec.com>