

Verastream® Technology Gas Sampling Lines and Cannulas

⚠ Warning: Do not cut or remove any part of the sample line. Cutting the sample line could lead to erroneous readings.

⚠ Warning: Loose or damaged connections may compromise ventilation or cause an inaccurate measurement of respiratory gases. Securely connect all components and check connections for leaks according to standard clinical procedures.

⚠ Warning: Single-patient use. Due to risk of cross contamination, do not re-use.

⚠ Warning: Only for sampling of patients breathing gas, not intended to sample other substances.

⚠ Warning: Products with O₂ supply are not intended to deliver other gases or liquids to the patient.

ⓘ Caution: Do not attempt to clean, disinfect, sterilize or flush any part of the sampling line, as this can cause damage to the monitor.

ⓘ Caution: Dispose of sampling lines in accordance with standard operating procedures or local regulations for the disposal of contaminated medical waste.

Note: Replace the sampling line in accordance with hospital protocols or when a blockage is indicated by the patient monitoring device. Excessive patient secretions or a build-up of liquids in the airway tubing may occlude the sampling line, therefore requiring more frequent replacement.

Only for sampling lines with an airway adapter:

⚠ Warning: When using with a closed suction system, do not place the airway adapter (tee) between the suction catheter and endotracheal tube. This is to ensure that the airway adapter does not interfere with the functioning of the suction catheter.

⚠ Warning: Do not use to measure anaesthetic agent concentration.

Note: During nebulization or suction, in order to avoid moisture build up and sampling line occlusion, remove the sampling line connector from the monitor.

Note: Insert the sampling line connector into the patient monitoring device CO₂ port and ensure that it is connected securely to the patient monitoring device. This will ensure that there is no leakage of gases during measurement at the connection point and that measurement accuracy is not compromised.

Note: Following connection of the CO₂ sampling line, check that CO₂ values appear on the monitor display.

Note: During setup, ensure that airway adapter can be easily attached and detached from the tubing before proceeding.

Contraindication

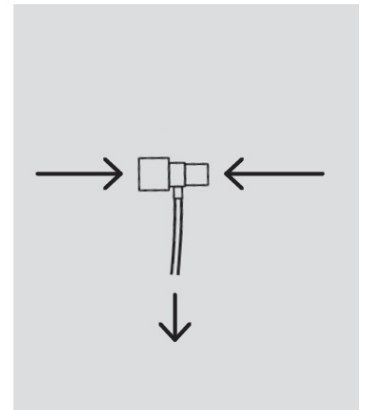
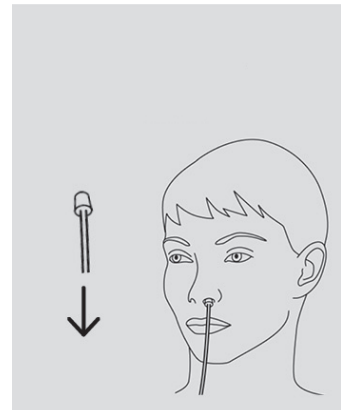
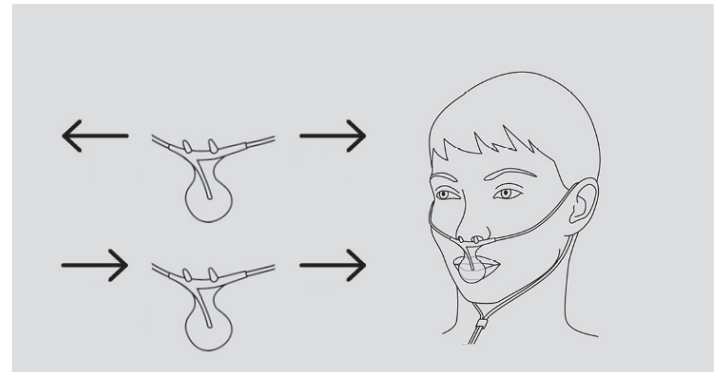
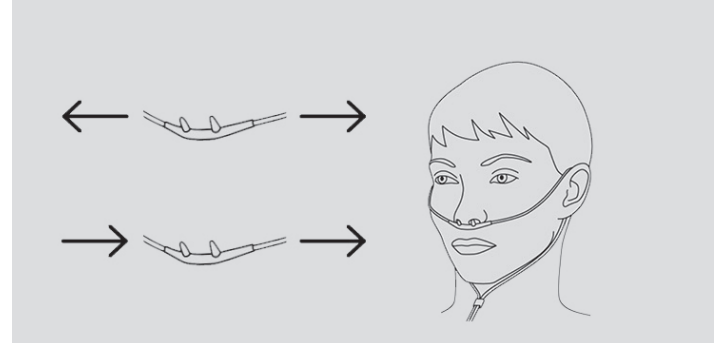
To avoid damage to the skin of the nose, do not exceed the maximal O₂ flow rate of 5 l/min.

There are no known contraindications for patient monitoring with the sampling lines provided that the data obtained by the gas monitoring is evaluated with consideration given to the patient's clinical condition.

Federal law (U.S.) restricts this device to sale by or on the order of a physician.

VersaStream® Instruction for use

For reasons of hygiene, replacing sampling lines within a maximum period of 72 hours is recommended.



	Single Patient Use		Consult Accompanying Documents
	Use By Date		Weights
	Pack Quantity		Storage Temperature
	CE Mark		Fire Hazard
	Latex Free		PHT Free
	No Syringe		Gas Inlet
	Manufacturer		Box Quantity