



## Disposable EEG Sensors

for monitoring the depth of anaesthesia as well as acquisition and transmission of biological EEG signals

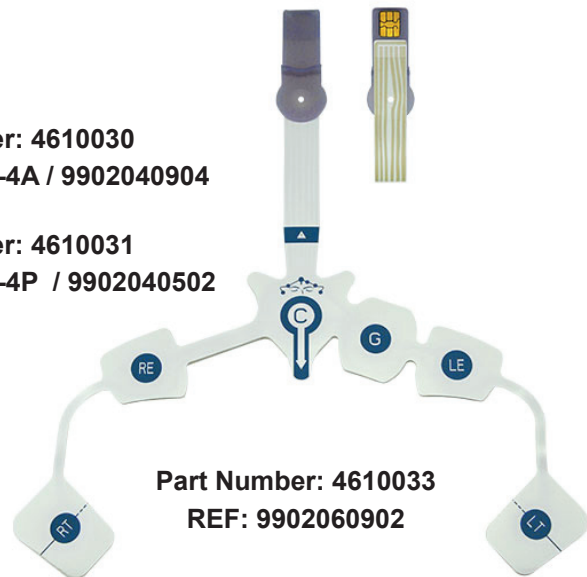
- BIS EEG sensors compatible with a wide range of BIS™ monitors and modules (\* see overleaf)
- GE Entropy Compatible
- Clinically tested, high-measurement accuracy
- Soft and bio-compatible material
- Latex-free



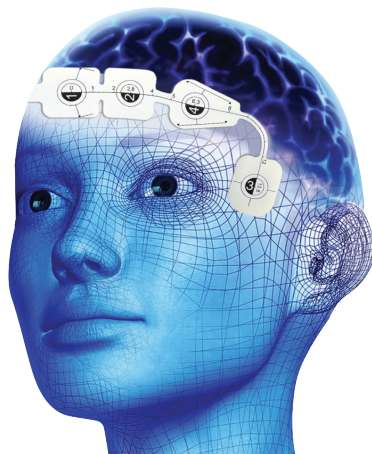
**Part Number: 4610030**  
**REF: B-BIS-4A / 9902040904**



**Part Number: 4610031**  
**REF: B-BIS-4P / 9902040502**



**Part Number: 4610033**  
**REF: 9902060902**



**Part Number: 4610032**  
**REF: 9903030901**



**Part Number: 4610034**  
**REF: B-BIS-3A-04**

Disposable, single-use EEG sensors are specifically designed for anesthesiologists and medical professionals to monitor and assess the depth of anaesthesia in patients using the Bispectral Index™ (BIS) derived from the EEG signals. This provides real-time information about the patient's consciousness and electrical brain activity during surgical procedures.

The range also include Entropy sensors for use with GE Entropy Module which measures these changes by quantifying the irregularity of EEG and FEMG signals.



# Disposable EEG Sensors

Viamed Part Number	Type	Equivalent to Medtronic/Covidien Item No.	For use with Cable Adapters
4610030	Adult REF B-BIS-4A / 9902040904 Box of 10	186-0106	4610050
4610031	Paediatric REF B-BIS-4P / 9902040502 Box of 10	186-0200	4610050
4610032	Entropy REF 9903030901 Box of 10	M1174414 / Entropy EasyFit Sensor	4610052
4610033	Bilateral Adult REF 9902060902 Box of 10	186-0212	4610051
4610034	IOC (Index of Consciousness) REF B-BIS-3A-04 Box of 25	M1038681 / Entropy Easy Fit Sensor	4610034

**\* B-BIS-4A and B-BIS-4P tested to be compatible with the following:**

GE Healthcare/Datex Ohmeda S/5 Monitors  
 GE Healthcare/Datex Ohmeda FM Series Monitors  
 GE Healthcare/Datex Ohmeda Carescape Series Monitors  
 Philips Intellivue MP Series Patient Monitor Philips Intellivue MX Series Patient Monitor  
 Philips M1204A V24C Patient Monitor  
 Philips M1205A V26C Patient Monitor  
 BIS™ Module applied for Philips IntelliVue Device  
 Medicinos Gija TEMP SignScope 15 Multi-parameter Monitor  
 Medicinos Gija ECG SignScope 12 Multi-parameter Monitor  
 Comen C Series Multi-parameter ECG Monitor  
 Comen Oxy-CRG Multi-parameter Monitor C Series  
 Innomed Multi-parameter ECG Monitor InnoCare-T12 Plus  
 Innomed ECG Multi-parameter Monitor InnoCare T-17 Plus  
 BLT Biolight Multi-parameter RESP Monitor Q5  
 BLT Biolight Multi-parameter TEMP Monitor A5  
 BPL Medical Technologies Multi-parameter ECG Monitor EV15  
 Nihon Kohden ECG Multi-parameter Monitor Life Scope TR  
 Nihon Kohden BSM Series Bedside Monitor  
 Advanced Instrumentations Multi-parameter ECG Monitor PM-2000M  
 Sinohero Multi-parameter ECG Monitor AcuitSign M3  
 Olidef Multi-parameter ECG Monitor LOGICARE  
 Mennen Medical Menntor X7 Modular Patient Monitor  
 Dixtal DX-2020 Patient Monitor  
 Datascope Spectrum OR Monitor  
 Dräger Infinity Acute Care System Monitoring Solution Perseus A500 Anaesthesia Machine  
 Dräger Infinity Delta (SC 7000)  
 Dräger Delta XL (SC 9000 XL)  
 Spacelabs Healthcare Ultraview Multi-parameter Monitor  
 Spacelabs Healthcare Ultraview SL Series Multi-parameter Monitor  
 Mindray DPM6 Patient Monitor  
 Mindray BeneView Series Patient Monitor  
 Medtronic Covidien Bispectral Index™ Monitoring System  
 Medtronic BIS™ Vista Monitoring System  
 Medtronic BIS™ View Monitoring System

**9902060902 (Bilateral) tested to be compatible with the following:**

Medtronic Stand Alone Monitors & OEM Modules with 4 Channel Coverter Box

**9903030901 Entropy is tested to be compatible with the following:**

M1174413 Entropy EasyFit Sensor  
 M1174414 Entropy EasyFit Sensor Start Up Kit

**B-BIS-3A-04 IOC is tested to be compatible with the following:**

Morpheus Medical IOC Monitor

All trademarks and trade names referenced in this material are the property of their respective owners.

Specifications Subject to Change



**Viamed Limited** · 15 Station Road · Cross Hills  
 Keighley · West Yorkshire · BD20 7DT · United Kingdom  
 Tel: +44 (0)1535 634 542 Fax: +44 (0)1535 635 582  
 Email: [info@viamed.co.uk](mailto:info@viamed.co.uk) Website: [www.viamed.co.uk](http://www.viamed.co.uk)