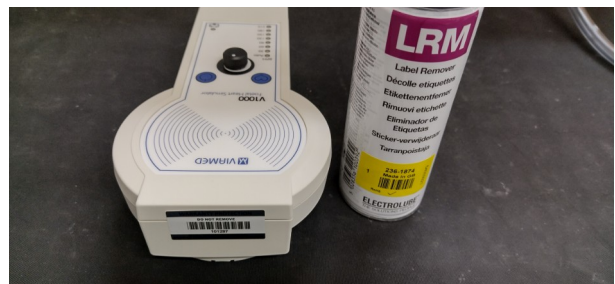


V1000 SERVICE PROCEDURE		VM3COP55.05
Date 17-08-23	Revision date 17-08-23	Issue 1.0

Things needed	Items required	Part number (if applicable)
	PH2 Phillips screwdriver	
	Label remover	0050130
	Transducer interface cushion	1430309
	Calibrated sticker	
	Warranty protection sticker	1430325
	Double sided tape 10mm	
	Tamper evident seal	1430326

Before attempting the service, power up the V1000.
 Do all the LEDs work ?
 Do the ON/OFF and Frequency buttons work ?
 Does the Intensity dial work ? Can you hear the speaker getting louder/Softer ? **quieter?**

Remove warranty protection sticker and clean residue with label remover.



~~Spotless !~~
 Ensure that no traces of the label or residue remain.



[Full stops after every sentence]

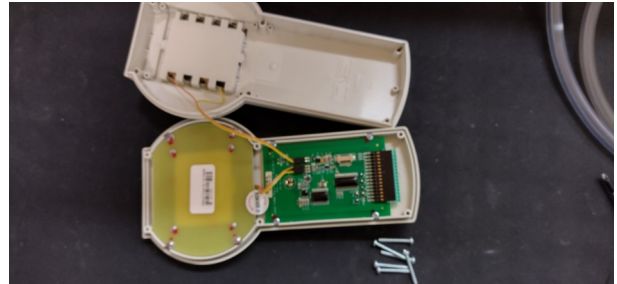
Using the Phillips screwdriver, remove the 6 screws that hold the two halves together.

? six screws

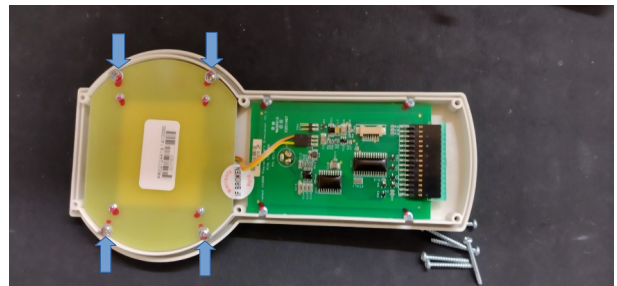
of the instrument case



Split the two halves. Take care, the power lead will be connected between the halves. Make a note of how the two leads are connected.



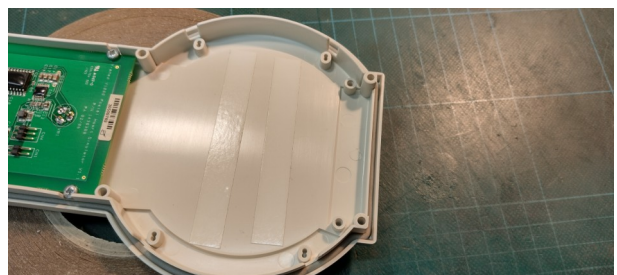
Unplug the power lead and move away the lower half. Remove the four screws that hold the transducer assembly in place. Unplug the transducer lead.



Remove the transducer assembly. Note position of the four M4 nuts used as spacers under the transducer assembly.



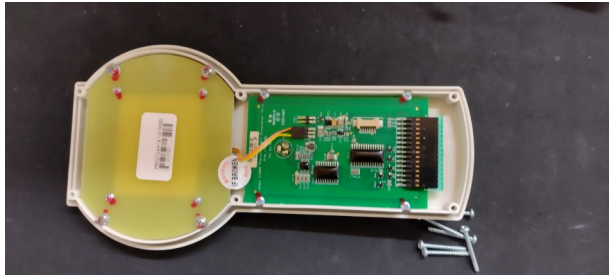
Peel off the old transducer interface cushion. Replace the double sided tape if necessary. Affix a new transducer interface cushion in the space between the support posts.



the

Carefully

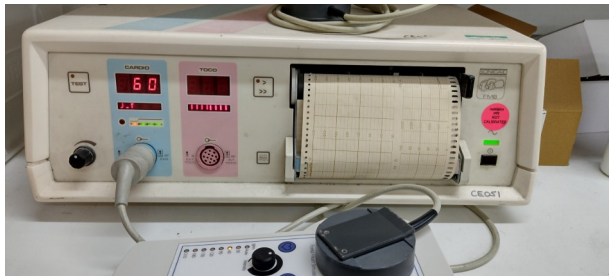
Place the transducer assembly on the four M4 nut spacers and hold in place with the four screws and washers ~~carefully~~. The four screw will need a new dab of red tamper evident seal on the heads.



Reconnect the two leads as noted before. Close the two halves taking care not to trap any wires. Do not fit the six case screws yet.



Use the Sonicaid CE051 to confirm the V1000 is working and has a good output. With the V1000 set at half intensity the Sonicaid should find a good pulse from 60 to 210 bpm (30 is too low for the Sonicaid to function). With the Sonicaid set at half volume you should hear the pulse clearly from it's speaker. Use the ~~auto~~ on the V1000 to run through the range ~~while you watch~~ the Sonicaid.

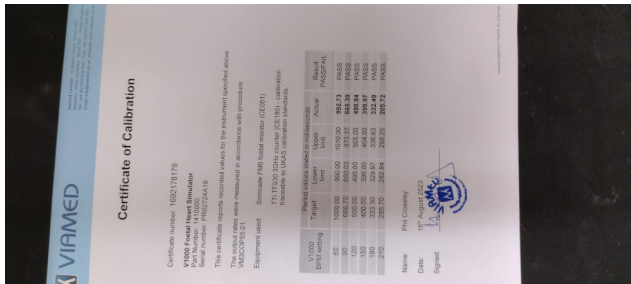


AUTO BPM function whilst observing

Calibration Check

Follow Foetal heart simulator BPM accuracy test **VM3COP55.01** [standardize font & font size]

VM3COP55.01 produces a calibration certificate as shown. It should be signed and stamped on the signature with a Viamed stamp. A digital copy is saved in [Z:\V1000](#) calibration certificates\PDF\ A digital copy is also uploaded to Intrastats\ Stock\Calibration Certificates\. Each calibration certificate number generated here requires the certificate to be uploaded later.



Now put the six screws back in the body.
Then give the unit a final quick check just to make sure it still turns On/Off.
Give the unit a good clean with isopropyl alcohol.

Replace the six screws into the instrument case.
Check that the device turns on/off.
Clean the unit thoroughly with isopropyl alcohol.

[Dont we use branded disinfectant wipes?]

Affix a new Calibrated sticker as shown.

Ensure that this is initialed with today's date.

Affix a new Warranty Protection sticker as shown. Make a note of its unique number.
The number is recorded on the QA form that is found on the SRN page for a customers device.
It is also found through Intrastats\Stock\QA Stock\ for a new build

