

VM3COP54.50 VM2160 Firmware Flashing

This procedure applies to all TFT versions of the VM2160.

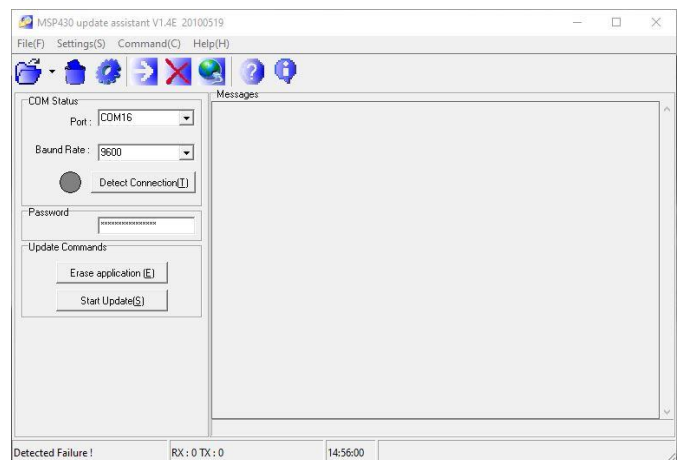
The SMARTSat versions can only be converted to alternative SMARTSat versions.

The ChipOx versions can only be converted to alternative ChipOx versions.

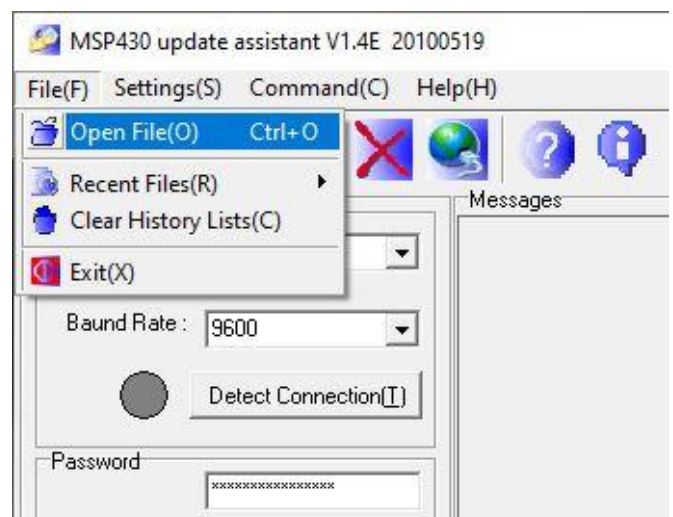
- 1) Using the centre button on the keypad, power up the VM2160 pulse oximeter.
- 2) The version of firmware is briefly displayed. In the example shown this is SCE-V6.3.



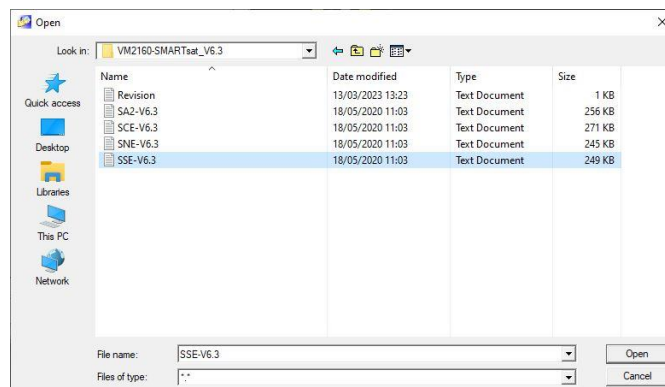
- 3) Load the MSP update assistant on to a PC.



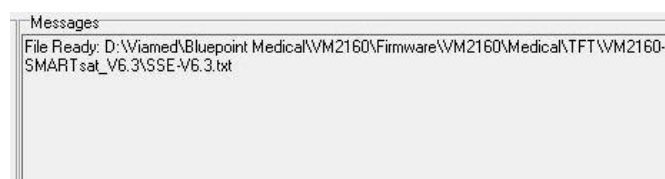
- 4) In the File tab, select Open File.



- 5) Locate and select the relevant firmware version.
- 6) Press the Open button in the lower right corner to load the firmware to the MSP assistant.



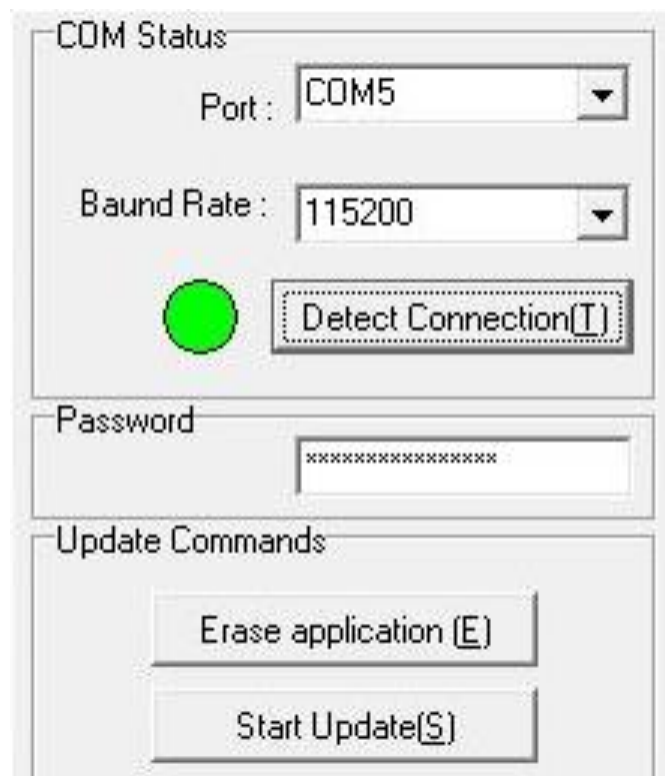
- 7) The firmware is now loaded. The firmware file should display in the messages box of the firmware assistant.



- 8) Locate the USB port on the VM2160. This is located on the upper right side of the unit, under a rubber cover.
- 9) Using a USB A to USB Micro cable, connect the VM2160 to the PC.

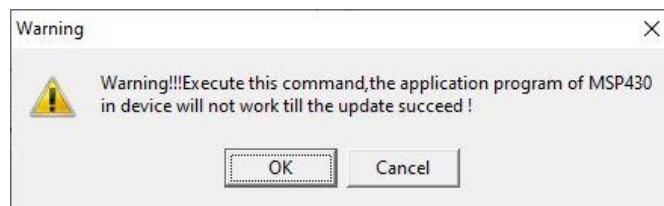


- 10) The Detect Connection indicator should now show as green. If not, press the Detect Connection button. Do not proceed further until the indicator is green.
- 11) The current firmware must be erased before a new firmware is installed. Before proceeding, double check the desired firmware is loaded.



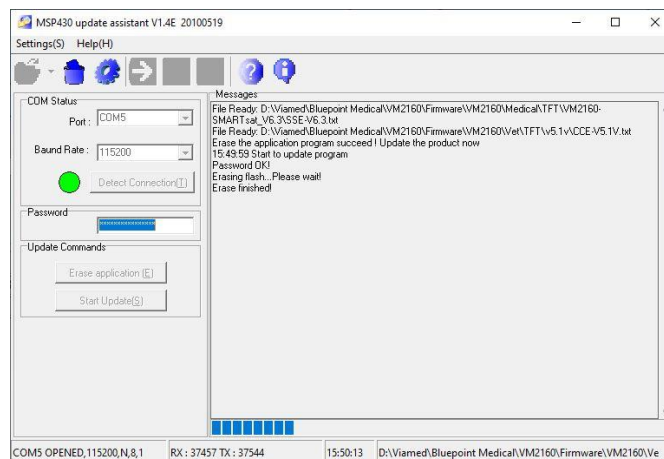
12) Press the Erase application button. A warning message will be displayed.

13) If you are sure the correct firmware is loaded, then press the OK button to proceed.



14) Once the firmware has been erased, press the Start Update button. The firmware will begin to install.

Do not disconnect the unit from the PC until the process has finished.



15) When the new firmware has been installed, disconnect the VM2160 from the USB cable.

16) Power up the unit and observe the version of firmware installed.

17) Each language firmware variant has a different part number. If a new language firmware has been installed, then new labels will need to be applied the packaging.

18) If a new firmware has been installed, then the VM2160 will need to be put through the QA process to ensure the unit operates correctly and that the new firmware version is recorded on the intrastats system.