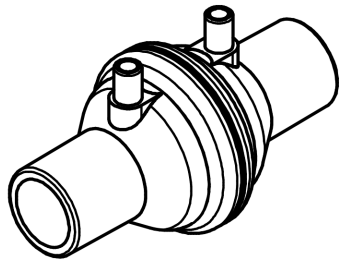
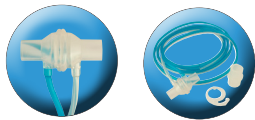


SpiroTrue H



Differential pressure flow sensor for use with Hamilton ventilators

- Compatible to Hamilton Medical **H7400 Accu Tach** flow sensor.
- For use with Hamilton Medical: Aladdin, Amadeus, Arabella, C1, C2, Galileo, H72, VR1, H7200, MR1, Raphael, S1, T1, Veolar...
- SpiroTrue H is a box of six, packaged individually. Each sensor is supplied fitted with 2m dual lumen sensor tubing and also includes an adapter and hook.

Viamed Part Number: 4310003

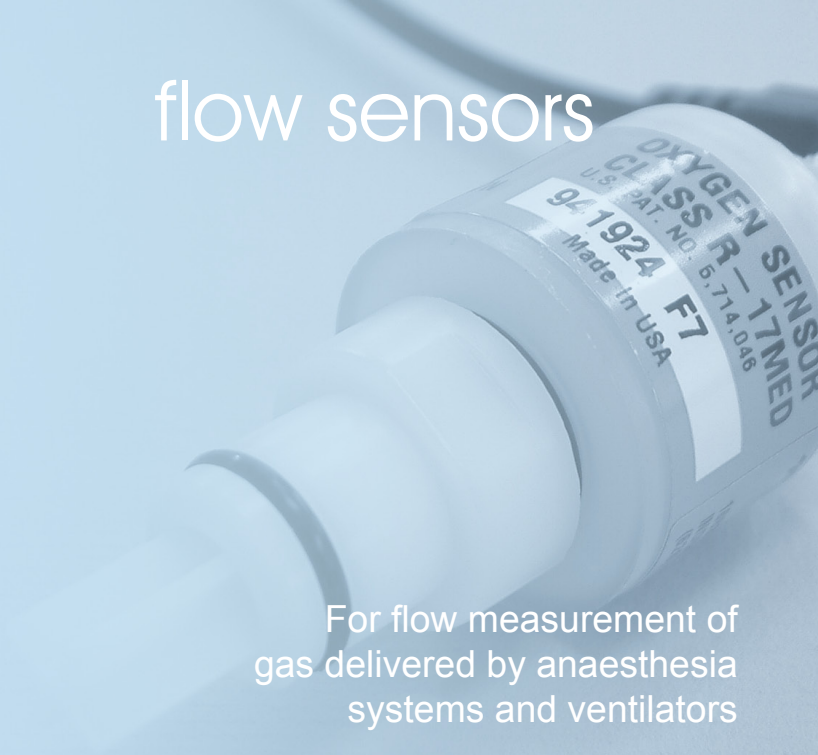


Viamed Limited

15 Station Road
Cross Hills · Keighley
West Yorkshire · BD20 7DT
United Kingdom
Tel: +44 (0)1535 634 542
Fax: +44 (0)1535 635 582
Email: info@viamed.co.uk
Website: www.viamed.co.uk

flow sensors

For flow measurement of
gas delivered by anaesthesia
systems and ventilators



Hot-wire Anemometric Flow Sensors

SpiroTrue A

- Compatible to the Dräger Spirolog flow sensor: Part no. **8403735**.
- For use with Dräger: Anemone, Apollo, AV1, Cato, Cicero, Dura, Eva, Evita, Evita 4, Evita XL, Fabius GS, Julian, PM8030, PM8035, PM8050, PM8060, Primus, Savina, Sulla...
- Can be disinfected.
- Supplied in a box of five, each sensor is packed individually in sterilizable packaging.
- Can be sterilized with EtO prior to use. The sensor can be used as long as equipment calibration is possible.

Viamed Part Number: 4310001



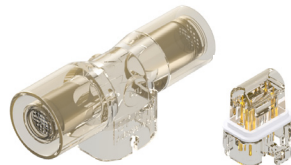
SpiroTrue A (PC)

- As above and autoclavable at 134°C*, ≥ 100 cycles
- Compatible to the Dräger SpiroLife flow sensor: Part no. **MK 01900**.

Viamed Part Number: 4310002

ST-BLR

Reusable
Neonatal



- Compatible to the Dräger neonatal flow sensor ISO 15: Part no. **8411130**.
- For use with Dräger neonatal ventilators.
- Can be disinfected.
- Supplied singularly and is packed in sterilizable packaging.
- Can be sterilized with EtO prior to use.

ST-BLR Reusable Viamed Part Number: 4310004

Inserts also supplied in boxes of 5, Viamed Part Number: 4310005

ST-BL

Disposable Neonatal

- As above but disposable with fixed insert



ST-BL Disposable Viamed Part Number: 4310006