

# **MODURA<sup>TM</sup> Rail systems**

The original medical wall rail system

***Rail System solutions for  
the ITU, A & E, Recovery,  
HDU, Maternity Units,  
Day Surgery and more....***

## **Anmedic UK Ltd**

**PO Box 114, Hayling Island, Hampshire, PO11 9QN.**

**Tel: 023 9246 3791 Fax: 023 9235 0731**

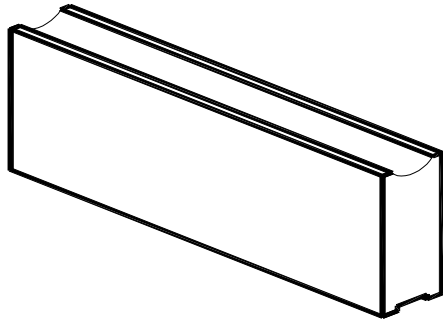
**email: [sales.uk@anmedic.co.uk](mailto:sales.uk@anmedic.co.uk) website: [www.anmedic.co.uk](http://www.anmedic.co.uk)**

**Modura Rail Systems are manufactured by:**

**Anmedic AB**

**Galgbacksvagen 6, SE 186 30 Vallentuna, Sweden.**

# Modura<sup>TM</sup> Rail Types



## SOLID RAIL

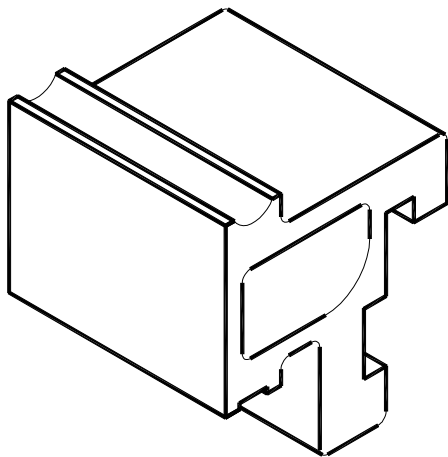
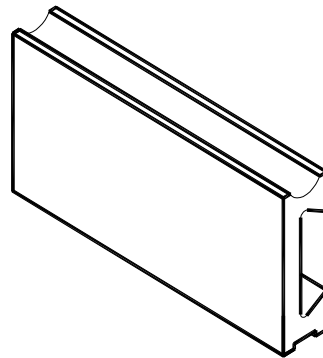
The solid rail was the original modura Rail and the first medical rail to be manufactured. Although still wall-mounted in some hospitals, its symmetrical profile is more suited to situations where attachment on either side is needed-on emergency trolleys, ventilators, Anaesthetic machines and ceiling pendants, for example.

## DOVETAIL RAIL

The Dovetail Rail is best suited for low dependency areas and for handling lightweight equipment. It is wall-mounted with a special mounting set.

Once fixed-at a maximum of 400 mm each mounting set can be adjusted to compensate for differences in wall surfaces, a unique feature and particularly useful in ward upgrade situations.

This rail typically requires 8 mounting sets for each 3-metre length of rail and will support 40 kg between fixing points.



## HEAVY DUTY RAIL

The Heavy Duty Rail is often used in conjunction with the Dovetail, but is designed for high dependency and for mounting monitors and heavier nursing equipment.

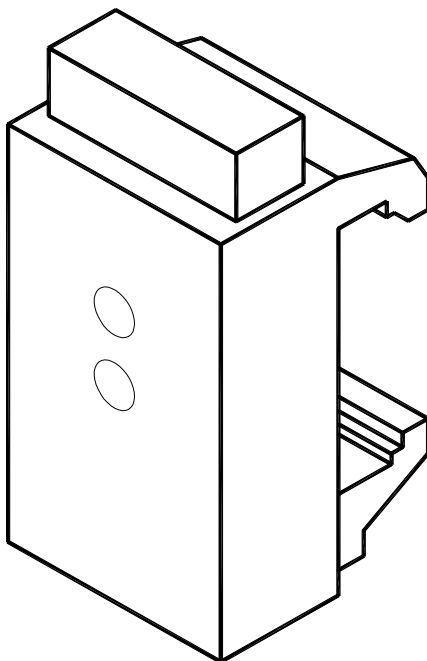
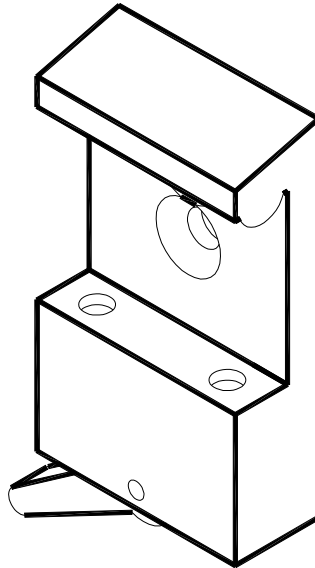
It uses a different mounting set with a rail face adjustment feature unique to Modura and essential for the correct positioning of monitor shelves.

This rail can also span windows or non-supporting areas and is usually fixed at a maximum of 1200 mm centres. A 3-metre length of Heavy Duty Rail typically requires 4 mounting sets and can support 100 kg between fixing points.

# Modura<sup>TM</sup> Claw Types

## MODURA CLAW

The Modura Claw is designed for use on the Modura rail and is a robust aluminium claw with a single lever action



## UNI-CLAW

The Uni-claw is a lightweight yet strong claw with a unique profile designed to fit all rail systems. Its spring loaded action ensures accessories are rail-mounted and removed with ease.

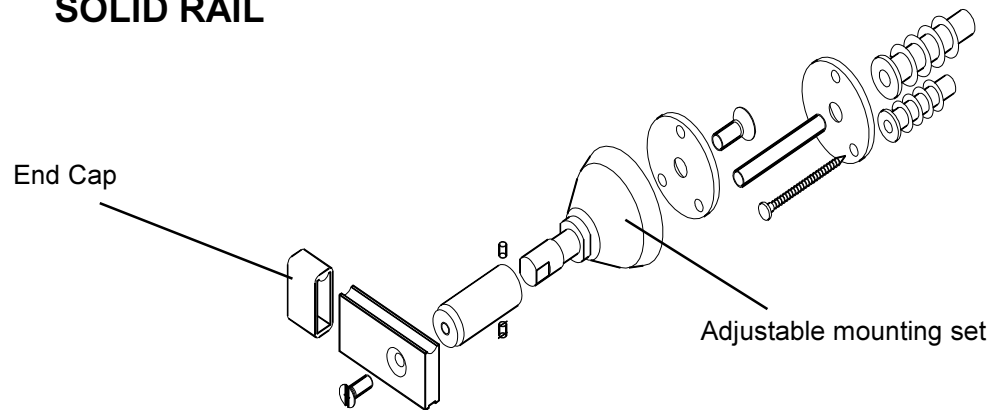
## Installation of Modura Rail

<b>Dovetail Rail</b>	
Dovetail rail is for light loads only and is fixed at a maximum of 400 mm distance between mounts	
Metres of rail	Number of Mounting sets
1	3
2	5
3	8
4	10
5	13
6	15
7	18
8	20
9	23
10	25
Dovetail rail can support a maximum of 40 Kg between two fixing points.	

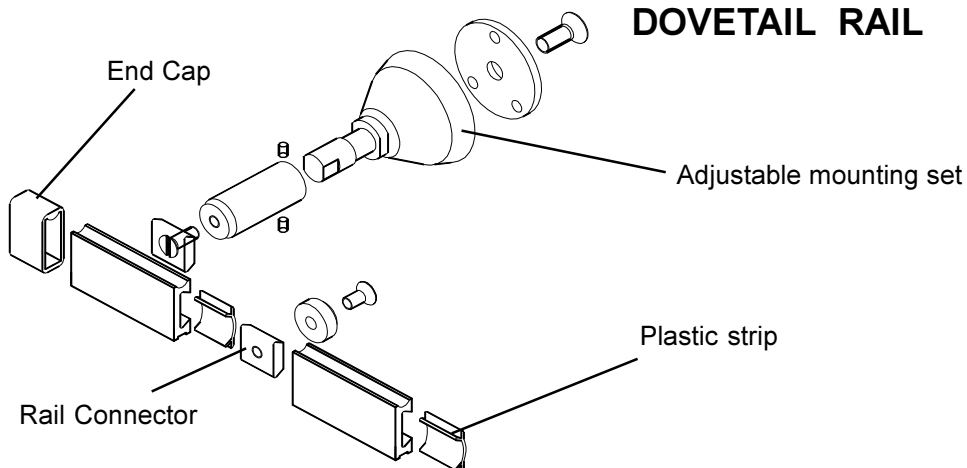
<b>Heavy Duty Rail</b>	
Modura Heavy Duty rail is fixed at a maximum of 1200 mm distance between mounts.	
Metres of rail	Number of Mounting sets
1	2
2	3
3	4
4	4
5	5
6	6
7	6
8	7
9	8
10	9
Narrow Heavy duty mounting sets are not recommended for Plaster board Stud walling. Use Wide Heavy duty only.	

## Mounting Sets & Fittings

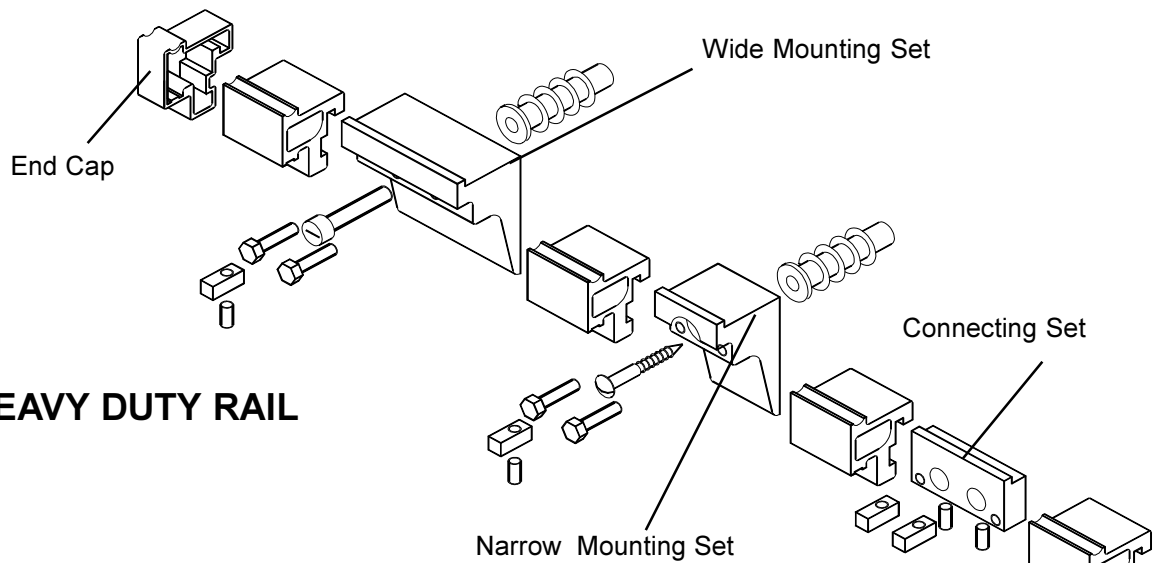
### SOLID RAIL



### DOVETAIL RAIL



### HEAVY DUTY RAIL





*Rail System solutions for  
the ITU, A & E, Recovery  
HDU, Maternity Units  
Day Surgery and more.....*

## **Modura Ordering Information**

### **Rails**

Solid Rail	3. m	(10 pcs.)	SW75511-6
Dovetail Rail	1.5 m	(10 pcs.)	SW75507-4
Heavy Duty Rail	3.m	(4 pcs)	SW75527-2

### **Mounting Sets**

Mounting set for Solid Rail	(pack of 1)	SW75510-8
Endcaps	(pack of 2)	SW75504-1
Mounting Set for Dovetail Rail	(pack of 1)	SW75510-8
Plastic Grey Strip for Dovetail Rail	(15 metres)	SW75509-0
Rail Connection piece	(pack of 1)	SW75501-7
Wide Mounting Bracket, heavy Duty rail	(6 pcs)	SW85806-8
Narrow mounting Bracket heavy duty rail	(6pcs)	SW85807-6
Endcaps heavy duty rail	(pack of 2)	SW75543-9
Rail conector heavy duty rail	(pack of 1)	SW75530-6

### **Modura Claws**

Modura Claw without holes	(pack of 1)	SW75600-7
Modura claw	(pack of 1)	SW75522-3
Modura Guide collbottle	(pack of 1)	SW75523-1
Modura Claw guide for T bracket	(pack of 1)	SW75524-9
Modura Claw with Vee bracket	(pack of 1)	8765-831
Uni-Claw	(pack of 10)	SW85790-4
Uni-Claw with Guide	(pack of 1)	SW85820-9
Uni-Claw with Vee bracket	(pack of 1)	8765-821

**Please see separate literature for full range of  
Modura accessories**

**For further information on the Modura systems and any other Anmedic product  
contact Anmedic UK, PO Box 114, Hayling Island, Hampshire, PO11 9QN.**

**Tel: 023 9246 3791 - Fax: 023 9235 0731**

**email: [sales.uk@anmedic.co.uk](mailto:sales.uk@anmedic.co.uk)**

Modura is a registered trade mark of Anmedic AB, Sweden.