



S-Case

Portable point of care diagnostics accessible to everybody

PROBLEM

Noncommunicable diseases (NCDs) kill **41 million** people each year, equivalent to **71%** of **all deaths globally**.

Over **85%** of these "premature" deaths occur in **low- and middle-income** countries.



Half the world lacks access to essential health services



7 million health workers global shortage



75% live in rural areas in developing countries

Our solution

S-Case medical point-of-care device



GLUCOMETER



BLOOD PRESSURE MONITOR



PULSEOXIMETER



IR & CONTACT THERMOMETER



FINGERPRINT SENSOR



DIGITAL PATIENT DATABASE



HEALTH DATA ANALYTICS

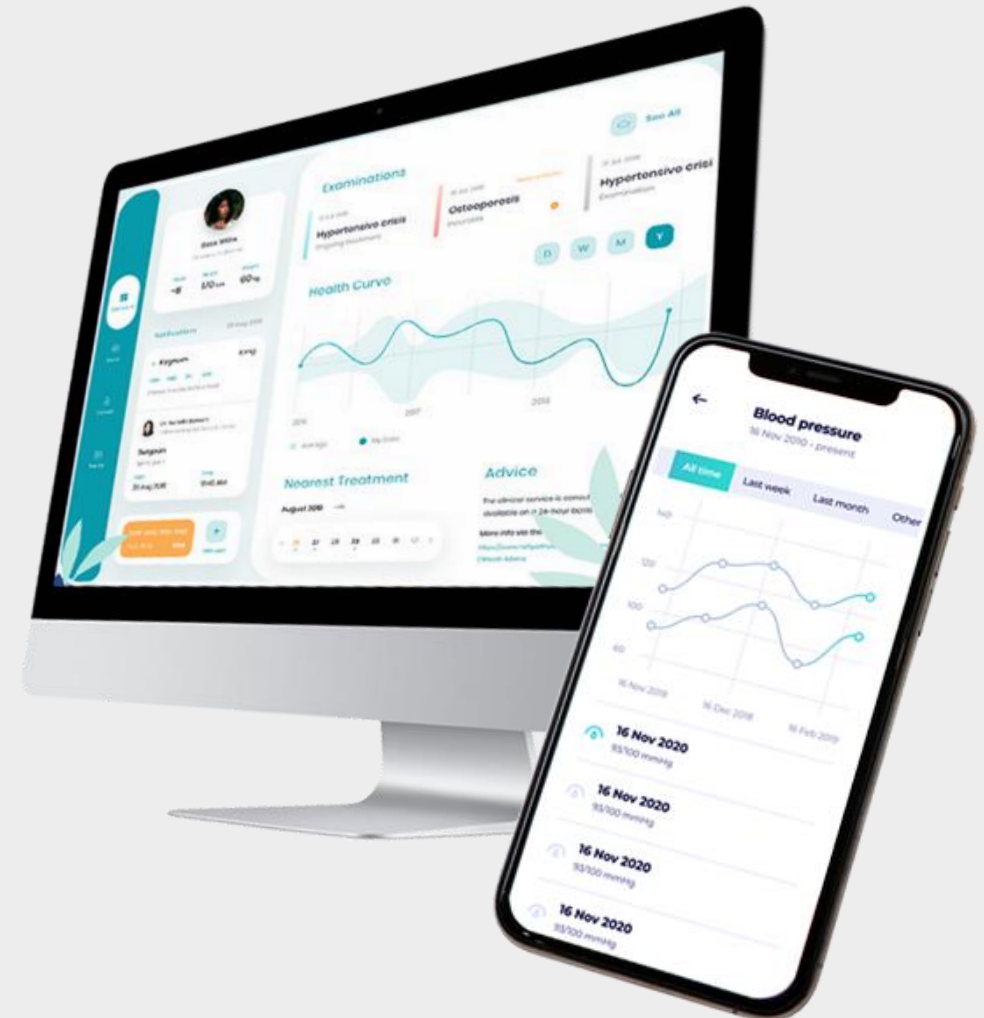


GSM, WIFI & GPS



S-Case

S-Case Software Platform



REMOTE TELEMONTITORING OF PATIENTS



SERVER





SERVER



S-Case



DOCTOR



IDEAL FOR



Home Patient Monitoring (telemedicine)
Maternal Health monitoring
CHWs door to door visits



Care for seniors at home, in hospices &
in retirement homes
Nursing home



Doctors, Clinical officers and Doctors
beyond borders

S-Case

One Device - Multiple customer groups & use cases



Austria – Nursing homes

S-Case



The Social Services Home/Center/Stationary

S-Case



HOME PATIENT MONITORING AFTER 1 DAY SURGERY

*WOMAN AFTER THYROID LOBECTOMY

S-Case



HOME PATIENT MONITORING

S-Case



MOBILE ELDERLY MONITORING UNITES

S-Case



PRIVATE CLINICS IN KENYA

S-Case



COMMUNITY HEALTH WORKERS IN RWANDA

S-Case



PUBLIC HEALTHCARE POINTS IN KENYA

S-Case



PRIVATE CLINICS IN KENYA

S-Case



Oncology clinics (Clinical Oncologists)

S-Case



Outreach programs (health monitoring of homeless people)

S-Case



TEAM



Martin Pekarčík
CEO

-Medicine at Comenius University

-Part of startup Virtual medicine being used in 140+ countries

-Licensed emergency trainer for mountain climbers



Adriana Furdova
CMO

-**Resident doctor** in Cardiac Surgery

-Developed **global clinic rating algorithm** for MedTech start up

-Worked as a Medical Doctor in **South Sudan, Kenya**



Slavomír Hruška
COO

-Entrepreneur and former Venture capital **investor** with the Fund of innovation and technologies

-**Exit** of a tech B2B platform as CEO



František Kudlačák
CTO

-PhD. Candidate at faculty of informatics and information technologies

-Leader of Stuba Green team formula **leading 40+ developers**

- Developed algorithm for detecting **future cardiovascular problems**



Ján Forgáč
Product designer

-Product designer at STU in Bratislava

-**Winner of the Czech national design prize** (industrial) with product SENO



Denis Čapkovič
Software developer

-Faculty of Mathematics, Physics and Informatics in Bratislava



ADVISORS



Bpharm. Israel Bimpe

Zipline Global Operations - Health
Systems Integration & Client
Experience

Former Head of National
implementation in **Rwanda**



Vladimir Micieta M.Sc.

Medtronic Country Manager Slovakia
and Health Policy and Market Access
Manager Cluster Central

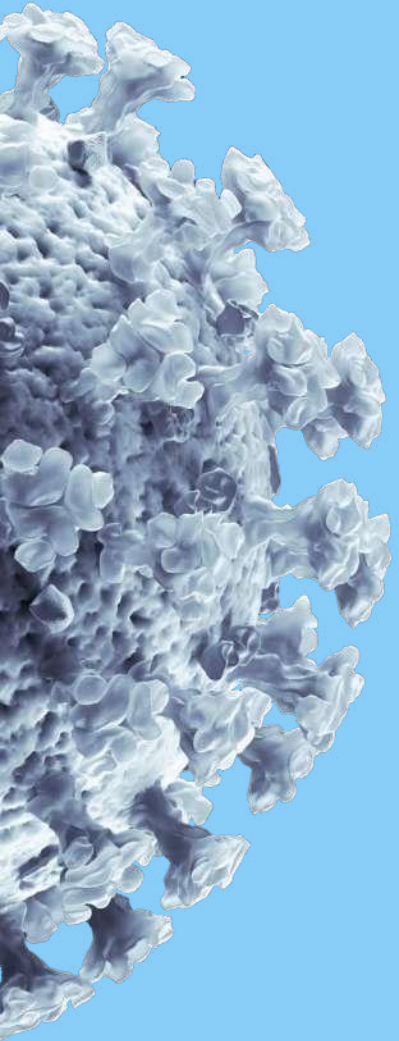
Former **Johnson & Johnson**
Government & Public Affairs Manager



Prof MUDr. Vladimír Krčméry DrSc.

Superintended at the Department of
Microbiology at Medical faculty of Comenius
university

Worked on 70+ medical projects in more than
25 emerging economies across **Africa&Asia**



S-Case

NOWDAY'S PROBLEM WITH COVID19

DOCTORS ARE WORRIED TO SEE
PATIENTS BECAUSE THEY MIGHT GET
INFECTED

PATIENTS ARE WORRIED TO GO TO
DOCTORS BECAUSE THEY MIGHT GET
INFECTED FROM OTHER PATIENTS OR
DOCTORS

OUR SOLUTION

Remote patient monitoring **decreases** the **risk** of contact with **infected patients**.

Allows **remote monitoring** of Covid 19 and other **chronic diseases** without the need to visit a doctor during times of epidemic.

Possible **identification and localization** of **infected** individuals who didn't undergo Covid 19 testing.



GLUCOMETER



BLOOD PRESSURE MONITOR



PULSEOXIMETER



DIGITAL PATIENT DATABASE



THERMOMETER IR&CONTACT



PREDICTIVE ANALYTICS



FINGERPRINT SENSOR



GSM, WIFI & GPS



S-Case