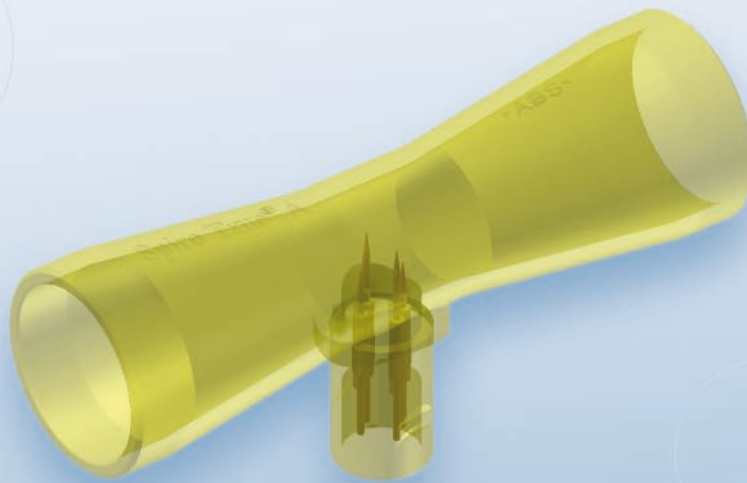


SpiroTrue® A – Flowsensor



Hot-wire flowsensor
for ventilators



» PRODUCTS that care
for you «

*Flowsensor based on hot-wire anemometric principle for
ICU and anaesthesia ventilators.*

SPECIFICATION

- Compatible with Dräger Spirologsensor no. 84 03 735

APPLICATIONS

- Spirolog, Anemone, PM8030, PM8050, PM8060, EVA, Cicero, Cato, Julian, Evita1-4 XL, etc.

NOTE

- SpiroTrue® A Flowsensors are delivered in non-sterile packaging and can be gas sterilised.

For further information, please visit www.bluepoint-medical.com

 Made in Germany

ORDER INFORMATION

- **Order no.:** 1030132006
- **Delivery package:** SpiroTrue® A Flowsensors, 5 pieces per box, individually packed

bluepoint® MEDICAL sales partner

