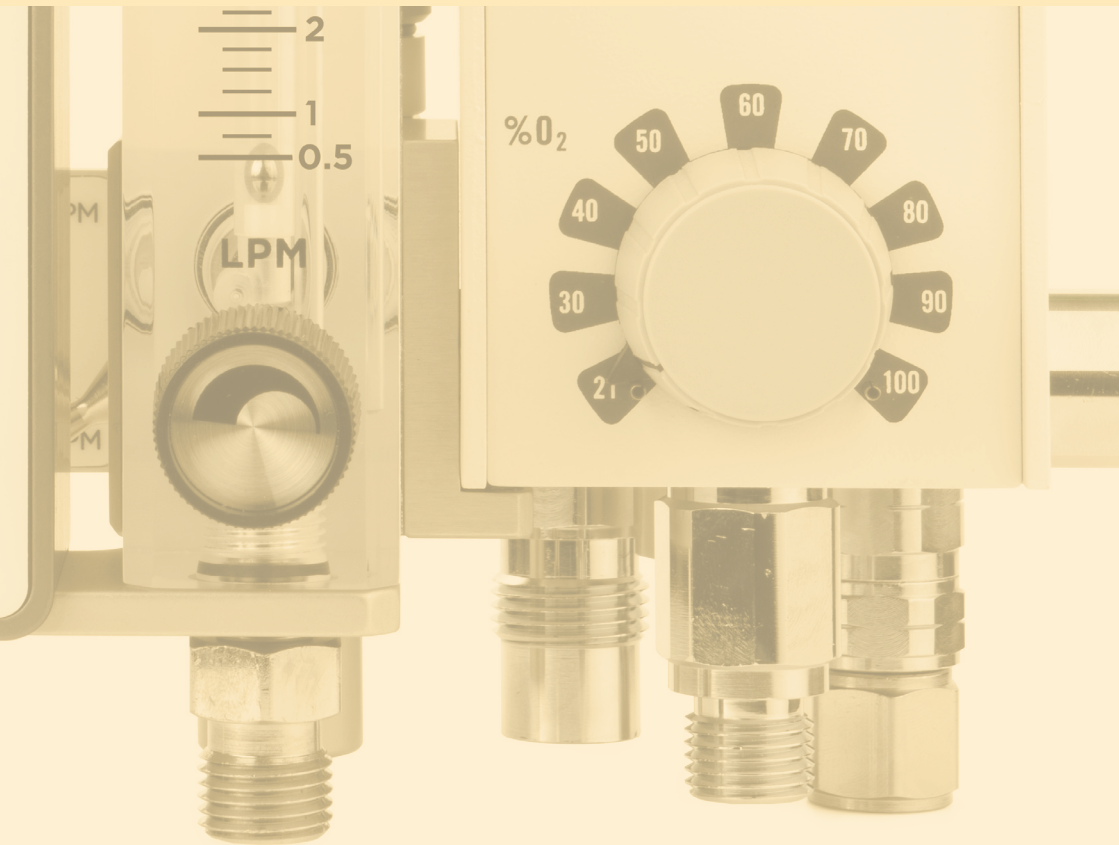
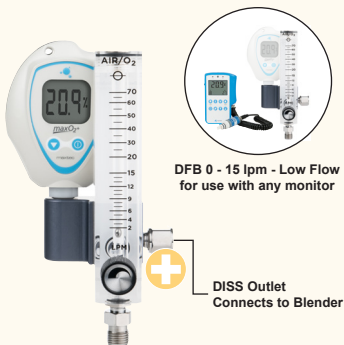


maxtec blender catalogue



VIAMED



DFB 0 - 15 lpm - Low Flow
for use with any monitor

DFB with MaxO2+A -
0 - 15 lpm - Low Flow

Blender Buddy 2

The **Blender Buddy 2** equips your blender with the Maxtec DFB dual-scale flow meter and build-in oxygen, allowing gas to be analysed safely and away from the patient to avoid cross-contamination. Its robust design provides the quality and reliability needed to ensure the ultimate patient care. This product securely attaches to your blender using its DISS outlet connection. The **BlenderBuddy 2** also has a micro bleed, which reduces the amount of waste gas. Add the MaxO2 ME oxygen monitor for applications requiring continuous monitoring.

	Part No.
BlenderBuddy 2 with DFB - 0 - 15 lpm - Low Flow	0310211
BlenderBuddy2 with DFB with MaxO2+A - 0 - 15 lpm - Low Flow	0310216
MAXO2 ME Oxygen Monitor (BlenderBuddy supplied seperately)	0111263

Cost Effective * Works with Existing Blender * No alarms monitoring



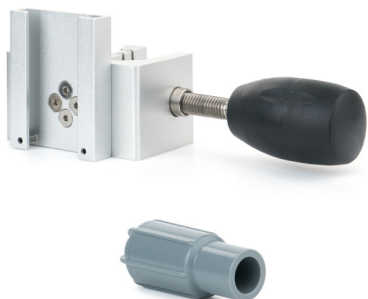
MaxBlend Lite

The **MaxBlend Lite** is designed to provide all of the features of the MaxBlend 2 to customers already using a stand-alone blender. When paired with your existing Bird or Bio-Med Devices blender, the **MaxBlend Lite** provides you with the added features of a built-in O₂ monitor with high and low alarms, and a DFB flow meter. This product securely attaches to your blender using a specific adapter block.

	Part No.
NIST Inlet - 0 - 15 lpm - Low Flow	0310271

* Blender not included

**For use with Existing Bird or Bio-Med Devices Blender
DFB Flow Meter Attached * Built-in monitor with alarms**



Accessories

Add **accessories** to your setup for a better method to flow delivery.

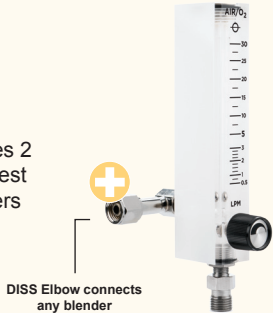
Including:

Hoses with common connector types
Clamps
Adapters

DFB (Designed for Blenders) Flow Meter

The Maxtec “DFB” flow meters are specifically designed to work with blenders. These DFB flow meters are calibrated for the pressure drop that is associated with a blender as flow rates are increased. This is especially important in the world of high flow.

Every Maxtec **DFB flow meter** has a dual-scale, which essentially combines 2 flow ranges into 1 flow meter. The Dual Taper allows accuracy from the lowest visible ranges, to high flows. This eliminates the need for multiple flow meters attached to a blender.



	Part No.
DFB Flowmeter - 0 - 15 lpm - Low Flow	0310246

Cost Effective * Works with Any Blender * Designed specifically for blenders

MaxBlend 2

The low-flow and high-flow **MaxBlend 2** with a built-in monitor allows you to measure oxygen percentage in a clean and dry environment, away from the patient - helping to eliminate cross-contamination. This easy-to-use, low maintenance blender includes a backlit LCD and acrylic DFB flow meter, smart alarms, DC power port, extended battery life and more...



	Part No.
DISS Outlet - 0 - 15 lpm - Low Flow	0310291

Complete Solution * Built-in monitor with alarms * Built-in Blender

	Blender Buddy 2	Blender Buddy 2 with MAXO2+A	MaxBlend Lite	MaxBlend 2
Oxygen Analyser for use with existing or other analysers				
Oxygen Monitor with Smart Alarms for use with existing or other monitors			●	●
Integrated Blender / Mixer				●
Includes DFB Flow Meter	●	●	●	●
Attaches to Existing Blender	●	●	●	
Bleed Control (Gas Savings)			●	●
O ₂ Analyzer Capabilities	●	●	●	●



VIAMED

Viamed Limited · 15 Station Road · Cross Hills
Keighley · West Yorkshire · BD20 7DT · United Kingdom
Tel: +44 (0)1535 634 542 Fax: +44 (0)1535 635 582
Email: info@viamed.co.uk Website: www.viamed.co.uk



Part Number: ???????
Date: 08/18