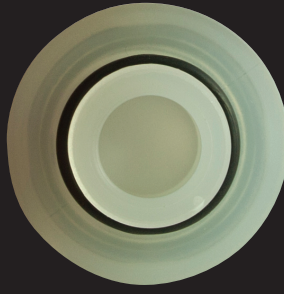
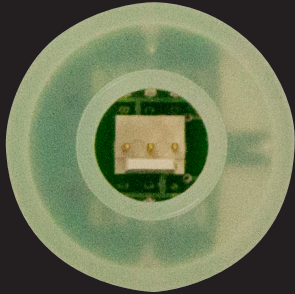




SC-I22D Oxygen Sensor

Leading the industry in
performance and reliability



ISC part number
Output
Output connector
Input
Input O ring
Range
Pressure range
Repeatability
Linearity error

SC-I22D
9 – 13 mV
3 pin Molex
Threaded M16 x 1mm
Yes
0 – 100% oxygen
600 to 2500 mbar
< 1% volume oxygen at constant temperature and pressure
0.1 to 1.0 bar < 3% relative
0.1 to 2.5 bar < 5% relative
(at ppO₂ > 1.0 bar after 10 min equilibration time)
< 30 minutes after sensor installed
< 0.5% oxygen reading in 100% nitrogen @ 25 °C after 36 seconds
< 0.5% vol. O₂ response to 5% CO₂ balance N₂
< 5 s for 90% of final value
0 – 99% R.H. (non-condensing)
- 0.03% relative per % R.H. at 25 °C
< 1% after fall from 1m
0 – 50 °C
-20 to +50 °C
+5 to +15 °C
Integrated NTC network
0 °C to 50 °C, 5% relative error
> 500,000 % oxygen hours
< 1% vol oxygen per month, typically < -15% over sensor lifetime
24 months
≥ 10 K Ohms
No
Yes
Yes
Yes
25 g
No
Gas barrier bag
12 months from date of sales invoice

Warm up time
Zero offset voltage
Cross interference
Response time
Operating humidity
Influence of humidity
Influence of mechanical shock
Operating temperature range
Storage temperature
Recommended storage temperature
Temperature compensation
Temperature compensation error
Nominal sensor life
Long term output drift
Shelf life
Load required
Input - membrane protection grille
Input - hydrophobic membrane
Conformal coating on PCB
Pressure equalization - PCB
Weight (approximate)
Flow diverter
Packaging
Warranty period

All specifications are applicable at standard conditions: 1013 mbar, 25 °C dry ambient air.

Innerspace Systems Corporation 1711 Midway Court, Centralia, WA 98531, USA

Phone: (+001) 360.330.9018 Fax: (+001) 360.330.9019

Email: info@customrebreathers.com Website: www.customrebreathers.com