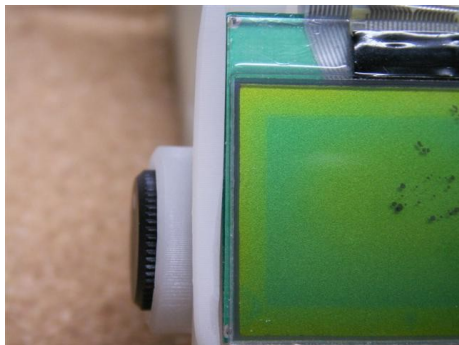


Possible changes to Blu-Ox enclosure



The enclosure needs to be lengthened by another 10mm to allow big hands to hold it. The spare volume inside will be above the jack connector and can be used in subsequent designs.

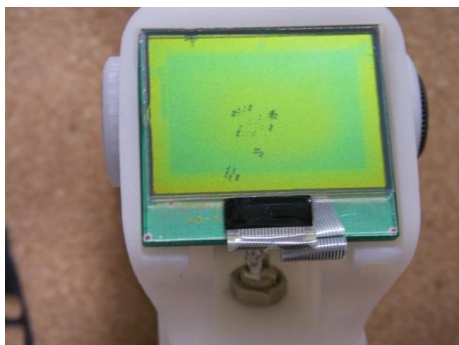


Can the knob and switch be reversed? This will be better for right-handed users.

The knob needs to be recessed a little further. Slight difficulty in using is not a problem. The calibration is fairly steady and we do not want the knob moved accidentally.

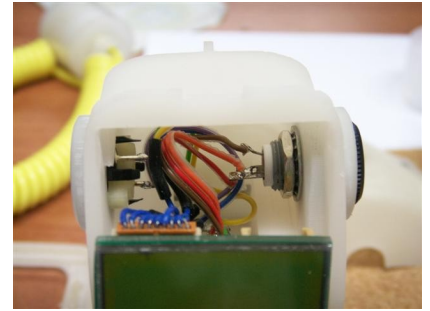
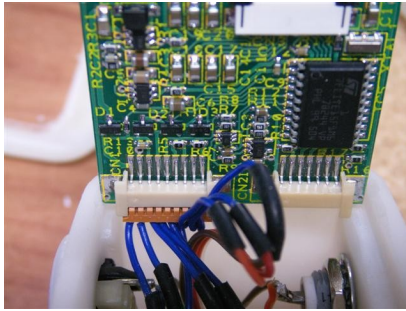
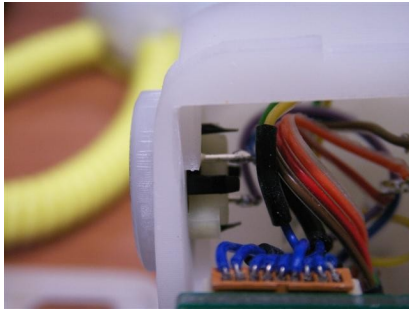


The collar needs to be removed so that the Jack plug can be locked otherwise it will rotate with the sensor



The recess for the LCD and PCB needs to be larger. i.e 38.3 mm x 33.3mm

Possible changes to Blu-Ox enclosure



We need to cut away the body to accommodate the side edges of the two flat connectors. PCB on its way to you today



The bleed hole is not necessary. The pressure can be equalised by unscrewing the base. This procedure is only required by a very small number of divers



Can we have recesses on all for flat surfaces for labels. The front and back we want to have in different languages or different instrument types. Due to the possibility of adding instructions for use; recessing the sides is probably worth doing as well.
Can you advise on type of label and material best used. In the past we have used Polycarbonate or PVC covered paper labels but I would like these labels to look good as they will be on a good looking design

Generally. Small changes are required in several areas to make the joints fit.

J.S.Lamb