

## Quick Start Guide for Model AX300 Portable Oxygen Analyzer and MX300 Portable Oxygen Monitor

The Quick Start Guide describes the steps to successfully start and calibrate the instrument. This guide covers the AX/MX 300 series of analyzers and monitors. Before placing the instrument in service please read the users manual that accompanies the device.

### Components

The AX/MX 300 Portable Oxygen Monitor includes:

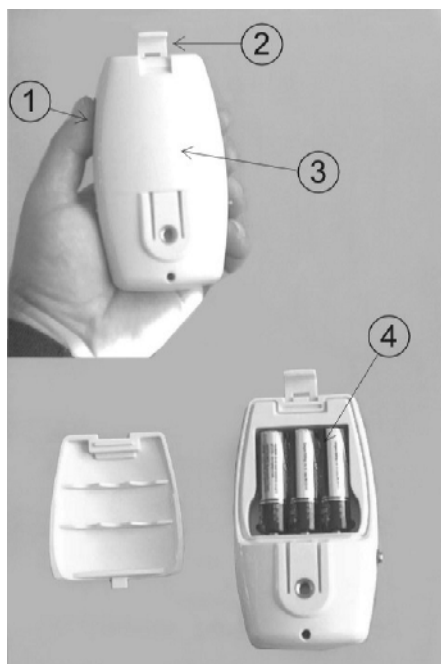
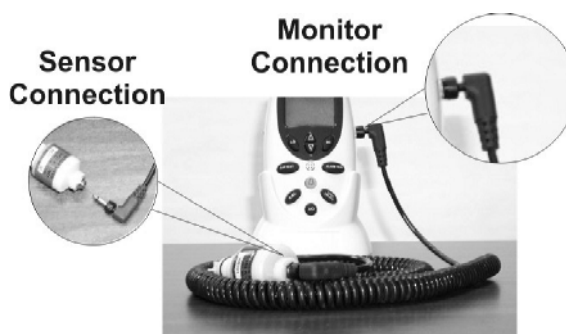
- Sensor & Diverter
- Sensor Cable
- T-Adapter
- V mount Adapter
- AA Batteries
- Instruction Manual



### Set Up

Set up is simple:

1. Connect the coiled sensor cable to the monitor and tighten the capture nut.
2. Connect the other end to the sensor and tighten the capture nut.
3. Install 3 AA alkaline batteries.



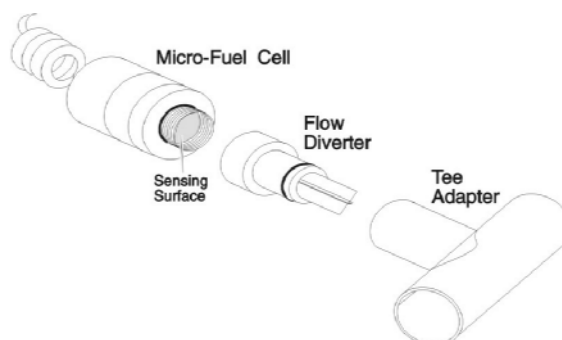
### Battery Installation

1. Hold the instrument face down.
2. Using a coin. Gently twist to open the hinged battery compartment door latch.
3. Lift up door near latch and pull out.
4. Install 3 AA alkaline batteries observing proper polarity.

*Note: Depressing keys while installing batteries may activate an error code. To reset remove and replace battery.*

### Calibration

*Note: The AX300 and MX300 can only be calibrated using 100% oxygen or room air (20.9%). Improper calibration or use of other gas concentrations will activate the  $\sqrt{\text{SENSOR}}$  indicator.*





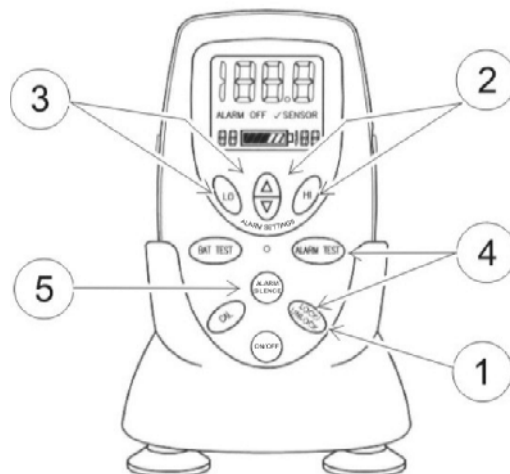
1. After installing batteries the LCD will flash 00.0.
2. Thread flow diverter onto the sensor, insert into the plastic tee as shown above. Connect to a supply of pure dry oxygen flowing at 1-2 liters per minute.
3. After 20 seconds press CAL key. The LCD will count down from 9 to 0. When the calibration is complete the LCD will display the gas value.
4. Press the LOCK/UNLOCK key to save the calibration data. The LCD will stop flashing.
5. Check the batteries by pressing the BAT TEST key. **(MX300 only)**
6. Remove the sensor from the oxygen supply and confirm the LCD reads less than 22% in room air. It is not necessary for it to read exactly 20.9.

## Setting the Alarms (MX300 only)

### HI Alarm

1. Unlock the control keys by pressing the LOCK/UNLOCK key. The display will flash.
2. Press the HI ALARM SET key once. Press the UP and DOWN arrow key until the desired value is displayed in the lower right corner. Press Lock key to save settings or proceed to Low alarm setting below.

**Note:** *The HI and LO alarms may be defeated by setting the HI alarm limit one step above 100%. The display will blink ALARM OFF continually in this mode.*



### LO Alarm:

3. Press the LO ALARM SET key once. (You may have to first unlock the keys using LOCK/UNLOCK). Press the UP and DOWN arrow key to select a value shown in the lower left corner. A built-in safety feature will not allow you to select a LO alarm value less than 18%. Press the Lock key to save settings.

### Testing the Alarms:

4. To test the alarms, unlock the controls by pressing the LOCK/UNLOCK key and then press ALARM TEST key. The LO alarm followed by the HI alarm will blink and the audible visual alarm will activate for about 1 second. Press LOCK key for normal operation.
5. To silence the alarm buzzer for 115 seconds press the alarm silence key.

## Power OFF

To shut off the AX/MX300:

1. Press LOCK/UNLOCK to unlock the keypad.
2. Press I/O to turn the instrument off.