

### COMPANY OPERATING PROCEDURES

#### Nufer Radiant Warmer Test Procedure (0310025) – Wall Mount

VM3/COP/53.03

Date: 24-Jan-03

Revision date: 7-Apr-11

Issue: 4



**Equipment Required:** Rigel 255 safety tester, stapler, tape gun & tape, knife, philips screwdriver, flat blade screwdriver, M4 allen key,



#### **Warning:**

**Rigel 255 safety tester:** A hazard to the user is present when the safety tester is carrying out it's automatic test sequence through exposure to the mains voltage supply.

- Only Skilled / Competent personnel are allowed to use the “Rigel Safety Tester”
- Do not touch or allow any other person to touch the equipment whilst the safety tester is testing.
- Do not leave the safety tester unsupervised whilst carrying out its' automatic test sequence.
- Do not touch the radiant warmer element, reflector or guard bars when hot.

### COMPANY OPERATING PROCEDURES

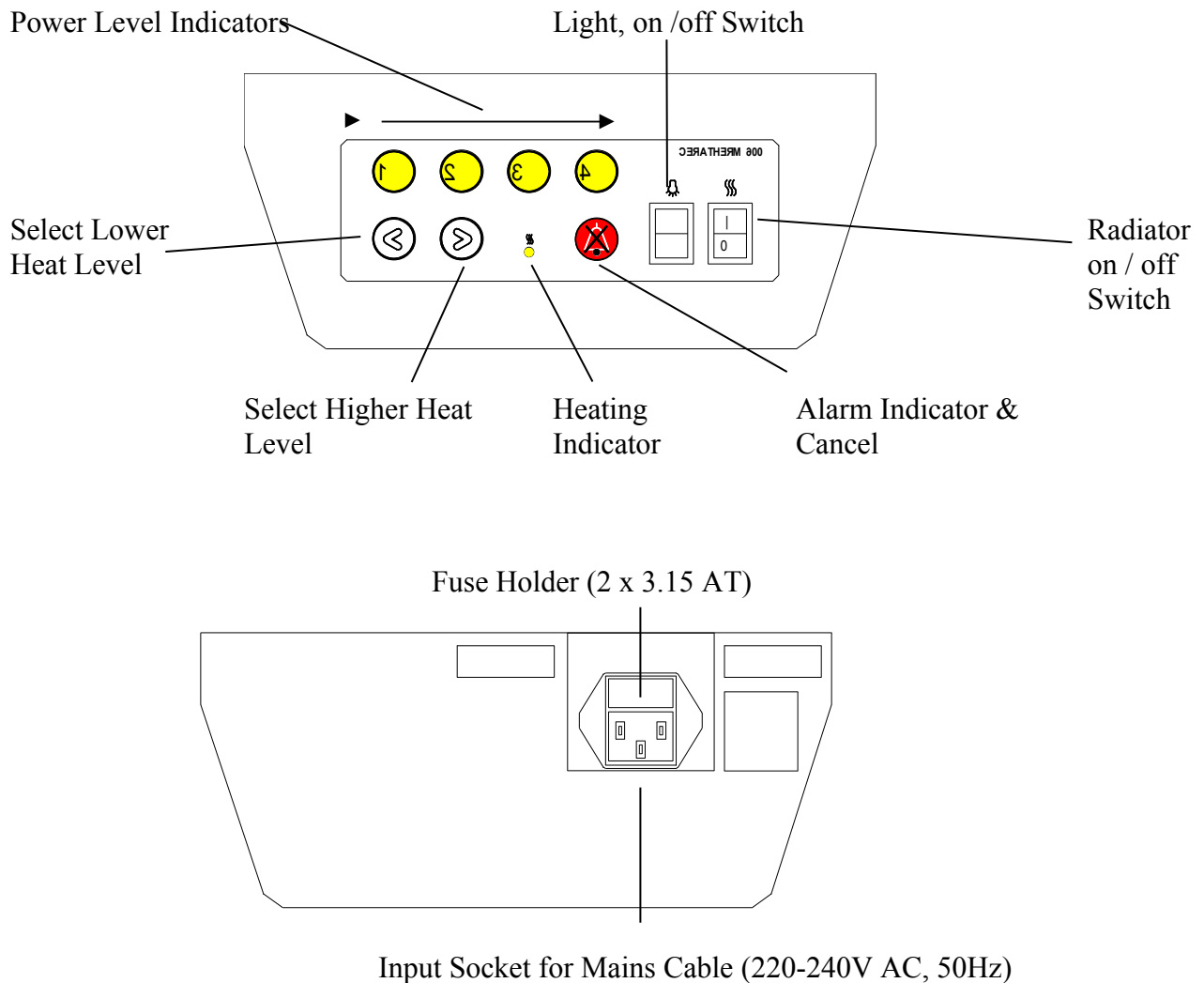
#### Nufer Radiant Warmer Test Procedure (0310025) – Wall Mount

VM3/COP/53.03

Date: 24-Jan-03

Revision date: 7-Apr-11

Issue: 4



#### **Functional & Safety Test Method:**

1. Ensure that all Nufer logos, tapes and markings are removed from the packaging.
2. Unpack the box and ensure that all parts have been delivered in accordance with the contents checklist (VM/COP/53.04). Ensure all parts are free from physical defects. Remove any marks as necessary. Complete the Checklist and photocopy.

### COMPANY OPERATING PROCEDURES

#### Nufer Radiant Warmer Test Procedure (0310025) – Wall Mount

VM3/COP/53.03

Date: 24-Jan-03

Revision date: 7-Apr-11

Issue: 4

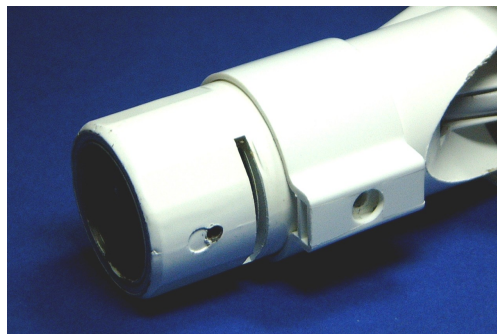
3. Remove and discard the “Nufer Medical” label from the front of the radiant warmer and apply a Viamed label (110mm x 22mm pt no: 0330135) centrally above the control panel.



4. Affix Viamed (220mm x 48mm pt no: 0330130) labels to the Wandarm, one on each side as below.



5. Unscrew the retaining bolt using a cross point screwdriver and remove the blanking plug from the Wandarm using a flat blade screwdriver to depress the plastic retaining tongue.



6. Place the radiant warmer element side down onto workbench.

### COMPANY OPERATING PROCEDURES

#### Nufer Radiant Warmer Test Procedure (0310025) – Wall Mount

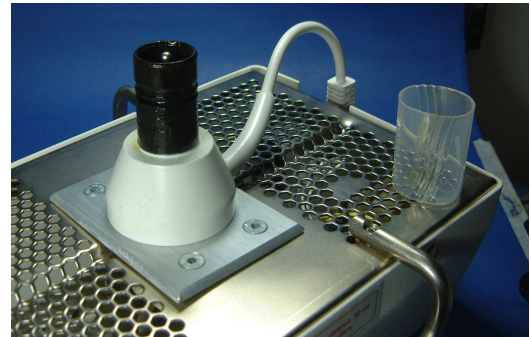
VM3/COP/53.03

Date: 24-Jan-03

Revision date: 7-Apr-11

Issue: 4

7. Attach the radiant warmer  $\Rightarrow$  Wandarm adapter to the radiant warmer. Tighten each of the four bolts using the M4 Allen key. Connect the mains plug from the adapter to the inlet socket of the radiant warmer.



8. Connect & lock the Wandarm to the radiant warmer  $\Rightarrow$  Wandarm adapter and extend the arm.



9. Lift the equipment up and slide the Wandarm pivot onto the wall mount.
10. Connect the mains plug from the Wandarm to the mains outlet. Ensure that both the radiant warmer and halogen light come on when switched on at the control panel. Switch the halogen light off.
11. Press “(<)” & “(>)” to cycle up and down the heat levels.
12. The heating indicator shows when the radiant warmer element is energized (indicator lit) to when it is not (indicator unlit). Ensure that the length of time the heating indicator is lit to when it is not reflects the heat level setting.
13. Select heat level ④.
14. Monitor the radiant warmer and ensure the unit goes into alarm after 15 minutes.
15. When in alarm, ensure that the radiant warmer heat level drops to the safety setting of level ①, the alarm sound and the alarm indicator / cancel flashes.

### COMPANY OPERATING PROCEDURES

#### Nufer Radiant Warmer Test Procedure (0310025) – Wall Mount

VM3/COP/53.03

Date: 24-Jan-03

Revision date: 7-Apr-11

Issue: 4

16. When in alarm, press the alarm indicator / cancel. The heat level should return to level ④, the alarm indicator should stop flashing and the alarm should stop sounding.
17. With the radiant warmer still switched on and hot, disconnect the mains plug from the mains outlet and connect to the 3-pin socket on the Rigel 255 safety tester.
18. Connect the earth return lead to one of the radiant warmer grab rail handles.
19. Ensure the heater passes the safety test.
20. Print & bind current versions of the Radiant Warmer Operators Manual (PN 0391000) and Servicing Manual (PN 0391010).
21. Repackage all parts and place the manuals, one copy of the safety test certificate and one copy of the contents sheet into the box.
22. Secure the box adequately for transport. Lightly tape the second contents sheet to the box lid.
23. Ensure stock sheets are printed, completed & filed.
24. Staple the second Viamed safety certificate to the Nufer safety test certificate and file.

#### **Data Entry into Rigel 255 Safety Tester:**

1. System Test Results: Results correct? : **Press “Y”**.
2. Enter Name or Initials: Press multifunction key 1: **“Enter”**.
3. Press multifunction key 2: **“DATA”**. Press multifunction key 5: **“EQUIP”**.
4. Type the equipment name: **“HEATER XXXXXXXXX”** where XXXXXXXXX is the radiant warmer serial number
5. Unknown equip. No. Add to data stores (Y/N)? : **Press “Y”**.
6. Equipment configuration record:

Type the following entries, following each with keyboard Enter:

Location: **“VIAMED”**

Ward: **“QA”**

Manufacturer: **No entry**

Description: **“INFANT RADIANT WARMER”**,



### COMPANY OPERATING PROCEDURES

#### Nufer Radiant Warmer Test Procedure (0310025) – Wall Mount

VM3/COP/53.03

Date: 24-Jan-03

Revision date: 7-Apr-11

Issue: 4

Serial No.: "XXXXXXXX" where XXXXXXXX is the radiant warmer serial number

Class: "1"

Type: "B"

Applied parts: "0"

Test Interval: "12"

Test mode: "A"

Test name: "XX...XX" where XX...XX is the testers name or initials

Press multifunction key 1: "ENTER".

7. Save data: Press "Y".
8. Press "◀" twice to get to "TEST SELECTION MENU"
9. Press multifunction key 5: "AUTO".
10. In AUTOMATIC TEST MODE, type in the equipment name, "HEATER XXXXXXXX" where XXXXXXXX is the radiant warmer serial number
9. Press multifunction key 1: "ENTER".
10. Press start on the safety tester (◀▶). (To stop the safety test at any point press ⊗. The automatic test sequence will stop after it has completed its current step).
13. After completion of the automatic test sequence, in the Additional Notes box, type "Safety test carried out with wandarm XXXXXXXX", where XXXXXXXX is the wandarm serial number.
11. Press multifunction key 1: "ENTER". Press multifunction key 2: "REMOTE".
12. Ensure the calibration certificate (QC10) is printed and photocopy.
13. Disconnect the safety tester and store the earth return lead.