

VANDAGRAPH COMPANY OPERATING PROCEDURE		
Conversion AD300/MD300 to Mains PSU		
VM3/COP/40.55		
Date: 23 jan- 2009	Revision Date: 17-Jun-11	Issue 1
<u>Only to be attempted by trained personel</u>		

Parts Required

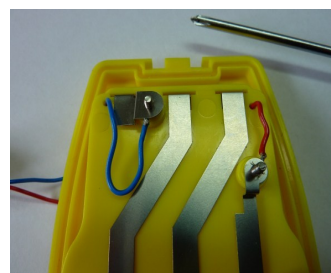
Quantity	Description	Part No.	
1	AD or MD300		
1	Mains PSU Mixcheck		
1	Wire black		
1	21.mm Power connector	9071160	
1	21.mm Rt Angle plug		
1	Silicone	9711025	
2	Heat shrink 1cm long		

Procedure

1. Remove the battery cover
2. Drill a 2mm in the centre of the middle band of battery locators
3. Using increasing diameter drill bits increase the hole size to 10mm
4. Using the tape bit increase the hole size by hand until the socket fits the hole.
5. Fasten the socket into the hole so that the input is near the bottom of the instrument
6. Add glue to the thread and the join between the nut and the case to prevent the socket turning whilst in us.
7. Bend the terminals at right angles to reduce the height if the socket in the enclosure.
8. Remove the back cover holding screws (5 in the battery compartment and one at the top of the instrument)



9. Drill two 2 mm holes one each side if the bottom battery terminals
10. Feed a red wire through the right hole and a Black or Blue wire through the left hole
11. Leave wires approximately 10 cm. long Make small loops in the wire and solder
12. Place the loops between the enclosure and the battery connector Blue to left -ve and Red to right +ve
13. Add the insulator and use screws to hold whilst the case is reassembled
14. Ensure the gasket is in place
15. Check continuity Red wire to +ve terminal and Black/Blue to -ve terminal
16. Use a standard Mixcheck PSU
17. The outer is -ve and the inner is +ve



VANDAGRAPH COMPANY OPERATING PROCEDURE		
Conversion AD300/MD300 to Mains PSU		
VM3/COP/40.55		
Date: 23 jan- 2009	Revision Date: 17-Jun-11	Issue 1
<u>Only to be attempted by trained personel</u>		

18. Cut off the straight connector and add a right angle connector



19. Ensure the cable is soldered on to the connector +ve to centre -ve to outer
20. Use the clamp to clamp cable
21. Pot the connector in Silcone
22. Wire the socket Red to centre Black/Blue to outer and heat-shrink
23. Re-assemble the battery cover
24. Ensure the gasket is in place
25. Check Instrument functions OK
- 26.