

COMPANY OPERATING PROCEDURES

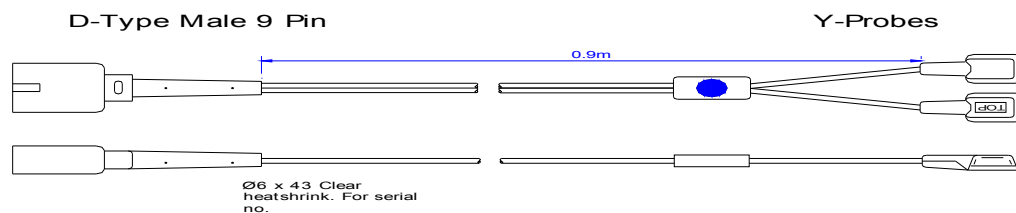
0018562 Nellcor P856YA

VM3/COP/35.03

Date: 14-May-02

Revision date: 7-Apr-11

Issue: 3



Parts list: Kit and parts required.

D-type male 9-pin Pre-manufactured			Y Probe Side Pre-manufactured		
Qty		Part No.	Qty	Description	Part No.
1	Pre- manufactured probes.				0018562

ASSEMBLY OPERATIONS

1. P856YA is a pre-manufactured unit that is not assembled by Viamed.

TESTING

1. Attach D-type male 9-pin side to the test box connector marked 'A'.
2. Check display is showing correct characteristics as shown below. (At correct switch positions)



COMPANY OPERATING PROCEDURES

0018562

Nellcor

P856YA

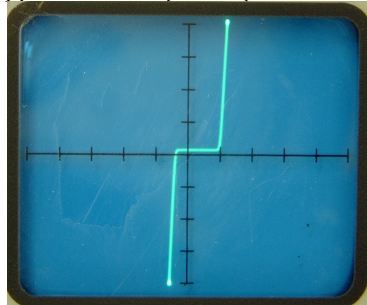
VM3/COP/35.03

Date: 14-May-02

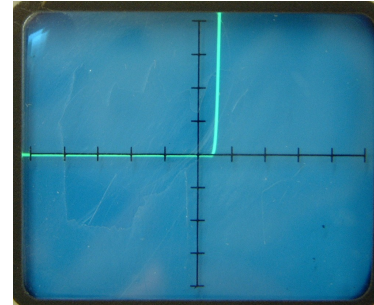
Revision date: 7-Apr-11

Issue: 3

LED should read approx 1.8v → ←



Position 1. IR, LED.

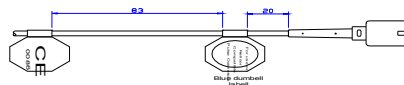


Position 4. Detector

3. If the LED signal is at the bottom then it is wired incorrectly.
4. 'Play' with wire at connections to see if any change in the display (i.e. flickering etc).
5. If there is any movement of signal, the cable must be taken apart and all connections checked and re-soldered. Then tested again until results are satisfactory.
6. Check the cable is of correct quality standard. (See VM/COP/30.11 for details).
7. Attach D-type male 9-pin side to a Nellcor monitor and the probe on to the ear to check SpO₂ level. (Ideal reading 95-100.)

Labelling

1. Labels: to be attached facing upwards as looking at the top of the probe.
 - 1 x CE Label
 - 1 x Square part no. Label on connector bottom face.
 - 1 x Blue Nellcor dumbbell Label.



Quality Assurance (QA)

1. Attach D-type male 9-pin side to the test box connector marked 'A'.
2. Check display is showing correct characteristics as shown below. (At correct switch positions)

LED should read approx 1.8v → ←

COMPANY OPERATING PROCEDURES

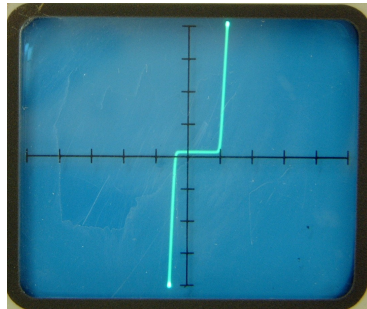
0018562 Nellcor P856YA

VM3/COP/35.03

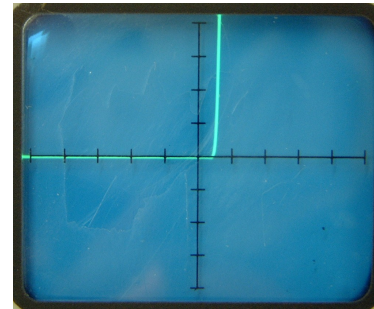
Date: 14-May-02

Revision date: 7-Apr-11

Issue: 3



Position 1. IR, LED.



Position 4. Detector

3. If the LED signal is at the bottom then it is wired incorrectly.
4. 'Play' with wire at connections to see if any change in the display (i.e. flickering etc).
5. If there is any movement of signal, the cable must be taken apart and all connections checked and re-soldered. Then tested again until results are satisfactory.
6. Check the cable is of correct quality standard. (See VM/COP/30.11 for details).
7. Attach D-type male 9-pin side to a Nellcor monitor and the probe on to the ear to check SpO₂ level. (Ideal reading 95-100.)
8. Fill and sign attached paperwork.

Packaging

1. Visually check all labels are attached properly
2. Using a twist tie (bunny clip) wrap the cable and place in a small blue Viamed plastic box, ensuring the cable is inserted in a neat and tidy presentable manor.
3. Place a serial number sticker (supplied with the batch) on the front face of the box.
4. Place a packed and tested sticker (also containing initials of the individual who is packing) on the right hand side top left corner of the box. Do not close box.

Final QA

1. Final inspection. Visually ensure cable sit neatly within the box and is in a presentable state.
2. Boxes are ready to stock in stores.