

### COMPANY OPERATING PROCEDURES

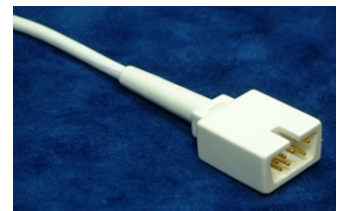
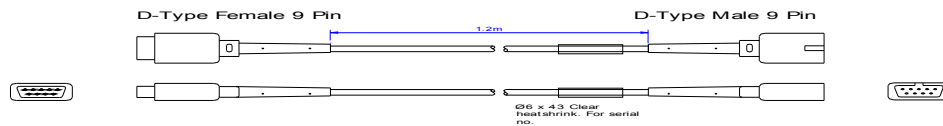
0019713 NONIN P971E3

VM3/COP/33.14

Date: 24-Oct-02

Revision date: 7-Apr-11

Issue: 3



Parts list: Kit and parts required.

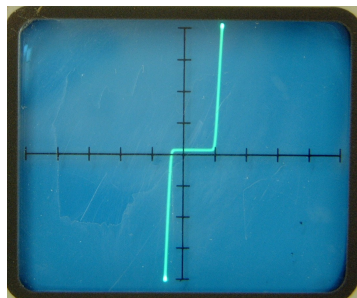
(0019568) 1.2m (4ft) pre-manufactured extension cable.

### ASSEMBLY OPERATIONS

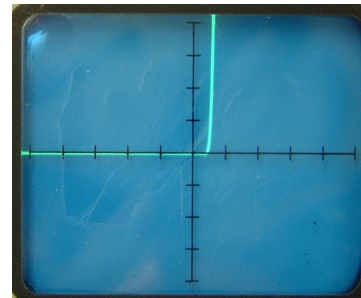
1. This unit is a pre-manufactured unit, which requires no further assembly or modification to either side of the cable.

### TESTING

1. Attach male 9-pin side to the test box connector marked 'A'.
2. Attach female 9-pin side to a Nonin finger probe.
3. Check display is showing correct characteristics as shown below. (At correct switch positions)



NB: Gap to be at bottom of display  
Position 2. IR, LED.



Position 4. Detector

4. If gap is at the top then LED is wired incorrectly.

### COMPANY OPERATING PROCEDURES

0019713 NONIN P971E3

VM3/COP/33.14

Date: 24-Oct-02

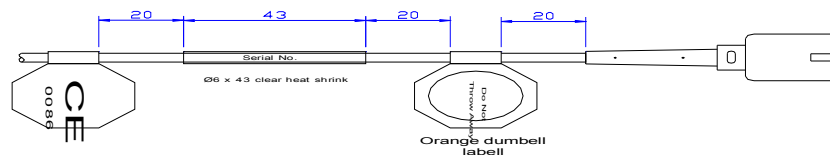
Revision date: 7-Apr-11

Issue: 3

5. 'Play' with wire at connections to see if any change in the display (i.e. flickering etc).
6. If there is any movement of signal, then you must inform the supervisor. Then tested again until results are satisfactory.
7. Check the cable is of correct quality standard. (See VM/COP/30.11 for details).
8. Connect male 9 pin side to the Nonin 8500 portable monitor and attach probe on finger to check SpO<sub>2</sub> level. (Ideal reading 95-100.)

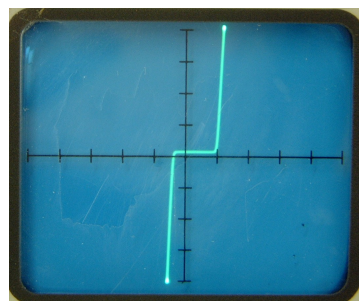
#### Labelling

1. Labels: to be attached facing upwards as looking at the top of the probe.
  - 1 x CE Label
  - 1 x Serial no. Label
  - 1 x Orange dumbbell Label

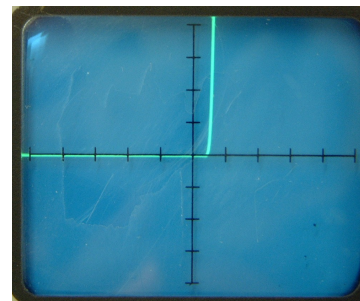


#### Quality Assurance (QA)

1. Attach male 9-pin side to the test box connector marked 'A'.
2. Attach female 9-pin side to a Nonin finger probe.
3. Check display is showing correct characteristics as shown below. (At correct switch positions)



NB: Gap to be at bottom of display  
Position 2. IR, LED.



Position 4. Detector

4. If gap is at the top then LED is wired incorrectly.
5. 'Play' with wire at connections to see if any change in the display (i.e. flickering etc).
6. If there is any movement of signal, then you must inform the supervisor. Then tested again until results are satisfactory.

### COMPANY OPERATING PROCEDURES

0019713 NONIN P971E3

VM3/COP/33.14

Date: 24-Oct-02

Revision date: 7-Apr-11

Issue: 3

7. Check the cable is of correct quality standard. (See VM/COP/30.11 for details).
8. Connect male 9 pin side to the Nonin 8500 portable monitor and attach probe on finger to check SpO<sub>2</sub> level. (Ideal reading 95-100.)
8. Fill and sign attached paperwork.
9. Test 10 % of batch on DL3000 simulator.
10. Log all results on compatibility sheet.

#### Packaging

1. Visually check all labels are attached properly
2. Using a twist tie (bunny clip) wrap the cable and place in a small blue Viamed plastic box, ensuring the cable is inserted in a neat and tidy presentable manor.
3. Place a serial number sticker (supplied with the batch) on the front face of the box.
4. Place a packed and tested sticker (also containing initials of the individual who is packing) on the right hand side top left corner of the box. Do not close box.

#### Final QA

1. Final inspection. Visually ensure cable sit neatly within the box and is in a presentable state.
2. Boxes are ready to stock in stores.