

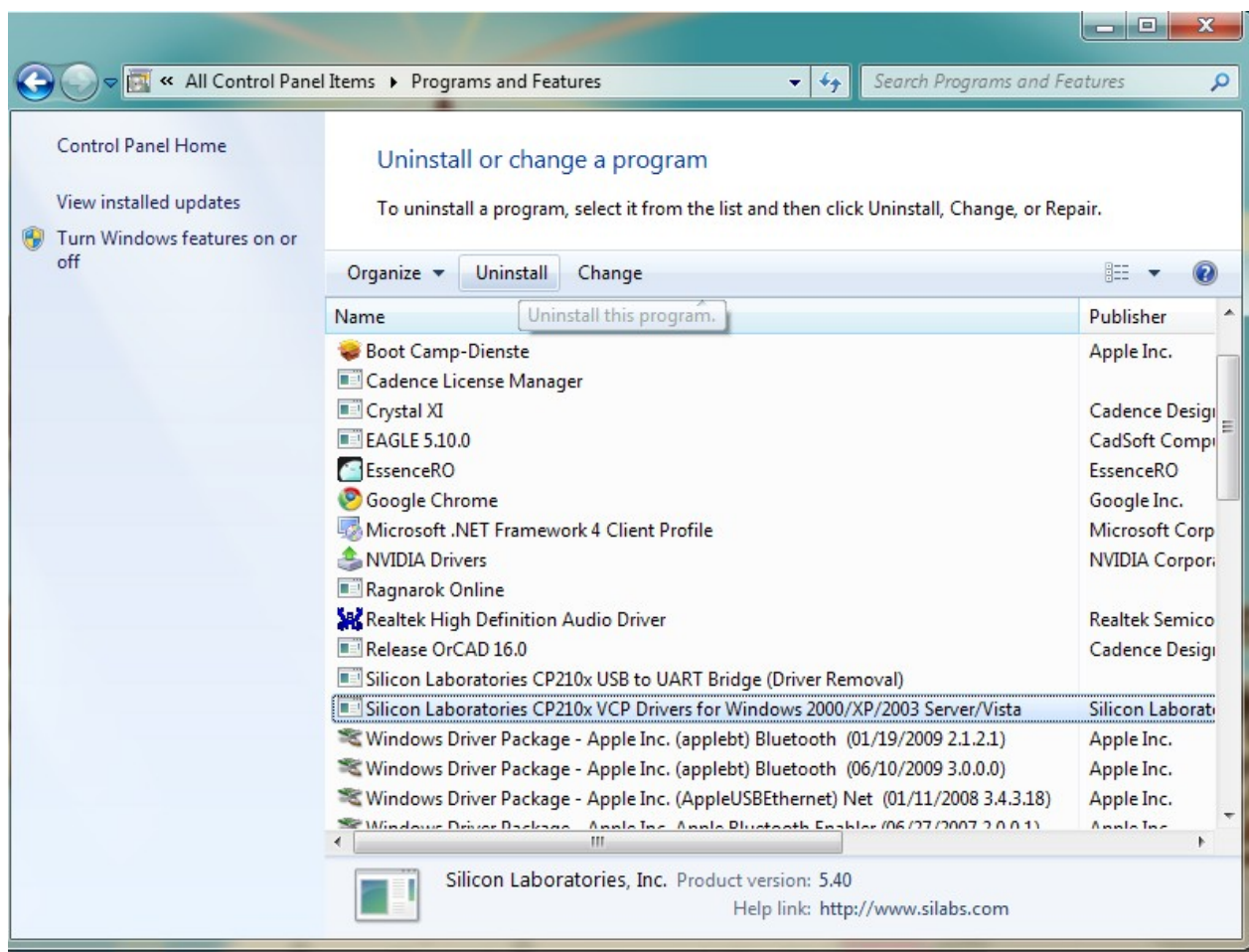
Installation of VM2160 drivers

Remove old driver

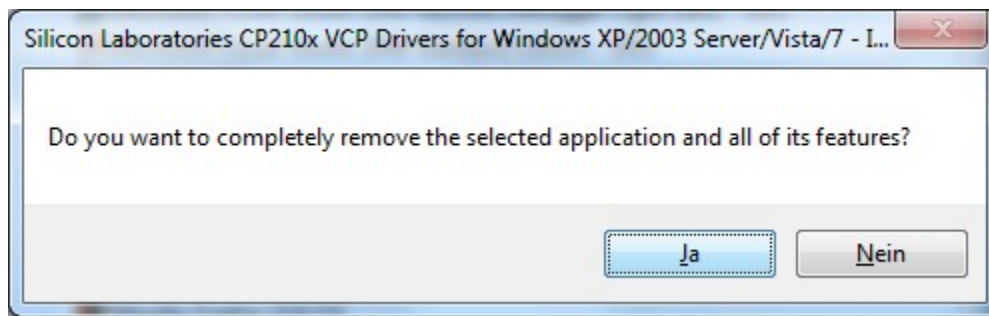
1. Remove CP210x VCP driver

Go to **Start->System Control Panel** and click **uninstall program**

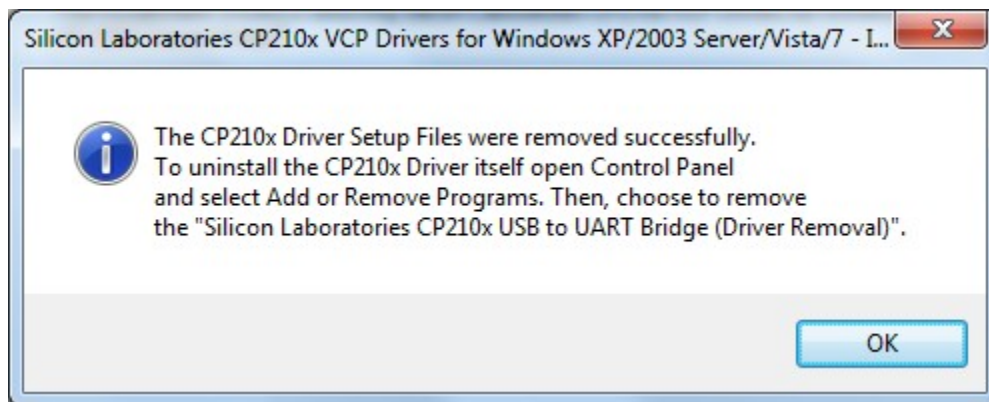
Select **Silicon Laboratories CP210x VCP Drivers for Windows XP/...** in the window **Programs and Features** and start uninstallation.



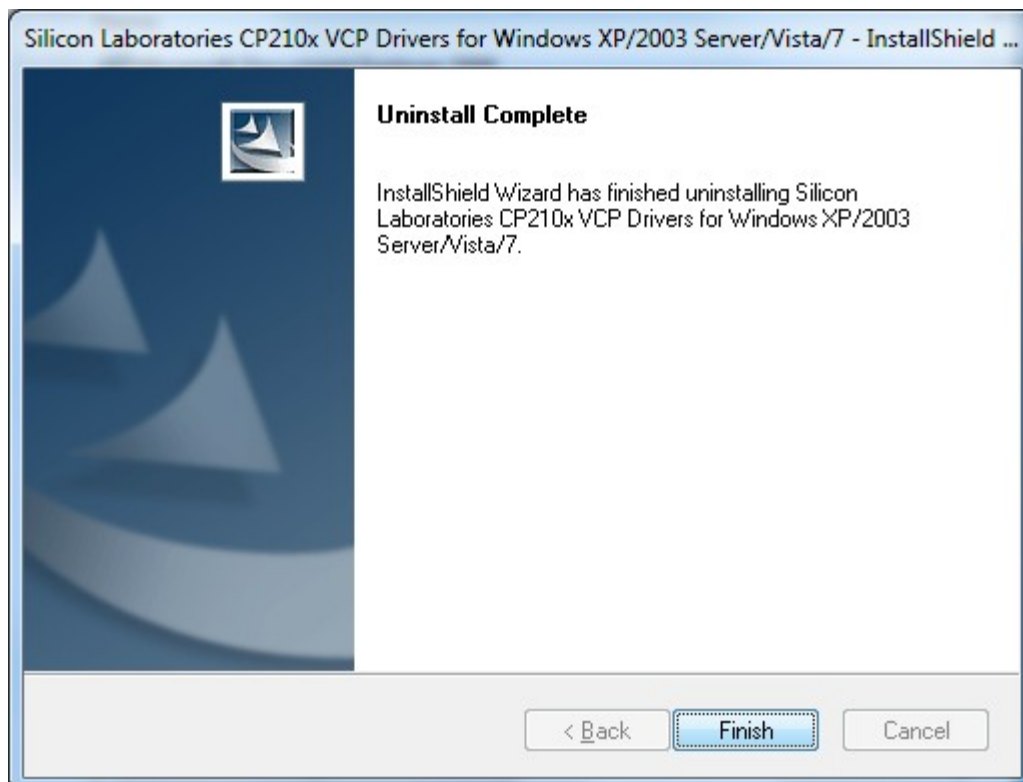
Select **Yes** in the popup-window. This will resume the uninstallation.



After successful uninstallation a window as shown below will appear. Click **OK** to confirm.

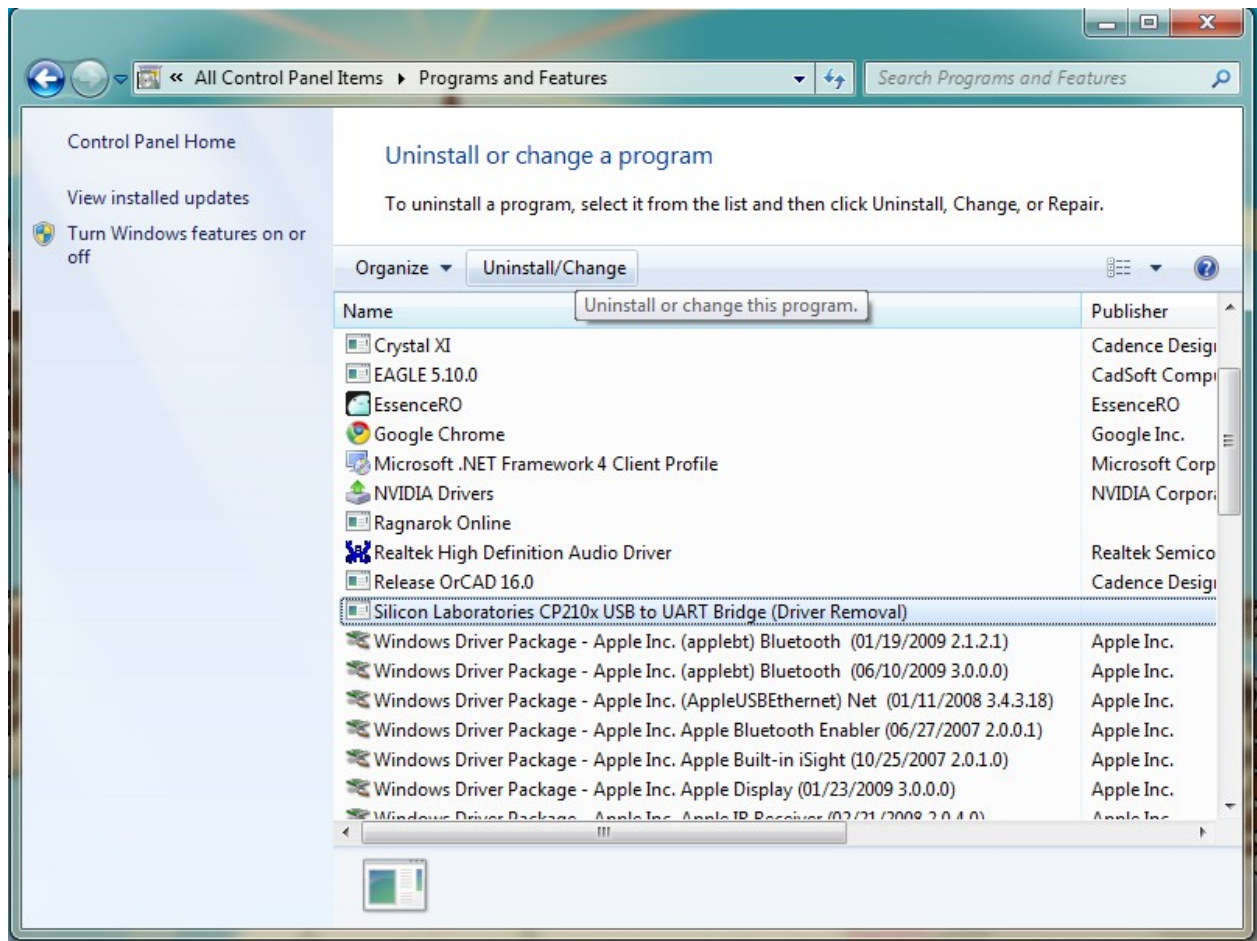


Click **Finish**. The Uninstallation-window will be closed.

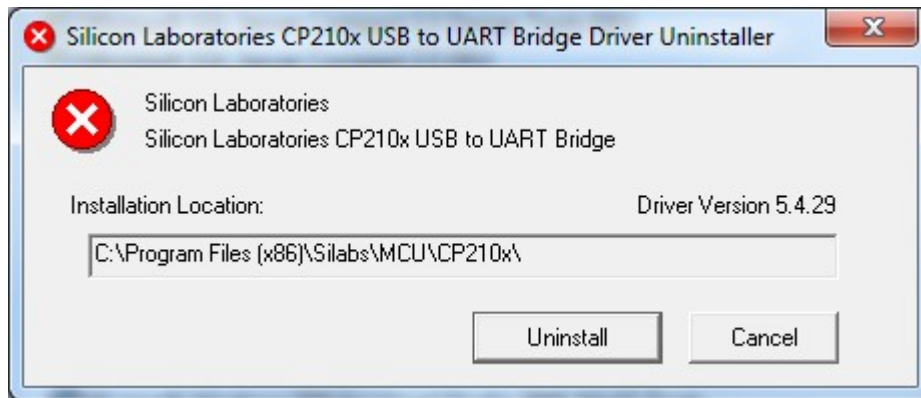


2. Uninstall CP210x USB to UART

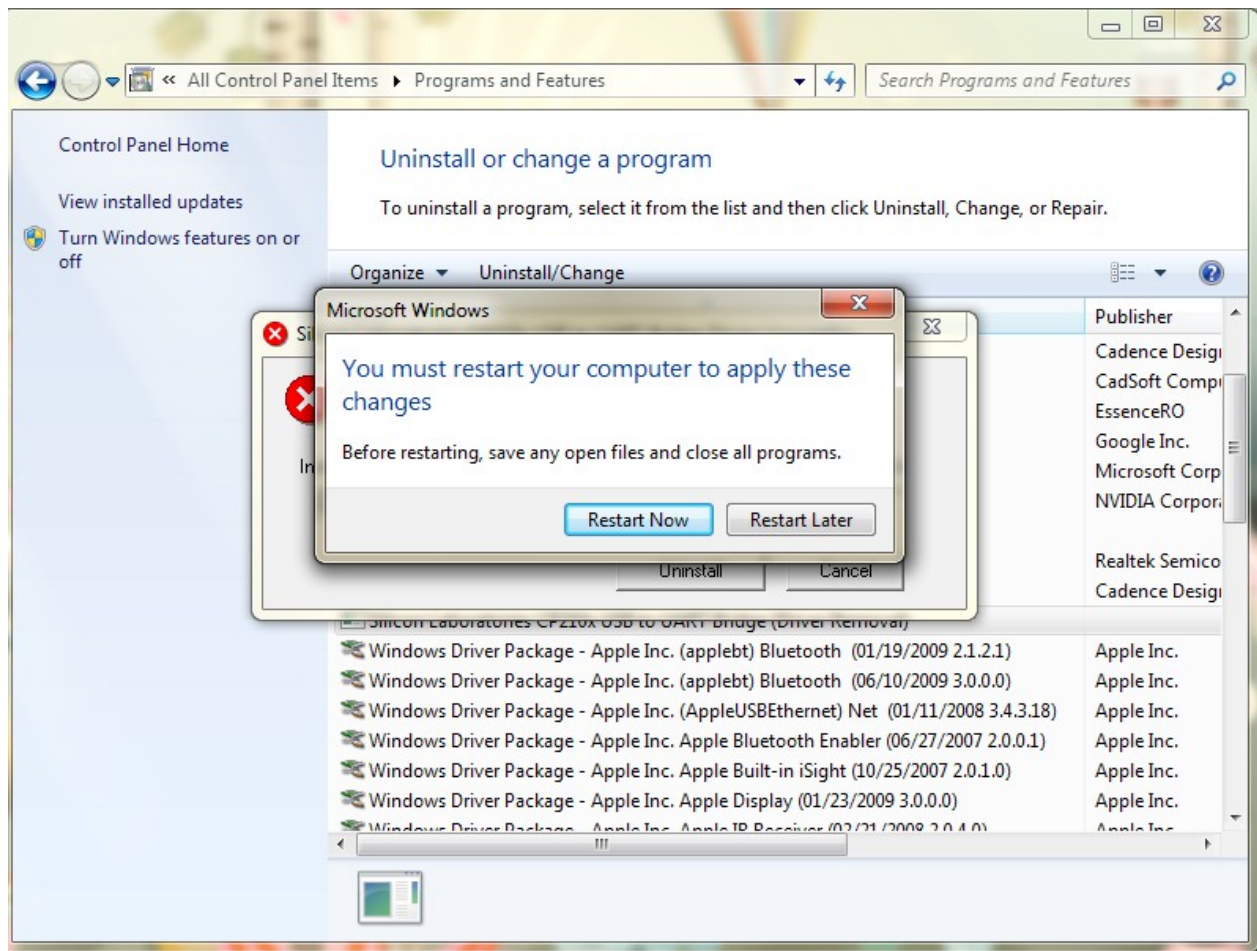
Select **Silicon Laboratories CP210x USB to UART Bridge** in the window **Programs and Features** and click **Uninstall/Change**.



In the popup window once again choose **uninstall**.



Select **Restart Now** to resume uninstall of the drivers.

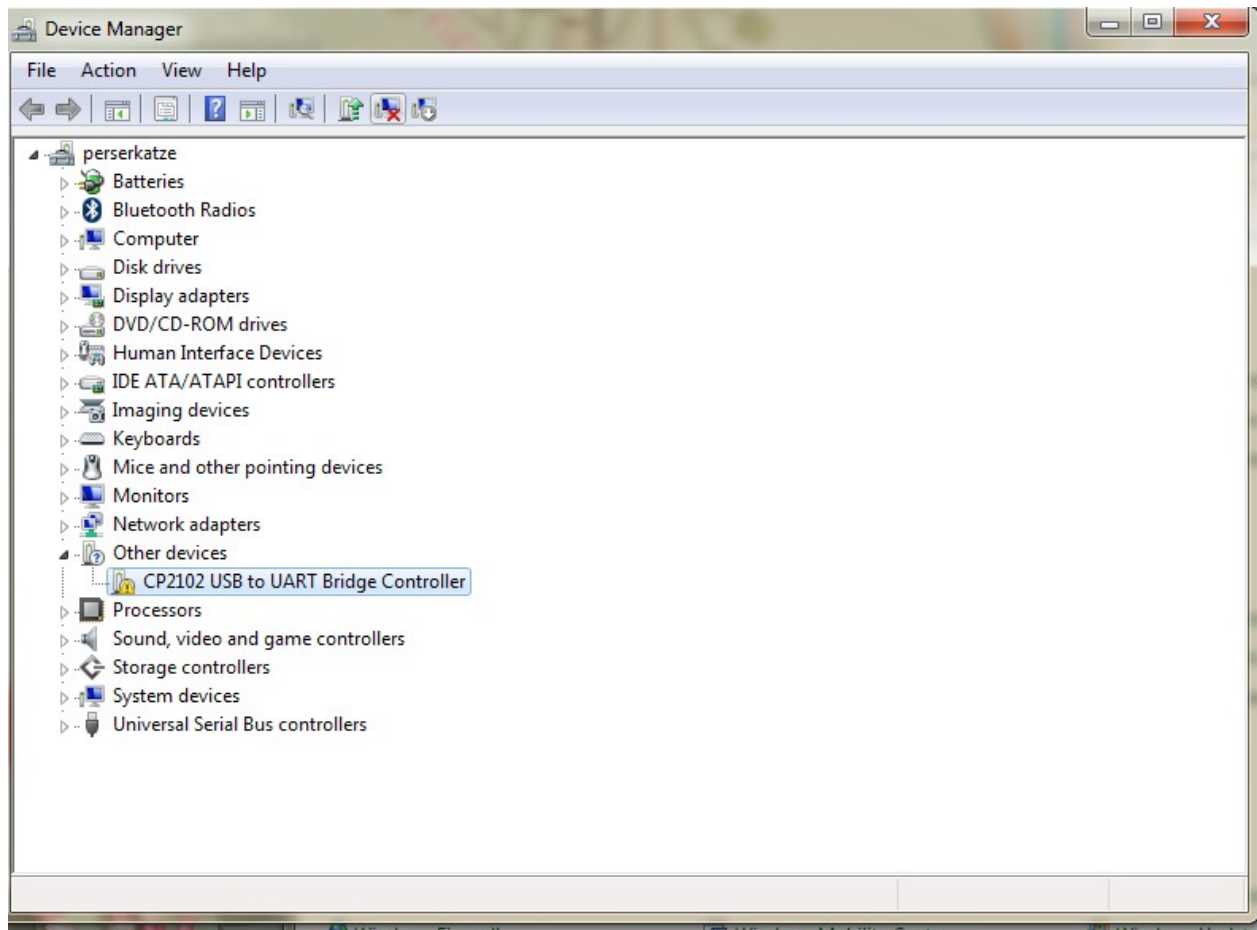


3. Remove CP210x USB to UART in the Device Manager

After restart of your computer start the **Device-Manager**. You can get there by **Start-> Control Panel-> Hardware and Sound**.

Please switch your VM2160 device on and connect to the PC. In the device manager under the **connection (COM & LPT)** or **Other Devices** section the **CP210x USB to UART Bridge Controller** will

appear. Select this entry and uninstall by right-click on the item. In the popup-window select then uninstall.



Select **OK** for the following warning.

llos

ers

1 drives

ace Devices

PI controllers

es

er pointing devices

ters

iB to UART Bridge Controller

and game controllers

ollers

is

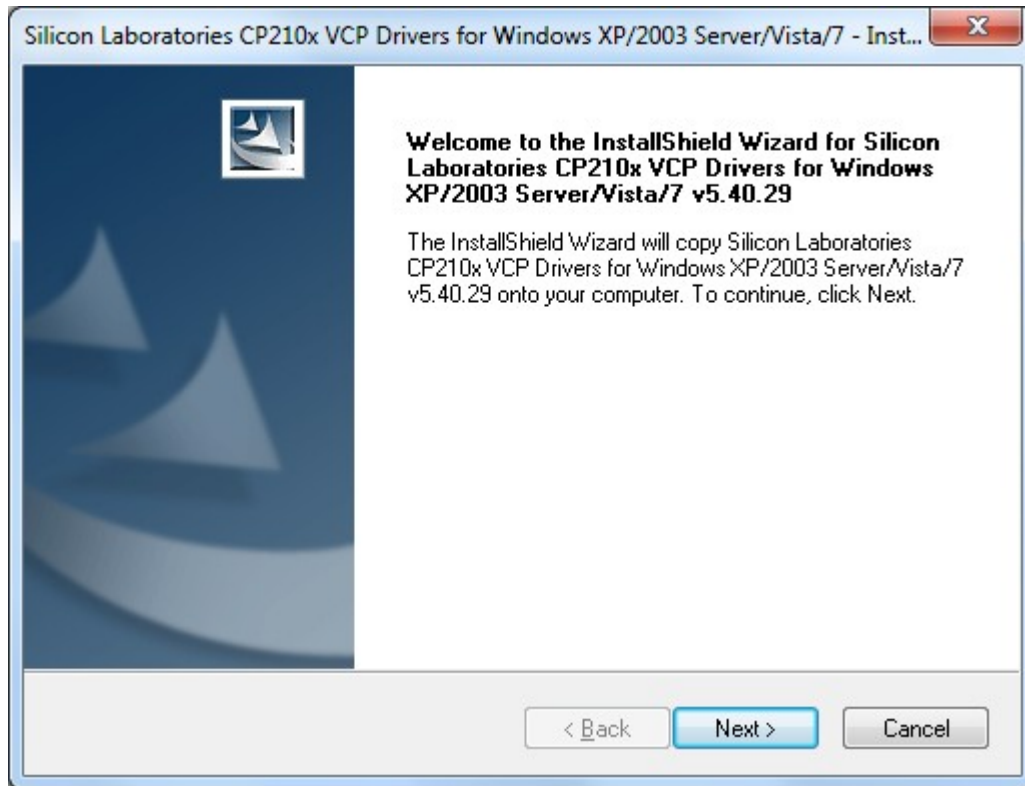
al Bus controllers

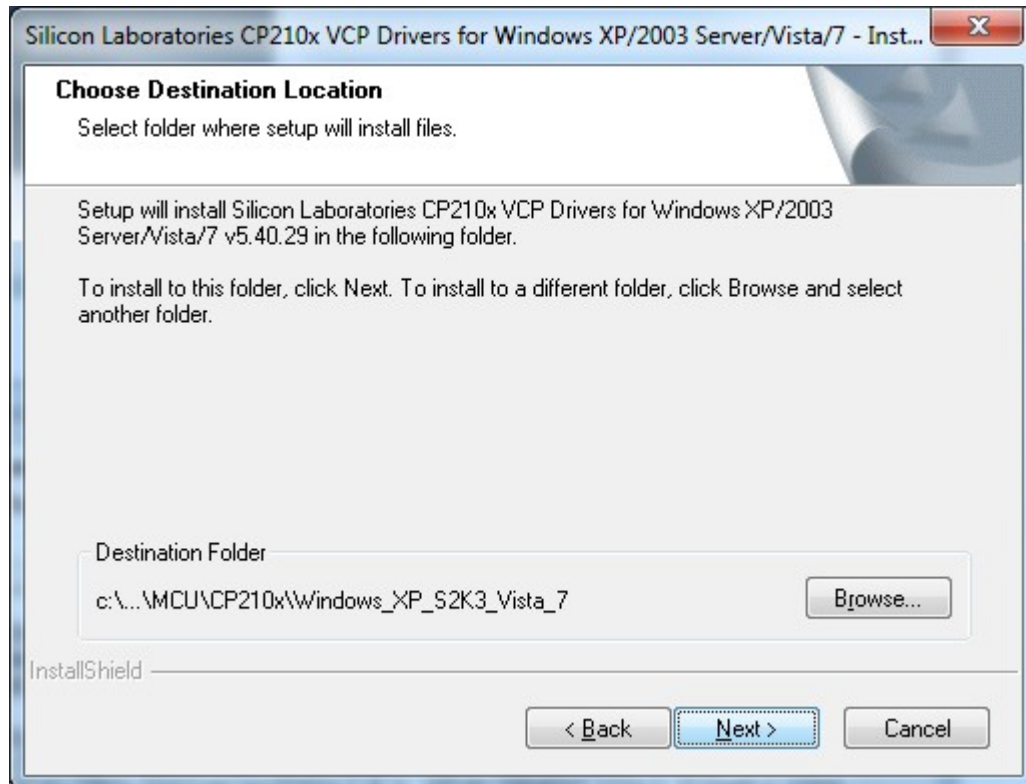
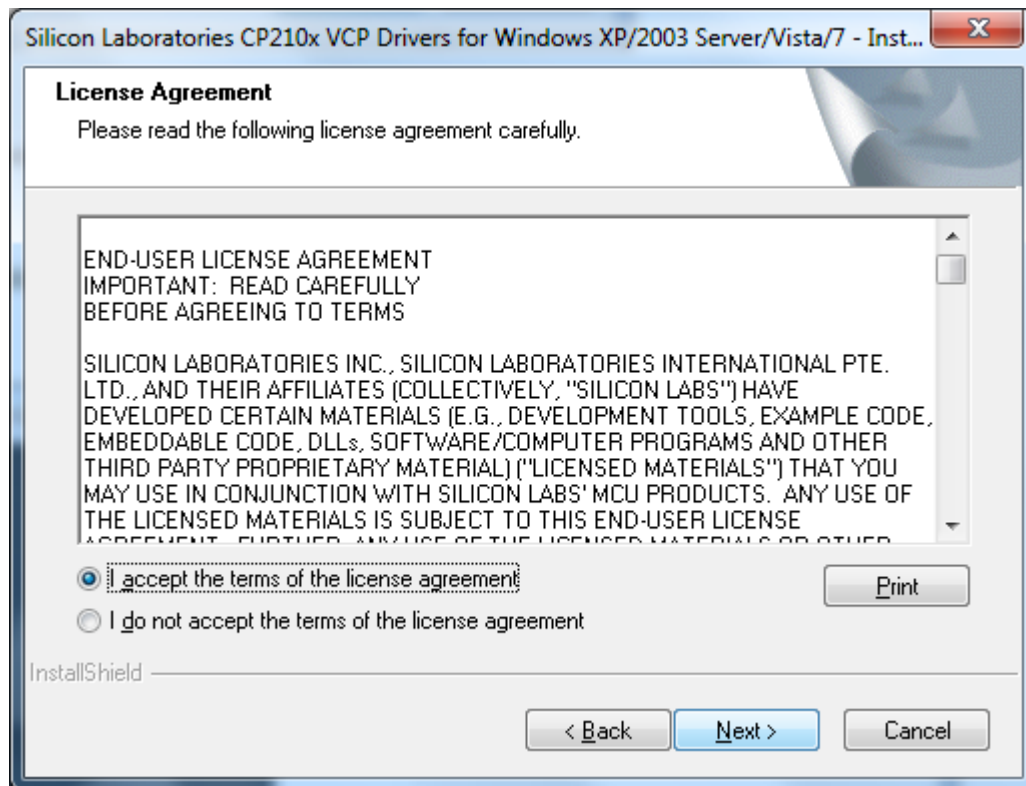


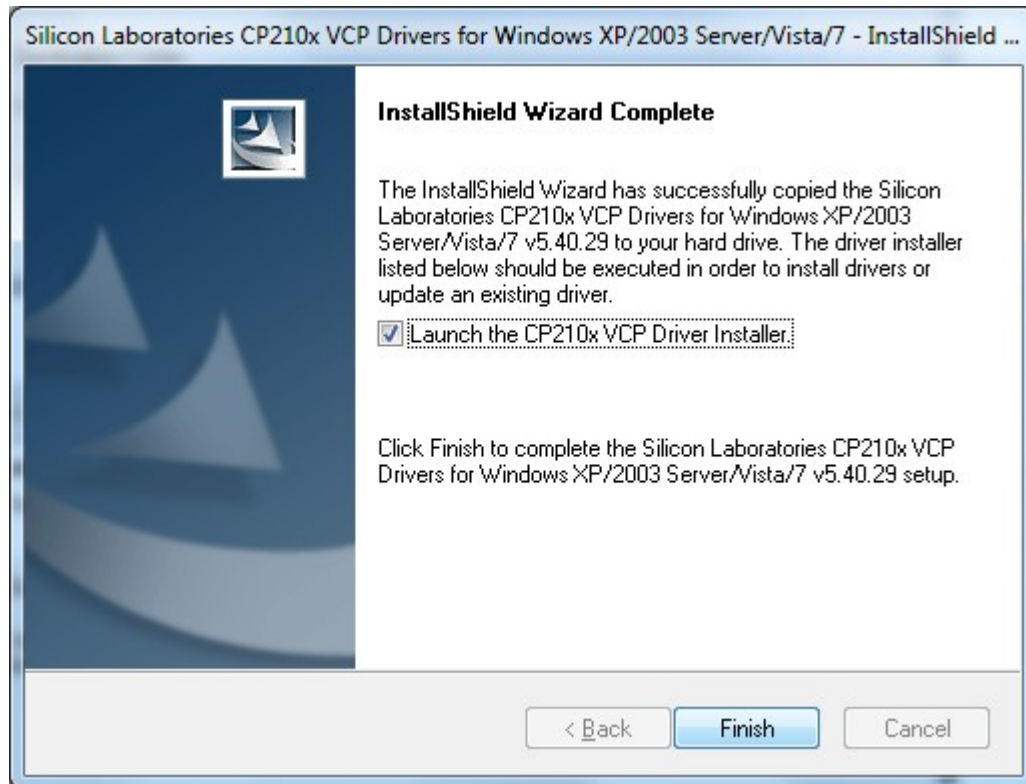
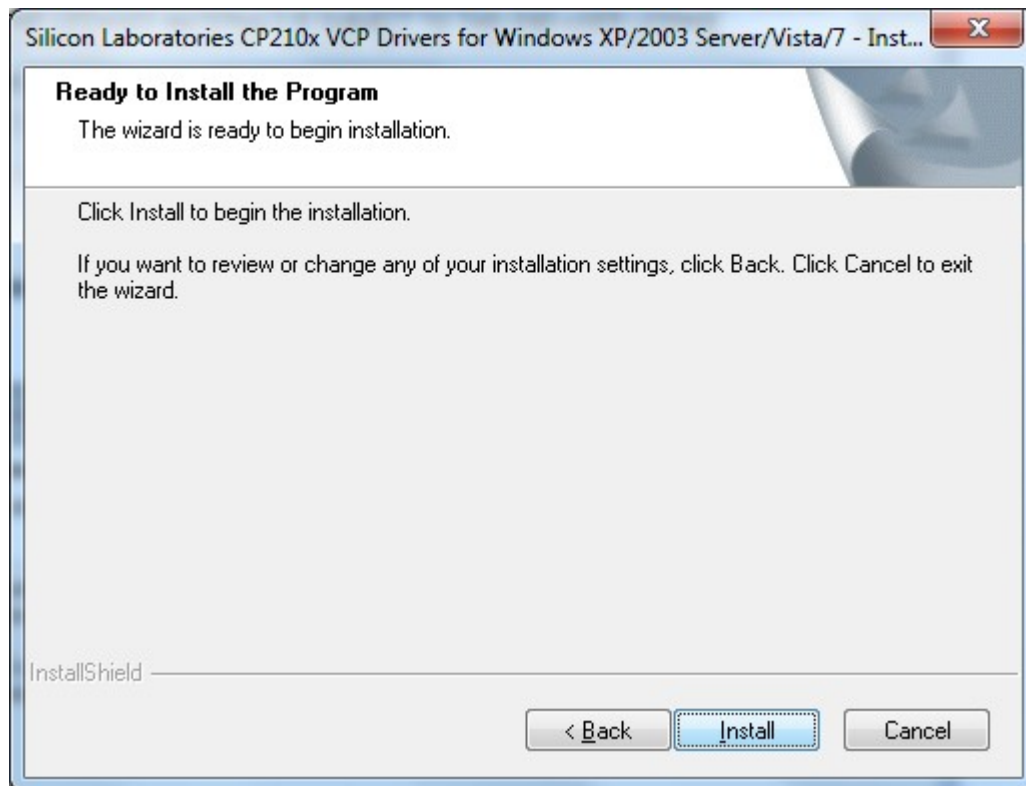
Now the uninstalling of the drivers is completed. Disconnect your VM2160 device from the PC.

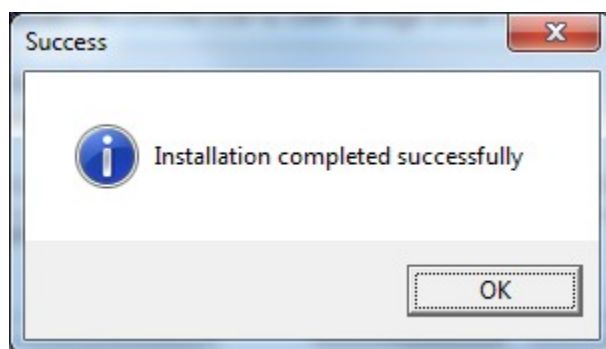
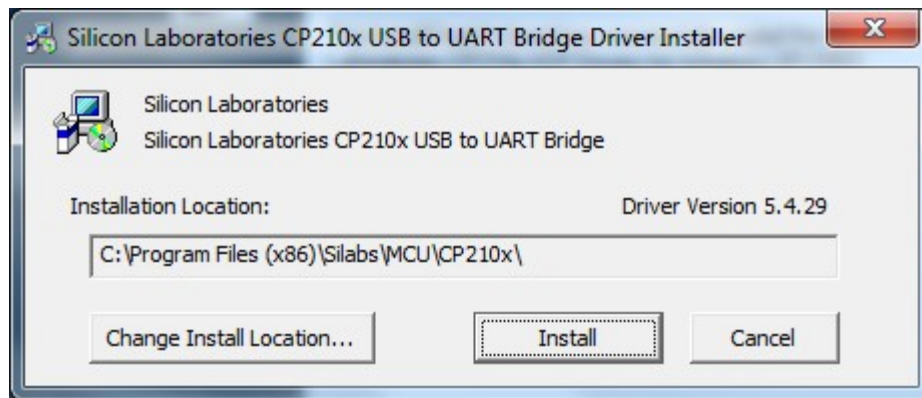
Installation of new drivers

Start the install file *CP210x_VCP_Win_XP_S2K3_Vista_7.exe* and follow the guides.

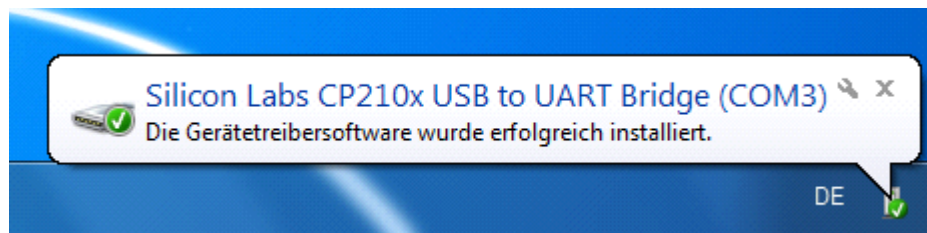








After successful installation, please connect again your VM2160 device to the computer. The device will be automatically recognized by Windows and the correct driver will be installed.



(Translated: The device driver software was installed successfully)