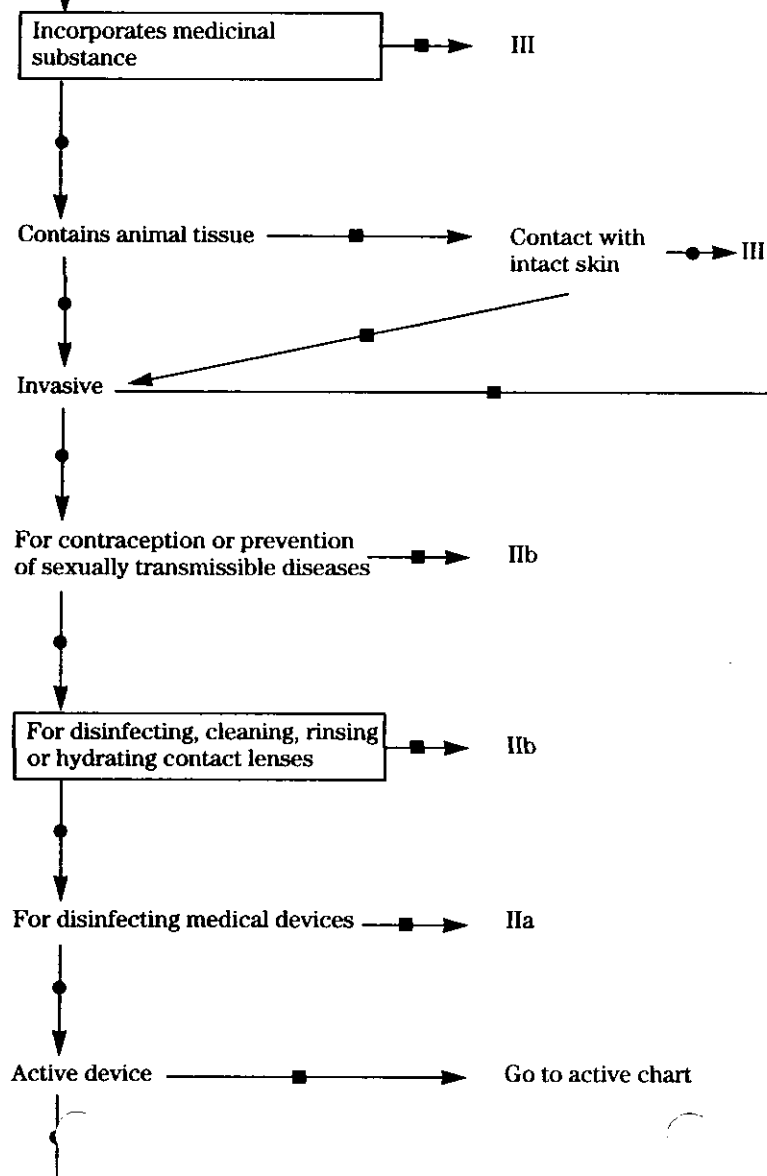


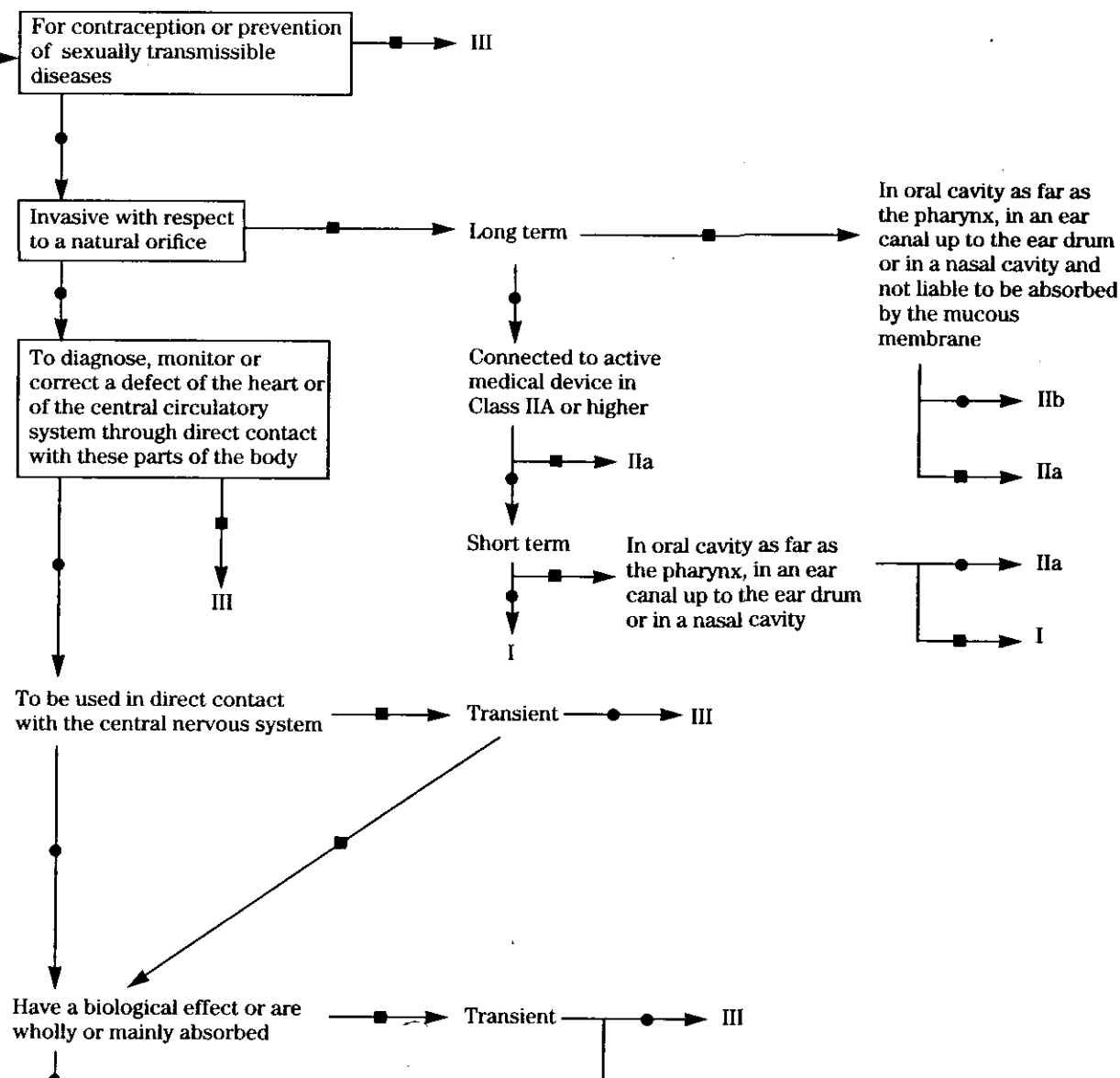
Start Here

NON-INVASIVE CHART



INVASIVE CHART

■ = YES
● = NO



diagnostic image

For modifying the biological or chemical composition of blood, other body liquids or other liquids intended for infusion into the body

By filtration centrifugation or change of gas, heat

IIb

IIa

For channeling or storing blood, body liquids or tissues, liquids or gases for the purpose of eventual infusion, administration or introduction into the body

May be connected to an active device Class IIa or higher

IIa

For storing or channelling blood, or other body liquids, organs, parts of organs or body tissues

I

Blood bags

IIb

IIa

For injured skin

I

Dermis breached and can heal only by secondary intent

IIb

Used as a mechanical barrier, for compression or for absorption of exudates

I

IIa

ionizing radiation

IIb

Undergo chemical change

Placed in teeth

Transient

Long term

III

IIb

Administer medicines

Long term

III

Short term

IIb

In a potentially hazardous manner

IIb

Implant or long term

In teeth

IIb

IIa

Reusable instrument

IIa

Transient

IIa

I

ACTIVE CHART

■ = YES

● = NO

