



Order Code: 392-1165

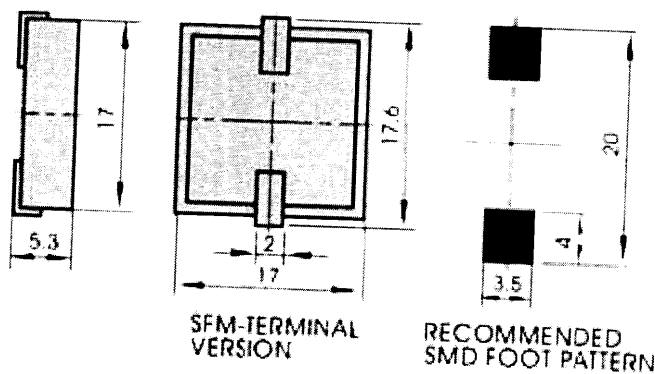
SMD External-driven Piezo Transducer

• SFM-1740

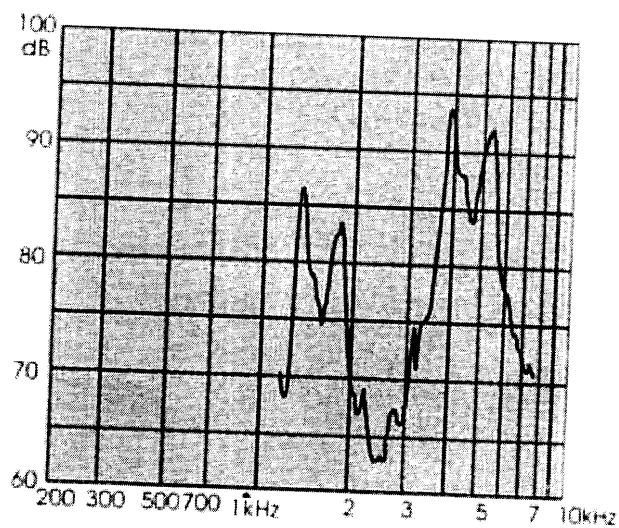


- This item is designed for surface mounting applications
- Housing material is in PPS
- The pin is plated with gold, which can meet the request of re-flow soldering process at 260°C for 10 seconds
- Small size
- Low current consumption

DIMENSIONS: (Unit: mm)



CHARACTERISTICS:



Model No

SFM-1740

Min. sound pressure level (dB)	80/4.0kHz/5V _{P-P} Square Wave /10cm
Max. Consumption (mA)	2.5/4.0kHz/5V _{P-P} Square Wave
Resonant Frequency (kHz)	4.0 \pm 0.3
Capacitance at 120Hz(nF)	14 \pm 30%
Allowable input voltage	20V _{P-P}
Operating temperature ($^{\circ}$ C)	-20 $^{\circ}$ ~+85