	Short User Instructions	Revision 2
Internal Document	MSP430 Update Assistant	Page 1 of 6

Short Instructions for Use:

MSP430 Update Assistant

Drafted: S. Molleker	Approved: H. Fröhlich Date: 10.05.2010
File: MSP430 Update Assistant_rev2.doc	

bluepoint MEDICAL	Short User Instructions	Revision 2
Internal Document	MSP430 Update Assistant	Page 2 of 6

A. Purpose of the document

This document describes the use of the MSP430 Update Assistant.

With this software a new firmware can be uploaded to the microcontroller of the CapnoTrue monitors via USB.

B. Installing the software

1. Open the file “**Flash Update Assistant V1.3.EXE**”
2. Follow the instructions for installing the software
3. After installation an icon is created on the desktop

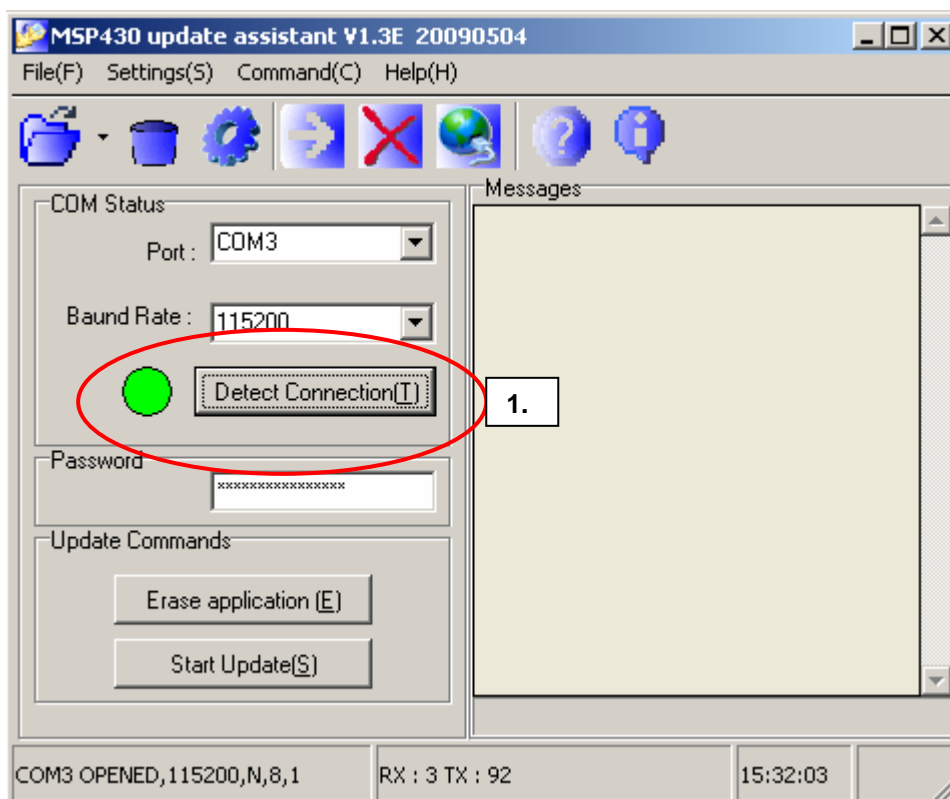


bluepoint MEDICAL	Short User Instructions	Revision 2
Internal Document	MSP430 Update Assistant	Page 3 of 6

C. Updating a CapnoTrue device

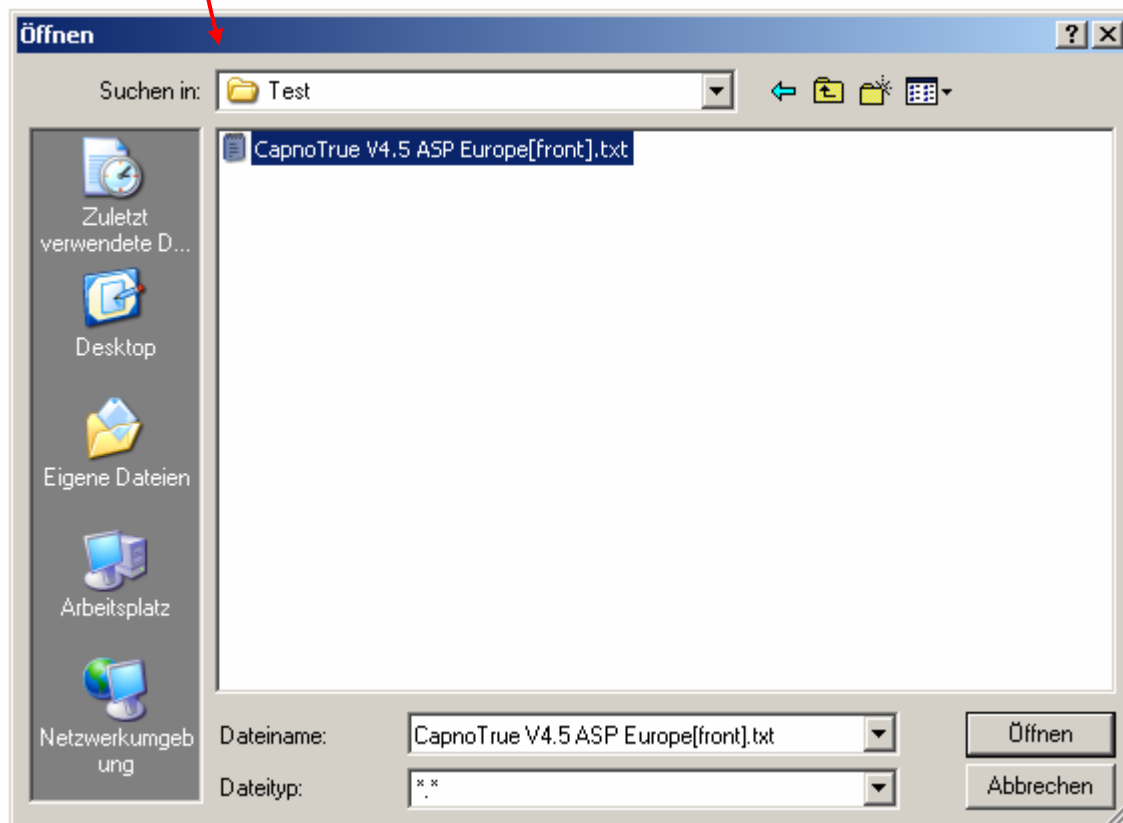
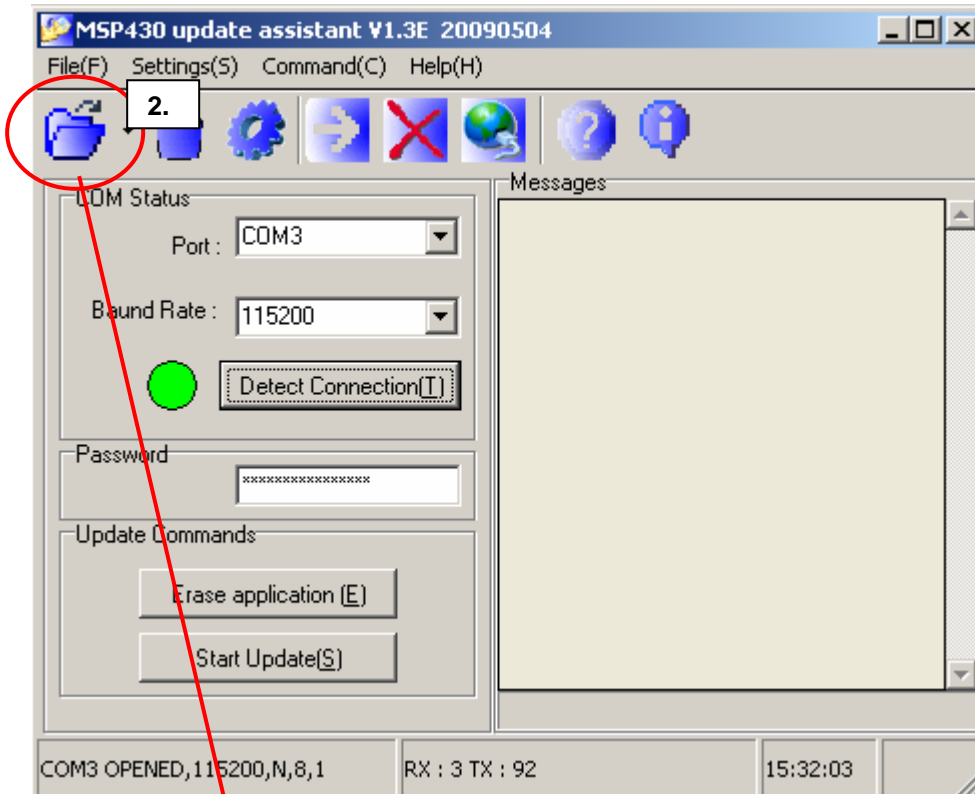
- Connect the CapnoTrue via USB to the PC.
- Turn on the CapnoTrue device.
- Open the “**MSP430 Update Assistant**”

1. Select “**Detect Connection**” to find the connection to the CapnoTrue device.



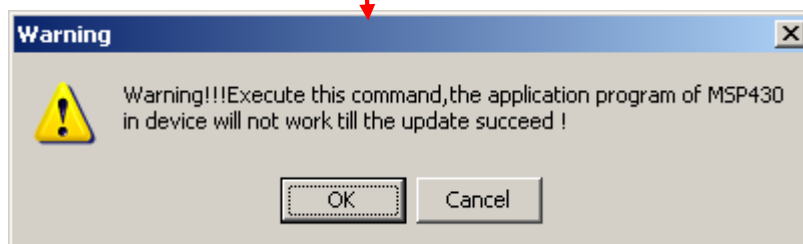
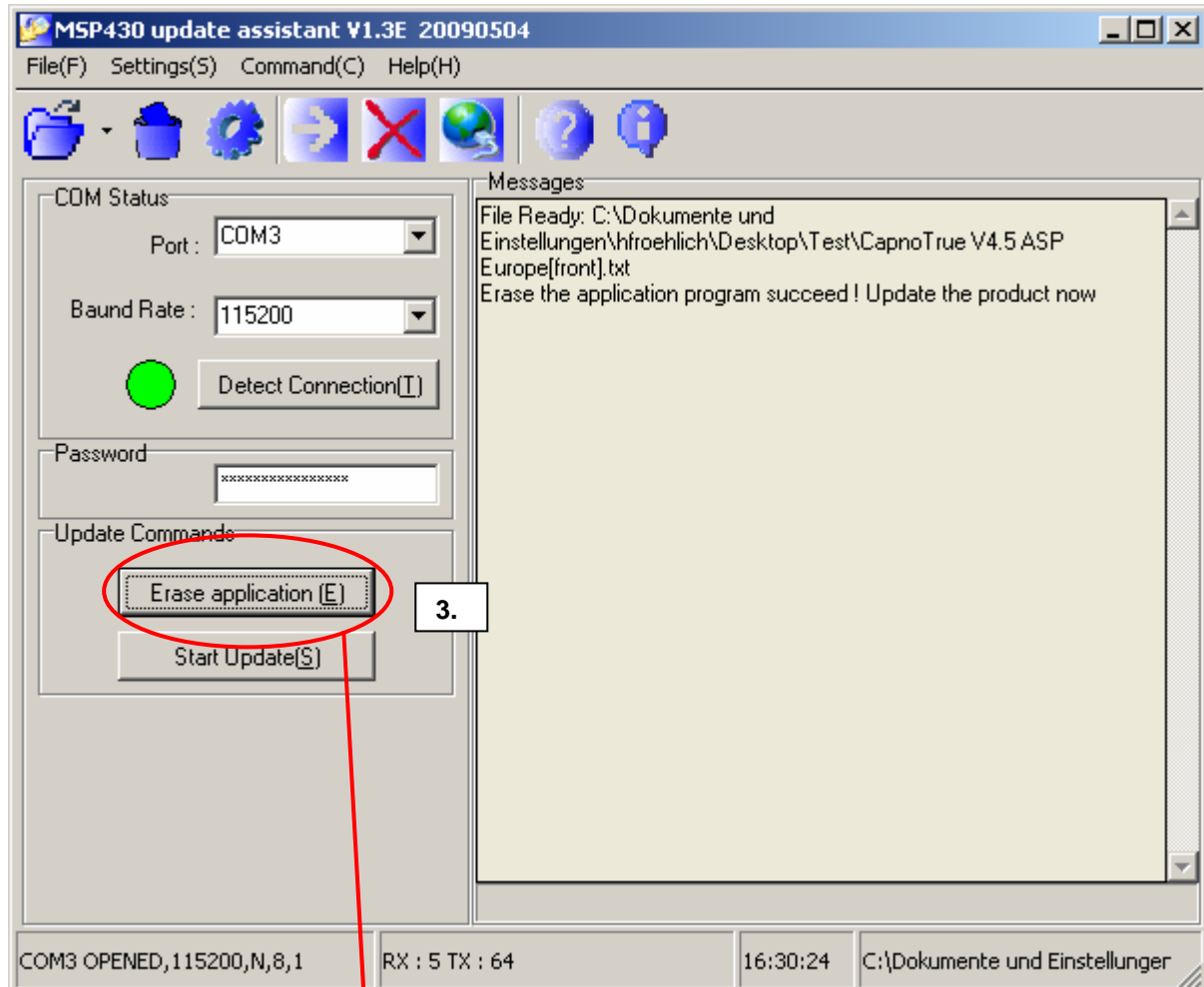
bluepoint MEDICAL	Short User Instructions	Revision 2
Internal Document	MSP430 Update Assistant	Page 4 of 6

2. Select the new firmware code



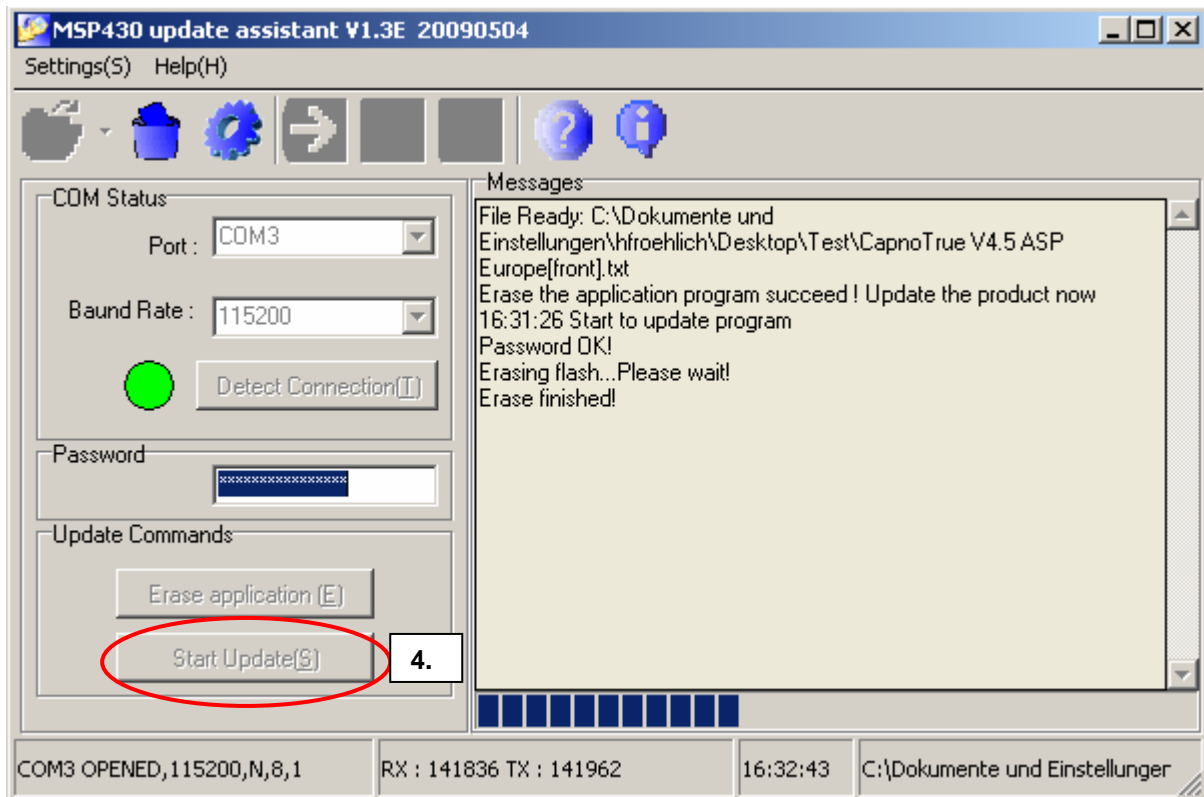
bluepoint MEDICAL	Short User Instructions	Revision 2
Internal Document	MSP430 Update Assistant	Page 5 of 6

3. Erase the current firmware by selecting “Erase application”



bluepoint MEDICAL	Short User Instructions	Revision 2
Internal Document	MSP430 Update Assistant	Page 6 of 6

4. Update the firmware by selecting “**Start Update**”. Installation requires a few minutes.



5. After the firmware has successfully been updated, the update assistant can be closed

