

Data Sheet



ANAESTIM NERVE LOCATOR

The ease with which nerve blocks can be performed is greatly increased when the nerve is located with a low powered stimulator connected to the exploring needle.

The ANAESTIM is a purpose built stimulator with several novel features;

- * Audible tone to indicate stimulation. Operates only when current is flowing.
- * Output current adjustable up to safe maximum of 10 mA.
- * Automatic compensation for changes in electrode impedance (constant current).
- * Stimulation at one pulse/second. (pulse width 0.2ms.).
- * Low battery indicator (green indicator replaced with red indicator when battery is exhausted).
- * Compact size (approximately 102mm x 61mm x 26mm).

SUGGESTED USES.

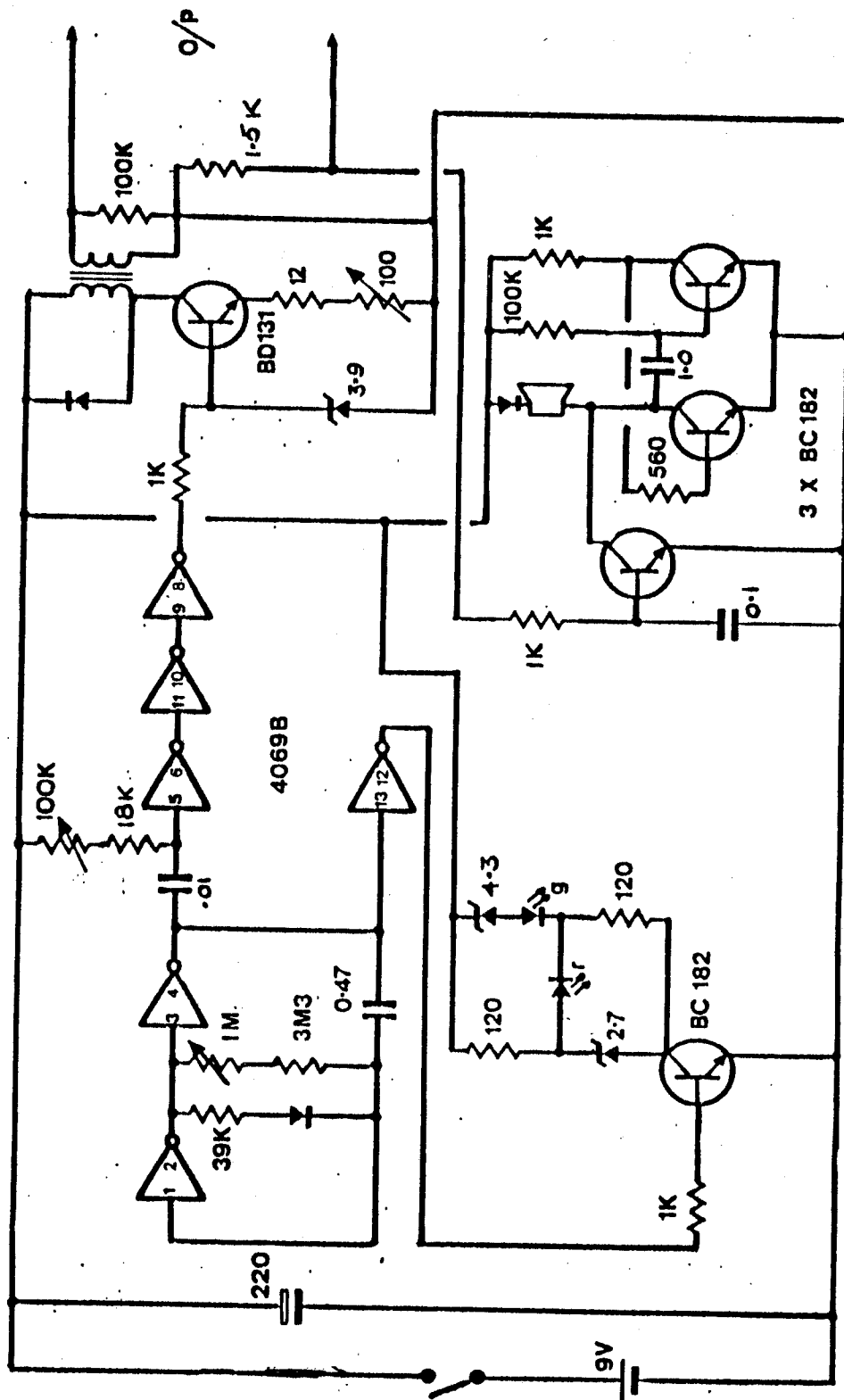
- * Local anaesthetic blockade of single nerves and nerve trunks.
- * Nerve location during surgery, eg. facial nerve during parotid dissection.

Autoclavable leads are supplied. An ordinary ECG type electrode is used for the indifferent connection. The active lead is supplied with a clip for attachment to an exploring needle. A special lead and probe are available for surgical use.

Insulated 23g, 60mm needles are available on request.

Supplied with lead, soft case and battery.

ANAESTHETIC



NERVE LOCATOR