	<b>SMARTsat OEM</b>	Rev. 0
<b>Internal Document</b>	Drawing - DWG: 10020660002_0	Page 1 of 2

# SMARTsat® sensor plug - PCB mounting version

REF: 10020660002

## Document history

Rev.	Date	Author	Revision Summary	Review
0	05.12.2016	HF	initial Version	UT

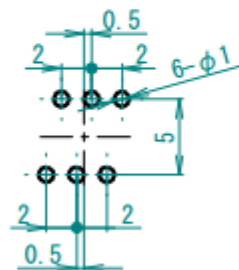
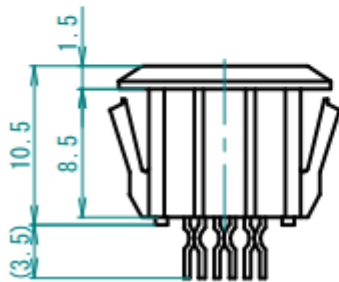
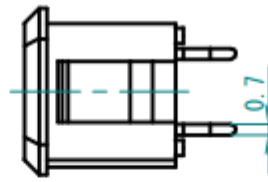
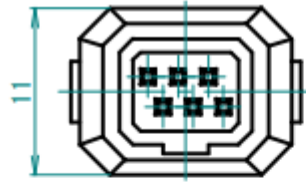
## COMPANY CONFIDENTIAL

This document is the property of Bluepoint MEDICAL GmbH & Co. KG and is protected by German and international copyright law, and may not, without the written permission by Bluepoint MEDICAL GmbH & Co. KG, be given to any third parties.

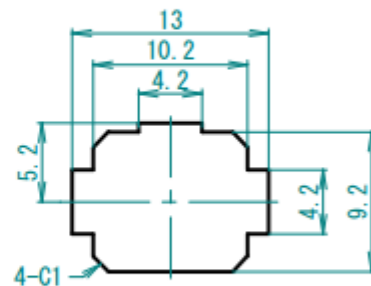
This report may only be reproduced or published in its entirety. Extracts could adulterate the stipulations and the results.

Issued: Heidi Fröhlich Date: 05.12.2016	Approval: Ulrich Timm Date: 05.12.2016
File: SMARTsat_sensor plug_PCB mounting_rev.0.docx	

<b>bluepoint</b> MEDICAL	<b>SMARTsat OEM</b>	Rev. 0
<b>Internal Document</b>	Drawing - DWG: 10020660002_0	Page 2 of 2



**Mounting Hole**  
Recommended P.C. Board thickness t1.6mm



**Mounting Hole**  
Recommended Panel thickness t1mm