



Welcome To the Viamed Training Programme On The Resuscitation Cabinet

v1.1 2004 Copyright Viamed 2004

Product Training Resuscitation Cabinet



This follows the recommended format of many hospitals in the NHS

Description of the product

Background information

Accessories

How to use the product

Safety

Competency Test

Product Training Resuscitation Cabinet

- What is the product
- Most women are healthy when they give birth and need no Technological assistance.
- They can however be traumatised by the presence of Hi-Tech equipment which is probably not going to be necessary
- But in a small % of cases some help is needed urgently



- What does it do
- Gives the Midwife and delivery staff quick access to
- Heat
- Suction
- Working platform
- Resuscitation

Product Training Resuscitation Cabinet

The equipment
can be
completely
hidden away
in the room
furniture



Product Training Resuscitation Cabinet

To be quickly
and easily
revealed if
the need
arises





Product Training Resuscitation Cabinet

What is the product

- An overhead warmer 

Product Training Resuscitation Cabinet

What is the product

- An overhead warmer 
- Suction Unit 

Product Training Resuscitation Cabinet

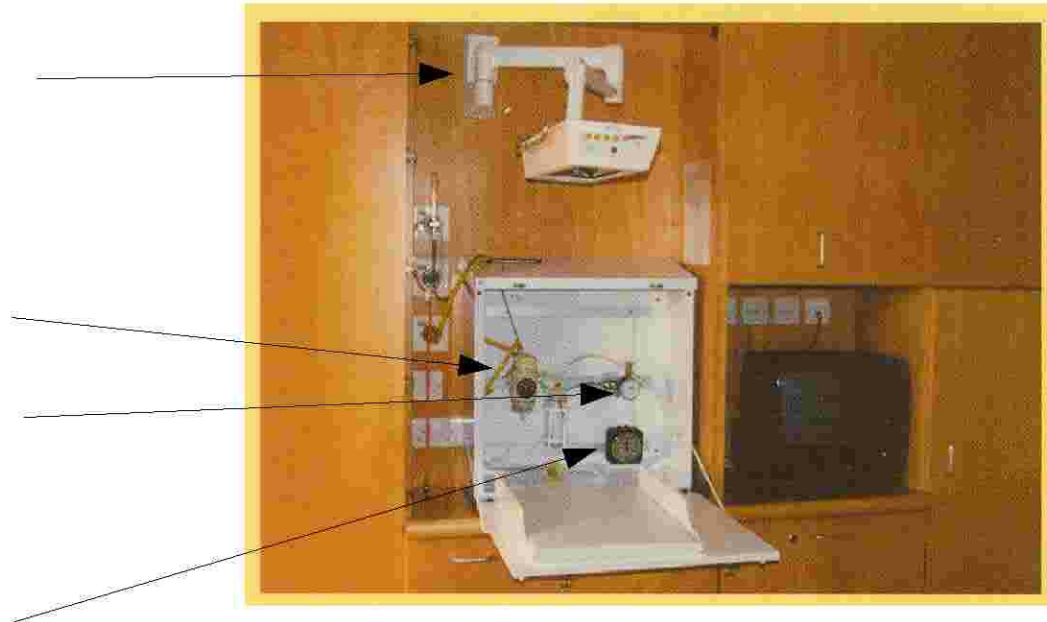
What is the product

- An overhead warmer
- Suction unit
- Resuscitation



What is the product

- An overhead warmer
- Suction unit
- Resuscitation
- Timing Clock for Apgar



Product Training Resuscitation Cabinet

What is the product

- An overhead warmer
- Suction unit
- Resuscitation
- Timing Clock for Apgar
- Working Platform



Product Training Resuscitation Cabinet

What is the product

A complete low
level

Intensive care
system



Product Training Resuscitation Cabinet

The cabinet

Front view



Product Training Resuscitation Cabinet

The cabinet



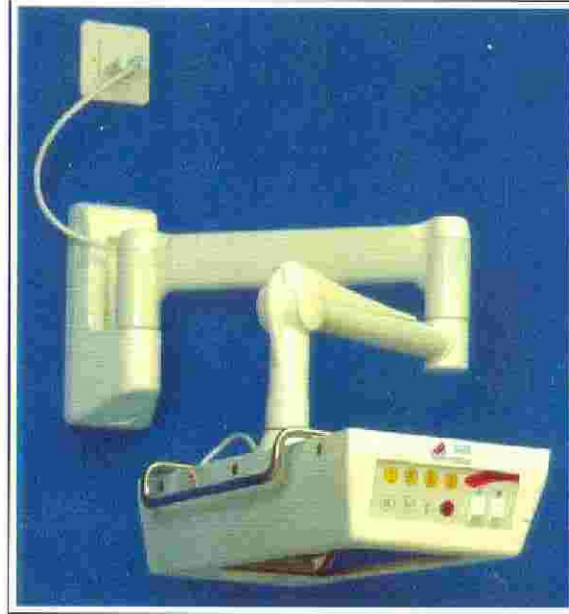
Side View closed

Side view open

Height from Heater to top of patient must be a minimum of 80cms

Product Training Resuscitation Cabinet

The Warmer



A full training course on the Ceratherm 600-1 is available separately

Product Training Resuscitation Cabinet

The Warmer



View folded away View ready to use

Product Training Resuscitation Cabinet

The Suction Unit

Any small suction unit can be used with the Viamed Resuscitation Cabinet

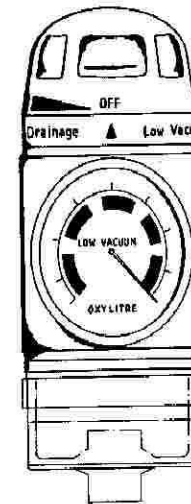
Viamed offer the following:



TherapyyEquipment



East



Oxylitre

Product Training Resuscitation Cabinet

The Suction Unit

Oxylitre



Product Training Resuscitation Cabinet

The Suction Unit

- Front view
- Side view
- Rear view
- Main components
- Main accessories



Product Training Resuscitation Cabinet

The Suction Unit Accessories

SUCTION JARS



**1.8L
POLYSULPHONE
RECEIVER
JAR**

(PART No. 4800)



(PART No. 4800)

The Therapy Equipment 1.8L Suction Jar (PART No. 4800) is manufactured in polysulphone, and is autoclavable up to 121°C.

It has an integral "Y" valve, and the lid fits by means of a "pressure cooker" type bayonet fitting. All seals and splutter tube are in silicone for long life.

The filter trap in the jar is designed to ensure maximum efficiency in preventing overflow, and incorporates design features to ensure the breakaway of foam.

The 9L Suction Jar is manufactured in polycarbonate, and has a screw top for ease of cleaning.

It does not have a filter trap, and should only be used with a Suction Controller having a Pipeline Protector or Secondary Float System.

DISPOSABLE LINERS FOR SUCTION JARS



(PART No. 4802)

The Therapy Equipment Disposable Suction Liner is used in conjunction with the Therapy Equipment Suction Jar.

It has a single connect on to the patient inlet, and safeguard features including:

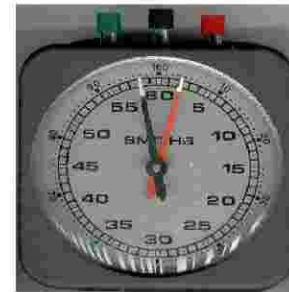
- A one-way valve on the patient inlet.
- A hydrophobic filter to retain the effluent in the Liner.
- A filter cover to enable maximum use of the Liner.
- A seal device to mask the Liner self-contained after use.

The Tom Thumb Resuscitation Unit



Product Training Resuscitation Cabinet

The Timer



Product Training Resuscitation Cabinet

The Timer

Reset

Start/Stop



Product Training Resuscitation Cabinet

The Timer

Changing the batteries



1. Remove the battery box cover, pull out the battery insulating strip and refit the battery box cover.
2. Ensure the screen display reads 0:00:00.00.
3. To start or stop the timer respectively, press & release the red Start / Stop button.
4. To zero the timer, press & release the black Reset button.

If the display shows LOBAT, replace the battery with an equivalent 1.5V alkaline AA battery.



Show how it is assembled

- Main Instrument
- Accessories
- Batteries
- Mains power

Possible User faults

No Oxygen connected

Tom Thumb not set up correctly

Heater not switched on or too low setting

Timer battery exhausted

Possible Equipment faults

Tom Thumb leaks

Timer not re-set before starting

Heater faulty

-
- Instrument faults

Environmental factors

Ambient Temperature

The Resuscitation unit is designed to envelope the baby in an area of warmth. It is not designed to raise the baby's temperature.

The stability of the temperature and the final temperature achieved will depend on Ambient temperature and drafts.

Cleaning & Sterilisation

Equipment

Product Training Resuscitation Cabine

Cleaning & Sterilisation

Accessories

Product Training Resuscitation Cabinet

Do's

Ensure Power is on

Ensure Oxygen is flowing

Reset Timer

Check the Tom Thumb for leaks

Check suction is connected

Don'ts

Do not use heater less than 80 cm above the baby

Do Not put excessive weight on the bed or Cabinet door

Do not jam Suction or Tom Thumb when closing the door

Do not by-pass the Tom Thumb

Any Precautions

Product Training Resuscitation Cabinet

Storage

The Equipment should be cleanedHow to
store

Storage conditions

Use In Operating Rooms

Flamable gases

Do not use the Heater or lights in the presence of inflammable gases

Autoclaves

No Items on the Resuscitation unit are autoclavable

-

Competancy Tests

Use of the item

1. What three sources of power should be connected

Electricity

Oxygen

Suction

2. What is the minimum height from baby to heater

80cms

Competancy Tests

Use of the item

4. What is the function of the Equipment

- Retain warmth

- Give manual resuscitation

- Apply suction

- Apgar timing

Competancy Tests

Safety checks and precautions prior to use

1. What three parameters must be set before use.

Temperature of the heater

Oxygen Flow rate

Maximum Inspiration Pressure

Correct procedure for set up

Knowledge of indications given while item in use

Question

- Understanding of and ability to explain readings

Product Training Resuscitation Cabinet

Competancy Tests

Use of the item

1. What three sources of power should be connected

Electricity

Oxygen

Suction

2. What is the minimum height from baby to heater
80cms

Competancy Tests

- Battery life
- Maintenance Cleaning and storage
- Any special precautions
- Standard problems & Common faults