

Heater Only

*Turn on
Select temperature
Turn light on (optional)*

Resuscitation Cabinets

(Head swivels 180° and locks in position)



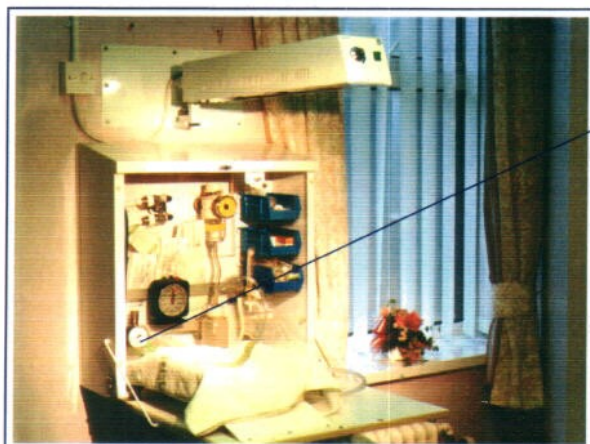
Includes:

Heater
Tom Thumb resuscitator
Suction controller
Clock
Storage bins



Tom Thumb

*Set flow
Set Pressure
Resuscitate fatigue free
by occluding 'T' piece
port with your thumb*



Viamed Limited, 15 Station Road, Cross Hills
Keighley, West Yorkshire, BD20 7DT
Tel: +44(0) 1535 634542/636757
Fax: +44(0) 1535 635582
www.Viamed.co.uk Email: info@viamed.co.uk

Viamed Suplies & Services

Pulse Oximeter Probes (new and repair), Temperature probes/monitors
ECG Cables, Perspex Products, Headboxes, Oxygen Monitors/Sensors
Nerve Stimulators, Baby Warmers & Infant Resuscitation Units

X
VIAMED

Resuscitation Cabinet

TC - 02 -898

SPECIFICATION SHEET

TC400R Wall mounted radiant heater with resuscitation cabinet

Wall mounted Ceratherm 600-2 radiant heater with double jointed arm

Part number: 52160022

Dimensions:

| | | | |
|-----------------------|--|--------------|-------------|
| Radiator: | Height 90mm | Length 550mm | Width 210mm |
| Weight: | 4.9 Kg | | |
| Power: | 220/240V, AC, 50Hz 630 watts | | |
| Heating: | Long life Ceramic, 600 watts (infra red radiation approximately 3n/M) | | |
| Lighting: | 20 watt halogen lamp (dazzle free) | | |
| Radiator performance: | 4 steps: 25%, 50%, 75%, & 99% of full power | | |
| Alarm: | 15 minutes, automatically switches to 25% power if alarm is not reset within 8 seconds (as per EC regulations) | | |
| Certification | IEC 601-2 TUV / CE | | |
| Colour | White RAL 9010 | | |
| Wall fixing: | 800mm to 1000mm between mattress and lower edge of heater | | |
| Wall plate: | 4 x M8 holes 80mm centres 130 mm between top and bottom set | | |
| Foot print: | Swing from wall 600mm - 1100mm | | |

Cabinet and accessories

Dimensions:

| | | | |
|---------------------|---|--------------|-------------|
| Cabinet: | Height 660mm | Length 650mm | Depth 280mm |
| Cabinet weight: | Empty - 19Kg, with standard accessories - approximately 25Kg | | |
| Bed: | White folded perspex with a head down slope | | |
| Mattress: | Height 25mm | Length 540mm | Width 230mm |
| Tom Thumb: | Weight: 1.32Kg, Pressure: 0 - 45cm H2O, Flow rate 0 - 5 Ltr/Min | | |
| Suction controller: | 0 - 150mm Hg (relief valve at 180mm Hg) 1/2ltr. polycarbonate jar | | |
| Clock: | Smiths model NS 22G Seconds Timer supplied with medical clamp | | |
| Storage bins: | Three size 3 blue lin bin | | |
| Medirail: | Standard 30mm x 10mm | Length 240mm | |
| Open shelf: | Height 190mm | Depth 150mm | Width 280mm |
| Wall fixing: | To be completed by the hospital to customer specified height | | |
| Wall plate: | 4 x M6 holes 555mm centres, 456mm between top and bottom set | | |

*A larger bed can be supplied upon request

Dimension: Customer specified

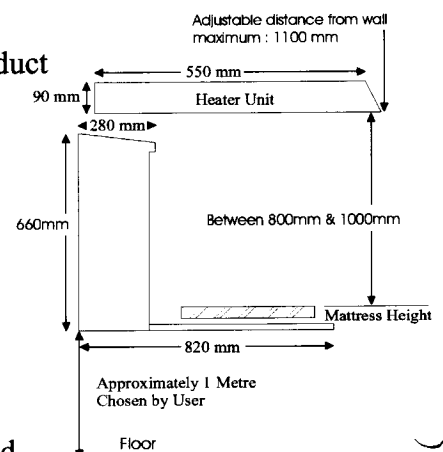
A mobile stand with heater and swivel arm is available as a stand alone product

Ceratherm 600-2 radiant heater with mobile stand

Part number: 52160030SM

Dimensions:

| | | | |
|---------------------------------|---------------|--------------|-------------|
| Ceratherm 600-2 radiant heater: | same as above | | |
| Mobile stand: | Height 1700mm | Length 640mm | Width 580mm |
| Mobile stand weight: | 41Kg | | |
| Height adjustment: | 200mm | | |
| Tilt range: | 45 degrees | | |



* These parts are not included in the standard TC400R and must be specified

All information supplied is for reference only and may be altered without notification. Measurements are approximate.

SPECIFICATION SHEET

Wall mounted resuscitation cabinet

Part number: 0310001

Dimensions:

| | | | |
|------------------------|---|--|-------------|
| Radiant warmer: | Height 90mm | Length 550mm | Width 210mm |
| Weight: | 4.9 Kg | | |
| Power: | 220/240V, AC, 50Hz | 630 watts | |
| Heating: | Long life Ceramic, | 600 watts (infra red radiation approximately 3n/M) | |
| Lighting: | 20 watt halogen lamp (dazzle free) | | |
| Warmer Control: | 4 steps: 25%, 50%, 75% & 99% of full power | | |
| Alarm: | 15 minutes, automatically switches to 25% power if alarm is not reset within 8 seconds (as per EC regulations) | | |
| Certification: | IEC 601-2 TUV / CE Class 11b | | |
| Colour | White RAL 9010 | | |
| Cabinet: | Height 660mm | Length 650mm | Depth 280mm |
| Cabinet weight: | Empty - 19Kg, with standard accessories - approximately 25Kg | | |
| Open crib: | Various designs available | | |
| Tom Thumb: | Weight: 1.32Kg, Pressure: 0 - 45cm H ₂ O, Flow rate 0 - 15 ltr/min | | |
| Suction controller: | 0 - 150mm Hg (relief valve at 180mm Hg) 1/2ltr. polycarbonate jar | | |
| Apgar timer: | Smiths model NS 22G seconds timer supplied with medical clamp | | |
| Storage bins: | Three size 3 blue Lin bins | | |
| Medirail: | Standard 30mm x 10mm | Length 240mm | |
| Open shelf: | Height 190mm | Depth 150mm | Width 280mm |
| Wall fixing: | To be completed by the hospital to customer specified height. Full installation instructions are available upon request. | | |

The warmer is also available as a wall mounted or mobile stand alone unit.

Radiant warmer with mobile stand

Part number 0310040

| | |
|----------------------|--|
| Radiant warmer: | Same as above |
| Mobile stand: | Height 1700mm Length 640mm Width 580mm |
| Mobile stand weight: | 41Kg |
| Height adjustment: | 200mm |
| Tilt range: | 45° |

All information supplied is for reference only and may be altered without notification. Measurements are approximate.