

**.141" MINIATURE PHONE JACKS**

41



42A

**TINI-JAX® MINIATURE PHONE JACKS, NUMBERS 41, 42A, 43A**

Tini-Jax 2-conductor phone jacks, (for limited space connecting, mate with miniature phone plugs having .141 inch diameter fingers and compatible tip shape) are 1/3 the size of Littel-Jax® and weigh less than 1/8 ounce. Notched insulators interlock internal parts. Unique tip spring shape mates with Switchcraft Tini-Plug® phone plugs. Mounting hole: .250 inch diameter in panels up to .125 inches thick (mounting hardware supplied). For insulated mount, order two washers separately, Number **S1564** (swedged fiber washer .312 inch diameter mounting hole) and number **S2207** (flat phenolic washer).

**SPECIFICATIONS MECHANICAL**

**Life:** 5,000 insertion/withdrawal cycles, minimum.

**ELECTRICAL**

**Contact Resistance:** .075 ohms maximum.

**Insulation Resistance:** 5,000 MΩ minimum.

**Dielectric Withstanding Voltage:** 250 V AC maximum.

**Contact Rating:** .25A, 48 V DC.

**MATERIAL**

**Mounting Bushing:** Brass, nickel-plated.

**Insulating Spacers:** XXP paper base phenolic.

**Springs:** Special alloy of spring tempered nickel silver.

**Sleeve Terminal:** Brass, hot-tinned.

**Hardware:** Supplied with one, Number **P11501**

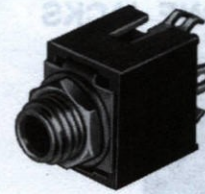
nickel-plated brass locknut, and one, Number **S17901** nickel-plated steel flat washer.

Part Number	Description	Jack Schematic <sup>1</sup>	Typical Mating Plug <sup>2</sup>
41	Open circuit	I	750
42A	Shunted (closed circuit)	III	750
43A	Special transfer circuit	Note 3	750
125	Extension jack	I	750
142A	Shunted (closed circuit)	III	750
PC142A	Shunted (closed circuit)	III	750

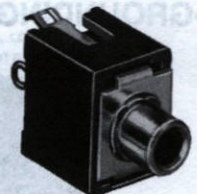
<sup>1</sup> See jack schematics, pages 51 and 52.

<sup>2</sup> See plugs section for mating information.

<sup>3</sup> When inserted, plug tip contacts "make" tip spring. Further insertion allows tip to short "make" tip spring and tip spring together. Full insertion opens tip shunt circuit.



142A



PC142A

**TINI-D-JAX® MINIATURE ENCLOSED PHONE JACKS, NUMBERS 142A, PC142A**

Tini-D Jax uses Hi-D Jax® construction and mounts on .375 inch centers. Weight: 3.6 grams. Number 142A mounts through .25 inch diameter hole in chassis/panel up to .125 inches thick. Four standoff dimples can be molded into housing to reduce effective length of bushing to .187 inches (special order). Number PC142A has special spring terminals for "snap-in" mounting to PC boards up to .125 inches thick - ready for hand, wave or dip-soldering.

**SPECIFICATIONS MECHANICAL**

**Life:** 5,000 insertion/withdrawal cycles, minimum.

**Insertion/Withdrawal:** 15 ounce minimum, 40 ounce maximum, insertion. 12 ounce minimum, 25 ounce maximum, withdrawal.

**ELECTRICAL**

**Contact Resistance:** .10 ohms maximum.

**Dielectric Withstanding Voltage:** 250 V AC maximum.

**Shunt Tension:** 100 grams minimum.

**MATERIAL**

**Housing:** Molded phenolic.

**Mounting Bushing:** Brass, nickel-plated.

**Tip Spring:** Beryllium copper, silver-plated, bifurcated.

**Shunt Springs:** Brass, silver-plated.

**Sleeve Bracket:** Steel, cadmium-plated.

**Insulator:** XXP phenolic.

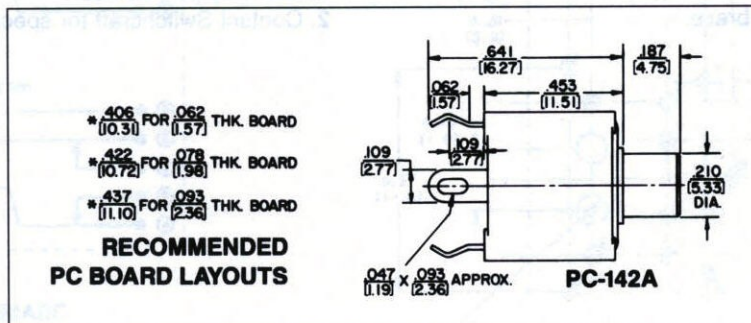
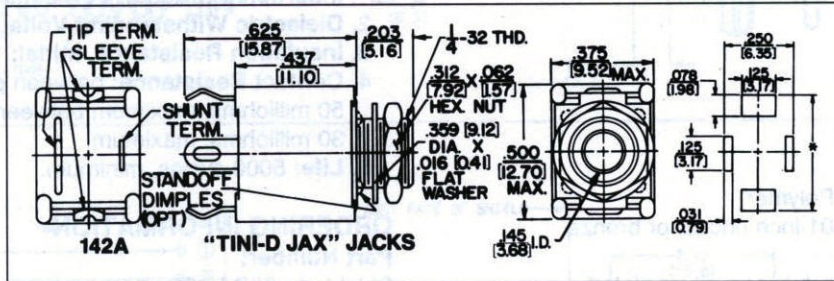
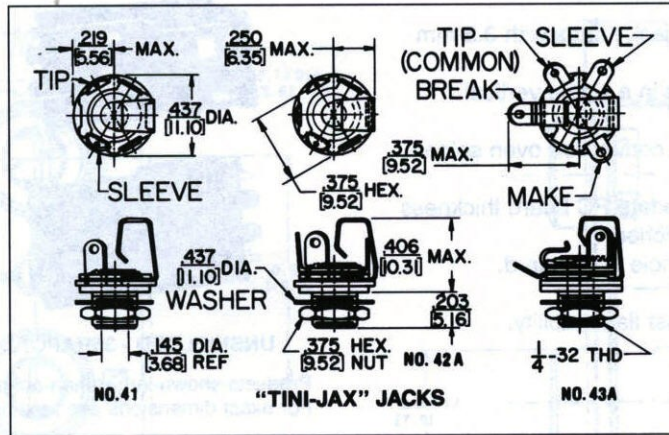
**Hardware:** Number 142A supplied with one, Number **P1975** nickel-plated brass locknut, and one, Number **S3997** nickel-plated steel flat washer.

DIMENSIONS ARE FOR REFERENCE ONLY  $\frac{\text{Inch}}{(\text{mm})}$

**NOTE:** Contact your Switchcraft Representative for price and delivery.



## .141" MINIATURE PHONE JACKS (continued)



DIMENSIONS ARE FOR REFERENCE ONLY  $\frac{\text{Inch}}{(\text{mm})}$

NOTE: Contact your Switchcraft Representative for price and delivery.

## .141" MINIATURE PHONE PLUGS

FEATURING 3-PIECE CONSTRUCTION  
AND FINGER-PROTECTING HANDLE



Number 750

### FEATURES

- Miniature 2-conductor Phone Plug for use with Switchcraft Tini-Jax® miniature phone jacks. About 1/2 the size of Switchcraft Littell-Plug® phone plug. Average net weight, 1/8 ounce.
- Various terminal combinations:
  - (a) Dual purpose sleeve terminal may be clamped over metal braid or shielded cables; provides cable anchor. Easily soldered for perfect electrical connection.
  - (b) Screw terminal design (no cable clamp) for cable. Terminals that can be more suitably connected by screws.
- 1-piece tip rod staked into mating terminals; no disassembly of tip during use of plug. Terminals and body of plug interlocked mechanically.
- Available in black or red plastic handles or brass nickel-plated handles for shielding. Can be used with cables up to .188 inch outside diameter.

### SPECIFICATIONS

**Sleeve, Tip and Body:** Nickel-plated copper alloy.

**Terminals:** Copper alloy, electro-tinned. Solder lug or screw type (Screws #0-80).

**Handle:** Molded black or red plastic. Copper alloy, nickel-plated.



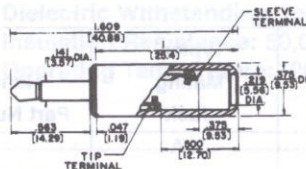
Number 780

Part No.	Terminals	Typical Mating Jack <sup>1</sup>	Handle	Part No.
740	Screw <sup>2</sup>	41	Black	M1055
745			Red	M1056
750	Solder Lug & Cable Clamp		Black	M1055
755			Red	M1056
2P1384			Less Handle	----
770	Screw <sup>2</sup>		Shielded	T13631
780	Solder Lug & Cable Clamp		Shielded	T13631

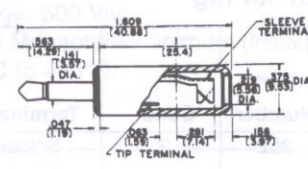
<sup>1</sup> Other mating plugs are available.

<sup>2</sup> Switchcraft replacement Part Number P1153. 2 screws required per plug.

DIMENSIONS ARE FOR REFERENCE ONLY.



No. 740  
Screw Terminals



No. 750  
Clamp-Lug Terminals

DIMENSIONS ARE FOR REFERENCE ONLY  $\frac{\text{Inch}}{(\text{mm})}$

NOTE: Contact your Switchcraft Representative for price and delivery.