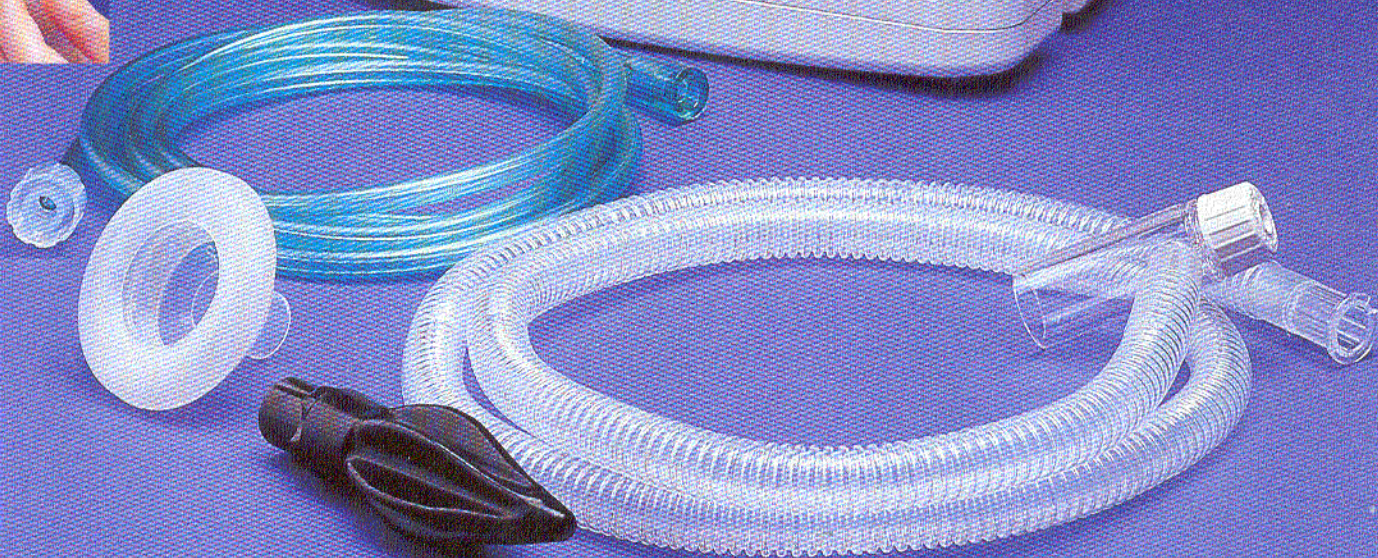


RD900 Neopuff™ Infant Resuscitator



Fisher & Paykel
HEALTHCARE

RD900 Neopuff™ Infant Resuscitator

The RD900 Neopuff™ Infant Resuscitator is an easy to use manually operated, gas powered resuscitator which provides controlled and accurate resuscitation of newborn babies in delivery suites, nurseries and neonatal intensive care units.

PRECISE CONTROL OF AIRWAY PRESSURE

- Once setup, the Neopuff™ Infant Resuscitator will safely inflate the babys' lungs and provide optimum oxygenation without the risks associated with under or over inflation at uncontrolled pressures.
- The desired peak inspiratory and positive end expiratory pressures are set using simple fingertip controls.

FAST & ACCURATE MANOMETER

- Provides constant monitoring and reassurance of the delivered peak inspiratory pressure and positive end expiratory pressure.

LIGHTWEIGHT PATIENT T-PIECE

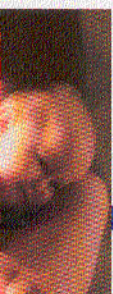
- Provides simple, effortless breath by breath resuscitation by occluding the patient T-piece aperture with your thumb or finger.



- The lightweight patient T-piece and patient supply line are especially useful over extended resuscitation periods.

INCREASED SAFETY

- The maximum pressure relief valve provides increased safety by allowing you to preset the maximum possible peak inspiratory pressure.



RD900 Neopuff™ Infant Resuscitator

- 1 RD900 Neopuff™ Infant Resuscitator
- 2 Patient Supply Line
- 3 Patient T-Piece
- 4 Gas Supply Line
- 5 Neonatal Face Mask
- 6 Test Lung



Accessories shown are optional. Please refer to product catalogue for part numbers.

Fisher & Paykel
HEALTHCARE

RD900 Neopuff™ Infant Resuscitator

PRODUCT SPECIFICATIONS

Manometer range -20 to 80 cm H₂O (-2.0 to 7.8 kPa)

Maximum pressure relief @ 10 LPM 3 to 80 cm H₂O (0.3 to 7.8 kPa)

Peak inspiratory pressure (PIP) @ 10 LPM 2 to 80 cm H₂O (0.2 to 7.8 kPa)

Positive end expiratory pressure (PEEP)
@ 5 LPM 1 to 5 cm H₂O
@ 10 LPM 2 to 15 cm H₂O
@ 15 LPM 3 to 25 cm H₂O

Gas inlet flow range 5 LPM (min) to 15 LPM (max)
If the gas inlet flow rate increases from 5 to 15 LPM, the peak inspiratory pressure typically increases approximately 8 cm H₂O (0.8 kPa).

Delivered oxygen concentration Up to 100% depending on gas supply

Operating time (400 L cylinder)
@ 5 LPM 80 minutes
@ 10 LPM 40 minutes
@ 15 LPM 26 minutes

Certification ISO 8382



Type Certified
No. U0111

CITECH

RD900 NEOPUFF™ INFANT RESUSCITATOR

Height 25 cm (9.8")

Width 20 cm (7.9")

Depth 10 cm (3.9")

Weight 2.1 kg (4.6 lb) excluding accessories

Recommended body weight Up to 10 kg (22 lb)

Operating and storage limits 90% relative humidity

For full product specifications please contact your Fisher & Paykel supplier.

MODEL SHOWN

RD900 Neopuff™ Infant Resuscitator.

ALSO AVAILABLE

Installed in the CosyCot™ Infant Warmer.

ACCESSORIES SHOWN

The accessories shown are intended only to illustrate a typical configuration for resuscitation. The 900 series Neopuff™ Infant Resuscitator and accessories can be customised to suit your requirements.

OTHER MODELS & ACCESSORIES

For more information please refer to our product catalogue.

ORDERING INFORMATION

The 900 series Neopuff™ Infant Resuscitator and accessories are available separately or as a complete system. Please refer to our product catalogue or contact your local Fisher & Paykel supplier for further information and assistance.

Fisher & Paykel have a policy of continuous product improvement and reserve the right to alter specifications without notice.



Fisher & Paykel
HEALTHCARE

INTERNATIONAL
AUSTRALIA
UK / IRELAND*
US
FRANCE / BENELUX

25 Carbine Road, PO Box 14-348, Panmure, Auckland, New Zealand. Tel: 64 9 574 0100. Fax: 64 9 574 0158. Email: warmers@tphealthcare.co.nz
36-40 New Street, Ringwood, Victoria 3134, Australia. Tel: 61 3 9879 5022. Fax: 61 3 9879 5232
Unit 16 Cordwallis Park, Clivemont Road, Maidenhead, Berkshire SL6 7BU, UK. Tel: 44 1628 626 136. Fax: 44 1628 626 146. *EU authorised representative.
22982 Alcalde Drive, Suite 101, Laguna Hills CA 92653, USA. Tel: 1 949 470 3900 or 1 800 446 3908. Fax: 1 949 470 3933
10 Avenue du Quebec, SILIC S12-Villebon, 91946 COURTABŒUF CEDEX, France. Tel: 33 164 465 201. Fax: 33 164 465 221

PN 185041292 Rev A Printed June 1998