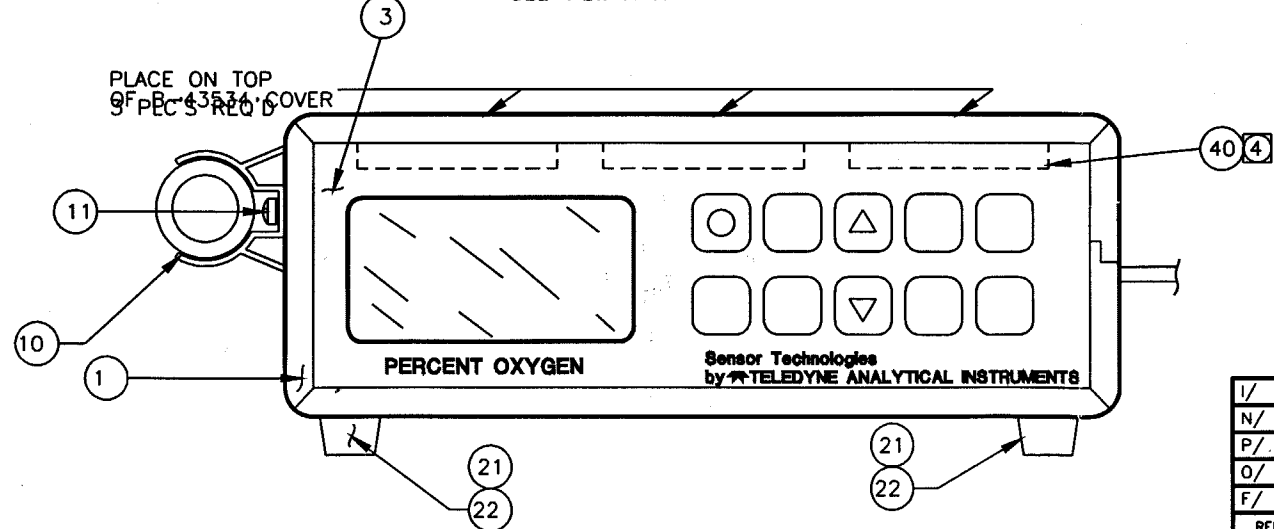
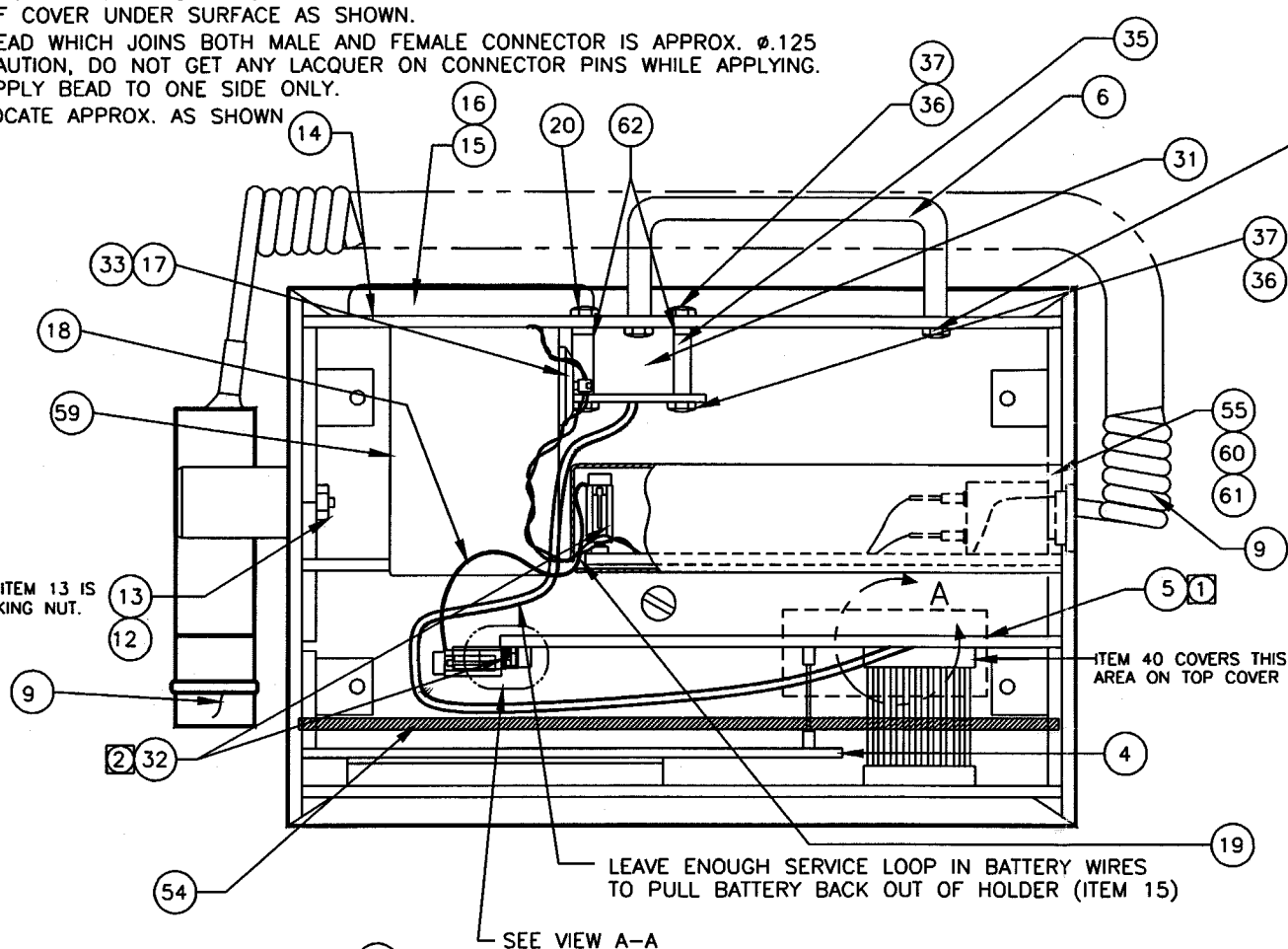


NOTES: UNLESS OTHERWISE SPECIFIED.

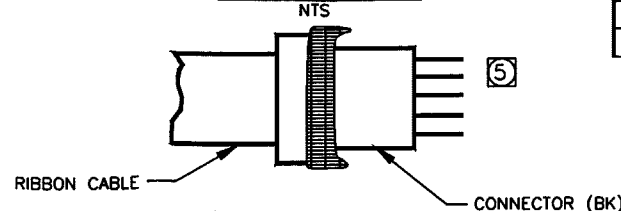
- 1 MAKE SURE THAT UPPER & LOWER EDGES ON PC BDS ARE COVERED WITH MASKING TAPE AS INDICATED IN PC BD SUB-ASSEMBLIES.
- 2 APPLY LACQUER TO JOINTS BETWEEN CABLE & PC BD CONNECTORS. BE CAREFUL NOT TO APPLY LACQUER TO ANY ELECTRICAL CONTACTS POINTS. SEE VIEW A-A
- 3 EXTEND BUZZER WIRES BY SOLDERING AND SLEEVING THE SAME COLOR WIRES TO ALARM LEADS AND SOLDER TO HOLES ON CONTROLLER BD ITEM 5.
- 4 STICK A 4.0 X .75 X .13 THICK FOAM RUBBER PAD ON TOP OF COVER UNDER SURFACE AS SHOWN.
- 5 BEAD WHICH JOINS BOTH MALE AND FEMALE CONNECTOR IS APPROX. ϕ .125 CAUTION, DO NOT GET ANY LACQUER ON CONNECTOR PINS WHILE APPLYING. APPLY BEAD TO ONE SIDE ONLY.
- 6 LOCATE APPROX. AS SHOWN

NOTE: ITEM 13 IS A LOCKING NUT.

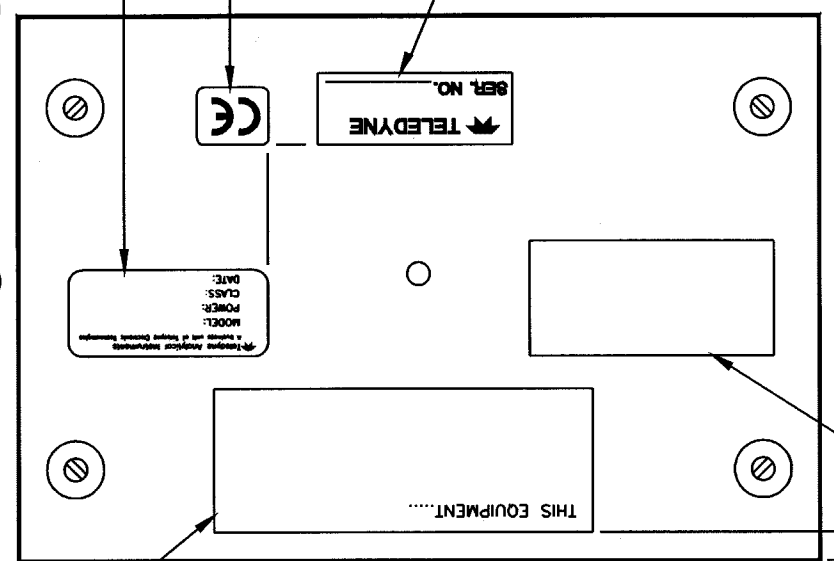
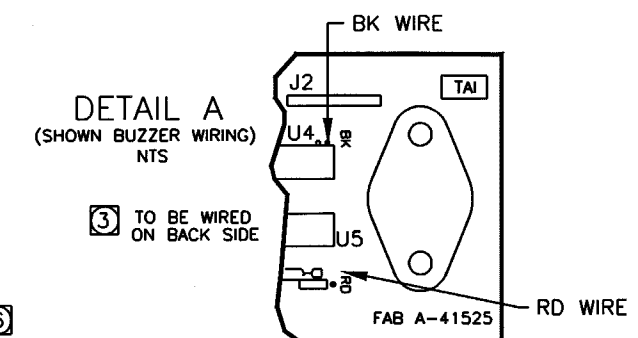
D
C
B
A



VIEW A-A



REVISIONS				
REV	DESCRIPTION	DATE	APP.	REV.
44	INC ECO #96-1013	10/2/96	VMC	VF
45	INC ECO #96-0081	3-3-97	R.N.	VF



BOTTOM VIEW

HISTORY
ECO# 96-1220
3/14/97

QUALITY ASSURANCE
APPROVAL REQUIRED 1

TELEDYNE
ANALYTICAL INSTRUMENTS
FEB 21 2007
DOCUMENT CONTROL
COPY

ITEM	QTY	PART NO.	DESCRIPTION
BILL OF MATERIAL			
DO NOT SCALE DWG			
TOLERANCE UNLESS OTHERWISE SPECIFIED: ANGULAR $\pm 1/2^\circ$			
LINEAR .XX = $\pm .1$.XXX = $\pm .02$ LXXX = $\pm .005$			
SIGNATURES		DATE	TITLE
DRFT: L.GARCES		2/15/96	MODEL TED 200
CHK:			FINAL ASSEMBLY
APPR:			
ENGR:			
S.O.			
REFERENCE		CAD ID 41901A45	
SEE SEPARATE PARTS LIST			DWG NO. C-41901A
			REV 45