

VM3COP38.12 AX/MX300i Revision 2 Case Fitting

Pick the case kit relevant to the Oxygen monitor to be upgraded. The fitting method is identical.

Parts List:

AX300 Revision 2 case kit

MX300 Revision 2 case kit

Part number:

0121216

0121217

Tool List:

Phillips size 0 screw driver

Soldering iron

Solder

Anti-static mat and wrist strap

Kit Contents:

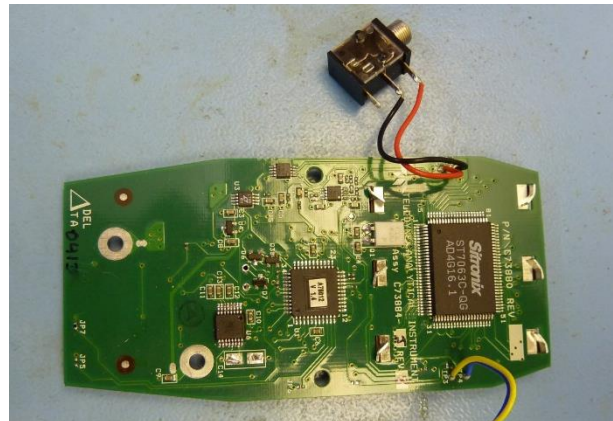
Front case

Rear case (with battery contacts)

Sensor input jack connector

Method:

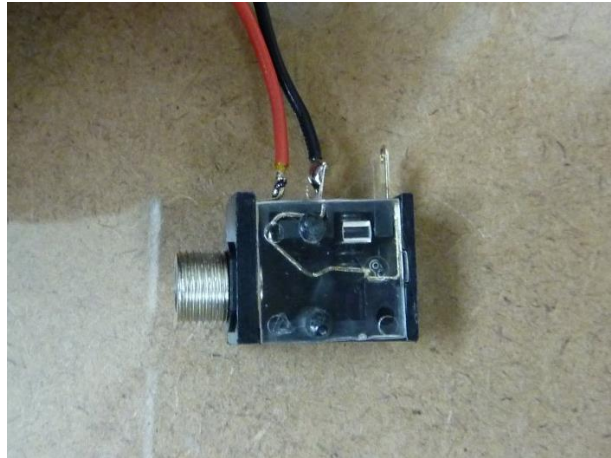
- 1) With anti-static protection in place, remove the PCB from the revision 1 case. Keep the case screws, as these will be reused.



- 2) Remove the rubber keypad, battery door latch and battery door from the revision 1 case. Keep these parts, as this will be reused. The case can be discarded.



- 3) De-solder the revision 1 sensor input connector, leaving the red and black wires attached to the PCB. Discard the revision 1 sensor input connector.



- 4) Solder the revision 2 sensor input connector to the black and red wires.

Black - Tip

Red - Sleeve



- 5) Insert the keypad and battery door latch to the revision 2 case.



- 6) Insert the PCB into the revision 2 case.
- 7) Align the sensor input connector and sensor reading output connector.
- 8) Place the front case onto the rear case, ensuring that the connectors are aligned with the case and that the case seal is correctly inserted into its recess.
- 9) Using the QA procedure, test the AX/MX300i Oxygen monitor.

