

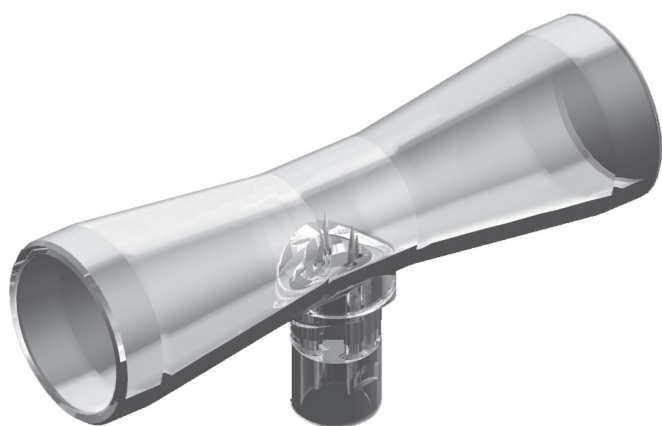


## SpiroTrue Flow Sensors

For flow measurement of gas delivered by anaesthesia systems and ventilators

### SpiroTrue A

Hot-wire anemometric flow sensor



- Compatible to the Dräger Spirolog flow sensor: Part no. **8403735**.
- For use with Dräger: Anemone, Apollo, AV1, Cato, Cicero, Dura, Eva, Evita, Evita 4, Evita XL, Fabius GS, Julian, PM8030, PM8035, PM8050, PM8060, Primus, Savina, Sulla...
- Can be disinfected.
- Supplied in a box of five, each sensor is packed individually in sterilizable packaging.
- Can be sterilized with EtO prior to use. The sensor can be used as long as equipment calibration is possible.

Viamed Part Number: 4310001

### SpiroTrue A (PC)

- As above and autoclavable at 134°C\*, ≥ 100 cycles
- Compatible to the Dräger SpiroLife flow sensor: Part no. **MK 01900**.

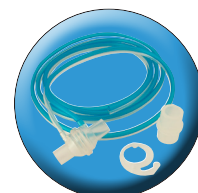
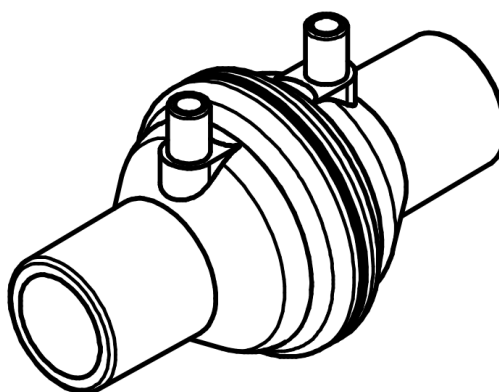
Viamed Part Number: 4310002

### SpiroTrue H

Differential pressure flow sensor for use with Hamilton ventilators

- Compatible to Hamilton Medical **H7400 Accu Tach** flow sensor.
- For use with Hamilton Medical: Aladdin, Amadeus, Arabella, C1, C2, Galileo, H72 VR1, H7200, MR1, Raphael, S1, T1, Veolar...
- SpiroTrue H is a box of six, packaged individually. Each sensor is supplied fitted with 2m dual lumen sensor tubing and also includes an adapter and hook.

Viamed Part Number: 4310003



# VIAMED

**Viamed Limited** · 15 Station Road · Cross Hills  
Keighley · West Yorkshire · BD20 7DT · United Kingdom  
Tel: +44 (0)1535 634 542 Fax: +44 (0)1535 635 582  
Email: [info@viamed.co.uk](mailto:info@viamed.co.uk) Website: [www.viamed.co.uk](http://www.viamed.co.uk)



0191197

Specifications subject to change

Date: 11/17