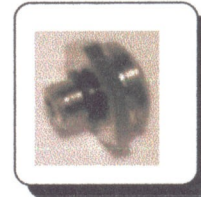


Assembly instructions for Precision Valve 9901-40.

use small strip of ptfе tape
around 9901-38. Screw
9901-38 into 9901-39
put spring 9901-27 into
9901-39.

9901-11
Valve Seating



Grease spindle of 9901-12.

9901-12
Valve Seat



Slot spindle of 9901-12 into
9901-38 through spring
9901-27.

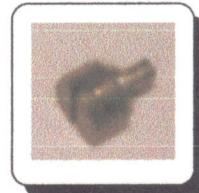
9901-27
Precision Valve Spring



Screw 9901-11 into
9901-39.

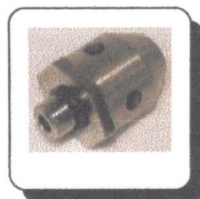
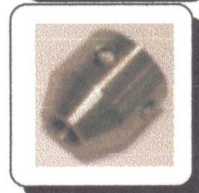
9901-40 is ready to be
calibrated.

9901-38
Precision Valve Adjustable
Screw



Fix 'O' Ring P/N 4701-13 to
9901-11.

9901-39
Precision Valve Body



9901-40
Precision Valve

Calibration Instructions for Precision Valve 9901-40

Attach 9901-40 to test block.

Fill any excess holes with Blanking nuts.

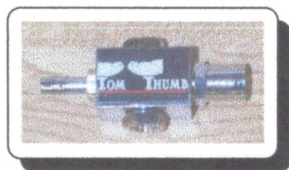
Attach Test block to flowmeter 10 Lpm.
output of test gauge must be open the air.

Lock Tight thread of 9901-38 adjustment screw.

Block output of test gauge with finger to measure pressure valve.

Tighten 9901-38 until gauge reads required reading (As requested by customer).

Affix Label specifying setting.



TomThumb Test Block



Test Manometers

Calibration Instructions for Precision Valve 9901-40

Attach 9901-40 to test block.

Fill any excess holes with Blanking nuts.

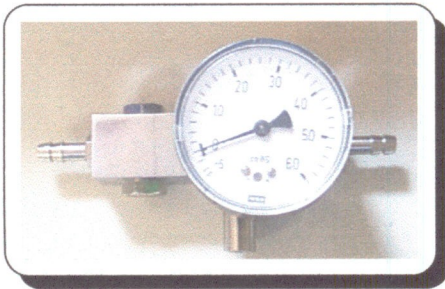
Attach Test block to flowmeter 10 lpm.
output of test gauge must be open the air.

Lock Tight thread of 9901-38 adjustment screw.

Block output of test gauge with finger to measure pressure valve.

Tighten 9901-38 until gauge reads required reading (As requested by customer).

Affix Label specifying setting.



TomThumb Test Block