

respiratory



2-in-1 Muffled Adapters

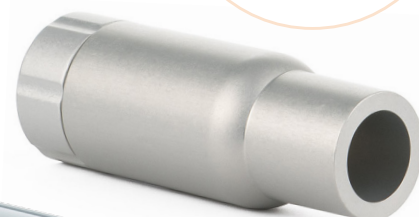
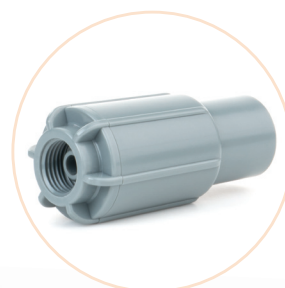
For use in high flow applications, dampens noise, minimising patient stimulation during use



0320466 / 0320468
2-in-1 Adapter - Plastic
2-year life



0320470
2-in-1 Adapter - Metal
Extended long-life



22 mm Large Bore

15 mm Tubing

The 2-in-1 Muffled Adapters are designed specifically for use with multiple sizes of commonly used medical tubing.

Providing users with the option to connect 22 mm large bore or 15 mm small bore tubing to any device with a male DISS fitting such as common flow meters.

It is specially designed for High Flow applications and dampens noise to minimise patient stimulation during use.

Part No.	Description	Pack Qty
0320466	2-in-1 Muffled Adapter (Plastic)	1
0320468	2-in-1 Muffled Adapter (Plastic)	50
0320470	2-in-1 Muffled Adapter (Metal)	1



Viamed Limited · 15 Station Road · Cross Hills
Keighley · West Yorkshire · BD20 7DT · United Kingdom
Tel: +44 (0)1535 634 542 Fax: +44 (0)1535 635 582
Email: info@viamed.co.uk Website: www.viamed.co.uk

Specifications subject to change

Part Number: 0191232
Date: 10/24

