



body-jet® evo

Efficient. Versatile. Intuitive.

The premium class of jet-assisted fat-transfer and body-contouring

Ordering Information

Description	REF	Purchase Units
body-jet® evo	500000-7	1 device
body-jet® evo Applicator	570001	1 box = 5 pcs
Technical details		
Dimensions in cm:	54 (W) x 60 (D) x 178 (H)	
Weight in kg:	65	
Power supply:	230 VAC, 6 A, 50 Hz	
Safety class according IEC 60601-1:	I	
OP applicator safety class:	BF	
Approval certificate:	CE 0482	
Device class acc. to Council Directive 93/42/EEC	II a:	

body-jet® is a registered trademark owned by human med AG, Germany.
body-jet® technology is protected by U.S., European and other patents.
© Copyrights human med AG. 09/2012 REF 9001038

About human med

An innovator and leader in water-jet surgery, human med is the world’s first and foremost manufacturer of water-jet assisted aesthetic devices. Building on a long history of success in the fields of general surgery, urology and neurosurgery, where gentle water-jet tissue dissection is essential, in 2004 human med turned its vision to the aesthetics field. The launch of the companys innovative body-jet®, a water-jet based infiltration, irrigation and aspiration system for removing unwanted body fat has helped to usher in a fundamentally new approach to lipoplasty and natural fat harvesting..



human med AG
Wilhelm-Hennemann-Str. 9
19061 Schwerin, Germany
Tel: +49 (0) 385 / 3 95 70 -0
Fax: +49 (0) 385 / 3 95 70 -10
info@humanmed.com



body-jet® evo

Premium Fat-Transfer and Body-Contouring



Premium Fat-Transfer and Body-Contouring

New standards in fat-transfer and body-contouring

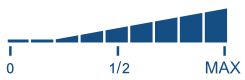
The innovative body-jet® evo represents the 2nd generation of waterjet-assisted-liposuction devices (WAL). With the help of a fan-shaped, pulsating water beam the fat can be gently separated away from the tissue and evacuated at the same time. Thanks to a novel drive system for the body-jet® evo the intensity and effectiveness of the water beam can be adjusted to the user needs, ensuring a rather pain-free treatment. The surrounding connective tissue, nerves and vascular structures remain nearly undamaged resulting in higher patient safety, faster healing and less pain and bruising. Moreover, the gentle effect of the water beam allows an easy and effective fatttransfer especially of mid-size and bigger fat volume. without the need for time consuming processing which can lead to cell damage. The body-jet® evo comprises a modern and standardized concept of operation with various presettings parameters for liposuction and fat transfer as well as adjusting to the individual needs of a surgeon.



Introducing AquaShape® human med AG will increase awareness for its advanced fat harvesting and fat transfer technique. All various fields of application such as breast augmentation, anti-aging and body shaping will be advertised. In addition to the website (<http://www.aquashape.com>) it's online presence will be extended in all relevant online and social media channels. A patient flyer completes the consultation process for potential customers. With these integrated marketing activities human med AG is able to support all users of the water-jet technology.

*AquaShape® is the „patient brand“ that human med AG uses to communicate with potential patients and the general public..

Features of the body-jet® evo



Optimized pressure and flow parameters for fat transfer by easy program presetting

- *higher quality of the harvested fat*
- *pre-set LipoCollection mode*



Intuitive user interface with touch-screen

- *easy handling*
- *upgradable platfform for further applications*



Integrated help function

- *reduced failure risk*
- *is available at any time*



High-quality manufacture with improved handling

- *certified medical engineering Made in Germany*
- *designed for easy transport and safe standing*

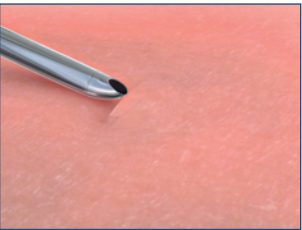


Adjustable pulse effects

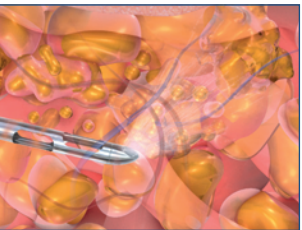
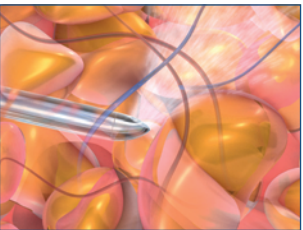
- *shorter surgery time*
- *less pain for the patient*
- *more efficient workflow*



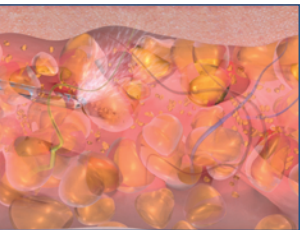
Phases of WAL (Waterjet-Assisted Liposuction)



Phase 1:
Infiltration of the tissue, using standard tumescent solution
About 70% less infiltration volume needed and less exposure time.

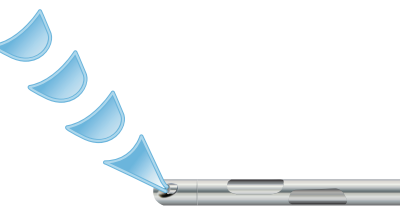


Phase 2:
Simultaneous irrigation and suction
The fan-shaped water-jet flushes out small clusters of fat tissue. Waterjet moves easily through the toughest tissues aleiviating the need for aggressive cannula movement.



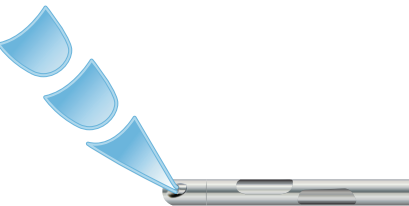
Result
Low colateral damage to surrounding tissues..

Pulse effects



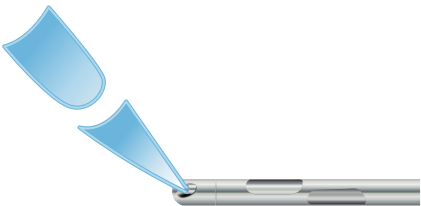
SHORT
short, quick pulses for easy infiltration of a low liquid volume

- very effective for liposuction, allows easy working and guiding of the cannulae, especially in fibrotic tissue, for better contouring with low pain induction
- easy to learn and to perform for skilled and unskilled users



MEDIUM
basic pulsation mode (1st Generation)

- for clinically proven results



LONG
Long pulsation mode with short breaks, for quick infiltration of larger liquid volumes

- Faster infiltration, designed for quick tissue expansion.

Fat management



1st Phase = Pre-Infiltration (low volume)
2nd Phase =water-jet assisted liposuction with direct fat collection using LipoCollector® or FillerCollector®
3rd Phase =Extraction and direct re-injection of the fat into the recipient areas (no centrifugation or processing required)