

ALL SPECIFICATIONS APPLY AT 1013 MILLBAR, 25°C, DRY AMBIENT AIR.

REV.	DCO'S AFFECTING THIS DRAWING	DATE	APPROVED
A	INITIAL REL.# 2171	10/25/05	CA

1. Output:

25mV to 35mV, dry ambient air

2. Operating Temperature:

10° C to 45° C

3. Maximum Storage Temperature:

-20° C to 50° C

(Recommended: 5° C to 30° C)

4. Electrical Connector:

gold plated slip rings

5. Range of Measurement (Full Scale):

0 to 100% oxygen

6. Zero Offset:

Less than or equal to 0.20 mV when exposed to
100% nitrogen, applied for 5 minutes

7. 90% Response Time:

Less than or equal to 17 seconds
@ flow range of 0.2 to 2.0 L/min

8. Linearity:

Within $\pm 2.0\%$ of full scale
applied for 5 min.

9. Stability:

Less than 1% of full scale over an 8 hour period
at constant temperature, pressure, and humidity.
(between 20% - 100% oxygen)

10. Interference:

Less than 0.3% of full scale in presence of 80% Nitrous oxide
Less than 0.3% of full scale in presence of 7.5% Halothane
Less than 0.3% of full scale in presence of 7.5% Isoflurane
Less than 0.3% of full scale in presence of 7.5% Enflurane
Less than 0.3% of full scale in presence of 7.5% Sevoflurane
Less than 0.3% of full scale in presence of 20% Desflurane
Less than 0.3% of full scale in presence of 10% Carbon Dioxide

11. Temperature Compensation:

NTC

12. Expected Life:

>500,000% oxygen hours under normal operating conditions

13. Humidity:

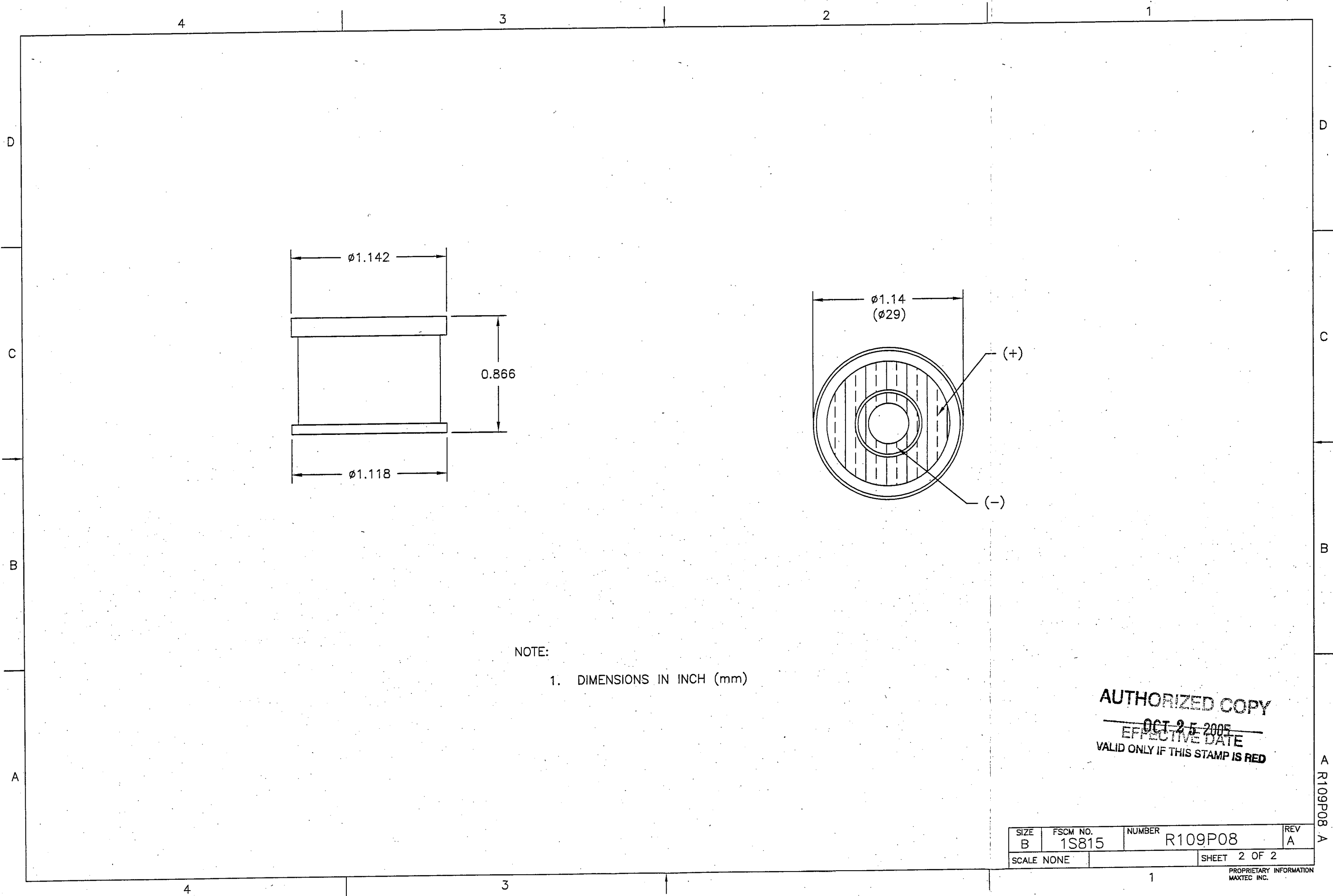
5% to 95% Relative Humidity non-condensing

14. Warm-up Time:

Less than 30 minutes, after replacement of sensor.

AUTHORIZED COPY
OCT 25 2005
EFFECTIVE DATE
VALID ONLY IF THIS STAMP IS RED

UNLESS OTHERWISE SPECIFIED DIMENSIONS ARE IN INCHES AND PER ANSI Y14.5-1982		maxtec® SALT LAKE CITY, UTAH 84107	
.XX = ± 0.1 .XXX = ± 0.005 .XXXX = ± 0.002	ANGLES $\pm 1'30''$	SPECIFICATION, MAX-43 OXYGEN SENSOR	
PREP Kevin Durst 10-25-05	CHKR 11/05/04	SIZE B	FSCM NO. 1S815
MFG 14 Oct 2005	ENG 13 Oct 2005	NUMBER R109P08	REV A
SCALE: 1:1		SHEET 1 OF 1	



NOTE:

1. DIMENSIONS IN INCH (mm)

AUTHORIZED COPY
OCT 25 2005
EFFECTIVE DATE
VALID ONLY IF THIS STAMP IS RED

SIZE	FSCM NO.	NUMBER	REV
B	1S815	R109P08	A
SCALE NONE		SHEET 2 OF 2	

PROPRIETARY INFORMATION
MAXTEC INC.

A R109P08 A