

ALL PRODUCT SPECIFICATIONS ARE APPLICABLE AT STANDARD CONDITIONS:
1013 MILLIBAR, 25° C DRY AIR, AND 600 OHM LOAD ACROSS THE SENSOR TERMINALS.

REV	DCO'S AFFECTING THIS DRAWING	DATE	APPROVED
A	INITIAL REL. # 724	10/29/99	D.S.
D	DCO # 3808 REVISED STORAGE TEMPERATURE	8/23/11	D.L.

1. Output:

17.0 ± 3.0 mV
2. Operation:

1. Temperature: 0 to 40° C

2. Ambient pressure: 600 – 1750 millibar

3. Relative Humidity: Up to 100% Rh
(Condensing atmosphere over several hours)
3. Storage Temperature Range:

-20 to 50° C

5 to 30° C Recommended
4. Range of Measurement (Full Scale):

0 to 100% oxygen
5. Zero Offset:

Less than 0.20 mV when exposed to 100% nitrogen for 5 minutes.
6. 90% Response Time:

Less than or equal to 13 seconds
7. Linearity:

<3.0% of full scale
8. Stability:

Less than 1% of full scale over an 8 hour period between 20% and 100% Oxygen
9. Repeatability:

±1% volume O₂ at 100% O₂ applied for 5 minutes
10. Interference:

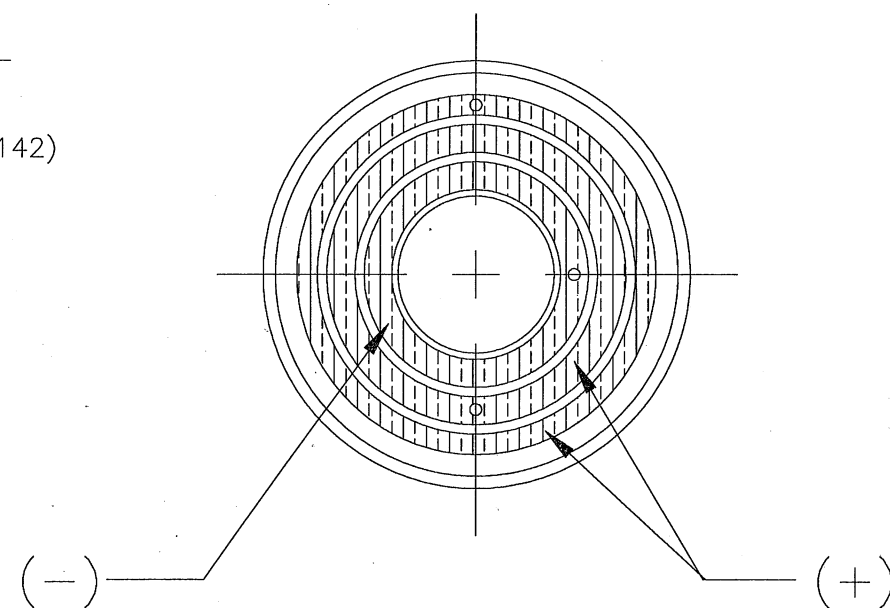
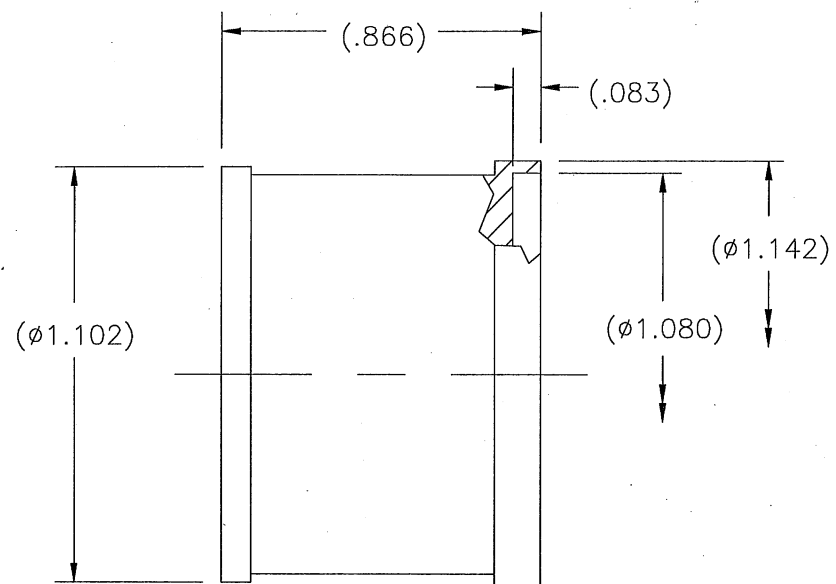
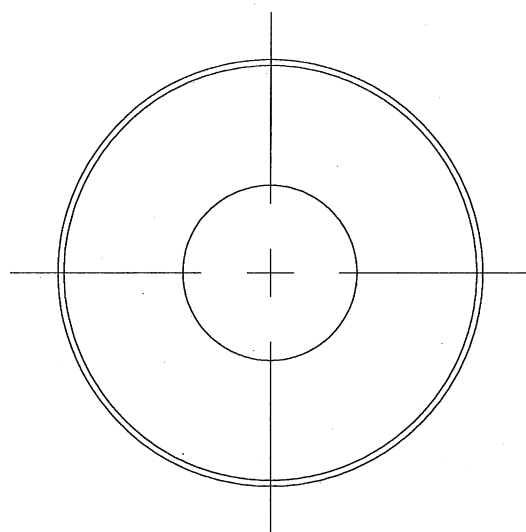
Less than 0.5% O₂ response to:
10.0% CO₂ balance N₂
80.0% N₂O balance N₂
7.5% Halothane balance N₂
7.5% Isoflurane balance N₂
7.5% Enflurane balance N₂
9.0% Sevoflurane balance N₂
20.0% Desflurane balance N₂
11. Nominal Sensor Life

500,000% oxygen hours
12. Warm-up Time:

Less than 30 minutes after replacement of sensor.
13. Electrical Interface:

Printed Circuit Board
Center contact negative
Outer contacts independent and postive

		UNLESS OTHERWISE SPECIFIED DIMENSIONS ARE IN INCHES AND PER ANSI Y14.5-1982		maxtec™ SALT LAKE CITY, UTAH 84119			
		.XX = ±.01 .XXX = ±.005 .XXXX = ±.002	ANGLES ±1°30'	SPECIFICATION, MAX-11 OXYGEN SENSOR			
QA T. LAVERY	8/15/11	PREP E. CUTLER	10/28/96				
MFG E. MEADS	8/15/11	CHKR D. SANDERSON	10/28/96	SIZE B	FSCM NO. 1S815	NUMBER R113P15	REV D
		ENG C.CINDRICH	8/8/11	SCALE NONE		SHEET 1 OF 2	



NOTES UNLESS OTHERWISE SPECIFIED

1. DIMENSIONS ARE FOR AN UNLABELED SENSOR.

SIZE B	FSCM NO. 1S815	NUMBER R113P15	REV D
SCALE NONE		SHEET 2 OF 2	

PROPRIETARY INFORMATION
MAXTEC

R113P15 D