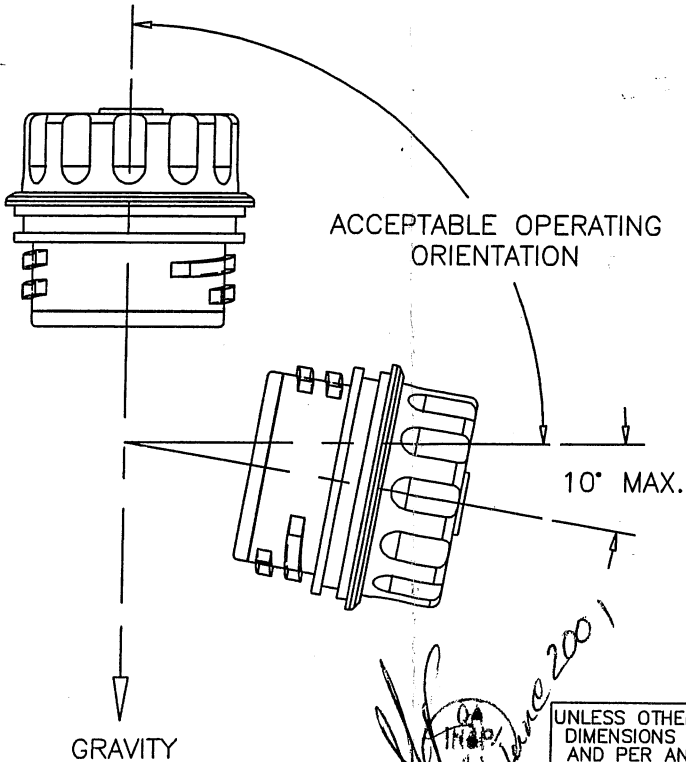



REV	DCO'S AFFECTING THIS DRAWING	DATE	APPROVED
A	INITIAL REL. #747	11/20/96	B.H.
F	DCO # 1726 UPDATED OUTPUT VOLTAGE (NOTE 1)	14 JUN-2001	ALB

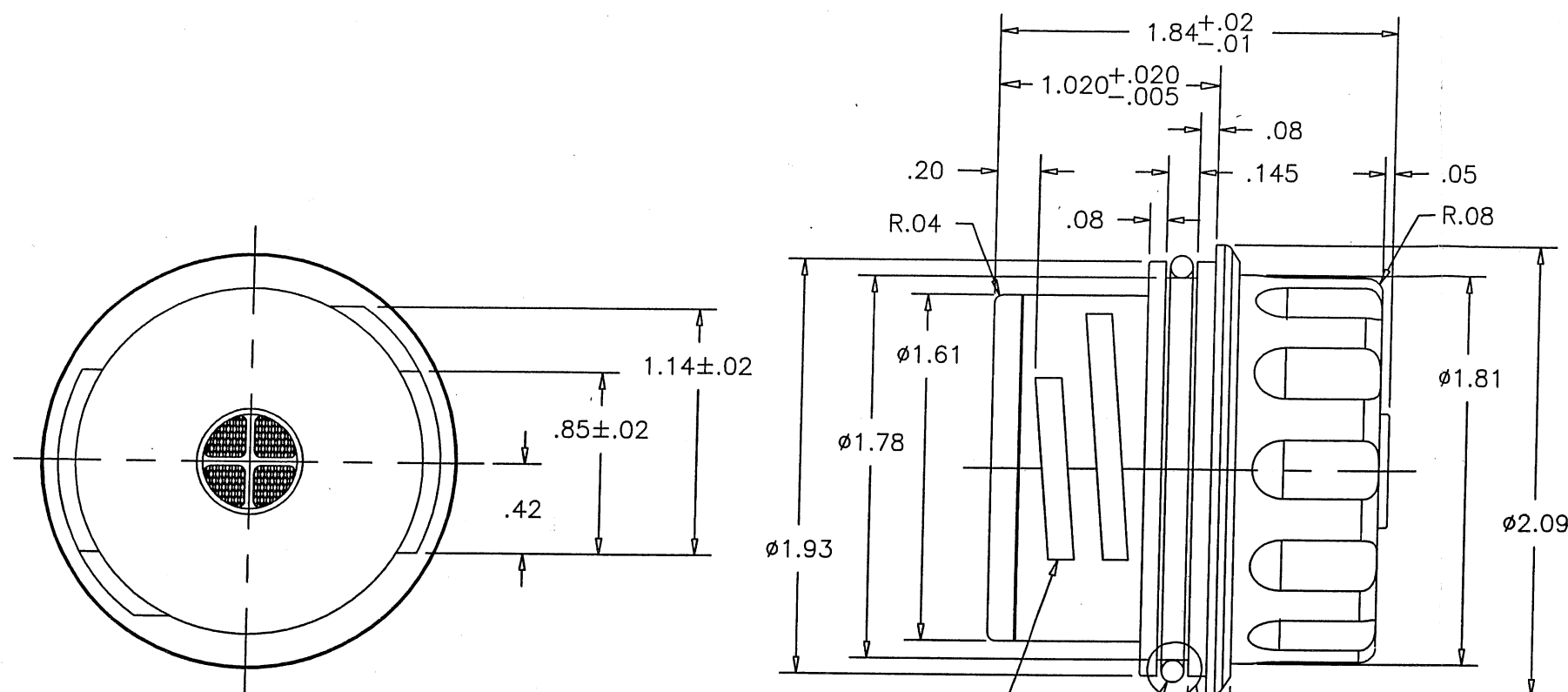
- OUTPUT:
8.0mV TO 12.0mV IN AMBIENT AIR AT 760 TORR PRESSURE,
23±2°C
- OPERATING CONDITIONS:
TEMPERATURE: 10° TO 40° C
HUMIDITY: 10% TO 95% R.H., NONCONDENSING
PRESSURE: 500 TO 800 TORR
DIFFERENTIAL PRESSURE: 90 TORR MAX.
- STORAGE CONDITIONS:
TEMPERATURE: -15° TO 50° C
HUMIDITY: 10% TO 95% R.H., NONCONDENSING
PRESSURE: 500 TO 800 TORR
- TRANSPORT CONDITIONS:
TEMPERATURE: -15° TO 50° C
HUMIDITY: 10% TO 95% R.H., NONCONDENSING
PRESSURE: 350 TORR FOR UP TO 24 HOURS
- RANGE OF MEASUREMENT (FULL SCALE):
0 TO 100% OXYGEN
- ZERO OFFSET:
LESS THAN 0.15mV
- RESPONSE TIME:
0 TO 90% OF CHANGE IN 15 SECONDS OR LESS AT 23±2°C
- LINEARITY:
WITHIN ±2% OF FULL SCALE

- STABILITY:
SPAN DRIFT: LESS THAN OR = ±0.5% OF FULL SCALE PER 24 HOURS
UNDER CONSTANT ENVIRONMENTAL CONDITIONS
ZERO DRIFT: LESS THAN OR = ±0.5% OF FULL SCALE PER MONTH
UNDER CONSTANT ENVIRONMENTAL CONDITIONS
- INTERFERENCE:
LESS THAN 1% OF FULL SCALE IN PRESENCE ON NITROUS OXIDE,
CARBON DIOXIDE AND HELIUM
- TEMPERATURE EFFECTS:
LESS THAN ±1.5% OF FULL SCALE ERROR OVER OPERATING
TEMPERATURE RANGE.
- LIFE:
>900,000% OXYGEN HOURS
- ORIENTATION:
SPECIFICATIONS ARE VALID FOR INSTALLATIONS WHERE THE
SENSING AREA IS MOUNTED EITHER HORIZONTALLY FACING
DOWNWARD OR VERTICALLY WITHIN 10° MAX. (SEE DIAGRAM BELOW)



		UNLESS OTHERWISE SPECIFIED DIMENSIONS ARE IN INCHES AND PER ANSI Y14.5-1982		maxtec™ SALT LAKE CITY, UTAH 84107					
		.XX = ±.01 .XXX = ±.005 .XXXX = ±.002		ANGLE ±1°30'		SPECIFICATIONS MAX-10 OXYGEN SENSOR			
QA G. ROTH	5/29/01	PREP E. CUTLER	11/8/96						
MFG E. MEADS	5/30/01	CHKR B. HAMATAKE	11/20/96	SIZE B	FSCM NO. 1S815	NUMBER R112P15	REV F		
		ENG D. GOETZ	5/29/01	SCALE NONE		SHEET 1 OF 2			

R112P15 F

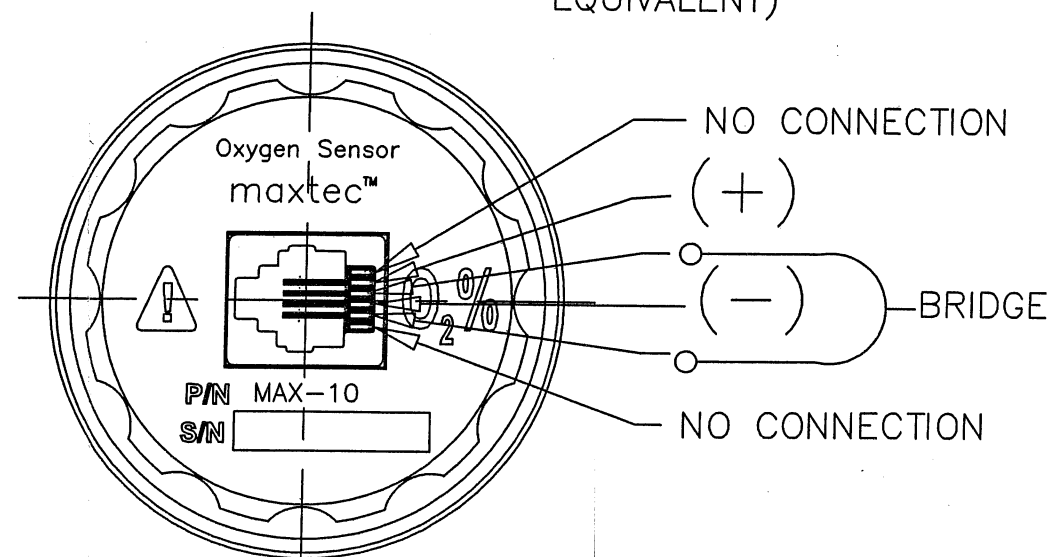


MODIFIED DOUBLE THREAD
0.50 INCH LEAD, 0.25 INCH PITCH, 0.118 CREST WIDTH
1.772 MAJOR DIAMETER
THREAD ROOT SAME AS BODY (ø1.61)

O-RING, -132 SILICONE
40 DUROMETER, COMPOUND S540

R.015 MAX
GROOVE AND SHOULDER

MODULAR JACK 6P4C
(AMP # 520258-2 OR
EQUIVALENT)



WIRING SCHEMATIC

NOTES: UNLESS OTHERWISE SPECIFIED

1. MATERIAL: BLACK OR BLUE ABS.
2. FINISH: NONE
3. SURFACE: BETTER THAN 125
4. TOLERANCES: .X ±0.02, .XX ±0.01, .XXX ±0.005
5. DRAWING SHOWS SQUARE THREAD ACCEPTABLE ON MACHINED PARTS.
MOLDED PARTS WILL HAVE DRAFTED THREADS ACCORDING TO MOLD MAKERS SUGGESTIONS.
6. PACKAGING: PREFERRED THREADED PLASTIC SHELL. ACCEPTABLE ALSO SEALED POLY BAG (WITH AIR HOLE).

SIZE	FSCM NO.	NUMBER	REV
B	1S815	R112P15	F
SCALE	NONE	SHEET 2 OF 2	

PROPRIETARY INFORMATION
MAXTEC INC.

R112P15F