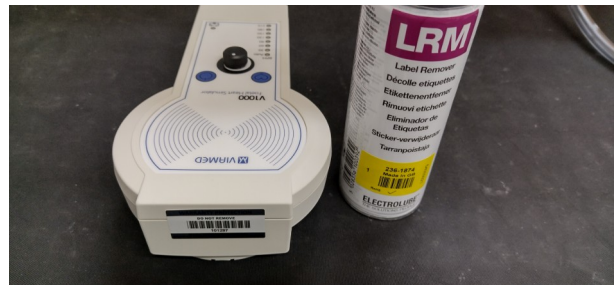


V1000 SERVICE PROCEDURE		VM3COP55.05
Date 17-08-23	Revision date 05-09-23	Issue 1.03

Items required	Part number (if applicable)
PH2 Phillips screwdriver	
Label remover	0050130
Transducer interface cushion	1430309
Calibrated sticker	1430323
Warranty protection sticker	1430325
Double sided tape 10mm	1430328
Tamper evident seal	1430326
Clinell Universal Wipes	9950503

Before attempting the service power up the V1000.
 Do all the LEDs work ?
 Do the ON/OFF and Frequency buttons work ?
 Does the Intensity dial work ? Can you hear the speaker getting louder/quieter?

Remove warranty protection sticker and clean residue with label remover.



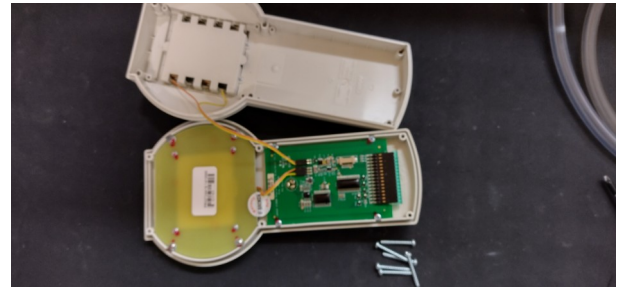
Ensure that no traces of label or residue remain.



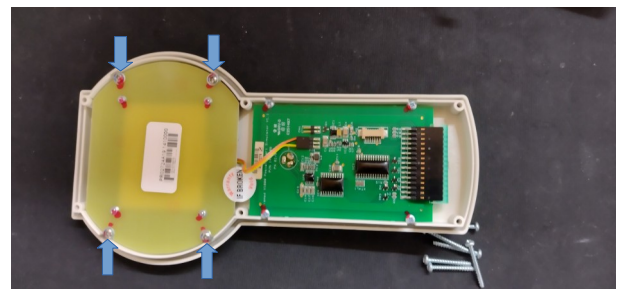
Using the Phillips screwdriver, remove the six screws that hold the two halves of the instrument case together.



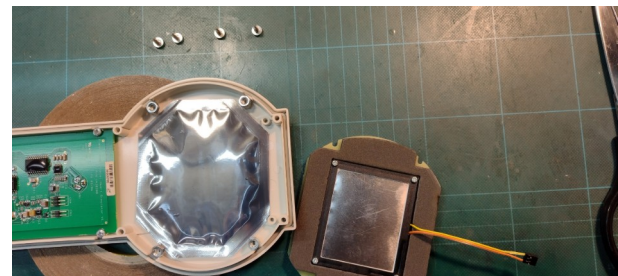
Split the two halves. Take care, the power lead will be connected between the halves. Make a note of how the two leads are connected.



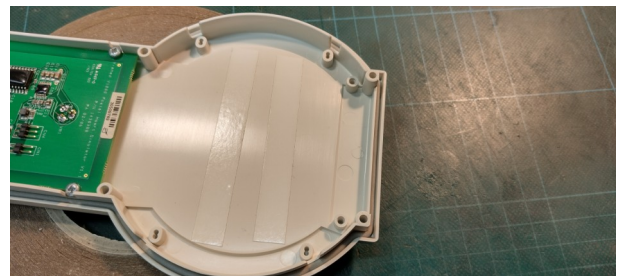
Unplug the power lead and move away the lower half.
Remove the four screws that hold the transducer assembly in place.
Unplug the transducer lead.



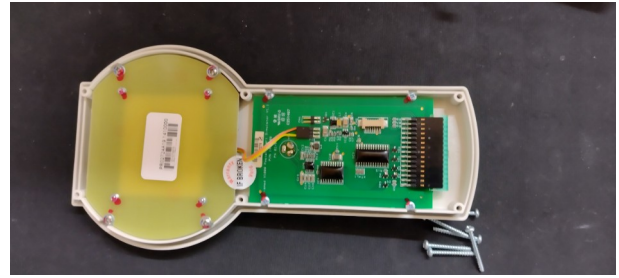
Remove the transducer assembly.
Note the position of the four M4 nuts used as spacers under the transducer assembly.



Peel off the old transducer interface cushion.
Replace the double sided tape if necessary.
Affix a new transducer interface cushion in the space between the support posts.



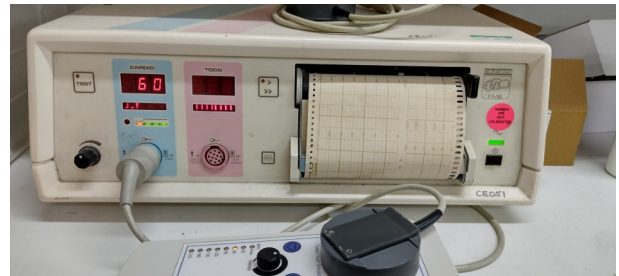
Carefully place the transducer assembly on the four M4 nut spacers and hold in place with the four screws and washers.
The four screw will need a new dab of red tamper evident seal on the heads.



Reconnect the two leads as noted before.
Close the two halves taking care not to trap any wires.
Do not fit the six case screws yet.



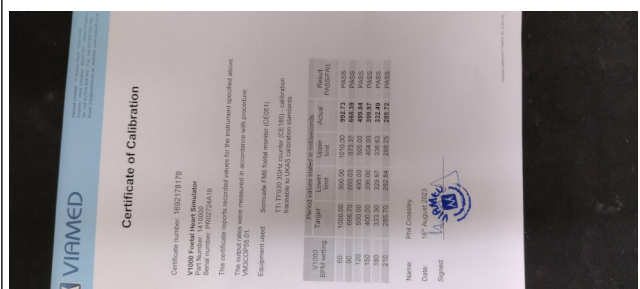
Use the Sonicaid CE051 to confirm the V1000 is working and has a good output.
With the V1000 set at half intensity the Sonicaid should find a good pulse from 60 to 210 bpm (30 is too low for the Sonicaid to function).
With the Sonicaid set at half volume you should hear the pulse clearly from its speaker.
Use the Auto BPM function on the V1000 to run through the range whilst observing the Sonicaid.



Calibration Check

Follow Foetal heart simulator BPM accuracy test **VM3COP55.01**

VM3COP55.01 produces a calibration certificate as shown.
It should be signed and stamped on the signature with a Viamed stamp.
A digital copy is saved in [U:\\Calibration Certificates\\V1000 calibration certificates\\PDF\\](#)
A digital copy is also uploaded to Intrastats\\Stock\\Calibration Certificates\\. Each calibration certificate number generated here requires the certificate to be uploaded later.



Replace the six screws in the instrument case.
Check the device turns on/off.
Clean the unit thoroughly with Clinell wipes.

Affix a new Calibrated sticker as shown.
Ensure that this is initialled and with today's date.

Affix a new Warranty Protection sticker as shown. Make a note of the unique number.
The number is recorded on the QA form that is found on the SRN page for a customers device.
It is also found through Intrastats\Stock\QA Stock\ for a new build.

