

## AX300 Oxygen Analyser & MX300 Oxygen Monitor

### Summary procedure for upgrading the casing & oxygen sensor input connector.

Part required:

Either

1 x 0121216 AX300 Case Upgrade Kit Rev.2

or

1 x 0121217 MX300 Case Upgrade Kit Rev.2

Each kit comprises of:

1 x Front panel Rev. 2, AX300 = 0100174, MX300 = 0100175

1 x Rear panel Rev. 2, 0121215

1 x Oxygen sensor input connector Rev.2, 0131214

#### Tools required:

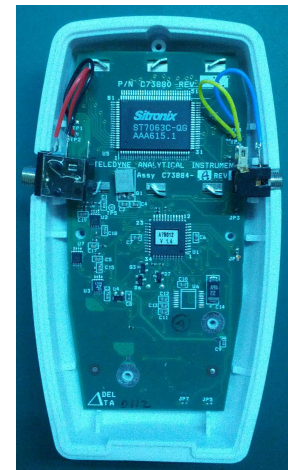
Anti-static workstation.

Philips Size 0 screwdriver.

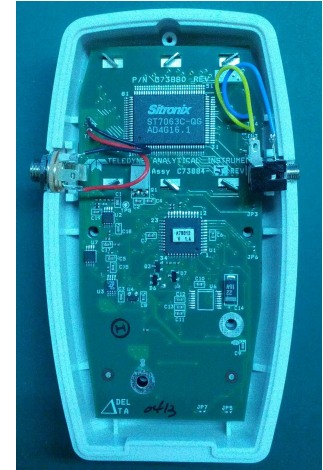
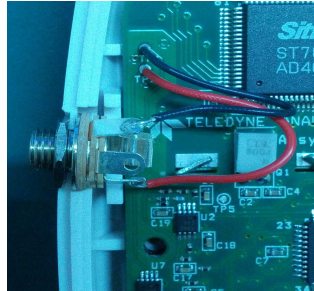
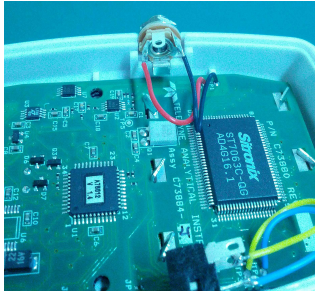
Soldering iron.

At an anti-static workstation:

- 1) Remove the battery cover and the three batteries.
- 2) Slide off and remove the 'V' mount adapter.
- 3) Remove the four screws from within the battery compartment and the single long screw located at the top of the rear panel.
- 4) Carefully remove the rear panel; the PCB assembly can then be removed.  
NOTE: Put the battery lock aside – to be used with the Rev.2 rear panel.
- 5) Unsolder the red and black sensor input wires from the existing connector. Then solder the wires to the Rev. 2 connector. For connections see the images in step 7)
- 6) Transfer the keypad membrane to the Rev. 2 front panel.



- 7) Position the PCB on top of the keypad membrane and fasten the oxygen sensor input connector to the front casing. Reposition the output connector.



- 8) Fit the Rev. 2 rear panel together with the existing battery door lock. Then refit the rear panel screws, 'V' mount adapter, batteries and battery cover.
- 9) Carry out functional test, testing all buttons and functions. Carry out calibration procedure in air and/or 100% oxygen.