

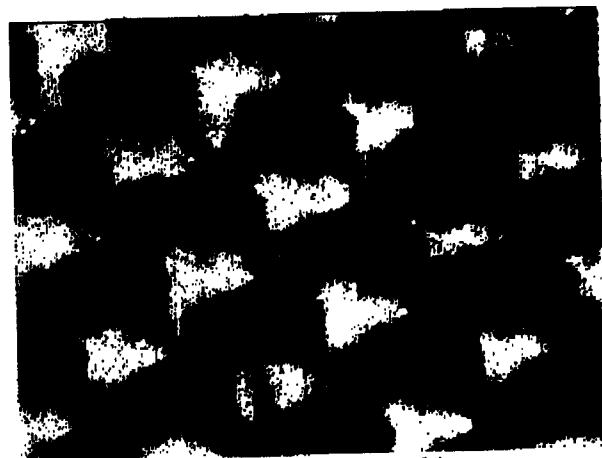
3M Personal Care & Related Products Division

Microreplicated Mechanical Closure System

3M™ PSA coated Mechanical Closure - KHK0003 Levelwound



Levelwound Material



CS600 Hook Profile

GENERAL INFORMATION:

A high quality mechanical closure system for diaper applications

FEATURES	ADVANTAGES	BENEFITS
<ul style="list-style-type: none"> Mechanical fastening system New generation hook profile 	<ul style="list-style-type: none"> Enhanced performance Improved balance of peel, shear and immediate bonding properties. Consistent application. 	<ul style="list-style-type: none"> No operator retraining Secure, sustained closure with immediately perceived quickstick. Minimal machine setup

Typical Product Characteristics (not intended for specification purposes!)

Composition:
Total Caliper

Polypropylene
415 µm

135° Adhesion to 3M Test-PE
Tensile Strength, MD

TM-3132
PCTM-3200

6.0 N/25 mm
50.0 N/25 mm

Hook Performance against 3M Loops

- EKL:**
T-Peel Adhesion to Loop EKL-1120
Dynamic Shear to Loop EKL-1120
- EBL:**
T-Peel Adhesion to Loop Soft-EBL-1317
Dynamic Shear to Loop Soft-EBL-1317

PCTM-5348 (Avg. Peak) 3.5 N/25 mm
PCTM-5339 10.0 N/cm²

PCTM-5348 (Max. Peak) 8.0 N/25 mm
PCTM-5339 13.0 N/cm²