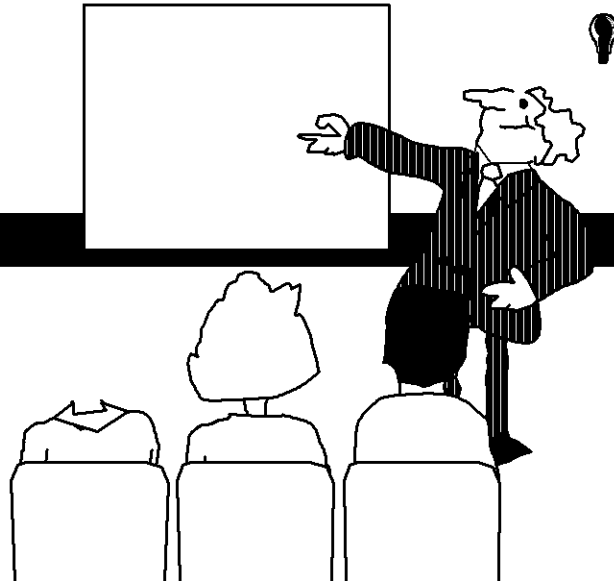


Production & Repairs

Non-conforming Product



Mission Statement

- The aim of this presentation is to achieve a cohesive action plan for the identification and elimination of problems arising through the Production and Repair department. Where identified, preventive actions are to be implemented to assist in the mission.

Team Members

- Leader: K.J. Rush
- Recorder: K.J. Rush
- Facilitator:
- Additional Team Members: M.F. Green

Project Status

| | Type period | Type period | Type period | Type period |
|-----------|-------------|-------------|-------------|-------------|
| Type task | | | | |
| Type task | | | | |
| Type task | | | | |
| Type task | | | | |
| Type task | | | | |

Diagnostic Journey

*The Following are the Main Steps to
be taken*

towards achieving completion

Analyze Symptoms

I The "Vital Few"

II Formulate Causal Theories

IV Test Theories

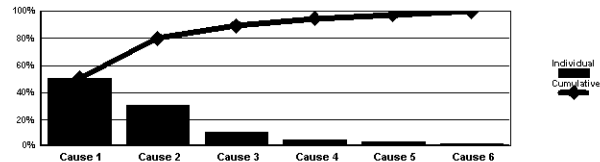
V Identify Root Cause(s)

Analysis of Symptoms

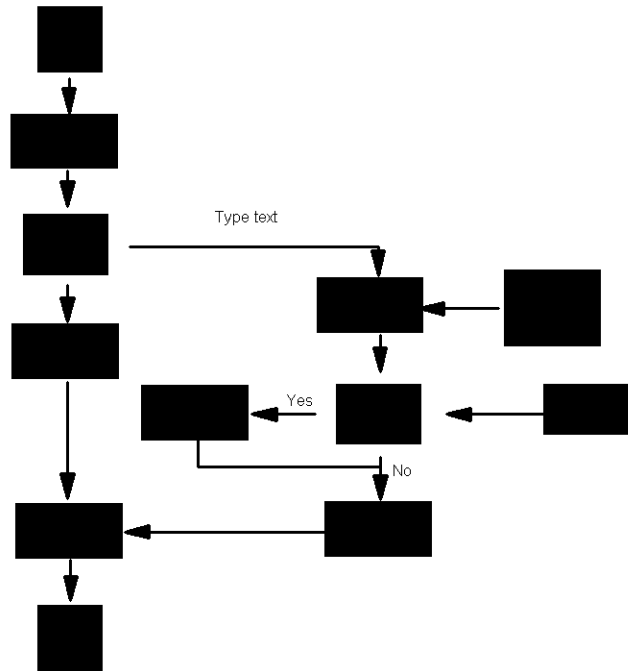
- Click here to identify symptoms and define key terms

The Vital Few

[Click here to create Pareto chart](#)



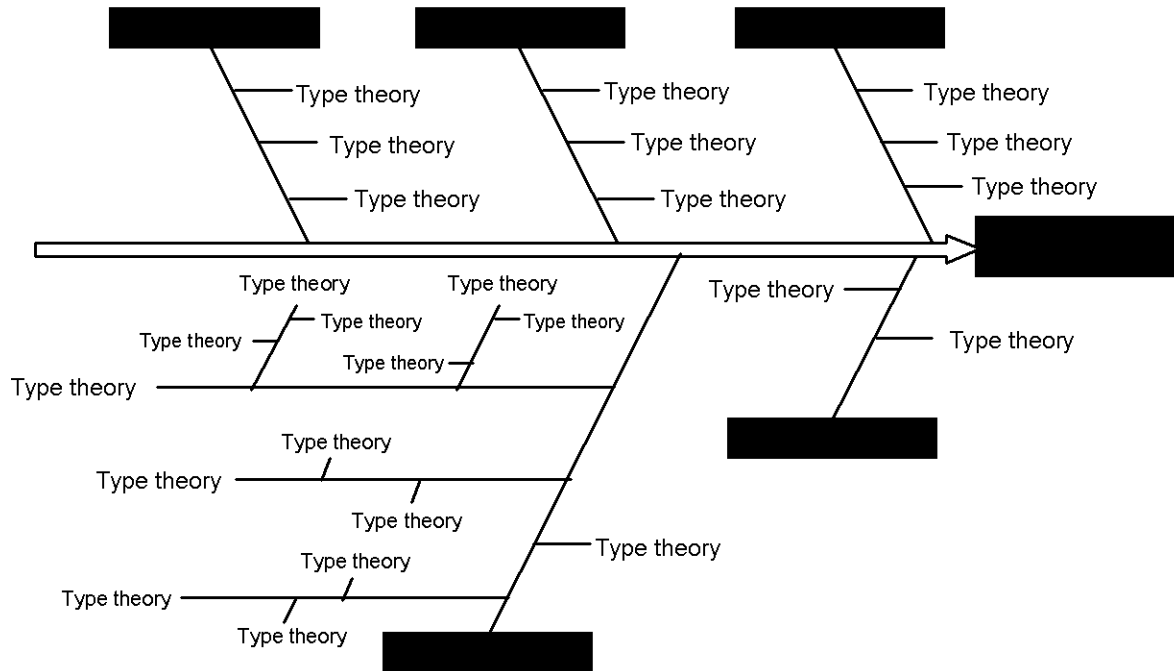
Current Process



Revisit the Mission

- Click here to revisit the original mission after your analysis of the symptoms

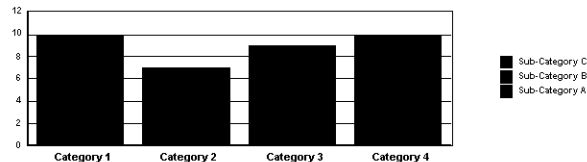
Formulation of Theories



Theory Test Summary

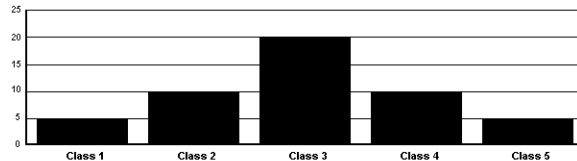
Click here to summarize the main point of the chart

Click here to create chart to test causal theory



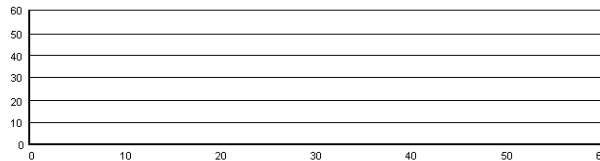
Click here to summarize the main point of the histogram

Click here to create histogram to test causal theory



Click here to summarize main point of scatter chart

Click here to create scatter chart to test causal theory



Root Cause

- Click here to list the root causes of the quality problem

The Remedy

*The Following are the Main Steps to
be taken*

towards agreeing the Remedy

- I Evaluate Alternatives
- II Design the Remedy
- III Design Controls
- IV Prove Effectiveness
- V Implement

Possible Remedies

- [Click here to list possible remedies](#)

Criteria for the Remedy

- Click here to list the criteria to evaluate alternate remedies

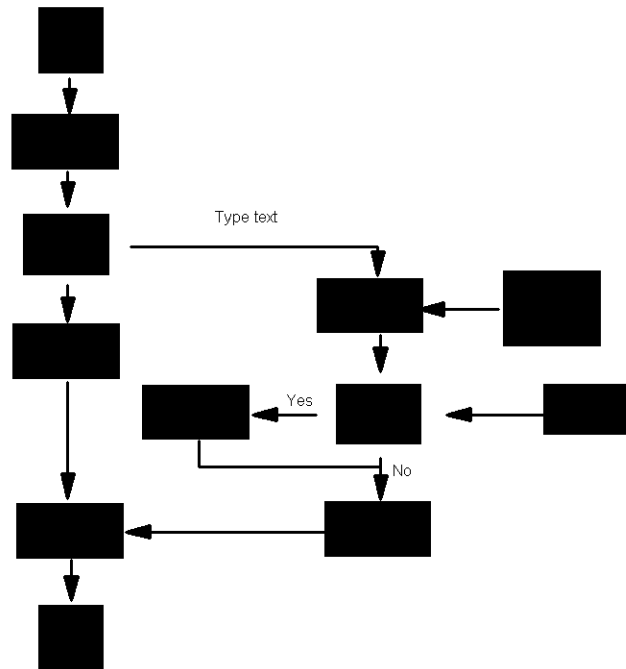
Remedy Selection Matrix

| | 100% | | | |
|--|------|--|--|--|

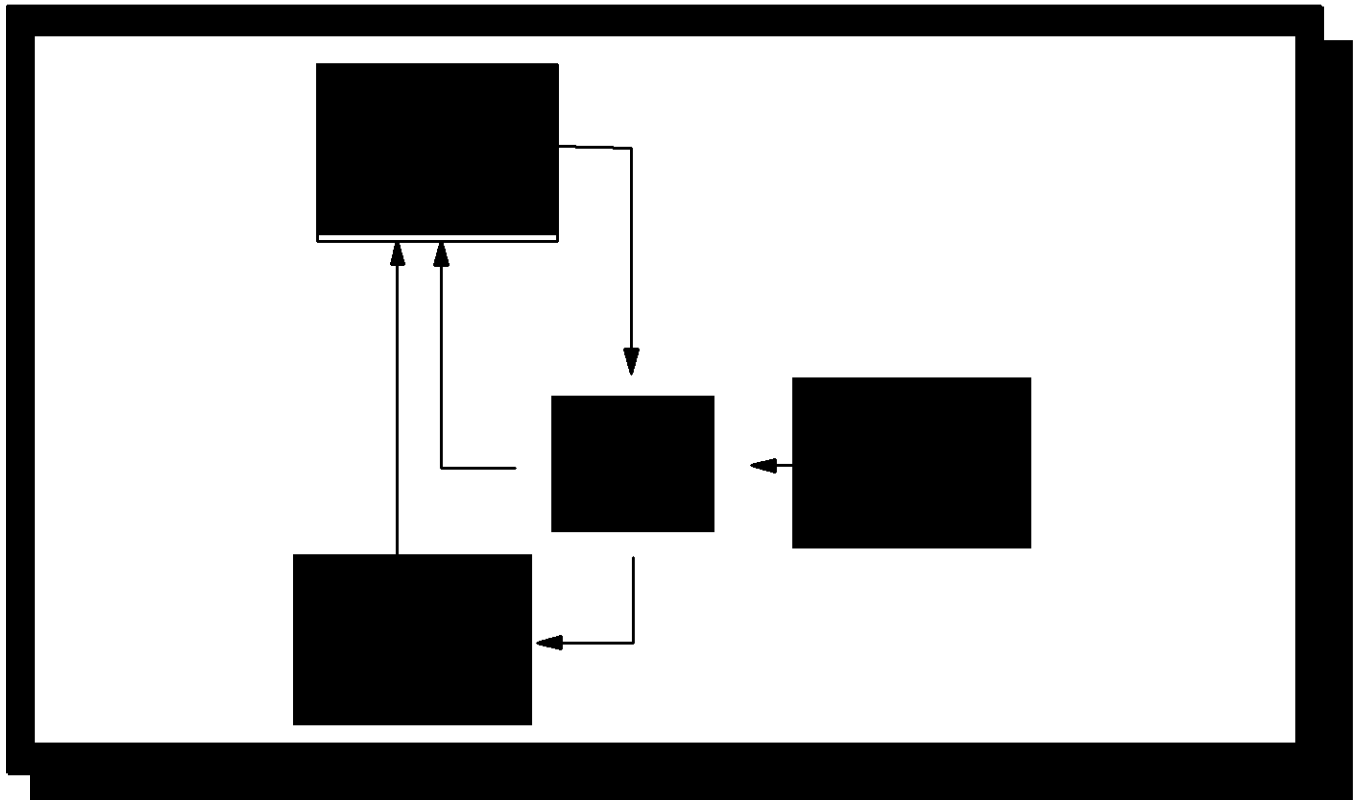
Remedy Design Features

| | |
|--|--|
| | |
| | |
| | |
| | |
| | |
| | |

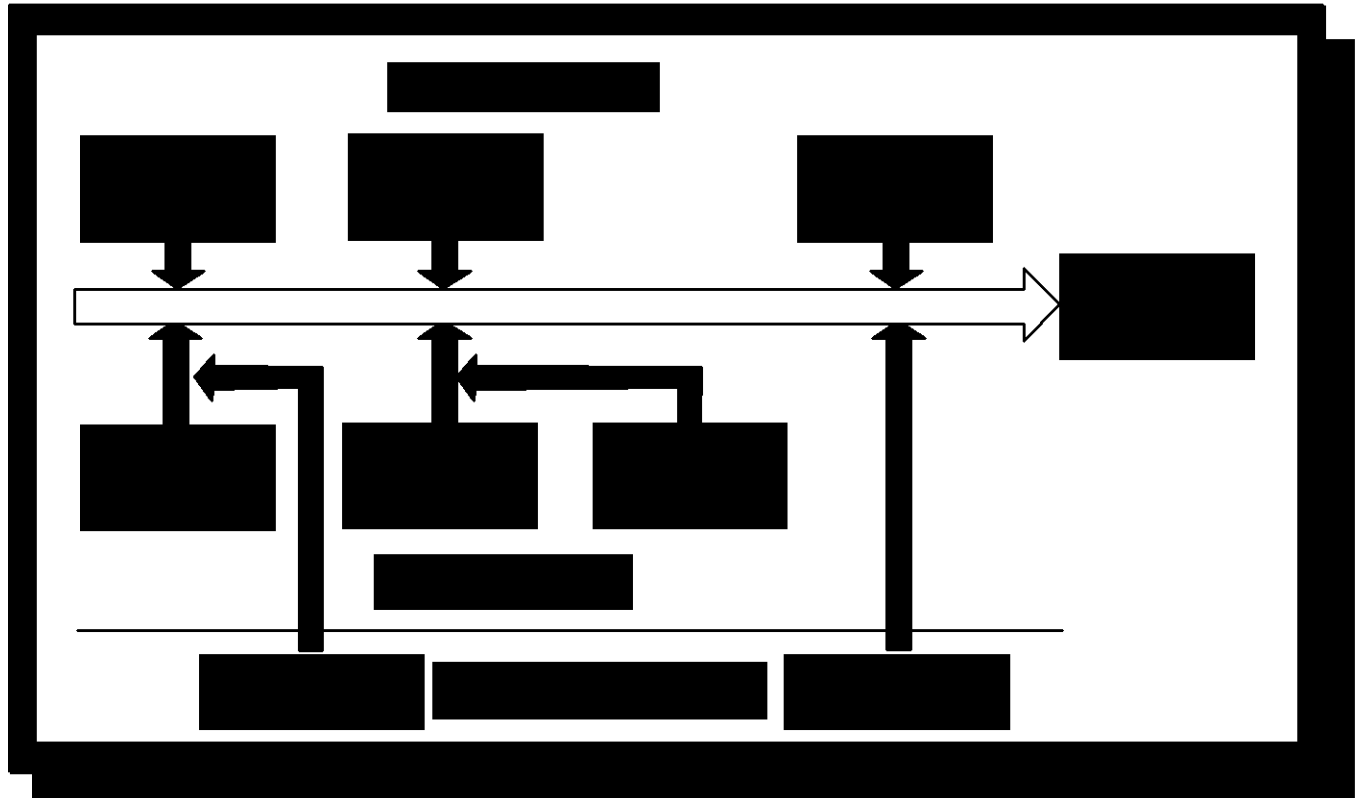
Diagram of Remedy



Feedback Loop

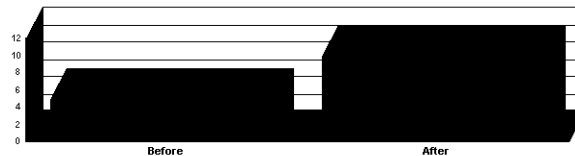


Cultural Barriers and Countermeasures

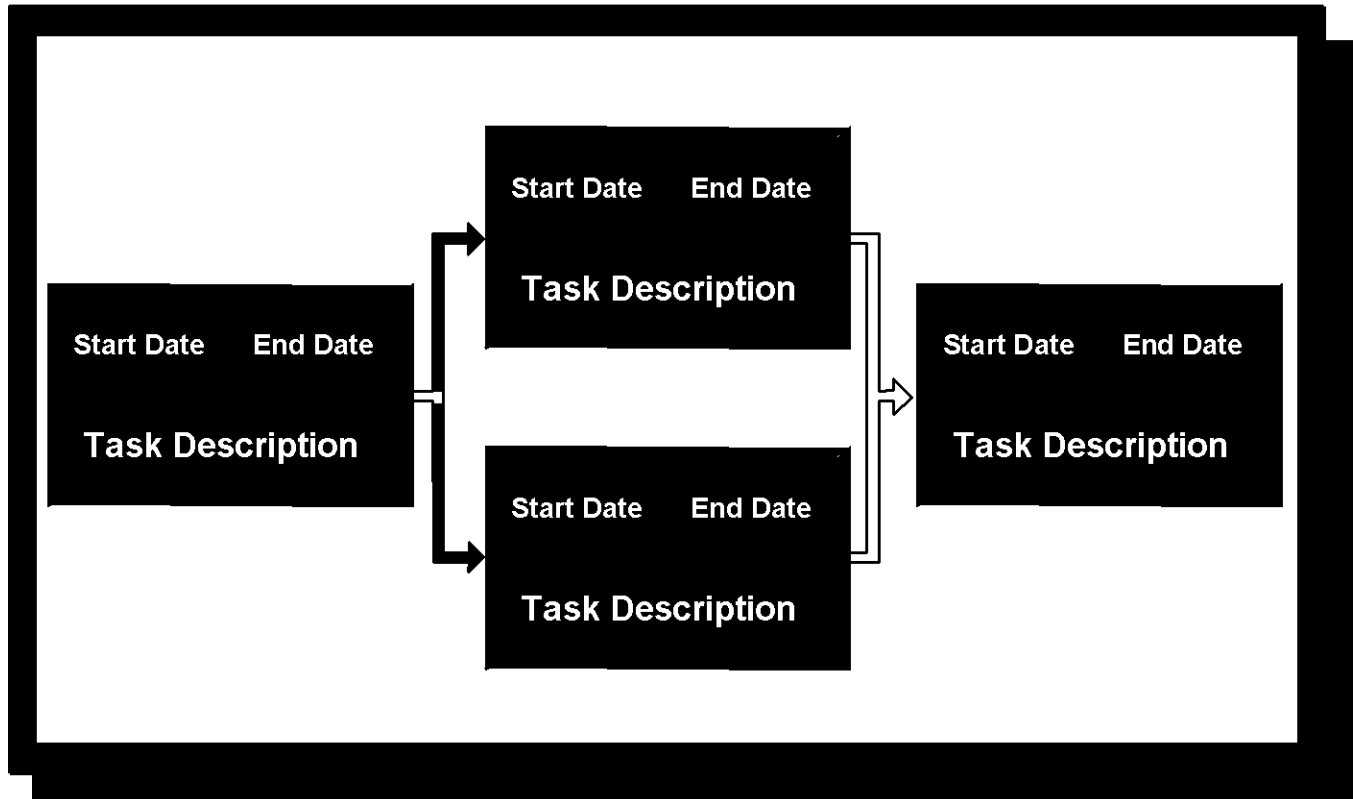


Effectiveness of Remedy

Click here to create chart of effectiveness of remedy

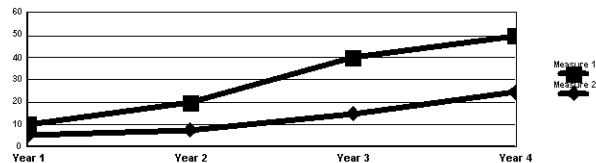


Implementation Plan



Impact of the Remedy

Click here to create chart of long-term impact of the remedy



Other Applications of Remedy

Potential New Projects

- Click here to list potential new projects

Click here for more