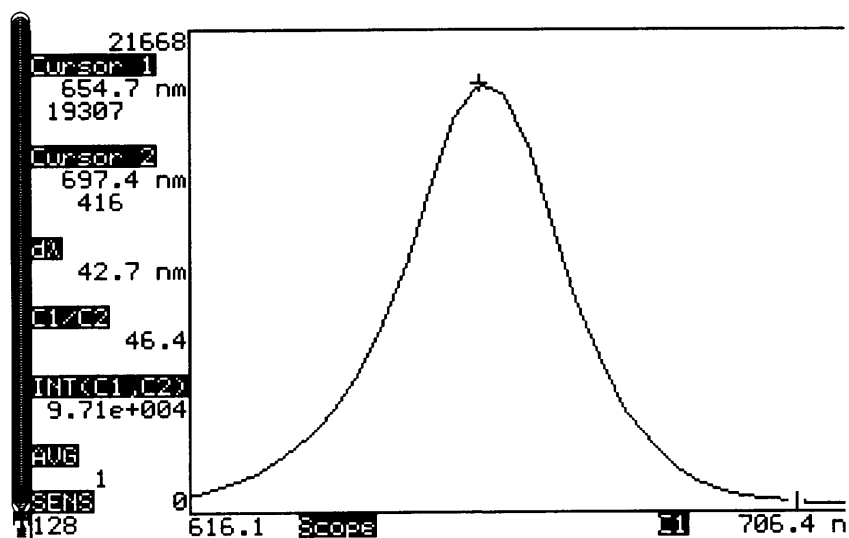


Spectrometer.	SPM 9001.
Manufacturer of Probe.	SensorMedics.
Type.	Finger.
Part no.	
Serial no.	
Connector.	6 pin male.
Connect to.	Oximeter or extension.
For use on.	
Tested on.	SensorMedics Sat-Trak.
Red peak wavelength (nm).	654.7.
Infrared peak wavelength (nm).	883.0.
Internal resistance value.	Unknown.
Emitter configuration.	Unknown.
Carried out by.	S Watmough. I Eng., B Eng.
Date.	05-01-00.



Spectrometer.	SPM 9001.
Manufacturer of Probe.	SensorMedics.
Type.	Finger.
Part no.	
Serial no.	
Connector.	6 pin male.
Connect to.	Oximeter or extension.
For use on.	
Tested on.	SensorMedics Sat-Trak.
Red peak wavelength (nm).	654.7.
Infrared peak wavelength (nm).	883.0.
Internal resistance value.	Unknown.
Emitter configuration.	Unknown.
Carried out by.	S Watmough. I Eng., B Eng.
Date.	05-01-00.