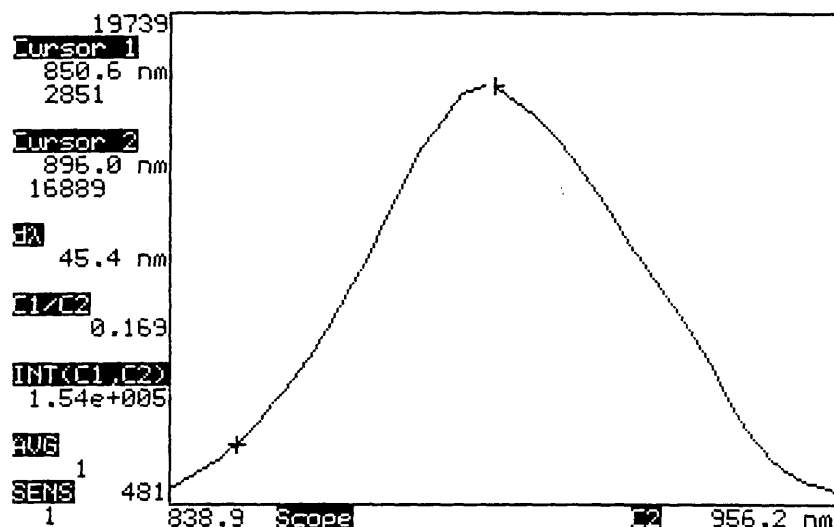


Spectrometer.	SPM 9001.
Manufacturer of Probe.	Beta Biomed Services Inc.
Type.	Finger.
Part no.	B500-1011.
Serial no.	90451978
Connector.	D type, 9 pin male.
Connect to.	Oximeter or extension cable.
For use on.	Nellcor oximeters.
Tested on.	3700
Red peak wavelength (nm).	658.0.
Infrared peak wavelength (nm).	896.0.
Internal resistance value.	7.70 k ohms.
Emitter configuration.	Opposing diodes, 2 lead drive.
Carried out by.	S Watmough. I Eng., B Eng.
Date.	14-12-99.

Notes.

Probe spectrally tested whilst connected to 3700 oximeter.

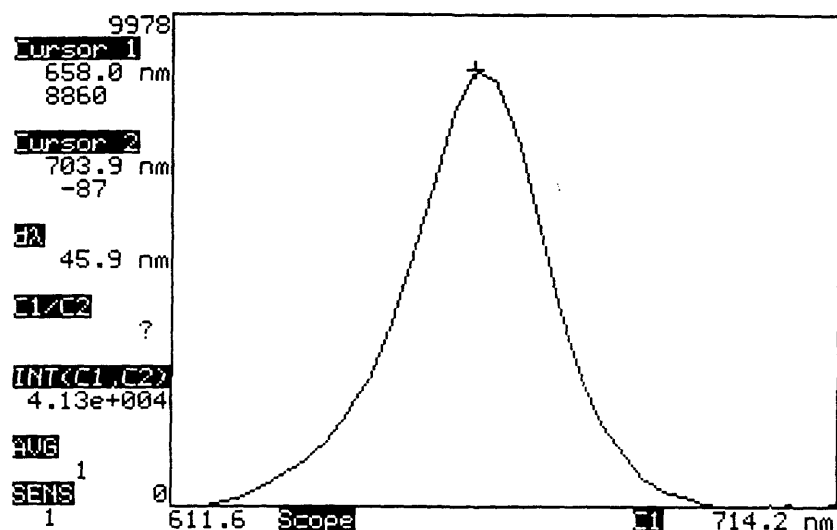


Spectrometer.	SPM 9001.
Manufacturer of Probe.	Beta Biomed Services Inc.
Type.	Finger.
Part no.	B500-1011.
Serial no.	90451978
Connector.	D type, 9 pin male.
Connect to.	Oximeter or extension cable.
For use on.	Nellcor oximeters.
Tested on.	<i>3700 N-180</i>
Red peak wavelength (nm).	658.0.
Infrared peak wavelength (nm).	896.0.
Internal resistance value.	7.70 k ohms.
Emitter configuration.	Opposing diodes, 2 lead drive.
Carried out by.	S Watmough. I Eng., B Eng.
Date.	14-12-99.

Notes.

N-180

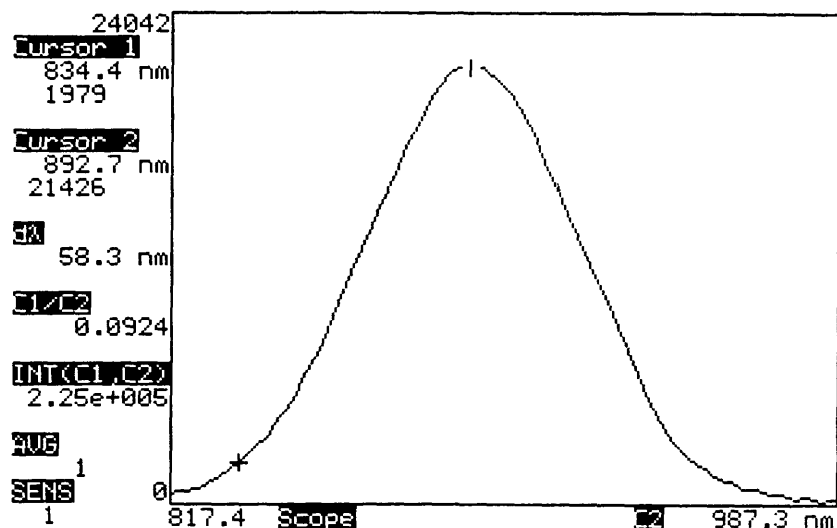
Probe spectrally tested whilst connected to *3700* oximeter.



Spectrometer.	SPM 9001.
Manufacturer of Probe.	Beta Biomed Services Inc.
Type.	Finger.
Part no.	B500-1017.
Serial no.	9.4.31982 (?).
Connector.	9 pin male connector, 7 pins used.
Connect to.	Oximeter or extension cable.
For use on.	Ohmeda oximeters.
Tested on.	3700
Red peak wavelength (nm).	658.0.
Infrared peak wavelength (nm).	892.7..
Internal resistance value.	62.2 k ohms.
Emitter configuration.	Parallel diodes, 3 lead drive.
Carried out by.	S Watmough. I Eng., B Eng.
Date.	14-12-99.

Notes.

Probe spectrally tested whilst connected to 3700 oximeter.



Spectrometer.	SPM 9001.
Manufacturer of Probe.	Beta Biomed Services Inc.
Type.	Finger.
Part no.	B500-1017.
Serial no.	9.4.31982 (?).
Connector.	9 pin male connector, 7 pins used.
Connect to.	Oximeter or extension cable.
For use on.	Ohmeda oximeters.
Tested on.	3700
Red peak wavelength (nm).	658.0.
Infrared peak wavelength (nm).	892.7..
Internal resistance value.	62.2 k ohms.
Emitter configuration.	Parallel diodes, 3 lead drive.
Carried out by.	S Watmough. I Eng., B Eng.
Date.	14-12-99.

Notes.

Probe spectrally tested whilst connected to 3700 oximeter.