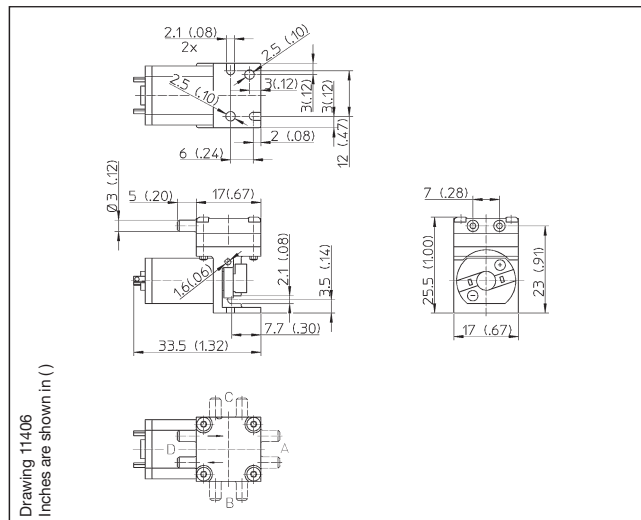


Diaphragm Pump 2002 VD LC

Flow	500 ml/min
Max. pressure	400 mbar
Max. vacuum	40%



Pneumatic Data

Description	2002VD/0,5/E/LC
Part number	3,5 V 20020215 (3,5 to 5 V)
Max. flow	500 ml/min
Max. intermittent duty	380 to 400 mbar
Max. continuous pressure	150 mbar
Max. restart pressure	150 mbar
Max. vacuum	36 to 40%
Max. restart vacuum	15%

Electrical Data

Motor type	Permanent magnet
Rated power	3,5 to 5 V/90 mA
Protection class	IP00
Bearing type	Sleeve bearing

General Data

Ambient temperature	10 to 50 °C
Media temperature	10 to 50 °C
Weight	17 g
Port direction	D

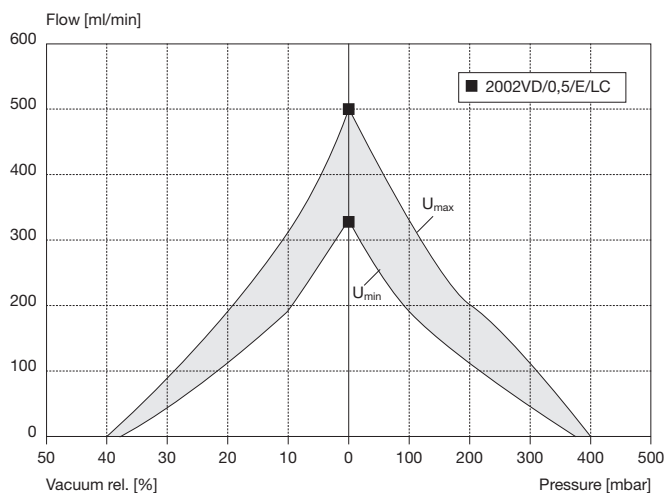
Wetted Parts

Pump head	Phenol resin
Diaphragm, valves	EPDM

Options

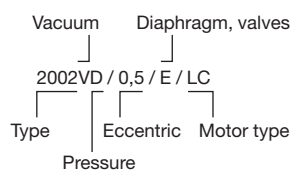
FPM (Viton®), Silicone

Flow Curves



Model key:

2002... Stock programme



The information presented in this material is based on technical data and test results of nominal units. It is believed to be accurate and reliable and is offered as an aid to help in the selection of Thomas products. It is the responsibility of the user to determine the suitability of the product for the intended use and the user assumes all risk and liability whatsoever in connection therewith. Thomas does not warrant, guarantee or assume any obligation or liability in connection with this information.

THOMAS
A Gardner Denver Product