

oxygen monitoring catalogue



UK
2023



VIAMED

The Leading Medical Oxygen Monitoring Supplier

Contact Us



01535 634 542



01535 635 582



15 Station Road
Cross Hills
Keighley
West Yorkshire, BD20 7DT
United Kingdom



info@viamed.co.uk



www.viamed.co.uk



VIAMED

Oxygen Sensors



OEM and compatible oxygen sensors for use with most oxygen analysers, oxygen monitors, anaesthesia systems, ventilators, incubators, oxygen concentrators...

see page 4...

RoHS compliant
lead-free sensors



see page 20...

Oxygen Monitors/Analysers



A range of oxygen monitors and analysers for use in a variety of applications...

see page 26...

Oxygen Monitoring Accessories



Accessories for use with oxygen sensors, patient circuits and oxygen analysers/monitors...

see page 33...



Oxygen Sensors EXPERIENCE

Viamed has been providing Oxygen Sensors since 1977. Speak to us regarding any of your oxygen sensor requirements.

WIDEST RANGE

Viamed have the widest range available on the market - we supply OEM and compatible oxygen sensors.

LATEST TECHNOLOGY

Sensors utilize the latest technology - providing high performance, reliability and accuracy.

RoHS Compliant Lead-free sensors now available see page 20.

FREE UK DELIVERY* & QUANTITY DISCOUNTS

on all oxygen sensors

**No minimum order value &
no order processing charge**

NHS Credit Facility available

**Viamed's online short-form cross reference can
be used to check compatibility, as well as for
details of additional oxygen sensors:**

www.viamed.co.uk/xref

Alternatively, or if your oxygen sensor or equipment is not listed,
please contact us and we will check our comprehensive database.

**Free oxygen sensor
disposal service**

for the safe disposal of
any of your depleted
oxygen sensors

0110051
T-1


Main OEM: Teledyne
OEM Sensor Part No.: A37016
Output Connector: Slip rings, 2
Sensor Output: $200 \pm 40 \mu\text{A}$
Sensor Life: 18 months
Response Time: ≤ 30 seconds
Warranty: 12 months

0110014
R-15V


Main OEM: Datex-Ohmeda
Teledyne Part No.: C41131
OEM Sensor Part No.: 0237-2034-700
Output Connector: Slip rings, 3
Sensor Output: $14.0 - 20.0 \text{ mV}$
 with 300Ω load
Sensor Life: 36 months
Response Time: ≤ 12 seconds
Warranty: 15 months

0110017
R-17MED


Main OEM: Teledyne
OEM Sensor Part No.: C43690
Output Connector: Phone jack, 0.141"
Sensor Output: $7.0 - 13.0 \text{ mV}$
Sensor Life: 36 months
Response Time: ≤ 6 seconds
Warranty: 15 months



**For our range of
 Oxygen Monitors and
 Analysers go to page 26**

0110018
R-17V


Main OEM: Envitec
OEM Sensor Part No.: OOM103-1
Output Connector: Phone jack, 3.5 mm
Sensor Output: $9.0 - 13.0 \text{ mV}$
Sensor Life: $\geq 500,000$ % oxygen hours
Response Time: ≤ 5 seconds
Warranty: 15 months

0110019
R-17Vi


Main OEM: Viamed
Application: Incubators
Output Connector: Phone jack, 3.5 mm
Sensor Output: $9.0 - 14.0 \text{ mV}$
Sensor Life: $\geq 1,000,000$ % oxygen hours
Response Time: ≤ 12 seconds
Warranty: 12 months

0110022
R-22MED



Main OEM: Teledyne
OEM Sensor Part No.: C-44611
Output Connector: Molex, 3 pin plug
Sensor Output: 7.0 - 13.0 mV
Sensor Life: 36 months
Response Time: ≤ 6 seconds
Warranty: 15 months

0110021
R-22MEDV



Main OEM: Dräger
OEM Sensor Part No.: 83 620 30
Output Connector: Molex, 3 pin plug
Sensor Output: 9.0 - 13.0 mV
Sensor Life: ≥ 500,000 % oxygen hours
Response Time: ≤ 5 seconds
Warranty: 12 months

0110039
R-22VA



Main OEM: Atom Medical
OEM Sensor Part No.: C81828-R22MATOM
Output Connector: Molex, 3 pin plug
Sensor Output: 9.0 - 13.0 mV
Sensor Life: ≥ 1,000,000 % oxygen hours
Response Time: ≤ 12 seconds
Warranty: 12 months

0110073
R-22VA
(Matched Pair)



Main OEM: Atom Medical
OEM Sensor Part No.: 60859
Output Connector: Molex, 3 pin plug
Sensor Output: 9.0 - 13.0 mV
Sensor Life: ≥ 1,000,000 % oxygen hours
Response Time: ≤ 12 seconds
Warranty: 12 months

0110020
R-22Vi



Main OEM: Viamed
Application: Incubators
Output Connector: Molex, 3 pin plug
Sensor Output: 9.0 - 14.0 mV
Sensor Life: ≥ 1,000,000 % oxygen hours
Response Time: ≤ 12 seconds
Warranty: 12 months

0110072
R-22Vi
(Matched Pair)



Main OEM: Viamed
Application: Incubators
Output Connector: Molex, 3 pin plug
Sensor Output: 9.0 - 14.0 mV
Sensor Life: ≥ 1,000,000 % oxygen hours
Response Time: ≤ 12 seconds
Warranty: 12 months

0110023
R-23V

Main OEM: Dräger
OEM Sensor Part No.: 6850645
Output Connector: Slip rings, 3
Sensor Output: 24 - 32 μ A
Sensor Life: $\geq 500,000$ % oxygen hours
Response Time: ≤ 12 seconds
Warranty: 15 months

0110024
R-24MED

Main OEM: Siemens
Teledyne Part No.: C61340
OEM Sensor Part No.: 64 19 332 E380E
Output Connector: Molex, 3 pin plug
Sensor Output: 10.0 - 17.0 mV
Sensor Life: 24 months
Response Time: ≤ 10 seconds
Warranty: 12 months

0110026
R-26MED

Main OEM: Respirationics
OEM Sensor Part No.: 8-100412-00
Output Connector: Phone jack, 0.141"
Sensor Output: 7.0 - 13.0 mV
Sensor Life: 24 months
Response Time: ≤ 10 seconds
Warranty: 12 months

0110040
R-30V

Main OEM: GE Healthcare
OEM Sensor Part No.: 6050-0004-110
Output Connector: Phone socket, 6P4C
Sensor Output: 10.0 - 12.0 mV
Sensor Life: $\geq 1,000,000$ % oxygen hours
Response Time: ≤ 12 seconds
Warranty: 15 months

0110041
R-41V

Main OEM: Airshields
OEM Sensor Part No.: 6735142
Output Connector:
 Phone socket, 3.5 mm
Sensor Output: 13.0 - 16.0 mV
Sensor Life: $\geq 1,000,000$ % oxygen hours
Response Time: ≤ 12 seconds
Warranty: 15 months

0110042
R-42V

Main OEM: Stephan
OEM Sensor Part No.: 130060001
Output Connector: AMP plug, 2 pin
Sensor Output: 9.0 - 11.5 mV
Sensor Life: $\geq 1,000,000$ % oxygen hours
Response Time: ≤ 12 seconds
Warranty: 15 months



0110043
R-43V
Pack of 2



Main OEM: Datex-Ohmeda
OEM Sensor Part No.: 6600-1278-600
Output Connector: Slip rings, 2
Sensor Output: 28.0 - 50.0 mV
Sensor Life: $\geq 500,000$ % oxygen hours
Response Time: ≤ 12 seconds
Warranty: 6 months



0110044
R-44V



Main OEM: MSA
OEM Sensor Part No.: 806572
Output Connector: Molex socket, 3 way
Sensor Output: 9.0 - 13.0 mV
Sensor Life: $\geq 1,000,000$ % oxygen hours
Response Time: ≤ 12 seconds
Warranty: 15 months



0110045
R-45V



Main OEM: Datascope
OEM Sensor Part No.: 0600-00-0002
Output Connector: Molex, 3 pin plug
Sensor Output: 9.0 - 13.0 mV
Sensor Life: $\geq 1,000,000$ % oxygen hours
Response Time: ≤ 12 seconds
Warranty: 15 months



0110047
R-47V



Main OEM: Acutronic
OEM Sensor Part No.: OOM204
Output Connector: Molex, 3 pin plug
Sensor Output: 9.0 - 13.5 mV (2 channels)
Sensor Life: $\geq 500,000$ % oxygen hours
Response Time: ≤ 12 seconds
Warranty: 15 months



0110048
R-48V



Main OEM: City Technology
OEM Sensor Part No.: MOX-3
Output Connector: Phone socket, 4 way
Sensor Output: 10.0 - 12.0 mV
Sensor Life: $\geq 1,000,000$ % oxygen hours
Response Time: ≤ 12 seconds
Warranty: 15 months



0110049
R-49V



Main OEM: Siemens
OEM Sensor Part No.: 64 19 332 E380E
Output Connector: Molex, 3 pin plug
Sensor Output: 13.0 - 16.0 mV
Sensor Life: $\geq 1,000,000$ % oxygen hours
Response Time: ≤ 12 seconds
Warranty: 15 months



0110057
T-7



Main OEM: Teledyne
OEM Sensor Part No.: A51327
Output Connector: Phone socket, 4 way
Sensor Output: $0.4 \pm 0.1 \mu\text{A}$
Sensor Life: 36 months
Response Time: ≤ 6 seconds
Warranty: 12 months



0110058
T-7V



Main OEM: Envitec
OEM Sensor Part No.: OOM105
Output Connector: Phone socket, 4 way
Sensor Output: $0.4 \pm 0.1 \mu\text{A}$
Sensor Life: $\geq 500,000$ oxygen hours
Response Time: ≤ 5 seconds
Warranty: 15 months



0110081
UFO 130-2



Main OEM: Spacelabs
OEM Sensor Part No.: 010-1120-01
Output Connector: DIL, 10 pin
Sensor Output: $3.4 \pm 0.4 \text{ V}$ @ 100% oxygen
Sensor Life: 24 months
Response Time: ≤ 130 milliseconds
Warranty: 12 months



0110401
MAX-1



Main OEM: Analytical Industries
OEM Sensor Part No.: PSR-11-915
Output Connector: Slip rings, 3
Sensor Output: $17.0 \pm 3.0 \text{ mV}$
Sensor Life: $\geq 500,000$ % oxygen hours
Response Time: ≤ 13 seconds
Warranty: 12 months



0110402
MAX-2



**Longer life
alternative to R-23V**

Main OEM: Dräger
OEM Sensor Part No.: 6850645
Output Connector: Slip rings, 3
Sensor Output: 12.2 - 18.1 mV
Sensor Life: $\geq 2,000,000$ % oxygen hours
Response Time: ≤ 15 seconds
Warranty: 24 months



0110403
MAX-3



Main OEM: City Technology
OEM Sensor Part No.: MOX-3
Output Connector: Phone socket, 4 way
Sensor Output: 9.0 - 13.0 mV
Sensor Life: $\geq 500,000$ % oxygen hours
Response Time: ≤ 15 seconds
Warranty: 12 months



0110460
MAX-7



Main OEM: Maxtec
OEM Sensor Part No.: R109P09
Output Connector: Phone jack, 3.5 mm
Sensor Output: 8.0 - 12.0 mV
Sensor Life: $\geq 1,000,000$ % oxygen hours
Response Time: ≤ 12 seconds
Warranty: 12 months



0110461
MAX-7L



Main OEM: Maxtec
OEM Sensor Part No.: R109P13
Output Connector: Phone jack, 3.5 mm
Sensor Output: 3.5 - 7.5 mV
Sensor Life: $\geq 1,000,000$ % oxygen hours
Response Time: ≤ 12 seconds
Warranty: 12 months



**Compatible lead-free
sensors are now available.
See page 20 for more
information.**



0110409
MAX-9



Main OEM: Teledyne
OEM Sensor Part No.: B39636-R13
Output Connector: 1 mm pin, x 4
Sensor Output: 26.4 - 44.0 mV
Sensor Life: 6 months
Response Time: ≤ 20 seconds
Warranty: 14 months



0110411
MAX-11



Main OEM: Dräger
Application: Fabius, Evita, Babylog, Cato
Output Connector: Slip rings, 3
Sensor Output: 14.0 - 20.0 mV
Sensor Life: $\geq 500,000$ % oxygen hours
Response Time: ≤ 12 seconds
Warranty: 12 months



0110441
MAX-11i



Main OEM: Dräger
OEM Sensor Part No.: 6850645
Output Connector: Slip rings, 3
Sensor Output: 14.0 - 20.0 mV
Sensor Life: $\geq 750,000$ % oxygen hours
Response Time: ≤ 12 seconds
Warranty: 12 months



0110412
MAX-12



Main OEM: Siemens
OEM Sensor Part No.: 9004979-E347E
Output Connector: Molex, 3 pin plug
Sensor Output: 12.5 - 16.5 mV
Sensor Life: $\geq 1,000,000$ % oxygen hours
Response Time: ≤ 12 seconds
Warranty: 12 months



0110462
MAX-12A



Main OEM: Philips (Respironics)
Application: NeoPAP
Output Connector: Molex, 3 pin plug
Sensor Output: 8.0 - 13.0 mV
Sensor Life: $\geq 500,000$ % oxygen hours
Response Time: ≤ 15 seconds
Warranty: 14 months



0110424
MAX-12C



Main OEM: Viasys
Application: Avea Ventilator
Output Connector: Molex, 3 pin plug
Sensor Output: 8.0 - 13.0 mV
Sensor Life: $\geq 1,000,000$ % oxygen hours
Response Time: ≤ 12 seconds
Warranty: 14 months



0110413
MAX-13



Main OEM: Philips (Respironics)
Application: Criterion Vent
Output Connector: Phone jack, 3.5 mm
Sensor Output: 13.0 - 16.5 mV
Sensor Life: $\geq 1,000,000$ % oxygen hours
Response Time: ≤ 12 seconds
Warranty: 14 months



0110463
MAX-13C



Main OEM: BioMed Devices
OEM Sensor Part No.: 4433
Output Connector: Phone jack, 2.5 mm
Sensor Output: 13.0 - 17.0 mV
Sensor Life: $\geq 1,000,000$ % oxygen hours
Response Time: ≤ 13 seconds
Warranty: 14 months



0110469
MAX-13CS



Main OEM: BioMed Devices
OEM Sensor Part No.:
 Crossvent 2+, 2i+, 3+, 4+
Output Connector: Phone jack, 2.5mm
Sensor Output: 10.5 - 15.0 mV
Sensor Life: 3 years
Response Time: ≤ 15 seconds
Warranty: 12 months



0110444
MAX-13-250



Main OEM: Maxtec
OEM Sensor Part No.: R125P07
Output Connector: Phone jack, 3.5 mm
Sensor Output: 12.0 - 17.0 mV
Sensor Life: $\geq 1,500,000$ % oxygen hours
Response Time: ≤ 15 seconds
Warranty: 24 months



0110414
MAX-14



Main OEM: MSA
OEM Sensor Part No.: 806572
Output Connector: Molex, 3 pin plug
Sensor Output: 9.0 - 13.0 mV
Sensor Life: $\geq 1,000,000$ % oxygen hours
Response Time: ≤ 13 seconds
Warranty: 14 months



0110420
MAX-14 (Fluke)



Main OEM: Fluke
OEM Sensor Part No.: R116P82-001
Output Connector: Molex SL, 2 pin
Sensor Output: 9.0 - 13.0 mV
Sensor Life: $\geq 1,000,000$ % oxygen hours
Response Time: ≤ 12 seconds
Warranty: 12 months



0110416
MAX-16



Main OEM: Nellcor Puritan Bennett
OEM Sensor Part No.: 4-072214-00
Output Connector: Molex, 3 pin plug
Sensor Output: 8.5 - 15.0 mV
Sensor Life: $\geq 1,500,000$ % oxygen hours
Response Time: ≤ 15 seconds
Warranty: 16 months



0110421
MAX-16HT



Main OEM: Versamed
Application: Vent
Output Connector: Molex, 3 pin plug
Sensor Output: 9.5 - 16.0 mV
Sensor Life: $\geq 1,500,000$ % oxygen hours
Response Time: ≤ 12 seconds
Warranty: 18 months



0110417
MAX-17



Main OEM: Teledyne
OEM Sensor Part No.: T-7
Output Connector: Phone socket, 4 way
Sensor Output: 7.5 - 12.5 mV
Sensor Life: $\geq 500,000$ % oxygen hours
Response Time: ≤ 8 seconds
Warranty: 12 months



0110418
MAX-18



Main OEM: Teledyne
OEM Sensor Part No.: C-1R
Output Connector: Slip rings, 2
Sensor Output: $200 \pm 40 \mu\text{A}$
Sensor Life: $\geq 250,000$ % oxygen hours
Response Time: ≤ 13 seconds
Warranty: 12 months



0110419
MAX-19



Main OEM: Teledyne
OEM Sensor Part No.: T-1
Output Connector: Slip rings, 2
Sensor Output: $170 - 230 \mu\text{A}$
Sensor Life: $\geq 250,000$ % oxygen hours
Response Time: ≤ 20 seconds
Warranty: 12 months



0110464
MAX-23



Main OEM: Teledyne
OEM Sensor Part No.: R-22MED
Output Connector: Molex, 3 pin plug
Sensor Output: $8.0 - 13.0 \text{ mV}$
Sensor Life: $\geq 500,000$ % oxygen hours
Response Time: $1.5 - 3.5$ seconds
Warranty: 12 months



**Free oxygen sensor
disposal service**
for the safe disposal of
any of your depleted
oxygen sensors



0110465
MAX-24



Main OEM: Maxtec
OEM Sensor Part No.: R109P15
Output Connector: AMP plug, 2 pin
Sensor Output: $8.5 - 11.5 \text{ mV}$
Sensor Life: $\geq 500,000$ % oxygen hours
Response Time: ≤ 12 seconds
Warranty: 16 months



0110466
MAX-25



Main OEM: Figaro
OEM Sensor Part No.: KE-25
Output Connector: Unterminated
Sensor Output: $10.0 - 15.5 \text{ mV}$
Sensor Life: 5 years
Response Time: 14 ± 2 seconds
Warranty: 24 months



0110449
MAX-43
Pack of 2



Main OEM: GE (Ohmeda)

Application: Giraffe

Output Connector: Slip rings, 2

Sensor Output: 25.0 - 35.0 mV

Sensor Life: $\geq 500,000$ % oxygen hours

Response Time: ≤ 17 seconds

Warranty: 12 months



0110438
MAX-47



Main OEM: Teleflex (Hudson)

OEM Sensor Part No.: 5803

Output Connector: Phone socket, 4 way

Sensor Output: 4.0 - 11.0 mV

Sensor Life: $\geq 500,000$ % oxygen hours

Response Time: ≤ 12 seconds

Warranty: 12 months



0110439
MAX-48



Main OEM: Analytical Industries

OEM Sensor Part No.: All-11-60

Output Connector: Phone socket, 4 way

Sensor Output: 3.8 - 4.8 mV

Sensor Life: $\geq 500,000$ % oxygen hours

Response Time: ≤ 12 seconds

Warranty: 12 months



0110450
MAX-50



Main OEM: Figaro

OEM Sensor Part No.: KE-50

Output Connector: 2 pin socket

Sensor Output: 47.0 - 65.0 mV

Sensor Life: 5 years

Response Time: 60 ± 5 seconds

Warranty: 24 months



0110470
MAX-108A



OEM Sensor Part No.: R109P21

Sensor Output: 8.0 - 15.0 mV

Warranty: 12 months



0110468
MAX-125M



Main OEM: Covidien

OEM Sensor Part No.: 4-072214-00

Output Connector: Molex, 3 pin plug

Sensor Output: 10.0 - 15.5 mV

Sensor Life: $\geq 500,000$ % oxygen hours

Response Time: ≤ 15 seconds

Warranty: 12 months



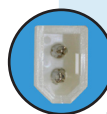
0110473
MAX-125WF



Main OEM: Fluke
OEM Sensor Part No.: R116P82-001
Output Connector: Molex SL, 2 pin
Sensor Output: 10.5 - 15.0 mV
Sensor Life: $\geq 500,000$ % oxygen hours
Response Time: ≤ 15 seconds
Warranty: 12 months



0110428
MAX-250



without 'O' Ring

Main OEM: Maxtec
OEM Sensor Part No.: R125P01-002
Output Connector: 2 pin socket
Sensor Output: 10.0 - 15.5 mV
Sensor Life: $\geq 1,500,000$ % oxygen hours
Response Time: ≤ 15 seconds
Warranty: 24 months



0110425
MAX-250



with 'O' Ring

Main OEM: Maxtec
OEM Sensor Part No.: R125P01-007
Output Connector: 2 pin socket
Sensor Output: 10.0 - 15.5 mV
Sensor Life: $\geq 1,500,000$ % oxygen hours
Response Time: ≤ 15 seconds
Warranty: 24 months



0110427
MAX-250+



Main OEM: Maxtec
OEM Sensor Part No.: R125P02-011
Output Connector: Molex SL, 2 pin
Sensor Output: 10.0 - 15.5 mV
Sensor Life: $\geq 1,500,000$ % oxygen hours
Response Time: ≤ 15 seconds
Warranty: 24 months



0110431
MAX-250A



Main OEM: Blease
OEM Sensor Part No.: 70300001
Output Connector: Phone socket, 4 way
Sensor Output: 11.0 ± 2.5 mV
Sensor Life: $\geq 1,500,000$ % oxygen hours
Response Time: ≤ 15 seconds
Warranty: 24 months



0110432
MAX-250(B)



Main OEM: Maxtec
OEM Sensor Part No.: R125P02-003
Output Connector: Unterminated
Sensor Output: 10.0 - 15.5 mV
Sensor Life: $\geq 1,500,000$ % oxygen hours
Response Time: ≤ 15 seconds
Warranty: 24 months



0110429
MAX-250E



Main OEM: Maxtec
OEM Sensor Part No.: R125P03-002
Output Connector: Mini power socket
Sensor Output: 10.0 - 15.5 mV
Sensor Life: $\geq 1,500,000$ % oxygen hours
Response Time: ≤ 15 seconds
Warranty: 24 months



0110430
MAX-250ESF



Main OEM: Maxtec
OEM Sensor Part No.: R115P85
Output Connector: Mini power socket
Sensor Output: 12.0 ± 2.0 mV
Sensor Life: $\geq 500,000$ % oxygen hours
Response Time: ≤ 5 seconds
Warranty: 12 months



0110433
MAX-250K
with DC



Main OEM: Viasys
OEM Sensor Part No.: 16101
Output Connector: Mini power plug
Sensor Output: 10.0 - 15.5 mV
Sensor Life: $\geq 1,500,000$ % oxygen hours
Response Time: ≤ 15 seconds
Warranty: 24 months



0110451
MAX-250K
with Panduit



Main OEM: Viasys
OEM Equipment: Vela T2
Output Connector: Panduit
Sensor Output: 10.0 - 15.5 mV
Sensor Life: $\geq 1,500,000$ % oxygen hours
Response Time: ≤ 15 seconds
Warranty: 24 months



0110435
MAX-250TM



Main OEM: Maxtec
OEM Sensor Part No.: R125P18-012
Output Connector:
 Molex, 3 pin plug, 3P2C
Sensor Output: 11.0 ± 2.5 mV
Sensor Life: $\geq 1,500,000$ % oxygen hours
Response Time: ≤ 15 seconds
Warranty: 24 months



0110452
MAX-550E



Main OEM: Maxtec
OEM Sensor Part No.: R140P02
Application: MaxO2 ME Monitor
Output Connector: Stereo phone jack, 3.5 mm
Sensor Output: 10.5 - 15.0 mV
Sensor Life: $\geq 1,500,000$ % oxygen hours
Response Time: ≤ 15 seconds
Warranty: 24 months



0110454
MAX-550E



**Flow Diverter also
available separately**
Part Number: 0120086



Main OEM: Maxtec
Application: MaxBlend Devices
Output Connector: Stereo phone jack, 3.5 mm
Sensor Output: 10.5 - 15.0 mV
Sensor Life: $\geq 1,500,000$ % oxygen hours
Response Time: ≤ 15 seconds
Warranty: 24 months



0110584
OOM103-1M

ENVITEC
by Honeywell

Main OEM: Maxtec
OEM Sensor Part No.: MAX-250ESF
Output Connector: Mini power socket
Sensor Output: 9.0 - 13.0 mV
Sensor Life: $\geq 500,000$ % oxygen hours
Response Time: ≤ 5 seconds
Warranty: 15 months



0110565
OOM109

ENVITEC
by Honeywell

Main OEM: Cortex
Output Connector: Molex, 3 pin plug
Sensor Output: 9.0 - 13.0 mV
Sensor Life: $\geq 200,000$ % oxygen hours
Response Time: ≤ 360 milliseconds
Warranty: 9 months



0110566
OOM109-LF2

ENVITEC
by Honeywell

Output Connector: Molex, 3 pin plug
Sensor Output: 9.0 - 13.0 mV
Sensor Life: $\geq 200,000$ % oxygen hours
Response Time: ≤ 360 milliseconds
Warranty: 9 months



0110560
OOM111

ENVITEC
by Honeywell



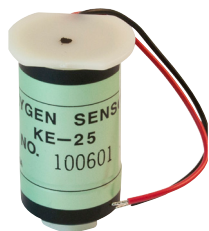
Main OEM: Envitec
OEM Sensor Part No.: 01-00-0114
Output Connector: Stereo phone jack, 3.5 mm
Sensor Output: 11.0 - 13.0 mV
Sensor Life: $\geq 1,000,000$ % oxygen hours
Response Time: ≤ 12 seconds
Warranty: 15 months



0110660
OOI103

ENVITEC
by Honeywell

Main OEM: Envitec
OEM Sensor Part No.: 01-00-0095
Output Connector: Slip rings, 4
Sensor Output: 9.0 - 15.0 mV
Sensor Life: $\geq 500,000$ % oxygen hours
Response Time: ≤ 13 seconds
Warranty: 15 months



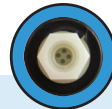
0110524
KE-25



Output Connector: Unterminated
Inlet Connector: Hexagon moulding
Sensor Output: 10.0 - 15.5 mV
Sensor Life: 5 years
Response Time: 14 ± 2 seconds
Warranty: 12 months



0110529
KE-25F1



Output Connector: Unterminated
Inlet Connector: Hexagon moulding
Sensor Output: 10.0 - 15.5 mV
Sensor Life: 5 years
Response Time: 14 ± 2 seconds
Warranty: 12 months

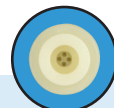
Viamed's online short-form cross reference can be used to check compatibility, as well as for details of additional oxygen sensors:

www.viamed.co.uk/xref

Alternatively, or if your oxygen sensor or equipment is not listed, please contact us and we will check our comprehensive database.



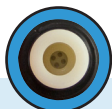
0110534
KE-25F3



Output Connector: Unterminated
Inlet Connector: Threaded, M16 x 1 mm
Sensor Output: 10.0 - 15.5 mV
Sensor Life: 5 years
Response Time: 14 ± 2 seconds
Warranty: 12 months



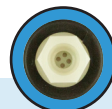
0110539
KE-25F4



Output Connector: Unterminated
Inlet Connector: O Ring, 16 mm
Sensor Output: 10.0 - 15.5 mV
Sensor Life: 5 years
Response Time: 14 ± 2 seconds
Warranty: 12 months



0110544
KE-50



Output Connector: Unterminated
Inlet Connector: Hexagon moulding
Sensor Output: 47.0 - 65.0 mV
Sensor Life: 10 years
Response Time: 60 ± 5 seconds
Warranty: 12 months



Lead-free Oxygen Sensors



RoHS COMPLIANT



The Restriction of the Use of Certain Hazardous Substances (RoHS) in Electrical and Electronic Equipment (EEE) Directive (2011/65/EU) 8th June 2011 was transposed into UK law on the 2nd January 2013. Under the recast RoHS, lead anodes in electrochemical oxygen sensors had been granted exemption status until 22nd July 2021.

However, the European Commission received two exemption requests during the period November-January 2019/2020. Therefore, whilst the review process is carried out, the exemption status has in effect been extended, until the Commission's decision is finalised.

In the meantime, Viamed continues to introduce and phase in a range of RoHS Compliant lead-free alternatives. Should you be unable to find the lead-free alternative you require, please contact us or visit our website... www.viamed.co.uk/xref

ENVITEC

by Honeywell

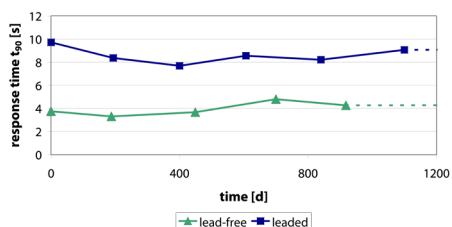
- RoHS compliant (lead-free)
- One-to-one direct replacement for standard legacy 'leaded' sensors

Viamed Part No.	Original Sensor Description	Envitec Lead-Free Alternative
0110018	Viamed R-17V	0110810 / OOMLF103-1 / 1002534
0110019	Viamed R-17Vi	0110801 / OOMLF102-1 / 1002532
0110020	Viamed R-22Vi	0110800 / OOMLF102 / 1002523
0110021	Viamed R-22MEDV	0110809 / OOMLF103 / 1002533
0110040	Viamed R-30V	0110803 / OOMLF110 / 1002536
0110041	Viamed R-41V	0110806 / OOMLF202-1 / 1002540
0110042	Viamed R-42V	0110808 / OOMLF202-2S / 1002608
0110044	Viamed R-44V	0110807 / OOMLF202-2 / 1002606
0110045	Viamed R-45V	0110802 / OOMLF106 / 1002582
0110049	Viamed R-49V	0110805 / OOMLF202 / 1002539
0110585	Envitec OOM103-1M	0110811 / OOMLF103-1M / 1000090
0110560	Envitec OOM111	0110804 / OOMLF111 / 1002537

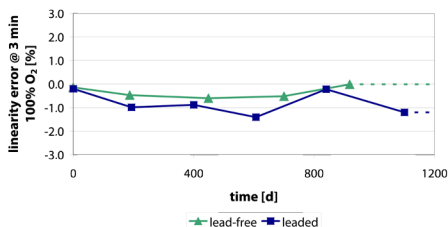


- RoHS compliant (lead-free)
- For use with latest generation and future monitoring equipment; offering faster response time and reduced linearity error.

Response time t_{90}



Linearity error





0110800
OOMLF102

ENVITEC
by Honeywell



Main OEM: Envitec
OEM Sensor Part No.: 1002523
Output Connector: Molex, 3 pin plug
Sensor Output: 9.0 - 14.0 mV
Sensor Life: ≤ 3 years
Response Time: ≤ 12 seconds
Warranty: 15 months



0110801
OOMLF102-1

ENVITEC
by Honeywell



Main OEM: Envitec
OEM Sensor Part No.: 1002532
Output Connector: Phone jack, 3.5 mm
Sensor Output: 9.0 - 14.0 mV
Sensor Life: ≤ 3 years
Response Time: ≤ 12 seconds
Warranty: 15 months



0110809
OOMLF103

ENVITEC
by Honeywell



Main OEM: Envitec
OEM Sensor Part No.: 1002533
Output Connector: Molex, 3 pin plug
Sensor Output: 9.0 - 13.0 mV
Sensor Life: ≤ 3 years
Response Time: ≤ 12 seconds
Warranty: 15 months



0110810
OOMLF103-1

ENVITEC
by Honeywell



Main OEM: Envitec
OEM Sensor Part No.: 1002534
Output Connector: Phone jack, 3.5 mm
Sensor Output: 9.0 - 13.0 mV
Sensor Life: ≤ 3 years
Response Time: ≤ 12 seconds
Warranty: 15 months



0110811
OOMLF103-1M

ENVITEC
by Honeywell



Main OEM: Maxtec
OEM Sensor Part No.: MAX-250ESF
Output Connector: Mini power socket
Sensor Output: 9.0 - 13.0 mV
Sensor Life: ≥ 500,000 % oxygen hours
Response Time: ≤ 5 seconds
Warranty: 15 months



0110802
OOMLF106

ENVITEC
by Honeywell



Main OEM: Envitec
OEM Sensor Part No.: 1002582
Output Connector: Molex, 3 pin plug
Sensor Output: 9.0 - 13.0 mV
Sensor Life: ≤ 3 years
Response Time: ≤ 12 seconds
Warranty: 15 months



0110803
OOMLF110

ENVITEC
by Honeywell



Main OEM: Envitec
OEM Sensor Part No.: 1002536
Output Connector: Phone socket, 6P4C
Sensor Output: 9.0 - 13.0 mV
Sensor Life: ≤ 3 years
Response Time: ≤ 12 seconds
Warranty: 15 months



0110804
OOMLF111

ENVITEC
by Honeywell



Main OEM: Envitec
OEM Sensor Part No.: 1002537
Output Connector: Phone jack, 3.5 mm
Sensor Output: 11.0 - 13.0 mV
Sensor Life: ≤ 3 years
Response Time: ≤ 12 seconds
Warranty: 15 months



0110805
OOMLF202

ENVITEC
by Honeywell



Main OEM: Envitec
OEM Sensor Part No.: 1002539
Output Connector: Molex, 3 pin plug
Sensor Output: 10.0 - 14.0 mV
Sensor Life: ≤ 3 years
Response Time: ≤ 12 seconds
Warranty: 15 months



0110806
OOMLF202-1

ENVITEC
by Honeywell



Main OEM: Envitec
OEM Sensor Part No.: 1002540
Output Connector: Phone jack, 3.5 mm
Sensor Output: 10.0 - 14.0 mV
Sensor Life: ≤ 3 years
Response Time: ≤ 12 seconds
Warranty: 15 months



0110807
OOMLF202-2

ENVITEC
by Honeywell



Main OEM: Envitec
OEM Sensor Part No.: 1002606
Output Connector: Molex socket, 3 way
Sensor Output: 9.0 - 13.0 mV
Sensor Life: ≤ 3 years
Response Time: ≤ 12 seconds
Warranty: 15 months



0110808
OOMLF202-2S

ENVITEC
by Honeywell



Main OEM: Envitec
OEM Sensor Part No.: 1002608
Output Connector: AMP plug, 2 pin
Sensor Output: 9.0 - 11.5 mV
Sensor Life: ≤ 3 years
Response Time: ≤ 12 seconds
Warranty: 15 months



0110700
MLF-03



Main OEM: I.T. Gambert
OEM Sensor Part No.: 410303
Output Connector: Phone jack, 3.5 mm
Sensor Output: 13.0 - 16.5 mV
Sensor Life: $\geq 2,000,000$ % oxygen hours
Response Time: ≤ 7 seconds
Warranty: 15 months



0110701
MLF-04



Main OEM: I.T. Gambert
OEM Sensor Part No.: 410606
Output Connector: Molex, 3 pin plug
Sensor Output: 13.0 - 16.5 mV
Sensor Life: $\geq 2,000,000$ % oxygen hours
Response Time: ≤ 7 seconds
Warranty: 15 months



0110702
MLF-12A



Main OEM: I.T. Gambert
OEM Sensor Part No.: 410417
Output Connector: Molex, 3 pin plug
Sensor Output: 9.0 - 13 mV
Sensor Life: $\geq 2,000,000$ % oxygen hours
Response Time: ≤ 7 seconds
Warranty: 15 months



0110703
MLF-15



Main OEM: I.T. Gambert
OEM Sensor Part No.: 410523
Output Connector: Phone jack, 3.5 mm
Sensor Output: 8.0 - 13.0 mV
Sensor Life: $\geq 2,000,000$ % oxygen hours
Response Time: ≤ 7 seconds
Warranty: 15 months



0110704
MLF-16



Main OEM: I.T. Gambert
OEM Sensor Part No.: 470316
Output Connector: Molex, 3 pin plug
Sensor Output: 9.0 - 13.0 mV
Sensor Life: $\geq 2,000,000$ % oxygen hours
Response Time: ≤ 7 seconds
Warranty: 15 months



0110705
MLF-19



Main OEM: I.T. Gambert
OEM Sensor Part No.: 470042
Output Connector: Phone socket, 4 way
Sensor Output: 9.0 - 13.0 mV
Sensor Life: $\geq 2,000,000$ % oxygen hours
Response Time: ≤ 7 seconds
Warranty: 15 months

0110706
MLF-43

Main OEM: I.T. Gamber
OEM Sensor Part No.: 410032
Output Connector: Slip rings, 2
Sensor Output: 11.0 - 15.0 mV
Sensor Life: $\geq 2,000,000$ % oxygen hours
Response Time: ≤ 7 seconds
Warranty: 15 months

0110707
MLF-60HC

Main OEM: I.T. Gamber
OEM Sensor Part No.: 410040
Output Connector: Molex, 3 pin plug
Sensor Output: 0.8 - 1.25 V
Sensor Life: $\geq 2,000,000$ % oxygen hours
Response Time: ≤ 7 seconds
Warranty: 15 months

0110708
MLF-650

Main OEM: I.T. Gamber
OEM Sensor Part No.: 410033
Output Connector: Molex, 3 pin plug
Sensor Output: 9.0 - 14.0 mV
Sensor Life: $\geq 1,000,000$ % oxygen hours
Response Time: ≤ 650 milliseconds
Warranty: 15 months

0110709
MLF-350

Main OEM: I.T. Gamber
OEM Sensor Part No.: 410035
Output Connector: Molex, 3 pin plug
Sensor Output: 9.0 - 14.0 mV
Sensor Life: $\geq 1,000,000$ % oxygen hours
Response Time: ≤ 350 milliseconds
Warranty: 15 months

0110710
MLF-16D

Main OEM: I.T. Gamber
OEM Sensor Part No.: 471116
Output Connector: Molex, 4 pin plug
 (digital sensor output signal, I²C interface)
Sensor Output: 2546 - 4455 bytes
Sensor Life: $\geq 2,000,000$ % oxygen hours
Response Time: ≤ 7 seconds
Warranty: 15 months

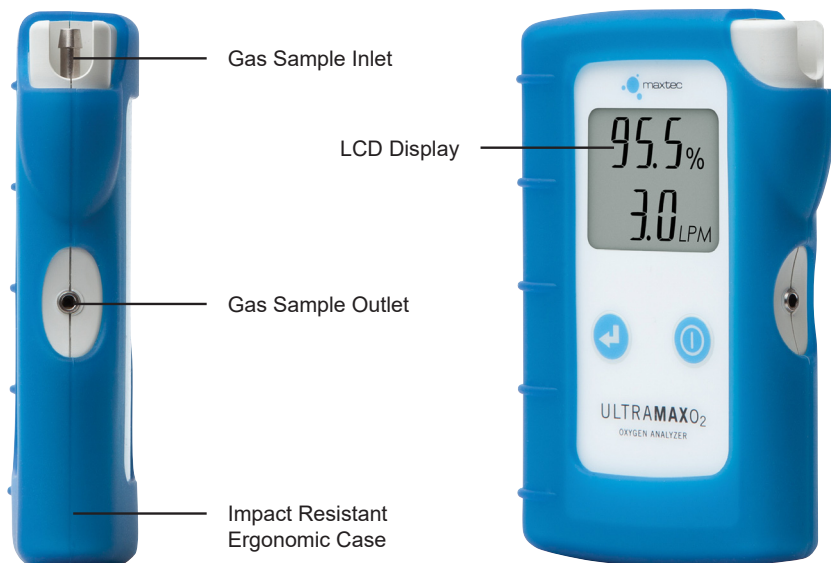
0110467
MAX-15LF

Main OEM: Maxtec
OEM Sensor Part No.: R115P61
Output Connector: Phone jack, 3.5 mm
Sensor Output: 8.0 - 13.0 mV
Sensor Life: $\geq 2,000,000$ % oxygen hours
Response Time: ≥ 10 seconds
Warranty: 24 months

UltraMaxO₂

The UltraMaxO₂ offers a fast and easy verification of oxygen concentration, flow and outlet pressure of oxygen concentrators

- Accurately measures oxygen, flow & pressure
- No oxygen sensor required
- No in-field calibration
- Self-diagnostics
- Shielded, reinforced sample gas inlet port
- Measurement range: 20.9 - 96%
- Warranty: 36 months

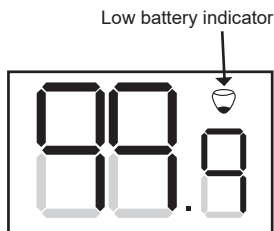


OxiQuant S

Oxygen Analyser

ENVITEC
by Honeywell

Used to determine oxygen concentrations in gas mixtures,
delivered by oxygen concentrators, blenders...



0111275

- Flexible manual calibration
- Auto-off (after 3 minutes)
- Response time:
< 13 seconds to 90% of value
- Sensor (with integrated battery)
can be replaced
- Warranty: Analyser 24 months,
sensor 15 months

Note: Not approved for monitoring medical breathing air
whilst in direct contact with patients.

CE

**Includes operator manual and the following
standard accessories:**

0110660



OOI103
Oxygen Sensor

0120399 Pk of 5



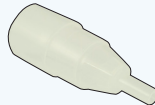
'T' Adapter 22mm I.D. -
22mm O.D., T = 15mm I.D.
Single Unit Supplied

0120092*



Flow Diverter
15 mm O.D.

0120124**



Connector
22 mm oxygen stem

* Also available in pack quantity 0120093 - pack of 10

** Also available in pack quantity 0120174 - pack of 50

Handi+



Oxygen Analyser

This analyser is great for spot-checking oxygen percentage in hospitals, clinics and in homecare environments. Includes integrated sensor and battery.



0111250

- One-touch calibration (room air 20.9% oxygen, or 100% oxygen)
- Auto-off (after 80 seconds)
- Response time: < 15 seconds to 90% of value
- Disposable at end of sensor life
- Warranty: 24 months

CE0123

Includes operator manual and the following standard accessories:

0120399 Pk of 5



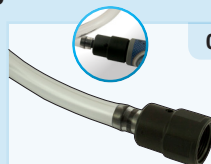
'T' Adapter 22mm I.D. - 22mm O.D., T = 15mm I.D.
Single Unit Supplied

0120095



Flow Diverter
15 mm O.D.

0120120



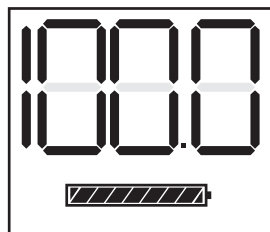
Oxygen Concentrator
Adapter Cap

MaxO₂+A

The MaxO₂+A analyser is ideal for checking oxygen percent accuracy in oxygen concentrators.

0111260

- Integral sensor
- Long battery life (approximately 5,000 hours on 2 x AA batteries)
- Ergonomic hand-held design
- Impact resistant and drip proof
- Large LCD with 3.5 digit display
- One-touch calibration
- Warranty: 24 months



CE 0123

Includes the following standard accessories:



0110427

MAX-250+ Oxygen Sensor



0120399 Pk of 5

'T' Adapter 22mm I.D. - 22mm O.D., T = 15mm I.D.
Single Unit Supplied



0120095

Flow Diverter
15 mm O.D.



0120120



Oxygen Concentrator Adapter Cap

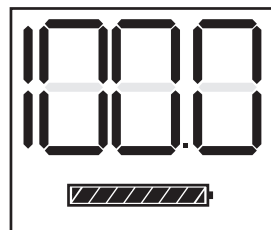
See page 33 for optional extra accessories...

MaxO₂+AE

The MaxO₂+AE is best used anywhere an inline analyser is needed, when alarms are not deemed important. It is especially useful in conjunction with older ventilators or oscillators.

Standard cable version - 0111261
Short cable version - 0111262

- External sensor
- Long battery life (approximately 5,000 hours on 2 x AA batteries)
- Ergonomical hand-held design
- Impact resistant and drip proof
- Large LCD with 3.5 digit display
- One-touch calibration
- Warranty: 24 months



CE0123

Includes the following standard accessories:



0110429

MAX-250E Oxygen Sensor



0120399 Pk of 5

'T' Adapter 22mm I.D. - 22mm O.D., T = 15mm I.D.
Single Unit Supplied



0120095

Flow Diverter
15 mm O.D.



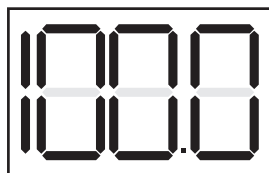
0121302

'V' Mount Assembly

MaxO₂ ME Oxygen Monitor

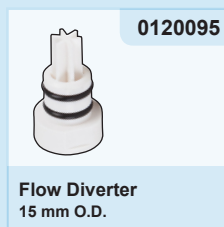
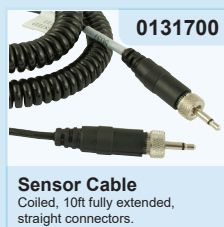
The MaxO₂ ME oxygen monitor with backlit LCD display, smart alarms, built-in kickstand and protective overmould

- Long battery life (approximately 5,000 hours on 4 x AA batteries)
- Adjustable alarms from 15 - 99%
- Smart alarms
- Sets alarms 3% \pm current reading
- Back lit LCD display
- DC power port
- (power supply sold separately)
- Protective overmould
- Built-in kickstand and dove tail mount
- Warranty: 24 months



CE 0123

Includes the following standard accessories:



See page 33 for optional extra accessories...

ENVITEC

by Honeywell

MySign® O

Oxygen Monitor



011276 Monitor only
011277 Kit including charger

- Fast and accurate measurement
- Lightweight, fast, simple and reliable
- For use in: general clinical applications, neonatal and intensive care units, emergency and rescue services, CPAP machine and oxygen concentrator applications...
- Wide range of functions
- Robust design IP54, IK05 ratings
- Extra large easy-to-read rotating TFT colour display
- Certified bio-compatibility
- Warranty: 24 months

PC Connection



Rotating Display



Backlit Keypad



Water/Dust-tight



CE0123

Includes the following standard accessories:



0121350

Sensor Cable
(Coiled 0.5m, extendable)
Right angled connector



0110560

OOM11
Oxygen Sensor



0120092

Sensor Flow Diverter
15mm O.D.



0120399 Pk of 5

'T' Adapter 22mm I.D. -
22mm O.D., T = 15mm I.D.
Single Unit Supplied



0121353

USB cable



0121352

MySign O Mains Power
Supply including UK / EU
/ USA / JPN adapters

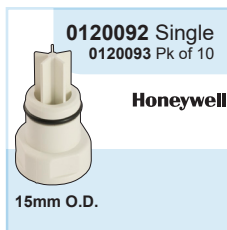
Supplied with kit

Oxygen Monitoring Accessories

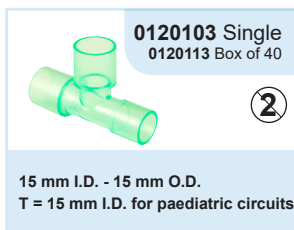
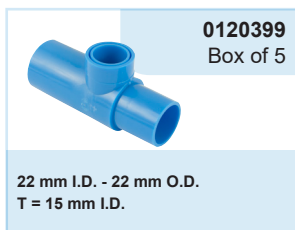
<div> <div></div> Supplied as Standard </div> <div> <div></div> Optional Accessories </div>								
Part No.	Description	OxiQuant S	Handl+	MaxO ₂ +A	MaxO ₂ +AE	MaxO ₂ ME	MySign O Monitor Only	MySign O Kit
0120099	Teledyne Flow Diverter 15 mm O.D.							
0120092	Viamed Flow Diverter 15 mm O.D.							
0120095	Maxtec Flow Diverter 15 mm O.D.							
0120097	Maxtec Flow Diverter 18 mm O.D.							
0120399	'T' Adapter 22 mm I.D. - 22 mm O.D.							
0120103	'T' Adapter 15 mm I.D. - 15 mm O.D., T = 15 mm I.D. for paediatric circuits							
0121205	Calibration Assembly							
0120101	Adapter Cap 22 mm I.D.							
0120102	Adapter Cap 22 mm O.D.							
0120120	Oxygen Concentrator Adapter Cap							
0120125	Oxygen Connector 22 mm I.D. - 22 mm I.D.							
0120126	Oxygen Connector 22 mm O.D. - 22 mm O.D.							
0120127	Oxygen Connector 15 mm I.D./22 mm O.D. - 6.5 mm (tapered)							
0131150	Sensor Cable - Straight 3 m, right angled connectors							
0131201	Sensor Cable - Coiled 1 m, extendable, straight connectors							
0131202	Sensor Cable - Coiled 0.9 m, extendable, right angled connectors							
0121350	Sensor Cable - Coiled 0.5 m, extendable, right angled connectors							
0131700	Sensor Cable - Coiled 10ft fully extended, straight connectors							
0121302	'V' Mount Assembly							
0121180	'V' Wall Mount							
0121181	'V' Mount Pole Clamp: Small							
0121182	'V' Mount Pole Clamp: Large							
0121184	'V' Mount Rail Clamp							
0121197	'V' Mount Pole Clamp: Horizontal							
0121200	Universal Mounting Clamp							

Part No.	Description	OxiQuant S	Handi+	MaxO ₂ +A	MaxO ₂ +AE	MAXO ₂ ME	MySign O Monitor Only	MySign O Kit
0121351	MySign O Universal Mounting Clamp						•	•
0121301	Belt Clip & Pin Assembly			•	•	•		
0121305	Rubber Overmould for Handi+, Blue		■					
0121300	Lanyard		■	■	■			
0110427	MAX-250+ Oxygen Sensor			■				
0110429	MAX-250E Oxygen Sensor				■			
0110430	MAX-250ESF Oxygen Sensor				•			
0110452	MAX-550E Oxygen Sensor					■		
0110560	OOM111 Oxygen Sensor						■	■
0110660	OOI103 Oxygen Sensor	■						
0120121	Flowcheck	•	•	•	•	•	•	•
0121318	Remote Power Supply including UK/USA/EU adapters					•		
0121352	Power Supply including UK/EU/USA/JPN adapters						•	■
0120124	Connector 22 mm oxygen stem	■	•	•	•	•	•	•

Flow Diverters for use with oxygen sensors with an M16 x 1 mm input thread



T Adapters for use with 15 mm O.D. flow diverters

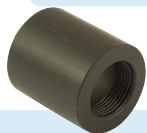


Adapter Caps

Connects to oxygen sensors/analysers/monitors that have M16 x 1 mm input thread

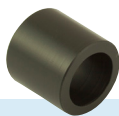
Connectors

0120101



22 mm I.D.

0120102



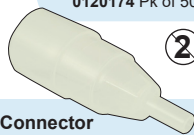
22 mm O.D.

0120120



Oxygen Concentrator Adapter Cap

0120124 Single
0120174 Pk of 50



Connector
22 mm O.D. - 6 mm oxygen stem

Connectors

0120125 Single
0120175 Box of 35



②

22 mm I.D. - 22 mm I.D.

0120126 Single
0120176 Box of 40



②

15 mm I.D./22 mm O.D. - 22 mm O.D.

0120127 Single
0120177 Box of 45



②

15 mm I.D. /22 mm O.D. - 6.5 mm (tapered)

0120178
Box of 50



②

15 mm I.D. - 22 mm I.D.

Flow Check Available Whilst Stock Lasts

0120129 Single
0120179 Pk of 35



②

22 mm O.D. - 30 mm O.D.



Maxtec FlowCheck

Working in conjunction with oxygen analysers, providing users with the ability to check oxygen concentration and flow all at once. This flowmeter will indicate the flow from 0 - 8 litres per minute and is useful in multiple applications.

- Simple to use and easy to read
- Convenient pocket-size
- For sensors/analysers with threaded input M16 x 1 mm
- Check flow and O₂% all-in-one
- Range 0 - 8 LPM
- Accuracy ± 0.4 LPM

Whilst stocks last

0120121

Cables with screw lock connectors

for use with oxygen sensors that have a 3.5 mm/0.141" jack output connector

0131150



(Straight 3m)
Right angled connectors

0131201



(Coiled 1m, extendable) Straight connectors

0131202



(Coiled 0.9m, extendable) Right angled connectors

Monitor Mounting Options

for use with Teledyne AX300/MX300 and Maxtec monitors

0121180



'V' Wall Mount

0121181



'V' Mount Pole Clamp
Small:
14 - 25 mm clamping width

0121182



'V' Mount Pole Clamp
Large:
16 - 40 mm clamping width

0121184



'V' Mount Rail Clamp
Attaches to most types of
medirail 30 mm (H) x 10 mm (D)

0121197



'V' Mount Pole Clamp
Horizontal
10 - 44 mm clamping width

0121200



Universal Mounting Clamp
Attaches to the threaded socket on the rear of the units



Maxtec Specific Accessories



0121302



'V' Mount Assembly
for use with Maxtec MaxO₂. To
attach to V mount clamps

0121301



**Belt Clip &
Pin Assembly**

0121305



**Rubber Overmould,
Blue** for use with Handi+

0121300
RP76P06


Lanyard

0110427



**MAX-250+
Oxygen Sensor**

0110429



**MAX-250E
Oxygen Sensor**

0110430



**MAX-250ESF
Oxygen Sensor**

0110452



**MAX-550E
Oxygen Sensor** for use
with MaxO₂ ME Oxygen Monitors

0131700



Sensor Cable
Coiled, 10ft fully extended,
straight connectors.
For use with MaxO₂ ME

0121318



Remote Power Supply
Supplied for use with MaxO₂ ME
includes UK, EU, USA/AUS adapters



0110560

OOM111
Oxygen Sensor



0110660

OOI103
Oxygen Sensor



0121353

USB Cable



0121352

MySign O Mains Power Supply including UK / EU / USA / JPN adapter



0121350

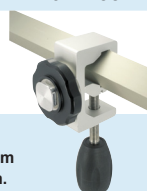
(Coiled 0.5m, extendable)
Right angled connector



0121351

MySign O Universal Mounting Clamp

The convenient robust aluminium one-piece universal mounting clamp from Envitec fits any shape of rail, can be adjusted and fastened in any position.

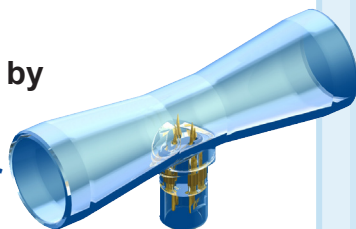


Flow Sensors

For flow measurement of gas delivered by anaesthesia systems and ventilators.

Flowsensor A - Single Use Flow Sensor

Hot-wire anemometric flow sensor



Compatible to the Dräger SpiroLife flow sensor: Part no. 8403735.

Viamed Part Number: 4310001

Flowsensor A(PC) - Autoclavable Flow Sensor

Compatible to the Dräger SpiroLife flow sensor: Part no. MK 01900.

Viamed Part Number: 4310002

Flowsensor H - Single Use Flow Sensor

Differential pressure flow sensor

for use with Hamilton ventilators



Compatible to Hamilton Medical H7400 Accu Tach flow sensor

Viamed Part Number: 4310003



ALSO AVAILABLE...

VersaStream[®] Gas Sampling Lines

The cost-effective alternative to Nafion and Water traps

VersaStream sampling lines for sidestream capnography offer innovative one-piece sampling solutions with increased performance.

Why VersaStream CO₂ sampling lines?

- **One-piece sampling line solution**
- **Cost-effective** alternative to Nafion[®] tubes - **from £6.80 per patient***
- The gas-selective non-porous material facilitates fast and complete removal of condensation from the sampling line
- The integrated bacterial filter **prevents contamination**
- **Reliable measured gas values**, due to negligible dead space volume of the filter - even in cases of high respiration rates
- **Integrated bacteria filter and water removal** reduces the number of patient circuit parts and speeds up patient monitoring preparation time

Available in a number of variants including:



Nasal
Sampling
Line



Nasal
Cannula



Nasal/Oral
Cannula



Airway Adapter
Sampling Line



Luer Lock
Male

* Type and size dependant

Compatible with Masimo, Phase-In, Spacelabs & Viamed

For use with VM-2500 Sidestream
Capnographs and Masimo/Phase-In
technology enabled capnographs



Luer Lock Male

For use with Capnographs and Multigas
Monitors that incorporate a Luer Lock
sampling port



Oridion Compatible Nellcor, Covidien, Medtronics

For use with Oridion (Medtronics/
Covidien/Nellcor) capnographs, as well as
capnographs and patient monitors from
other manufacturers that incorporate
Microstream® technology, such as Philips,
Dräger, Physio Control, Zoll...



**For cross reference
information please go to
www.viamed.co.uk/linesxref**



Viamed Limited · 15 Station Road · Cross Hills
Keighley · West Yorkshire · BD20 7DT · United Kingdom
Tel: +44 (0)1535 634 542 Fax: +44 (0)1535 635 582
Email: info@viamed.co.uk Website: www.viamed.co.uk

All trademarks and trade names referenced in this material are the property of their respective owners.

OEM application details are provided in good faith without responsibility.

Images are for illustrative purposes only. Cover image supplied by Vecteezy.com

Specification subject to change



Part Number: 9990100

UK

Date: 11/22